



## LLOYD'S REGISTER OF SHIPPING

MEIKAI BUILDING

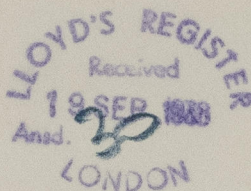
No. 32, AKASHI MACHI,

KOBE, August 31st 1938.-

TELEGRAMS: "REGISTER" KOBE

TELEPHONE: 2530 SANNOMIYA

The Secretary,  
LONDON

s/s "RYUAN MARU"

Dear Sir,

With reference to your enquiry letter of the 23rd June regarding the chain cable for the above vessel, I have to inform you that she was in dry dock at Osaka from the end of July until the 14th August, and, at that time, she underwent a Government Survey by the Teikoku Kaiji Kyokai, and extensive repairs were carried out, including damage repairs. Although repeated enquiries were made of the Owners in regard to their intentions during, and after, this docking, we have received no reply.

In the circumstances, therefore, it is submitted that the vessel's Class be expunged with a red line.

I am, Dear Sir,

Yours faithfully,



© 2021  
Lloyd's Register  
Foundation

W1327-0233

*Spad for 1/10*



191251-0533

Referred to Mr. Hill  
Referred to the Office  
(Freeboard)

19 SEP 1938

19 SEP 1938

19 SEP 1938

the vessel is cleared for service.

in the circumstances, therefore, it is recommended that

the vessel be cleared for service.

and the vessel is cleared for service.

and the vessel is cleared for service.

and the vessel is cleared for service.

and the vessel is cleared for service.

and the vessel is cleared for service.

and the vessel is cleared for service.

and the vessel is cleared for service.

and the vessel is cleared for service.

and the vessel is cleared for service.

and the vessel is cleared for service.

and the vessel is cleared for service.

and the vessel is cleared for service.

and the vessel is cleared for service.

and the vessel is cleared for service.

and the vessel is cleared for service.

and the vessel is cleared for service.

and the vessel is cleared for service.

and the vessel is cleared for service.

and the vessel is cleared for service.

and the vessel is cleared for service.

and the vessel is cleared for service.

LOYD'S REGISTER OF SHIPPING

MEIKI BUILDING

10, 25, AKASHI MACHI

COBE, August 1938

RECEIVED  
19 SEP 1938  
LONDON

RECEIVED  
19 SEP 1938  
LONDON



© 2021 Lloyd's Register Foundation