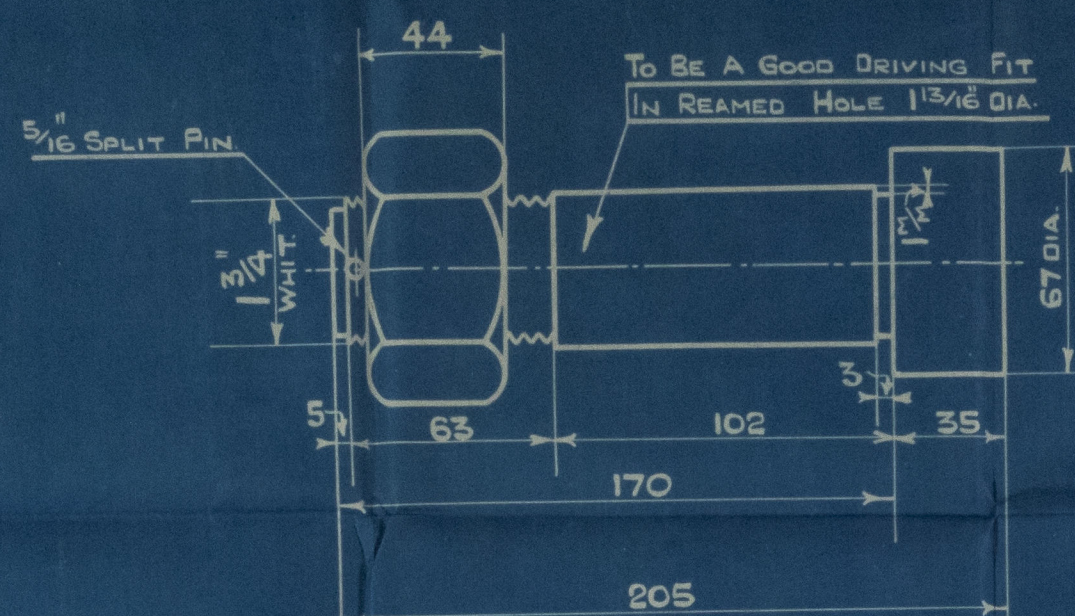
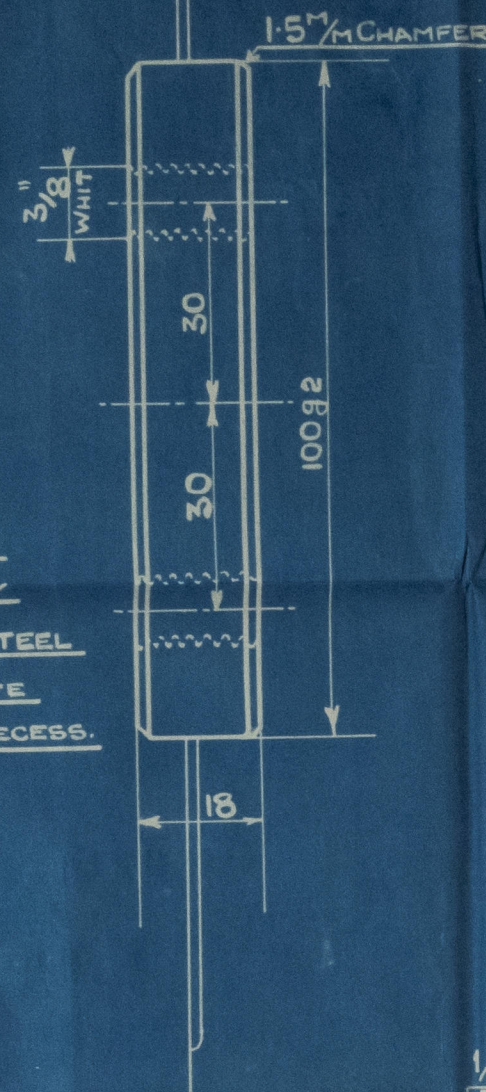
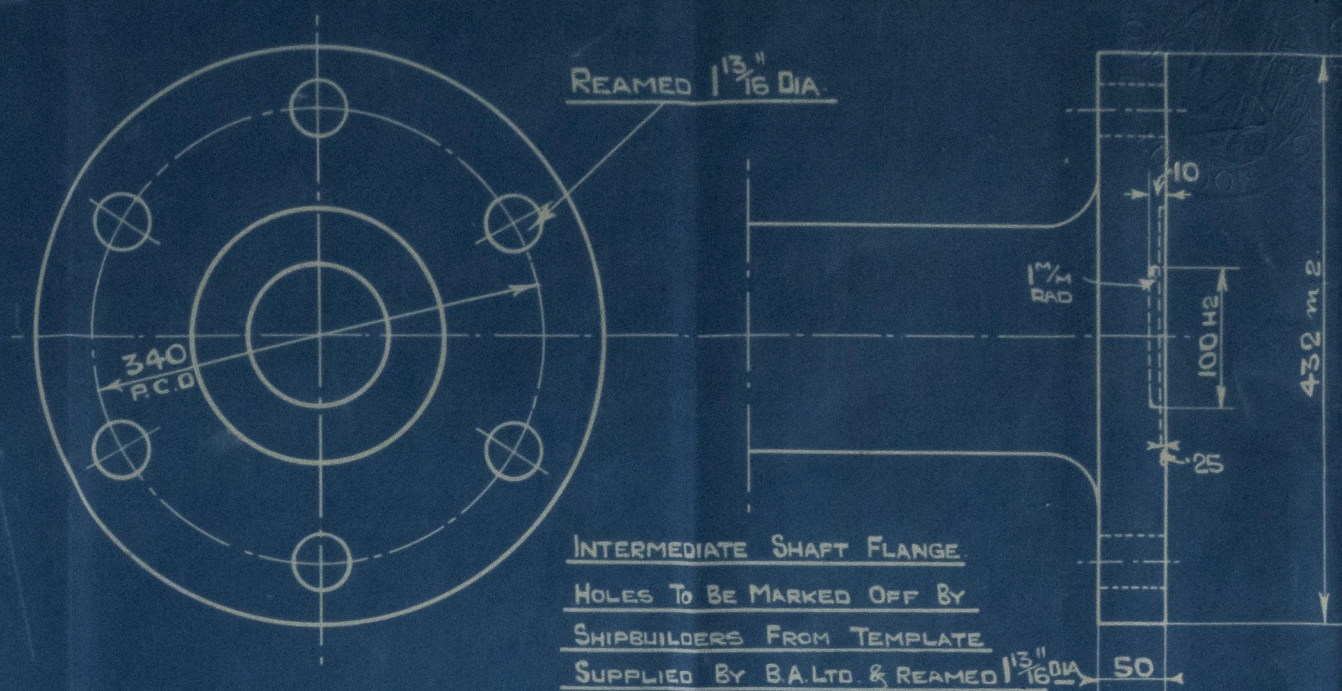


APPROVED	GODKÄND	DATO	MOTORTYP

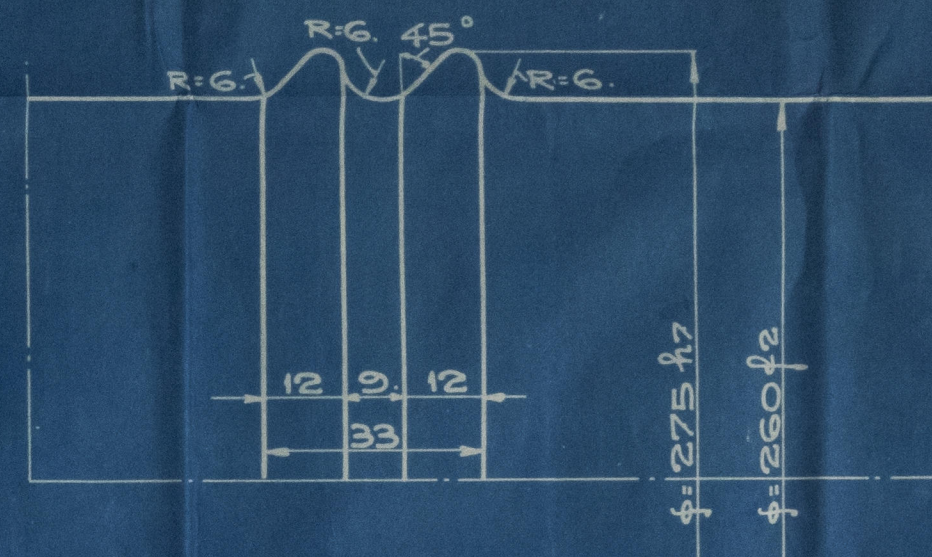
REMOVABLE SPIGOT BETWEEN THRUST & INTERMEDIATE SHAFTS SUPPLIED BY ENGINE BUILDERS. MAT. MILD STEEL
TO BE USED BY MAKERS OF INTERMEDIATE SHAFT AS GAUGE WHEN BORING SPIGOT RECESS.



COUPLING BOLT. MAT. MILD STEEL
NOT SUPPLIED BY ENGINE BUILDERS.



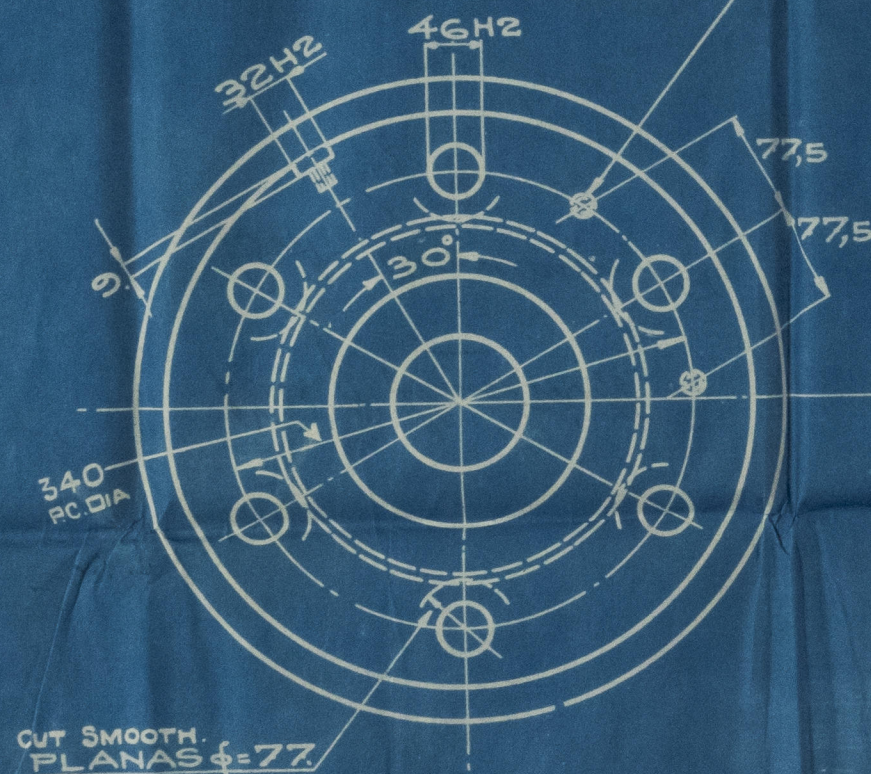
DETAIL AT
DETALJ VID "A".



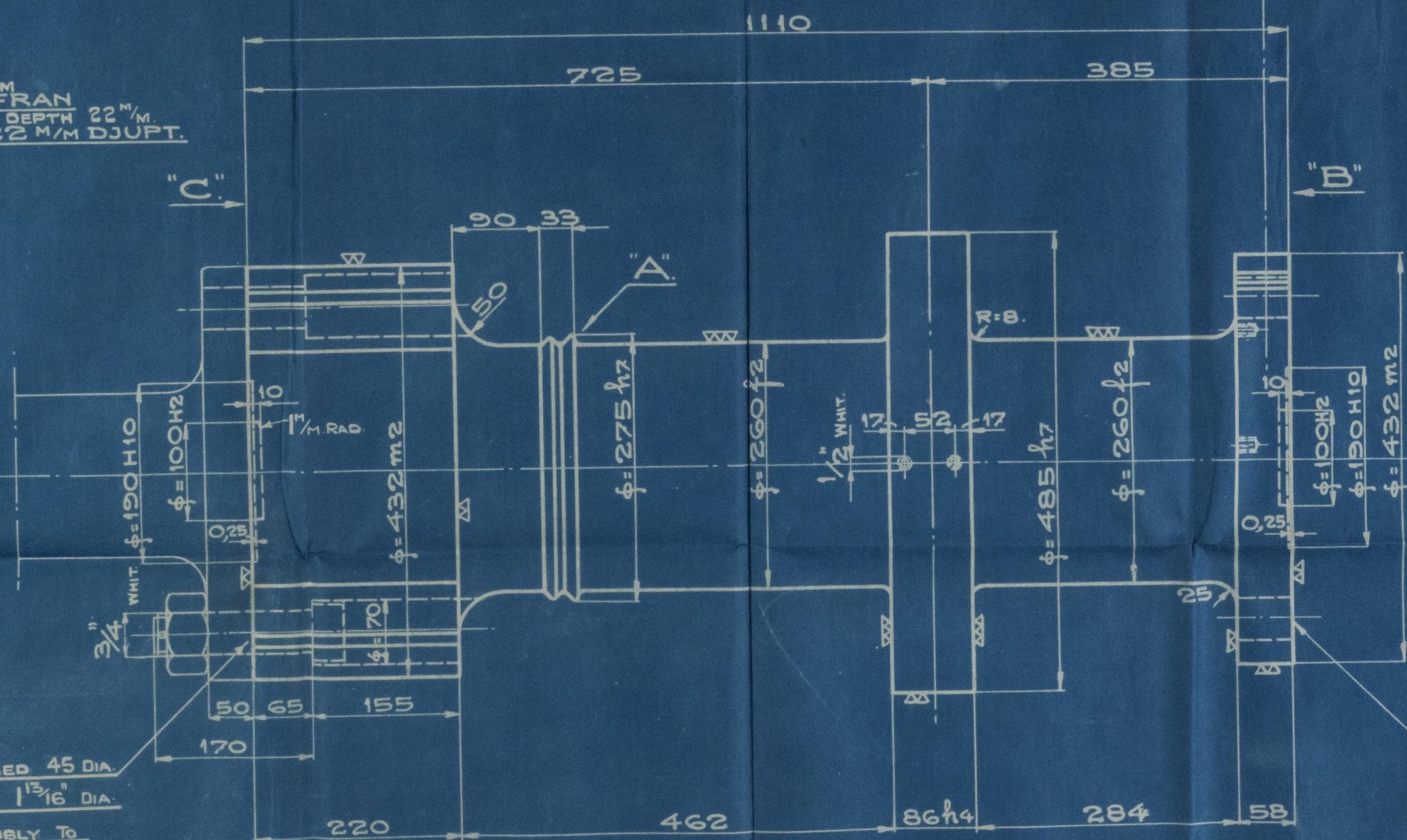
LOOKING FROM
SEDD FRAN "C".



LOOKING FROM
SEDD FRAN "B".



1/2"
DRILLED FROM
BORRAS FRAN
INSIDE THREAD DEPTH 22"/M.
INSIDAN, 22 M/M DJUPT.



EX. RU. 1 3/4-170
BGLM. 1 3/4"
SP. 6 x 70.
HOLES DRILLED
HAL BORRAS φ=45.
REAMED
BROTTAS φ=46 H2
TOGETHER WITH
TILLSAMMANS MED
CRANKSHAFT.
VEVAXELN.

HOLES DRILLED 45 DIA.
IN THRUST SHAFT AND REAMED 1 3/16 DIA.
AFTER ASSEMBLY TO
INTERMEDIATE SHAFT.

100 g2	99.986
	99.960
32 H2	32.0
	32.025
46 H2	46.0
	46.025
86 h4	86.0
	85.945
100 H2	100.0
	100.035
190 H10	190.0
	190.9
260 f2	259.94
	259.89
275 h7	275.0
	274.75
432 m2	432.08
	432.04
485 h7	485.0
	484.7

CLASSIFICATION SEE D865
FOR KLASSNING SE RITN. MA710 OCH MA717.

ÄNDRINGAR OCH TILLÄGG

⑤	④	③
---	---	---

EX. PARTIULARS OF BOLT & INTERMEDIATE SHAFT ENDS ADDED TO DRAWING. L.B.S.

M34M-A750	MAT. KLASSEN.
THRUST SHAFT	
N ^o MA745	Sc 1:5, 1:1
A-3 ATLAS DIESEL	DATO.
STOCKHOLM	8.2.34 TE

BRITISH AUXILIARIES LTD.
15 JUN 1934

Plan of Thinsthaff

Dist. Australian 4/17

Eng No. 189

GLASGOW REPORT No. 55388

Sir John

© 2021

Lloyd's Register
Foundation

W1327-0113

BRITISH AUXS.
ENG No 189.

Thamthapt

0113



© 2021

Lloyd's Register
Foundation