

No 415 MIDSHIP SECTION.



SCALE 1/2" TO ONE FOOT.

PRINCIPAL DIMENSIONS.	
LENGTH BETWEEN F.P.	345'-0"
BREADTH MOULDED	48'-0"
DEPTH TO A.W.N. DK.	30'-0"
TWEEN DK. HEIGHT	8'-0"
POOP BRIDGE & CASTLE DK. HEIGHT	7'-0"
LENGTH OF BRIDGE	73'-0"

SCANTLING NUMBERS.	
B.	48
D.	22
TRANSVERSE NO.	70
LONGITUDINAL NO.	24150
LD TO A.W.N. DK.	11.5
Q.	18'-2"

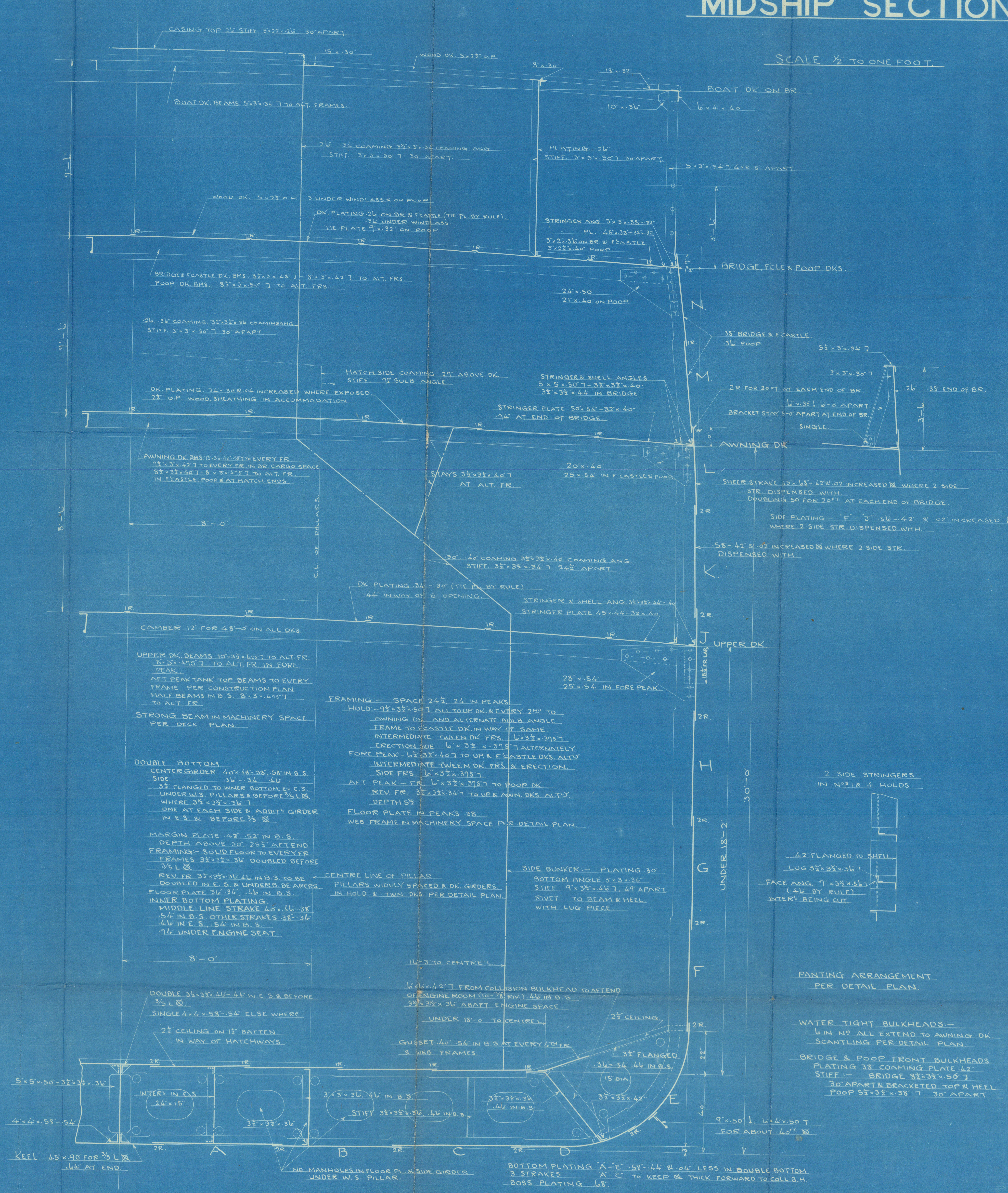
EQUIPMENT NUMBER	
L x (B+D)	24150
A.W.N. DK. (345x8x75)	2010
ERECTOR (130.62x7.5x75)	210.74
DECK HOUSES (69.42x7.5x5)	210.32
NUMERAL	27, 215, 06

EQUIPMENTS	
2-BOWER ANCHORS (STOCKLESS) 52 1/2 CWT (48 3/4 CWT BY RULE)	
ANCHOR (COMMON) 14 (13)	
1-STREAM (COMMON) 14 (13)	
1-KEDGE (COMMON) 3 (5)	
270 FATHOMS 2 1/2" STUD CHAIN CABLE (2 BY RULE)	
90 4 1/2" STEEL WIRE FOR STREAM ANCHOR	
120 4" TOWLINE	
4 COILS OF 90 FATHOMS OF 7 MANILA WARPS.	

ROWS OF RIVETS IN BUTTS	
ITEMS	ENDS.
BR. CASTLE POOP DKS. STRINGER PL.	2
PLATES	1
POOP DECK TIE PLATE	1
AWNING DECK STRINGER PLATE	3
PLATING	2
UPPER DECK STRINGER PLATE	3
PLATING	1
BR. CASTLE & POOP SIDE PLATING	2
AWNING DK. SHIP STRAKES	2
STRAKE BELOW	3-2
SIDE PLATING OF SHELL	3-2
BOTTOM PLATING OF SHELL	3
BOSS PLATING	6
MIDDLE STRAKE OF INNER BOTTOM	3
INNER BOTTOM PLATING	2
MARGIN PLATE	2
CENTRE GIRDER	3-2
KEEL PLATE	4-3

RIVETING	
ITEM	PITCH & CIRC. IN DIA. OF RIV.
FRAME TO SHELL	1 1/2" IN PEAK TANK & AT BOTTOM BEFORE 3 1/2" L
FLOORS IN AFT PEAK	5
REV. FR.	5 1/2
SHELL PLATE BUTTS	3 1/2" ON 1 1/2" BUTTLAP
SEAMS	4
DECK PLATE TO BEAMS	7 1/2" ON BEAMS TO ALT. FR.
BUTTS OF STRINGER PLATE	3 1/2
TIE	6
DECK	4
EDGES	4 1/2
GUNWALE ANGLE	4 1/2
DK. STRINGER ANGLE	4 1/2
DOUBLE BOTTOM	1
BUTTS OF MARGIN PLATE & GIBBER	4
& EDGES OF INNER BOTTOM PL.	4 1/2
MARGIN ANGLE	4 1/2
KEEL	5
FR. TO FLOOR PL. & REV. FR.	5
VERTICAL ANGLE ON CENTRE GIRDER	5
SIDE	7
ANGLE AT TOP OF CENTRE GIRDER	7 1/2 WHERE IN T
SIDE GIBBER ANGLE	4 RIVETS 2 1/2" FR.
BULKHEAD PLATING	4 1/2
BOUNDARY ANGLE	7
STIFFENERS	5
SIDE STRINGER FACE ANGLE	7
SHELL PLATE OF INTERCOSTAL	4 RIVETS 2 1/2" FR.
W.S. PILLARS & GIRDERS	7
GIRDER TO DECK	5
STEM STERN FRAME	5

FORGING & CASTING	
STEM	10" x 7 1/2" ROLLED OR FORGED STEEL (47.25 BY RULE)
STERN FR. (PROPELLER POST 9 1/2" x 1 1/2")	CAST STEEL
BULKHEAD	3 1/2" x 1 1/2"
RUDDER FRAME PER DETAIL PLAN	



PANTING ARRANGEMENT PER DETAIL PLAN.

WATER TIGHT BULKHEADS:-
1/2" IN NO. 1 & 2 EXTEND TO AWNING DK.
SCANTLING PER DETAIL PLAN.

BRIDGE & POOP FRONT BULKHEADS.
PLATING 3/8" COAMING PLATE 4 1/2"
STIFF. BRIDGE 3/8 x 3/8 x 56 1/2"
30" APART & BRACKETED TOP & HEEL
POOP 5 1/2 x 3 1/2 x 38 1/2" 30" APART.

9' x 50' 1/2" 1/4" x 50' 1/2" T
FOR ABOUT 40" 1/2"

BOTTOM PLATING "A-E" 5/8" x 1/4" 2" 0/4" LESS IN DOUBLE BOTTOM
3 STRAKES
"A-C" IS KEPT THICK FORWARD TO COLL. B.H.
BOSS PLATING 1/8"

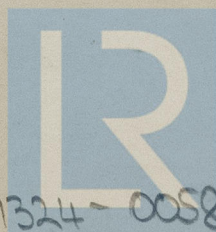
415
SHANGHAI HC
Midship Section

2417.

Kobe.

RETAIN

RETAIN



W1324-0058

© 2021

Lloyd's Register
Foundation