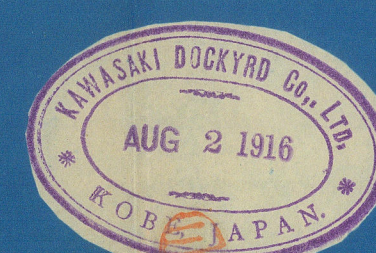


S.S. CARCO STEAMER GENERAL ARRANGEMENT.

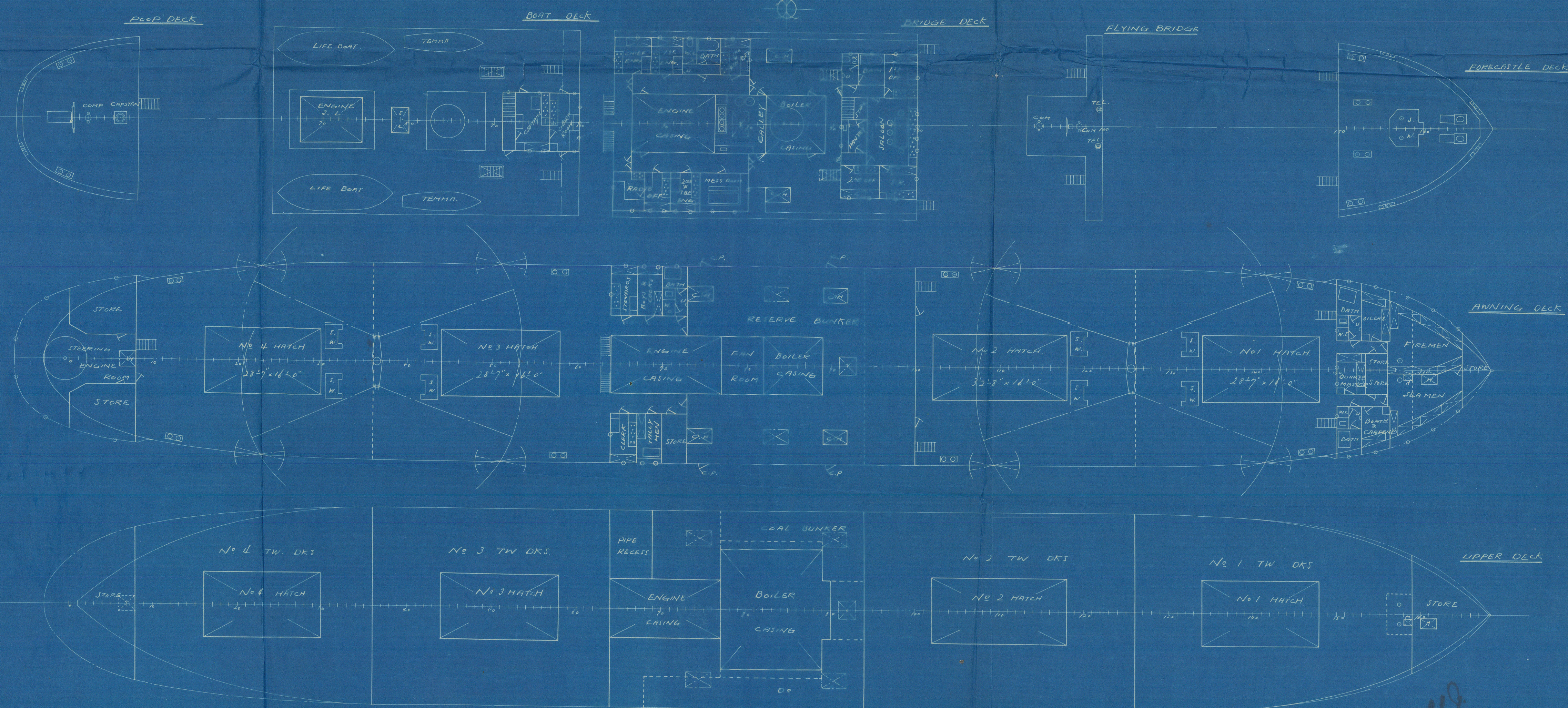
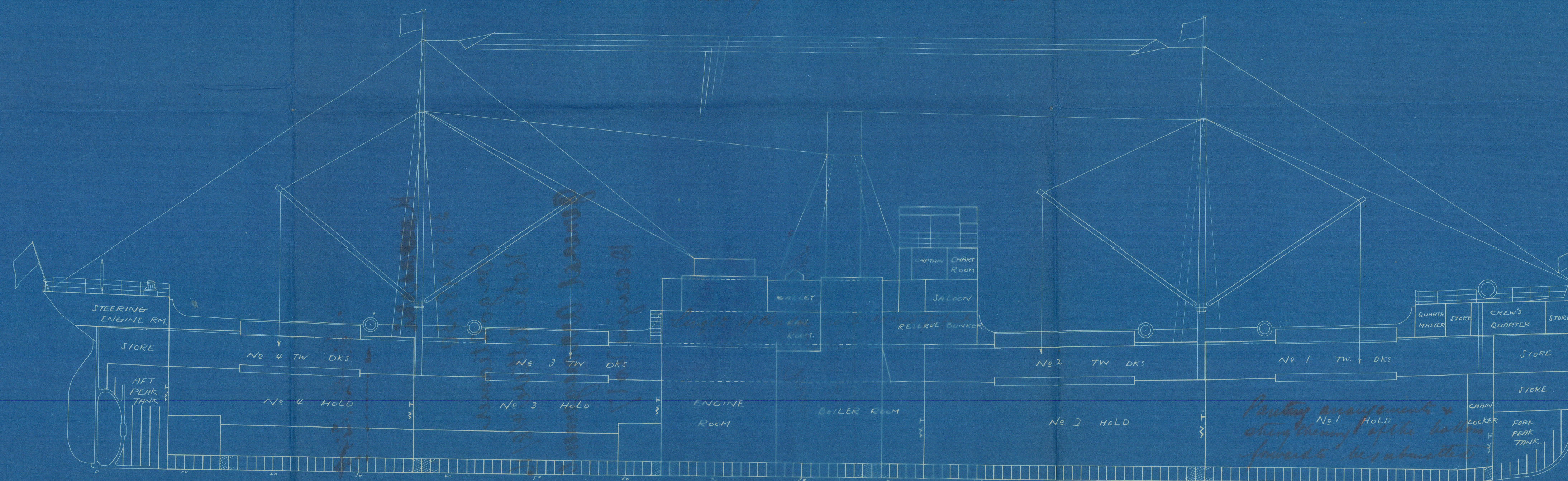


PRINCIPAL PARTICULARS

LENGTH P.P.	345'-0"
BREADTH M.L.	48'-0"
DEPTH M.L. TO AWH DE	30'-0"
TWEEN DE HEIGHT	8'-2"
GROSS TONNAGE ABOUT	4,100 TONS

SCALE 1/16" = 1'-0"

Sketches of Profile views showing structural arrangements to be submitted



14.9.16.



~~Gen. Rec 249~~

Kawasaki

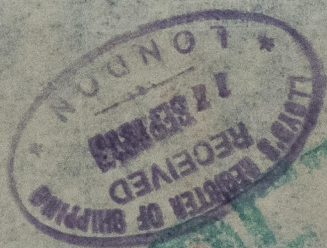
345 x 48 x 30

Cargo Steamer

Kobe letter 4/8/16

General Arrangement

Design no 17



"Shanghai Maru"

Kbe 2417



© 2021

Lloyd's Register
Foundation

W1324 - 0057