

No 2.

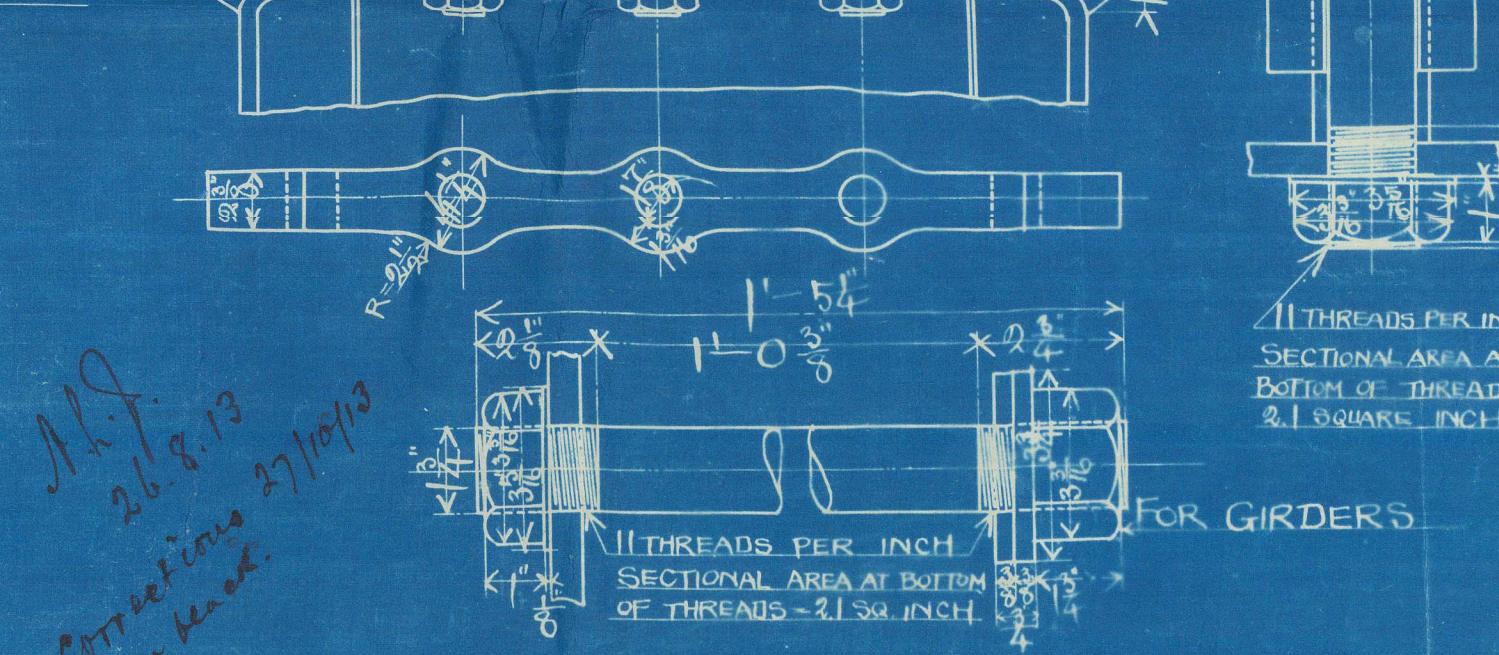
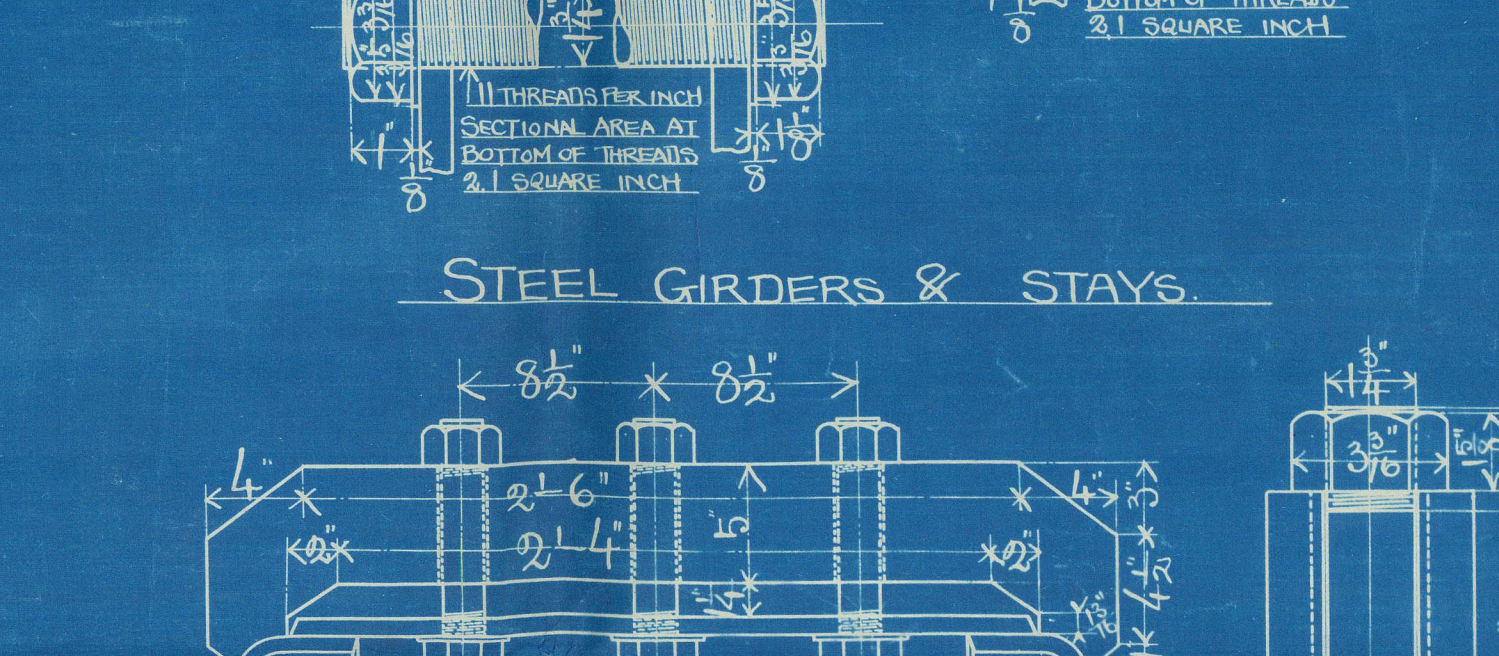
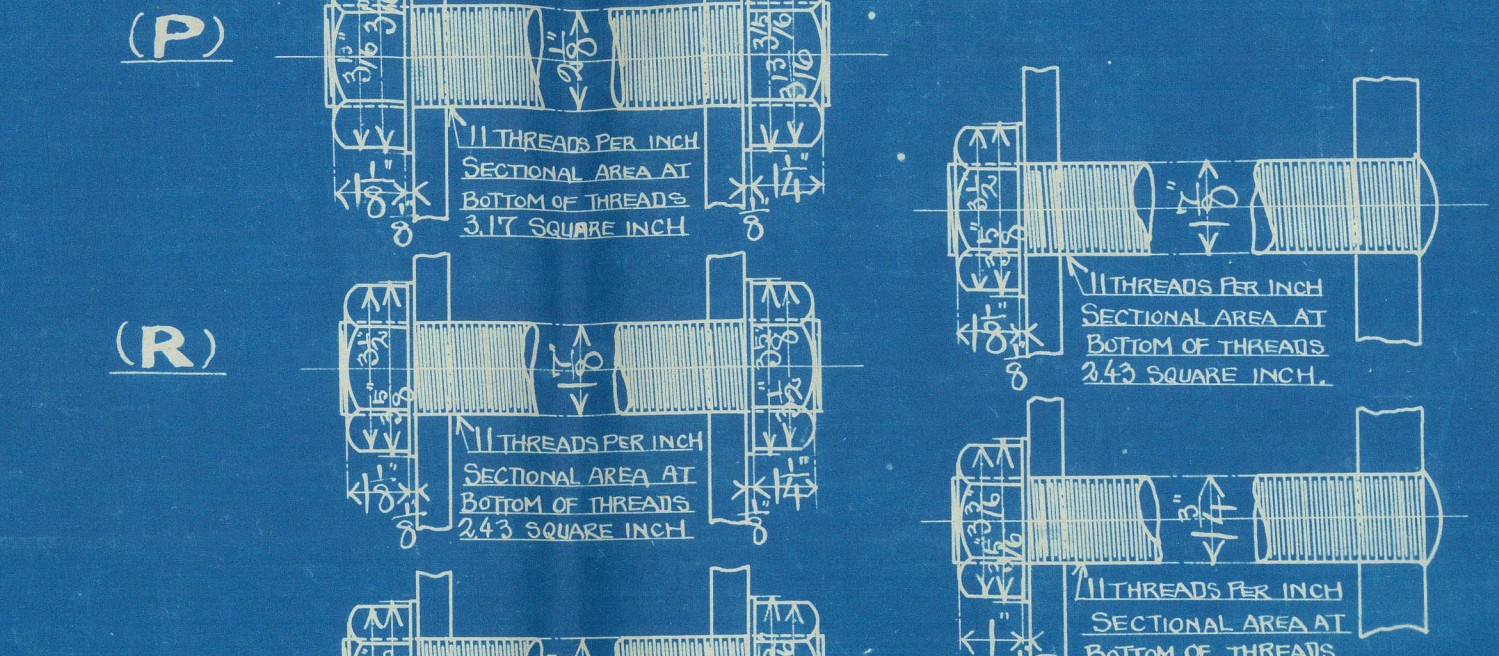
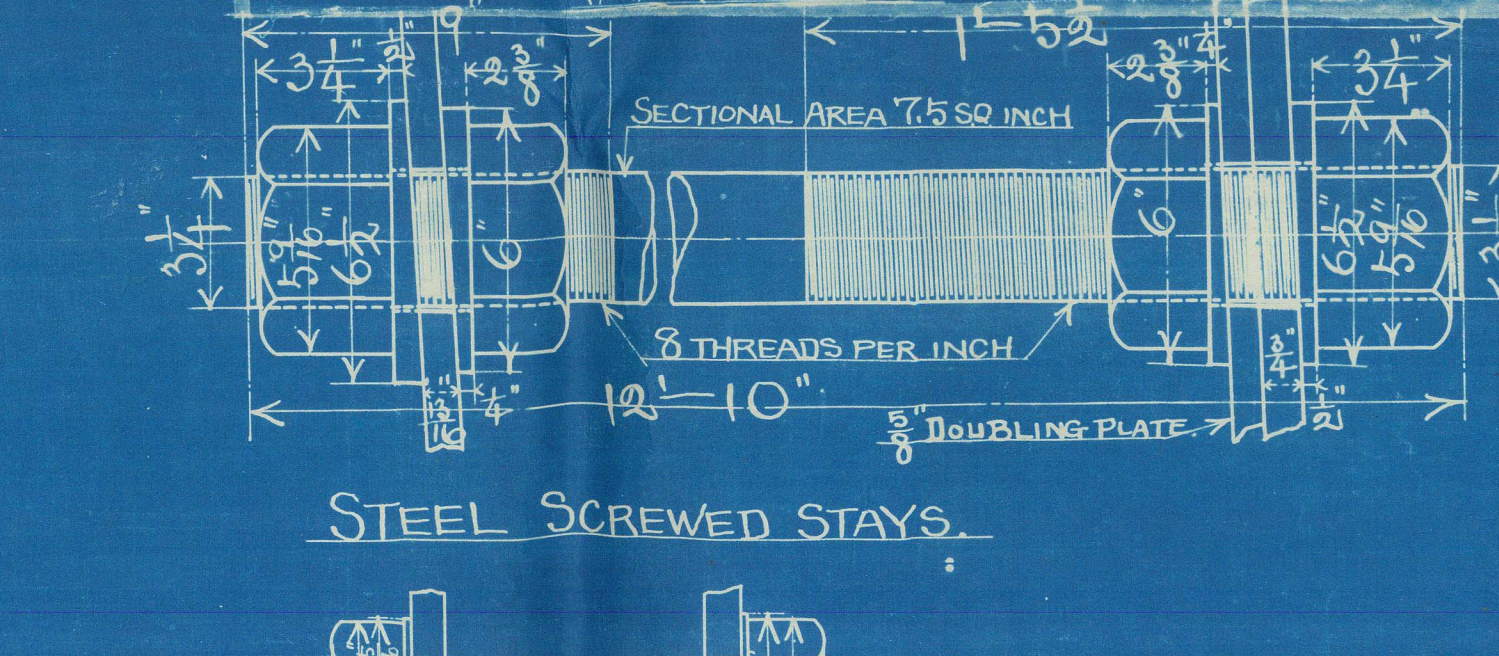
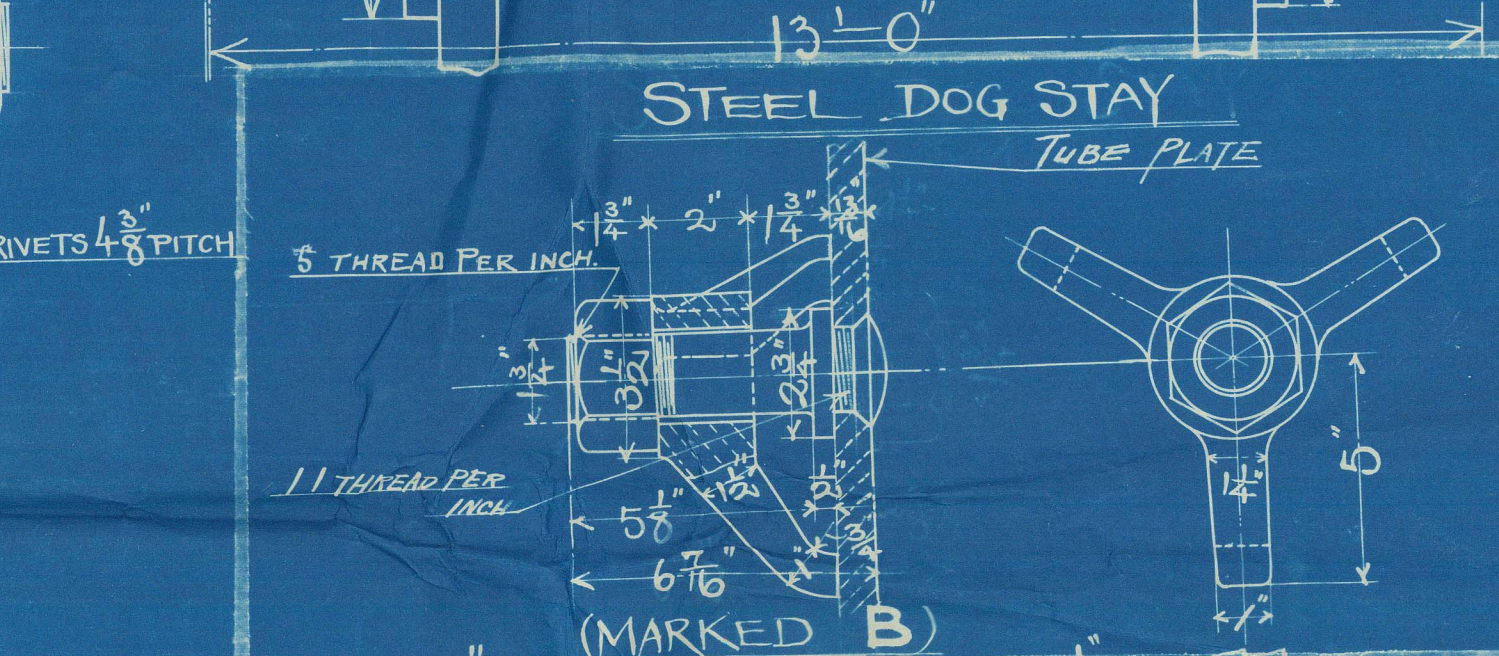
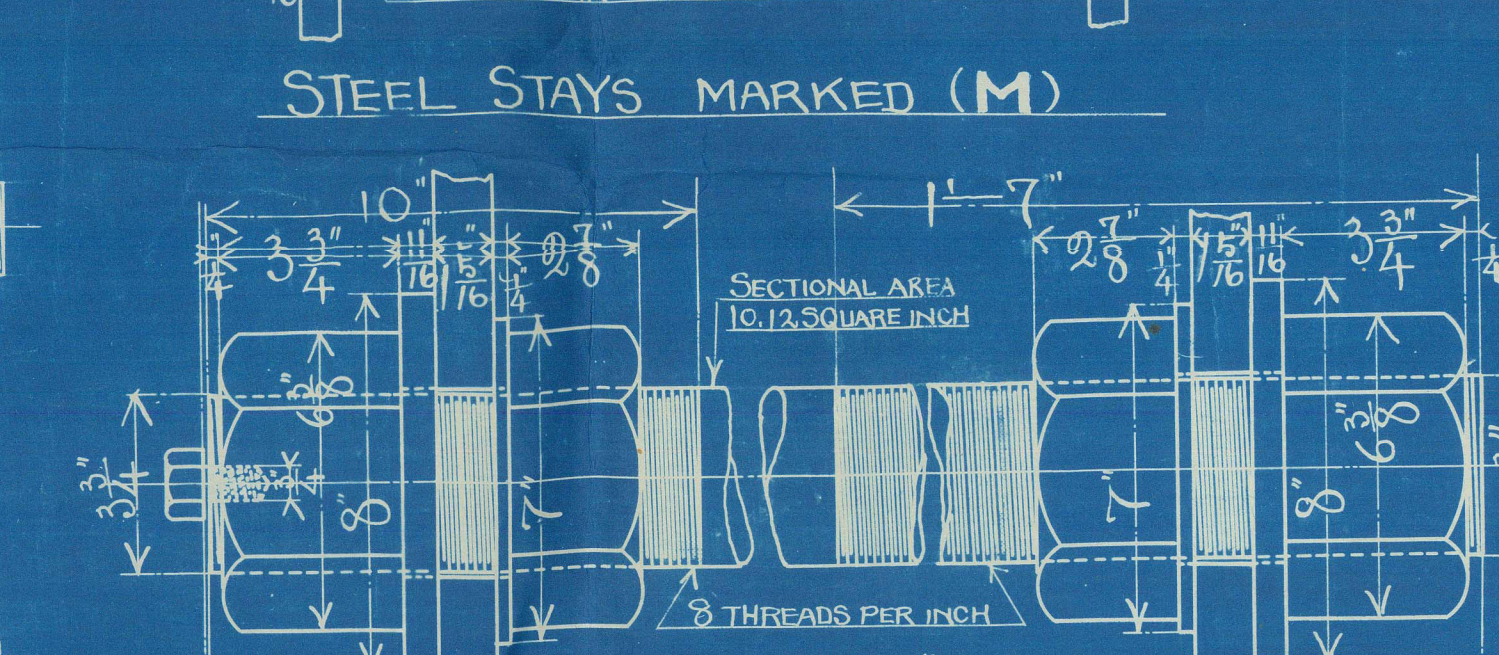
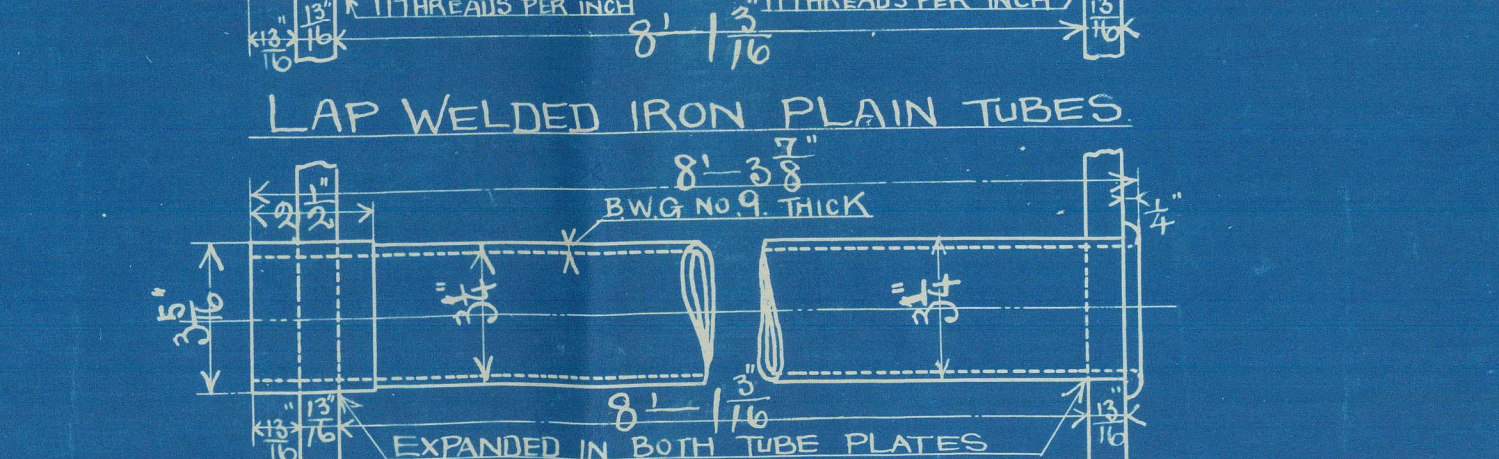
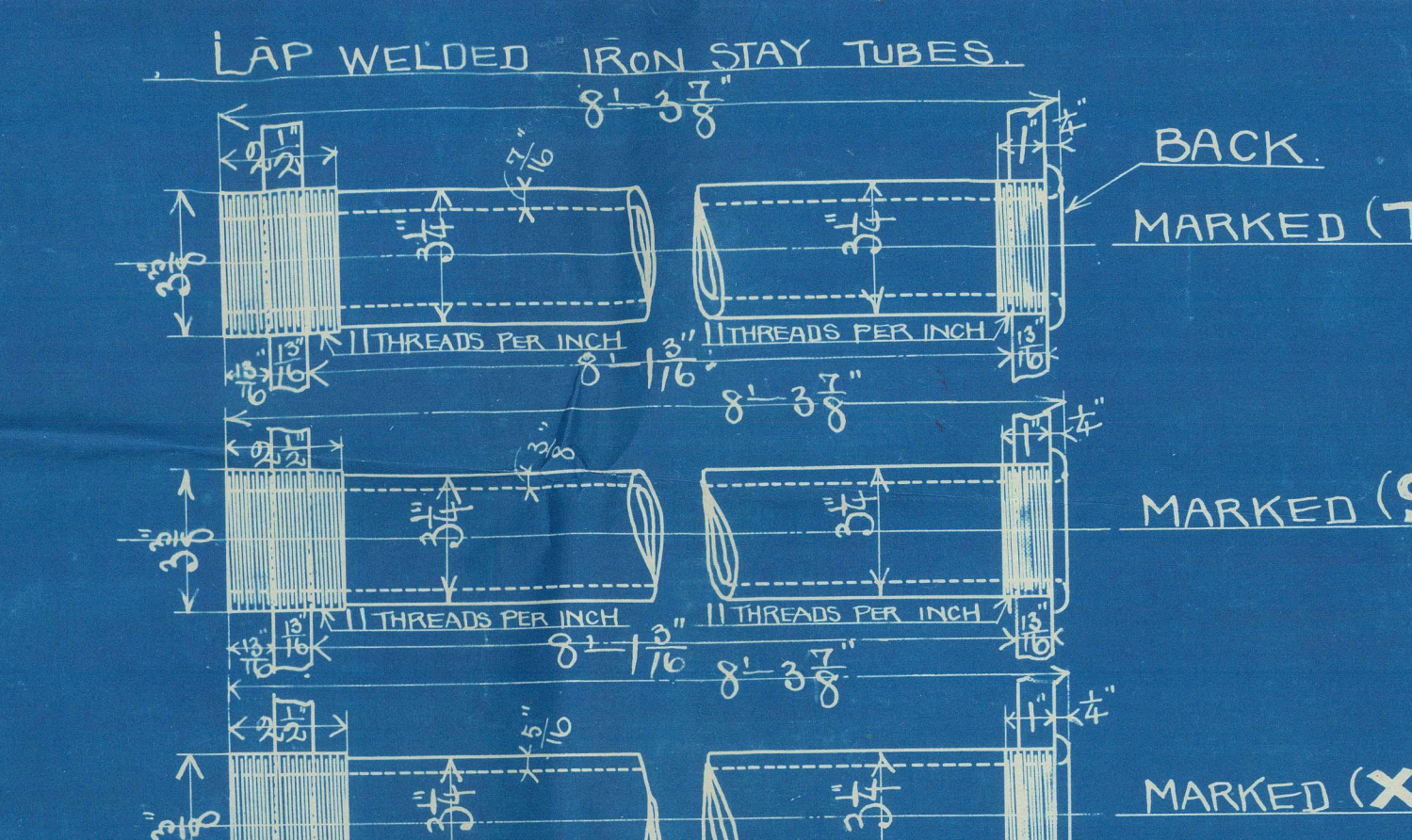
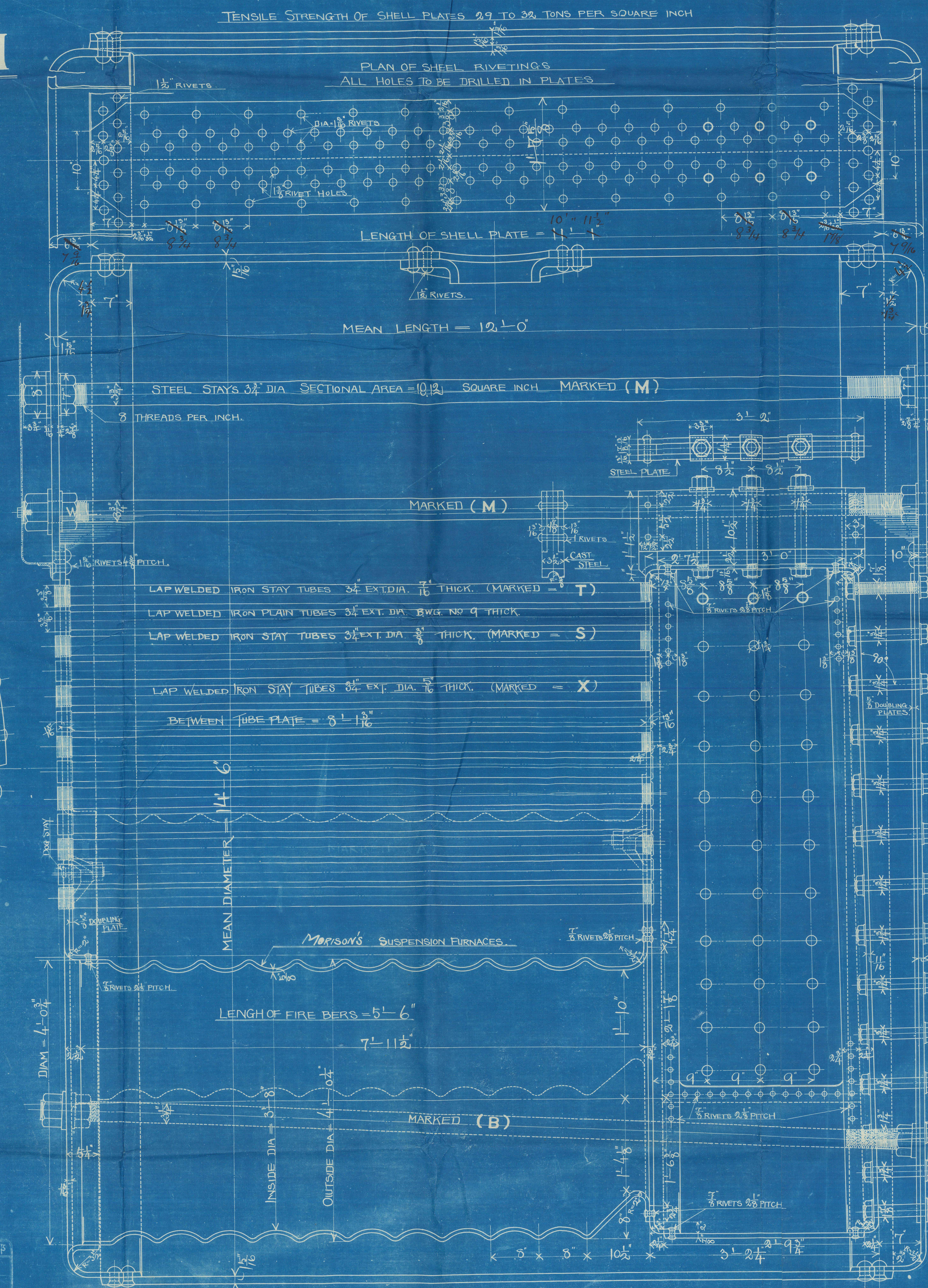
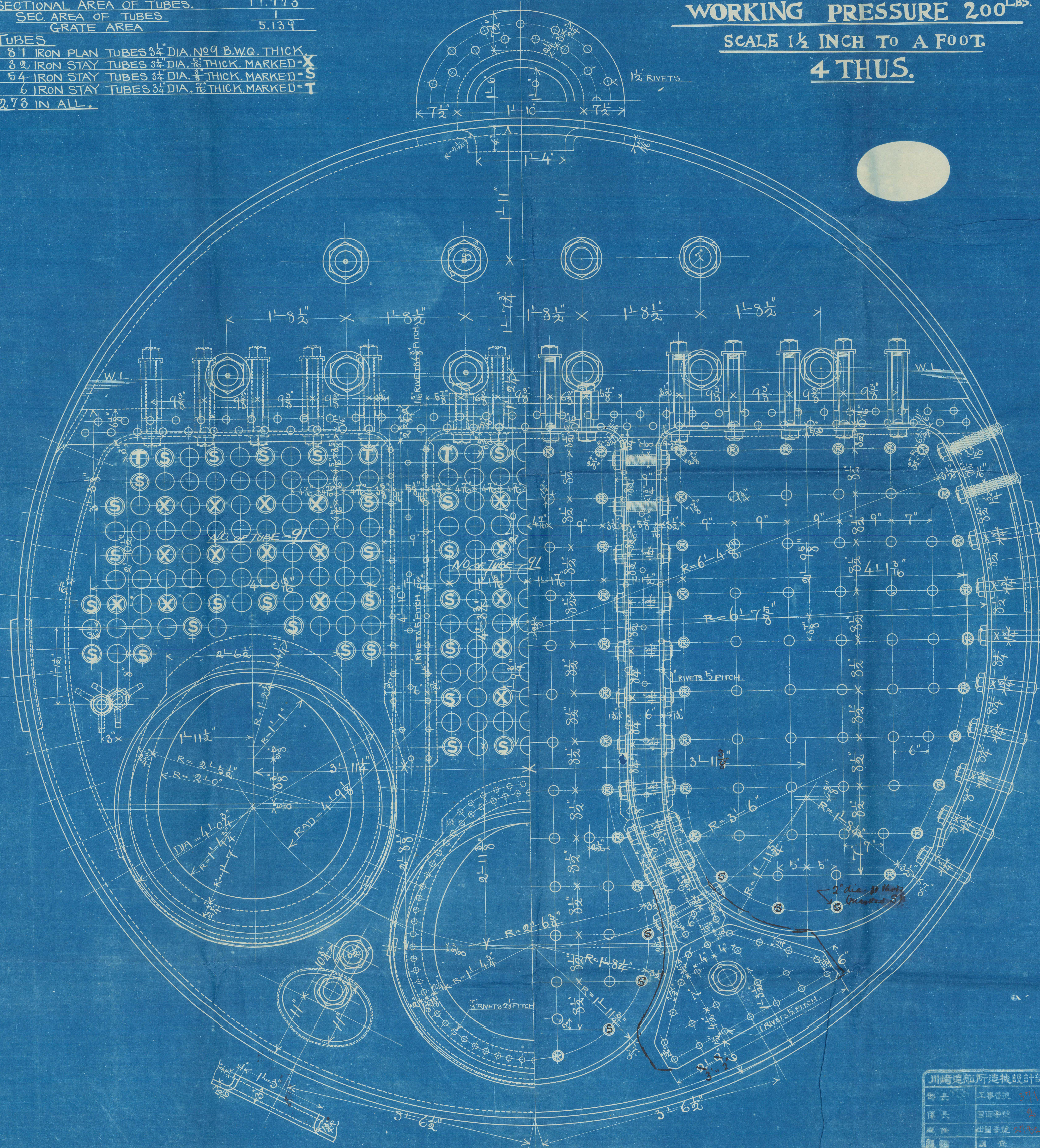
STEEL BOILERS

BUILDERS No. 371

DIA. 14'-6" x 12'-0" LONG
WORKING PRESSURE 200 LBS.
SCALE 1 1/2 INCH TO A FOOT
4 THUS.

HEATING SURFACES.	1881.221 ^{sq. ft.}
TUBES.	161.053
FLUES.	216.345
FIRE BOXES.	46.205
BACK TUBE PLATES.	2304.824
TOTAL.	60.50
GRATE AREA.	38.096
RATIO OF $\frac{H}{G}$.	11.773
SECTIONAL AREA OF TUBES.	1
SEC. AREA OF TUBES.	5.139

TUBES
 181 IRON PLAN TUBES 3/4" DIA. NO. 9 B.W.G. THICK
 32 IRON STAY TUBES 3/4" DIA. 1/2" THICK MARKED = **X**
 64 IRON STAY TUBES 3/4" DIA. 3/8" THICK MARKED = **S**
 6 IRON STAY TUBES 3/4" DIA. 1/2" THICK MARKED = **T**
 273 IN ALL.

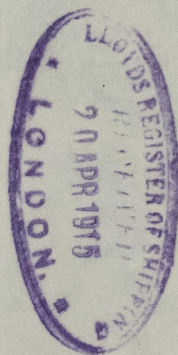


川崎造船所設計部
 設計 工務部
 監製 船務部
 監製 船務部

Kawasaki 341

Boilers.

(See also prints showing
alterations)



T. S. S. "Harbin Maru"

Kobe Rep. No 1601



© 2021

Lloyd's Register
Foundation

W1322-0084