

Nº159-162

直立汽罐

PERCENTAGE OF LONGITUDINAL SEAMS  
 PLATE 67.3%  
 RIVET 70.0%

PERCENTAGE OF CIRCUMFERENTIAL SEAMS  
 SHEEL END PLATE  
 PLATE 55.7% 55.7%  
 RIVET 47.4% 47.4%

PARTICULARS	
DIA. OF BOILER (MEAN)	4'-6"
HIGH (OVER END PLATES)	10'-6"
NO. OF CROSS TUBES (9 IN. DIA.)	2
HEATING SURFACE	63.0 <sup>sq</sup>
WORKING PRESSURE	100 <sup>PSI</sup>
WATER TEST PRESSURE	200 <sup>PSI</sup>
OIL BURNING SYSTEM	

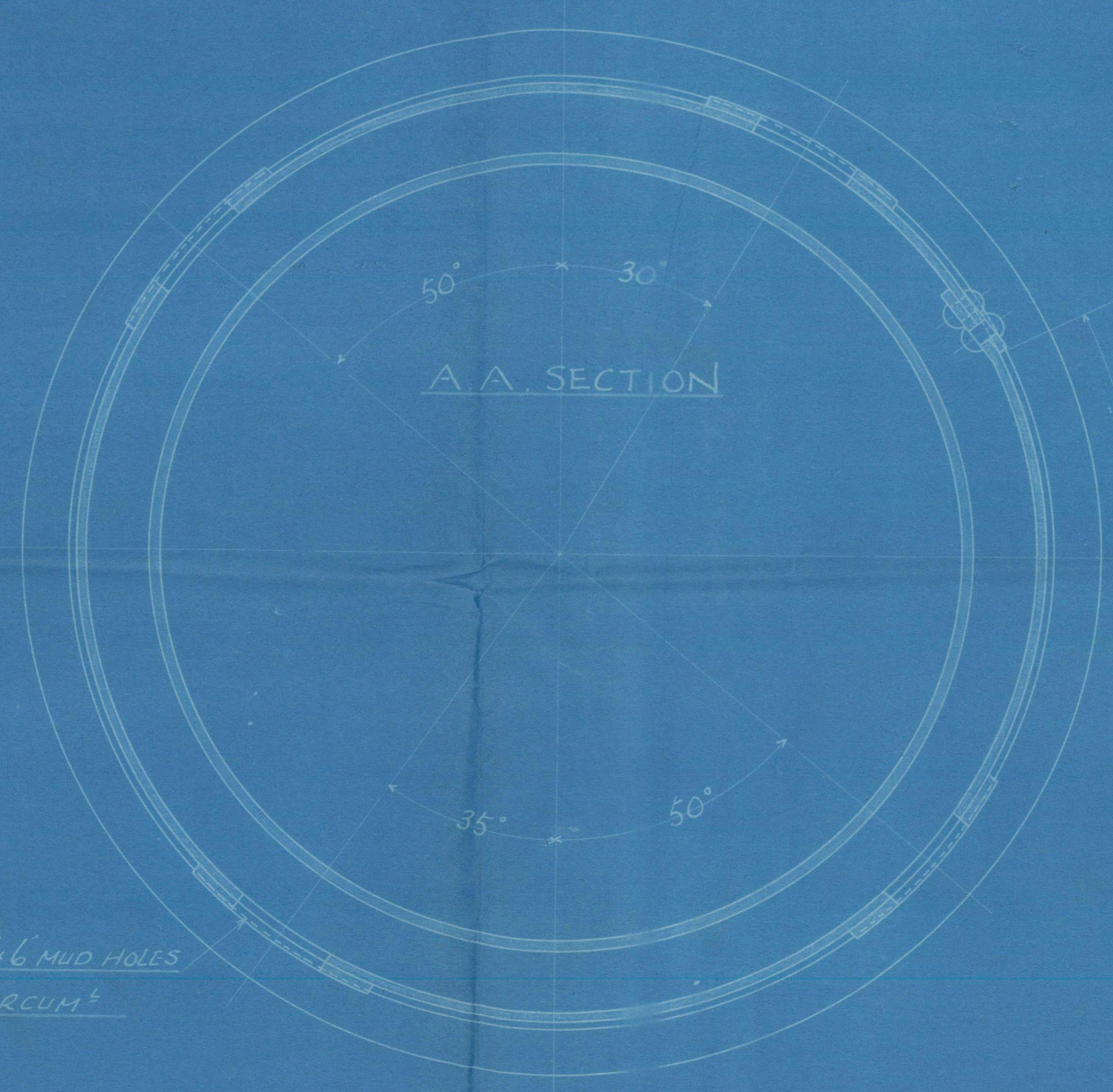
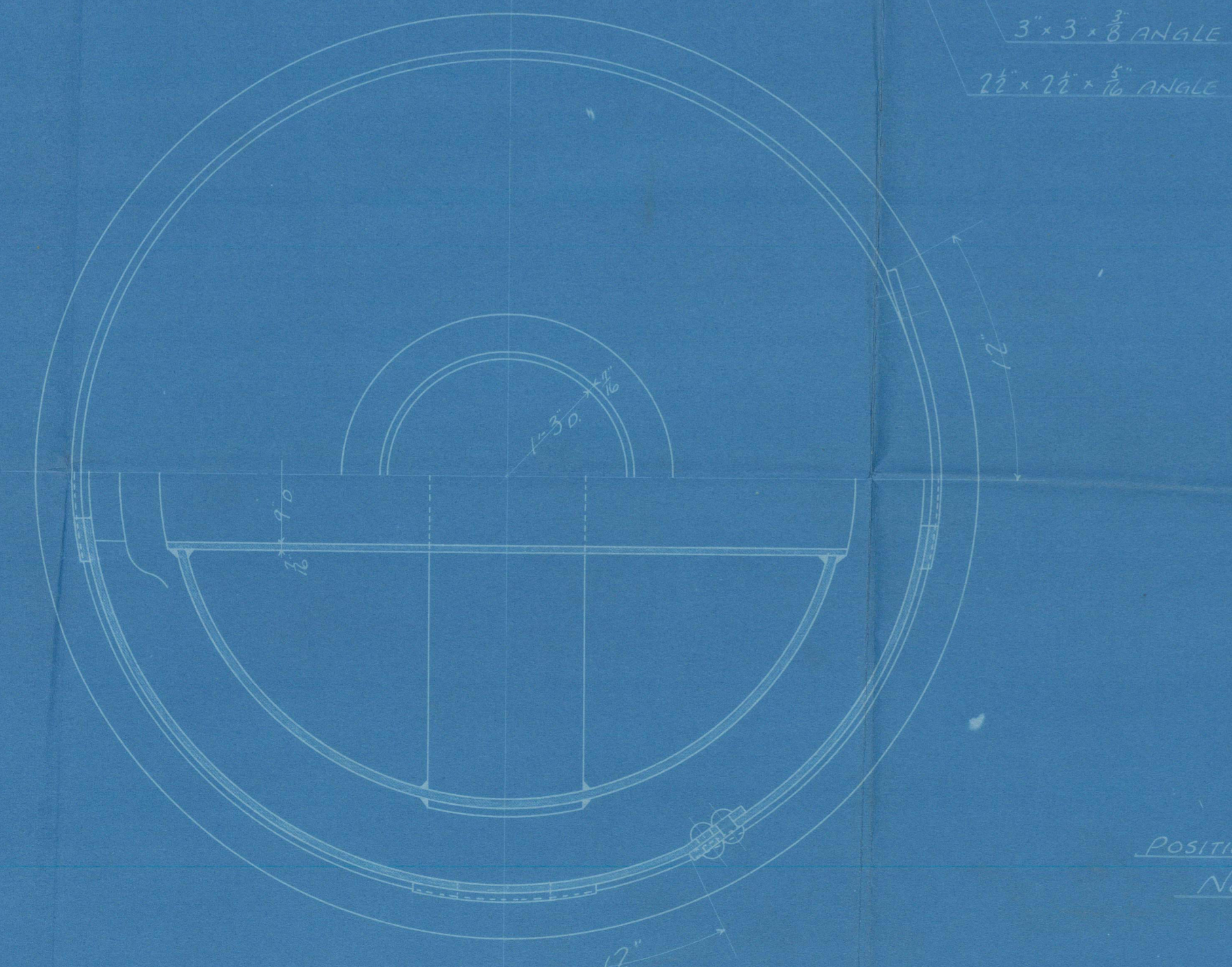
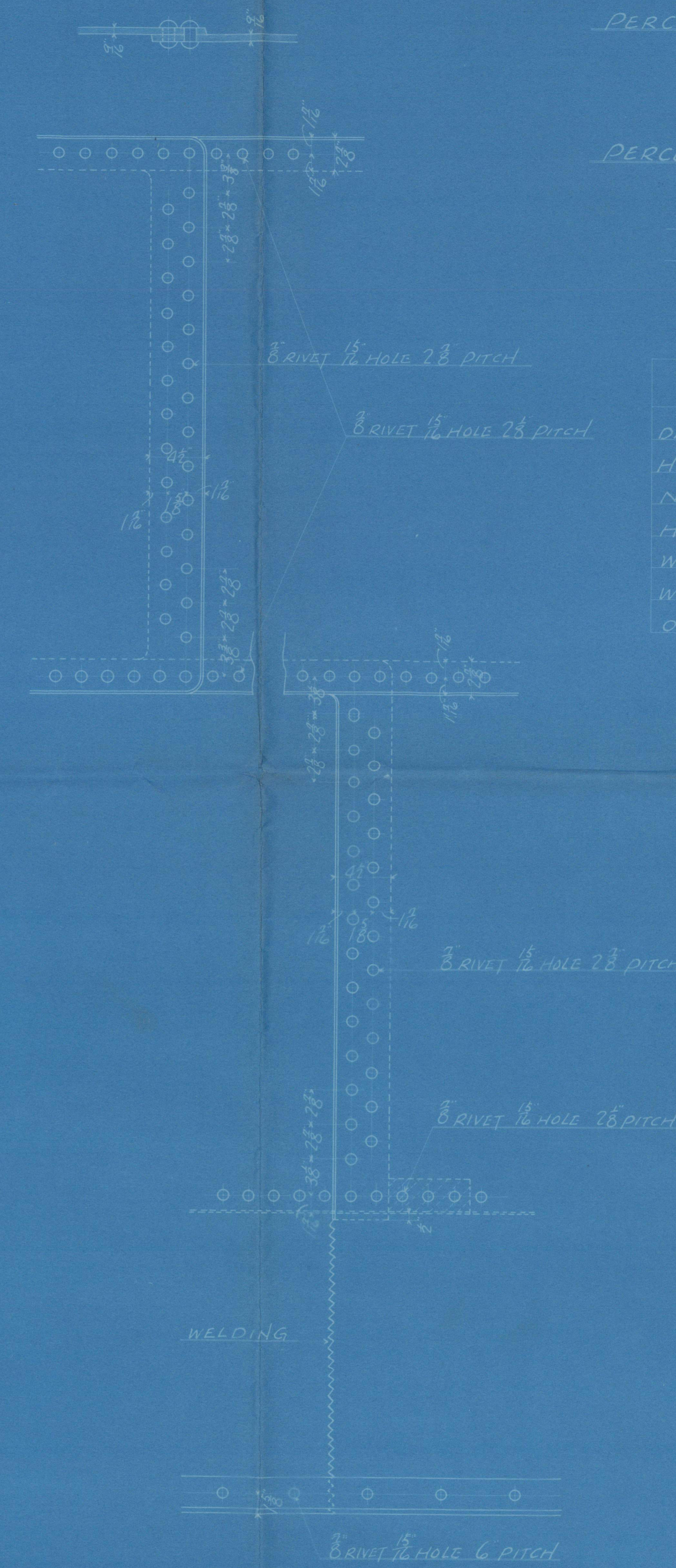
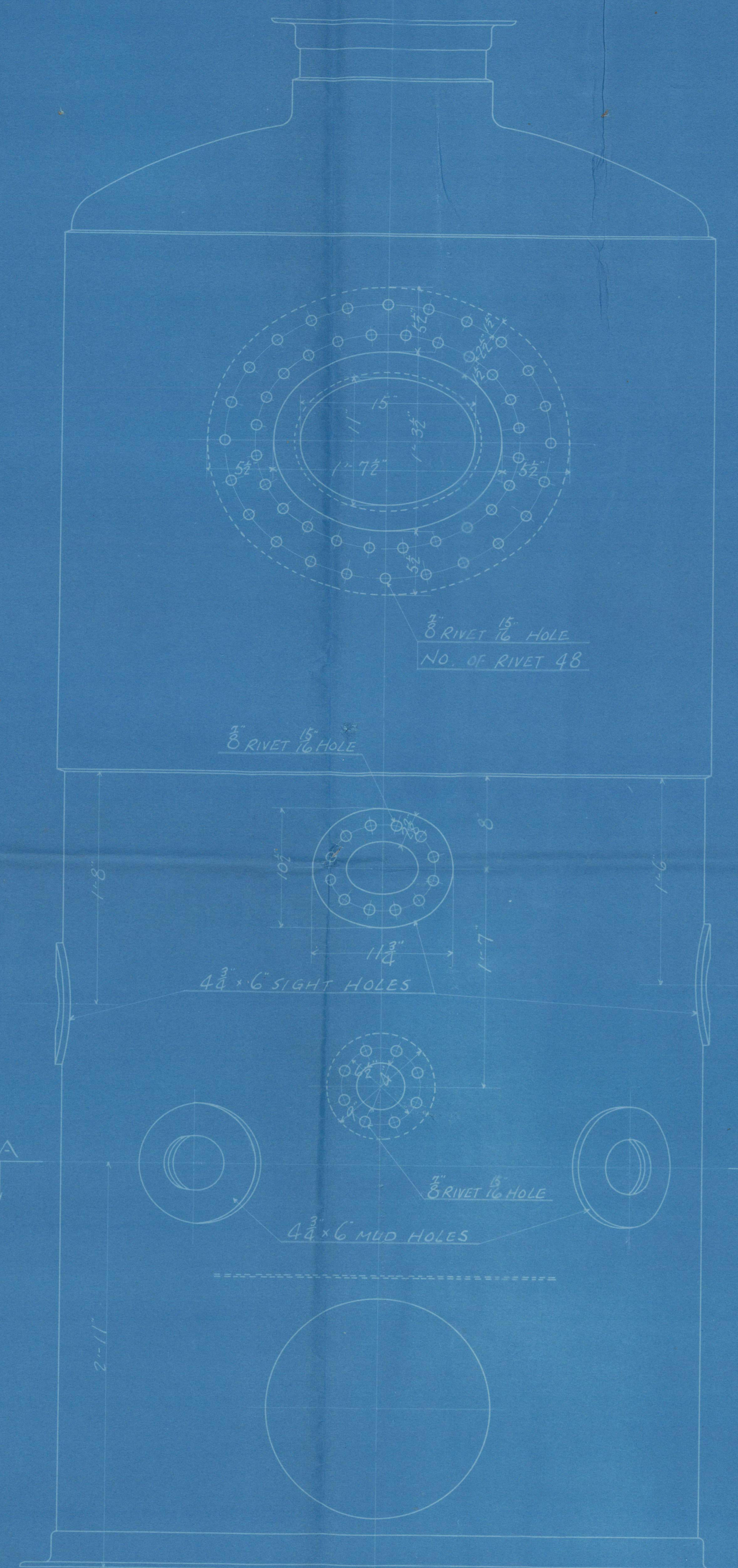
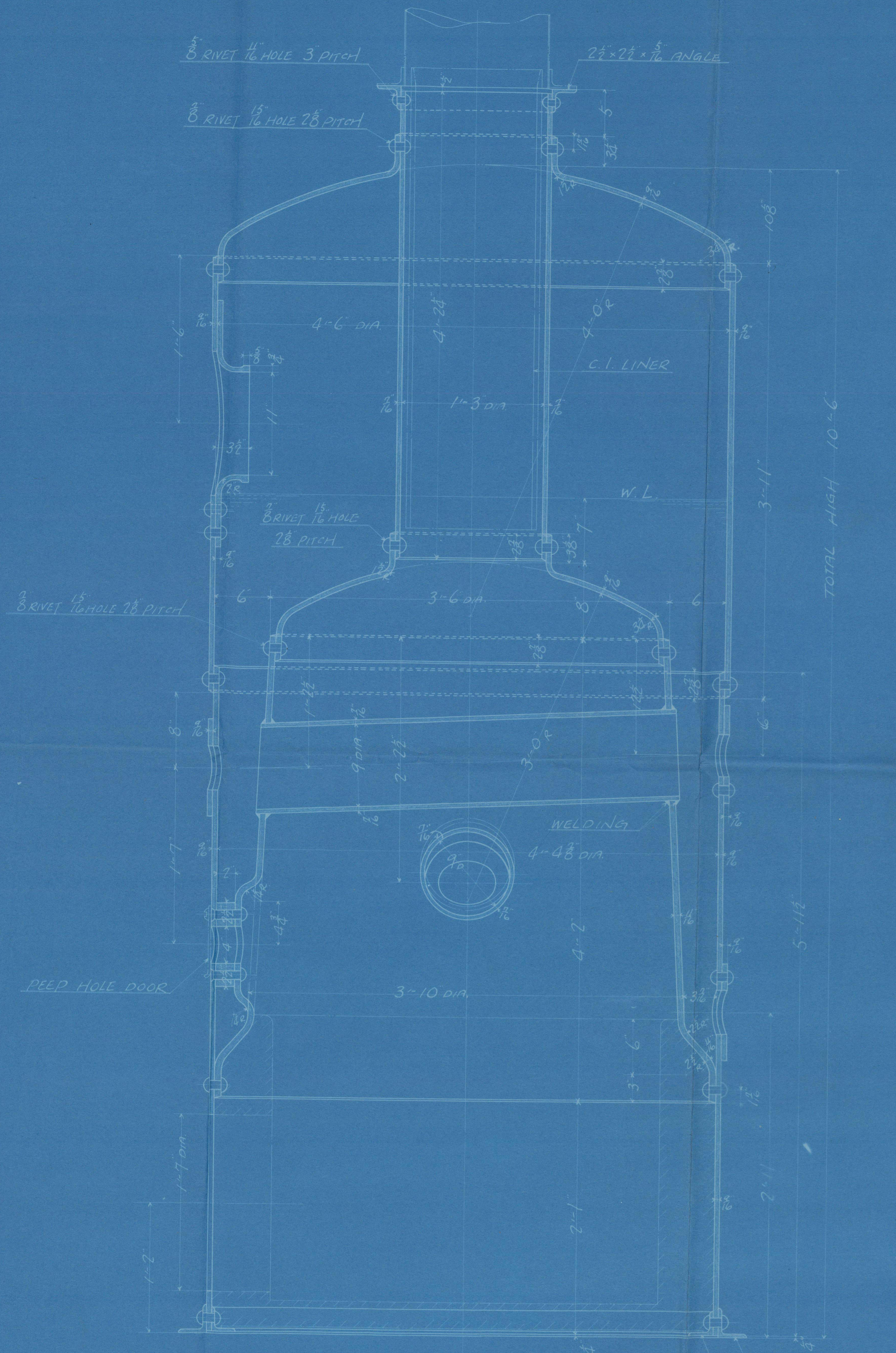
高度 12' = 120"  
 罐 B-1

大 10  
 小 1

常汽壓力 100 磅  
 水壓力 200 磅



Noted  
 Om.  
 18/2/29.



POSITIONS OF 4 1/2 x 6 MUD HOLES  
 NO. 4 IN CIRCUM\*

TAPER LINER OR SCORCH

L.O

Mitsui Bussan Kaisha

ロイフ行

BUILDER'S No. 159-162

VERTICAL BOILER

~~Warrant~~

Jensen Marn

Kobe 65-36

APPROVAL IS REQUESTED.

RETAIN  
WITH ORIGINAL AND ONE COPY  
TO BE RETAINED BY THE OWNER.



© 2021

Lloyd's Register  
Foundation

W1320-0246