

STEEL BOILER FOR STAL STEAMER (N^o 10565)

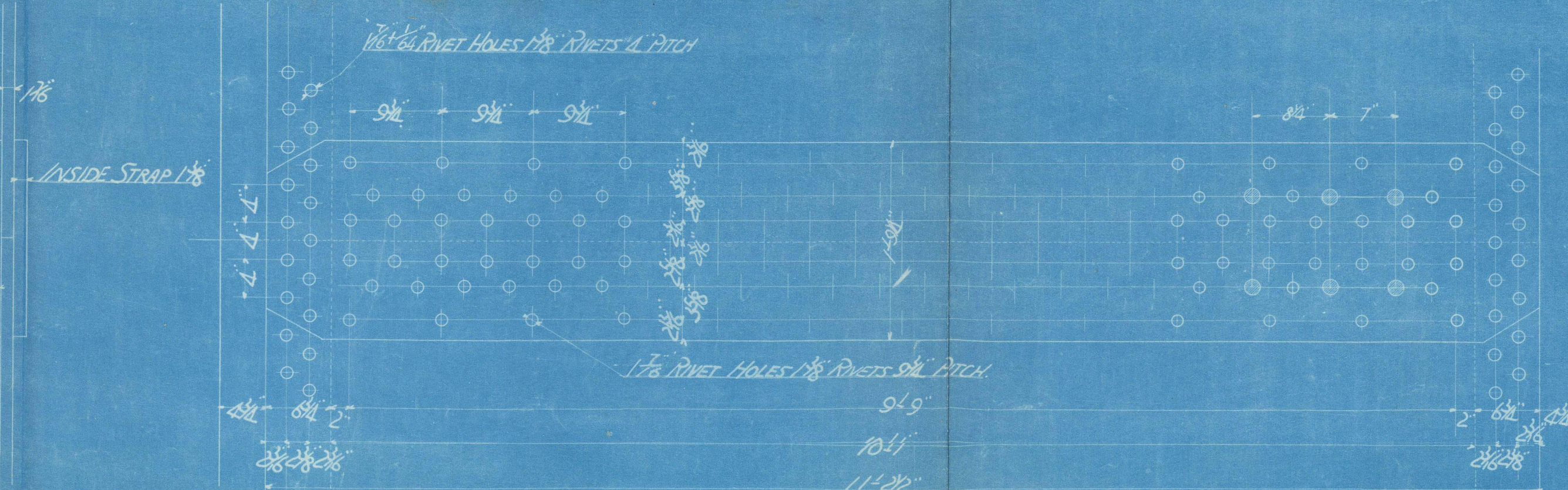
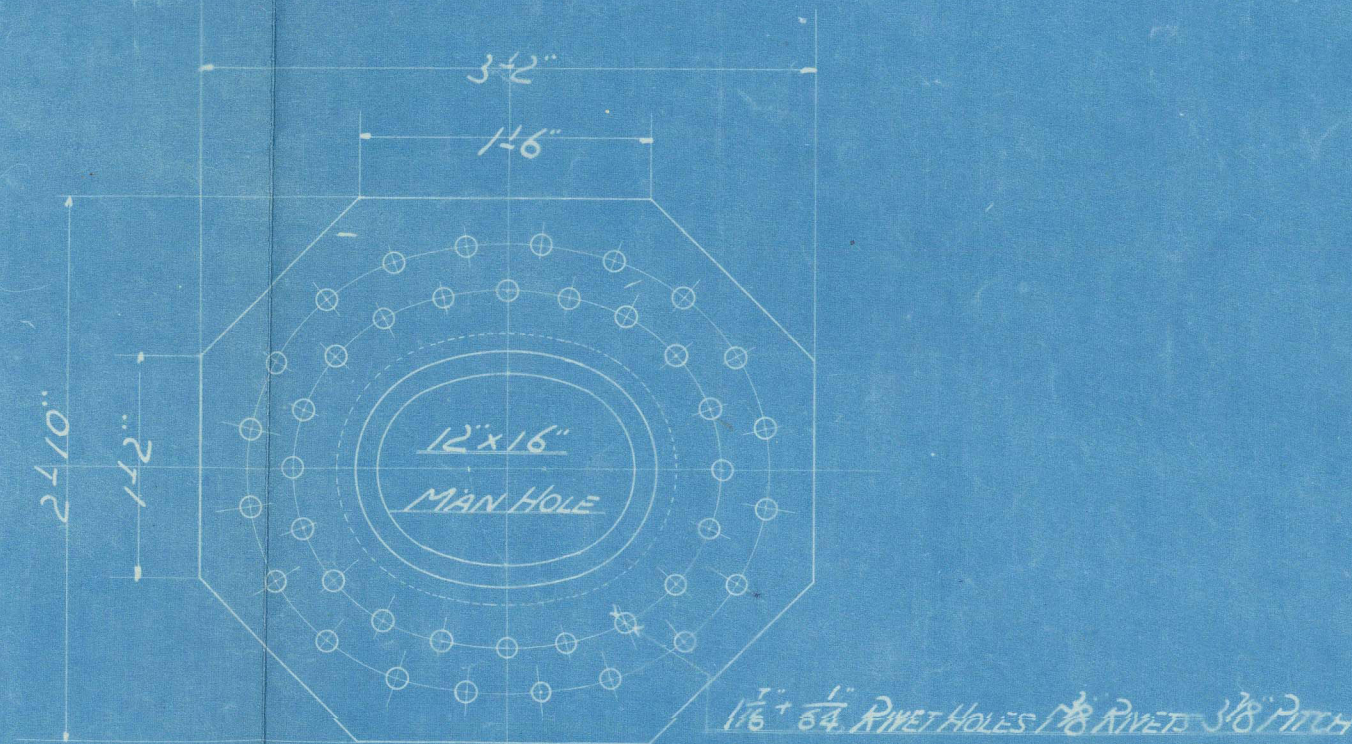
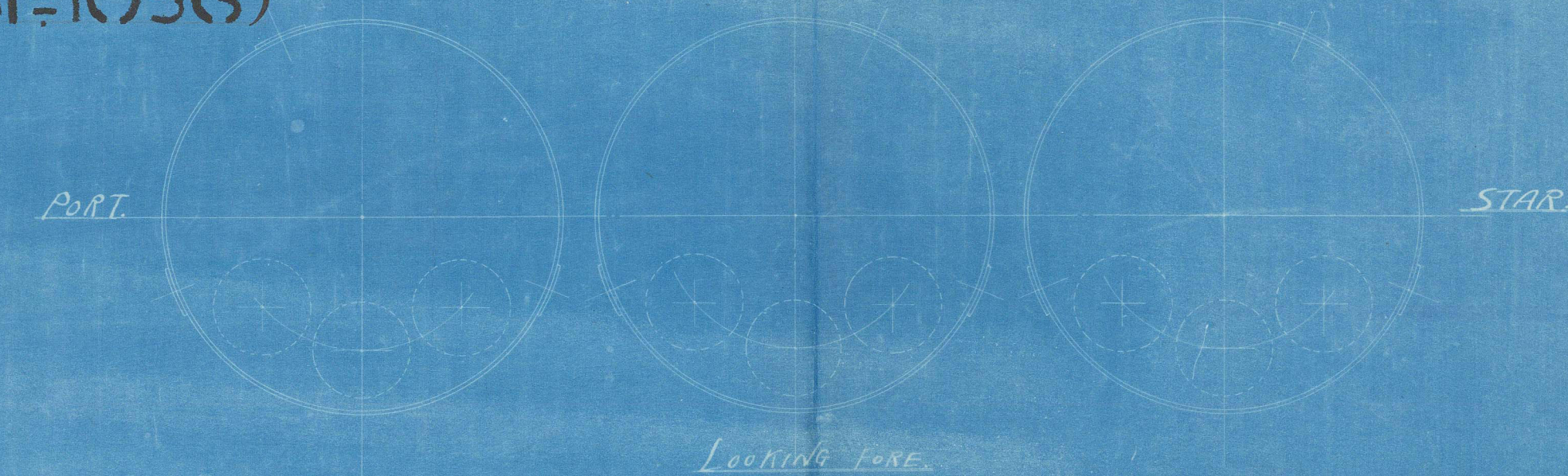
W.P. = 230 ^{LBS}/_{sq. in.}

SCALE 1 IN TO ONE FT.

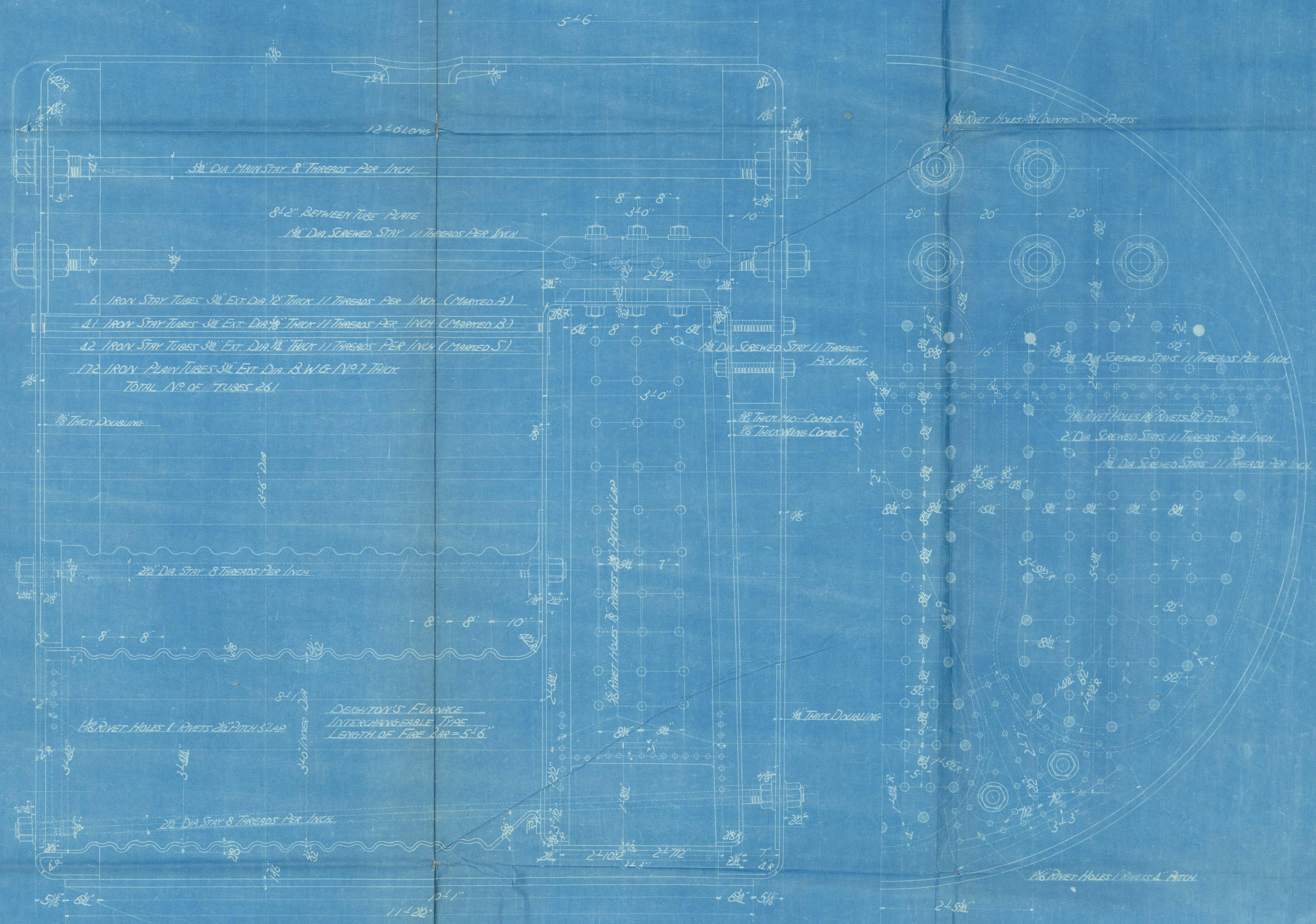
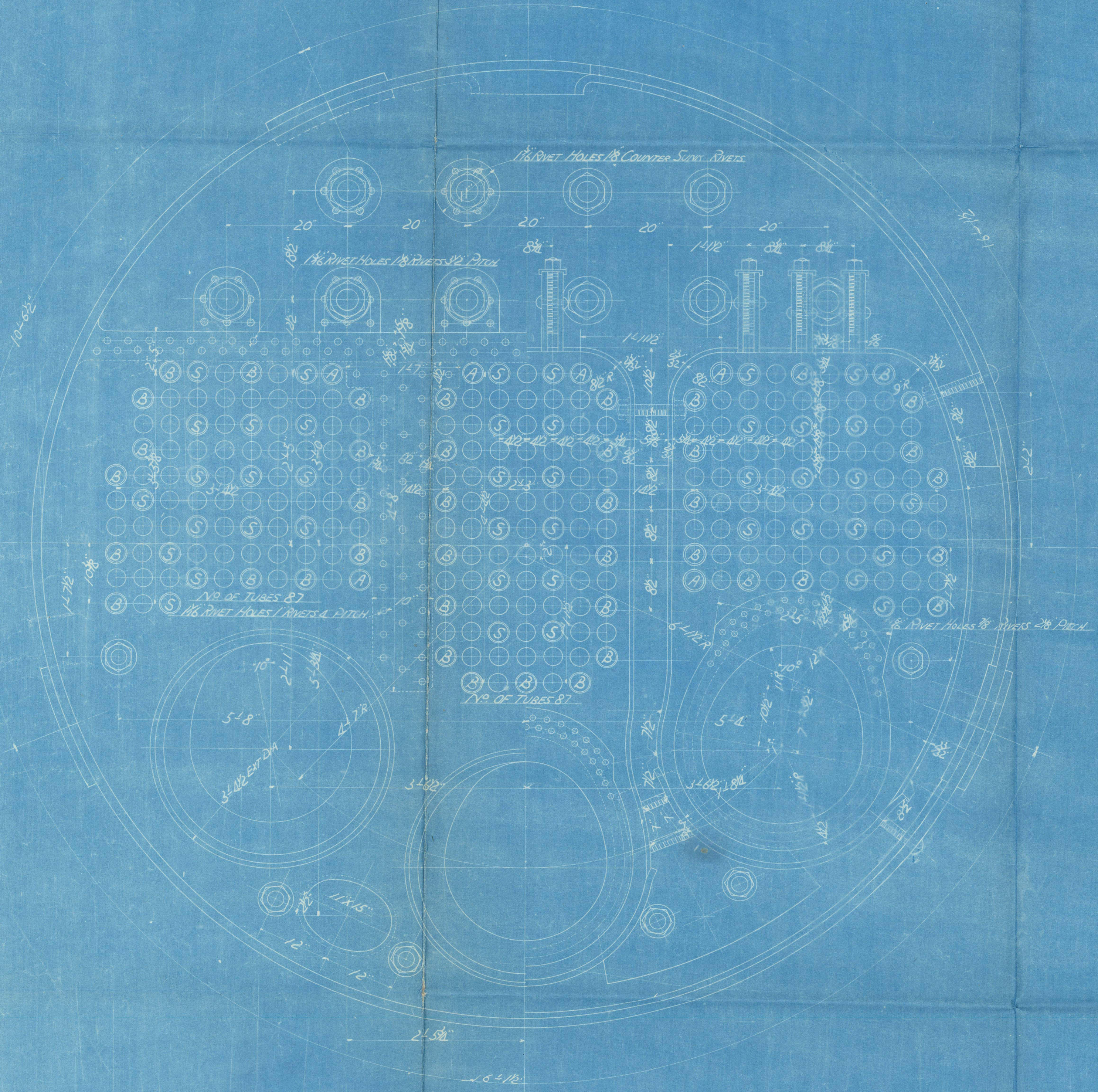
ONE OFF (FOR CENTER BOILER)

TENSILE STRENGTH OF SHELL PLATES

TO BE NOT LESS THAN 26.79 ^T/₁₀ (60000) ^{LBS}/_{sq. in.}



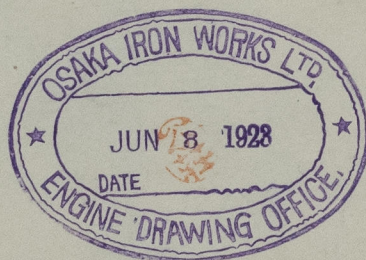
PARTICULARS (ONE BOILER)	
HEATING SURFACE OF TUBES	1815.4 ^{sq. ft.}
COMB. C.	230.7 ^{sq. ft.}
FURNACE	130.2 ^{sq. ft.}
TOTAL HEATING SURFACE	2176.3 ^{sq. ft.}
TOTAL GRATE AREA	49.5 ^{sq. ft.}
AS 1/4"	43.92



OSAKA IRON WORKS LTD.
BUILDERS NO. 1056
STEEL BOILER
(CENTER) Z PORT
DRAWING NO.
DATE.

*This is a copy of plan stated to have been
approved by A.L.J. July 1918.*

Stigo Hean.



RETAIN



© 2021

Lloyd's Register
Foundation

W1320-0034