

№ 219 TANKLICHTER

LANGSDOORSNEDEN & DEKKEN

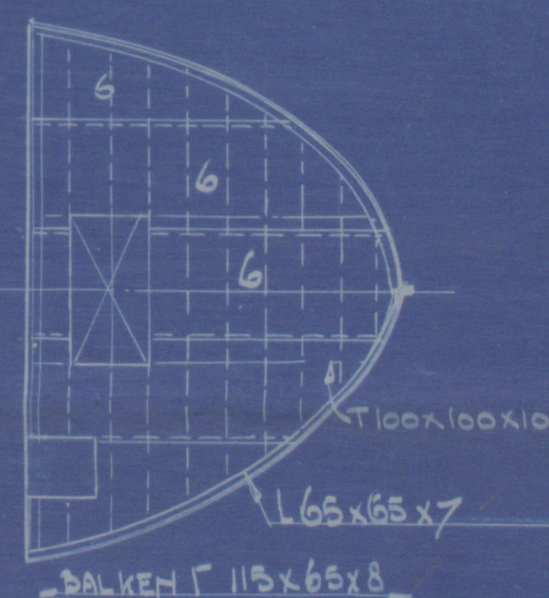
SCHAAL 1:100

N.V. SCHEEPSBOUWWERF
1/2 DE GIJOT EN VAN VLIET
SLIKERVEER
(Bij Rotterdam.)

LLOYDS REGISTER OF SHIPPING

CLASSE * 100 A1, CARRYING PETROLEUM IN BULK.

BAKDEK.



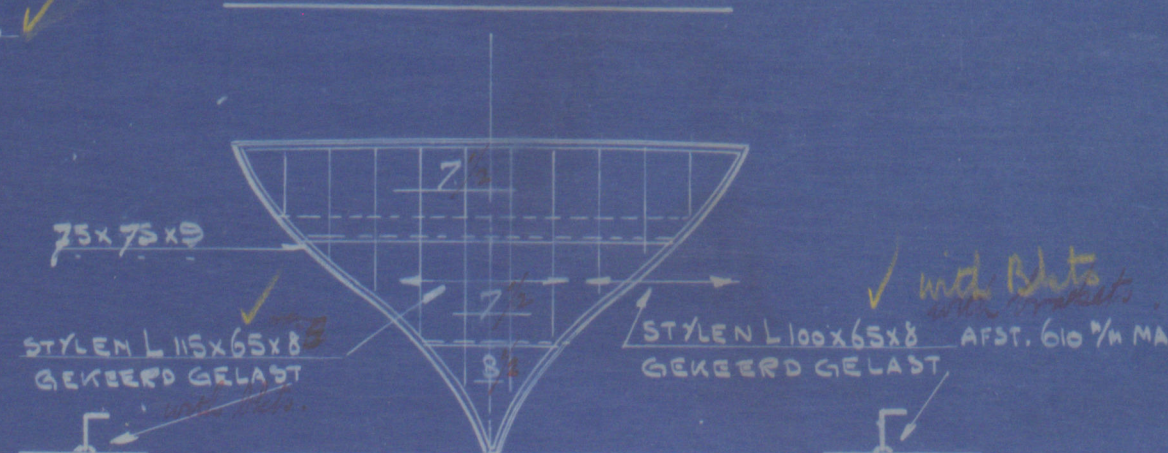
HOOFDRAFMETINGEN.

LENGTE TUSSEN L.L. 40. M
BREEDTE OP SPANTEN 7.7 M
HOLTE IN DE ZIJDE 3.05 M.

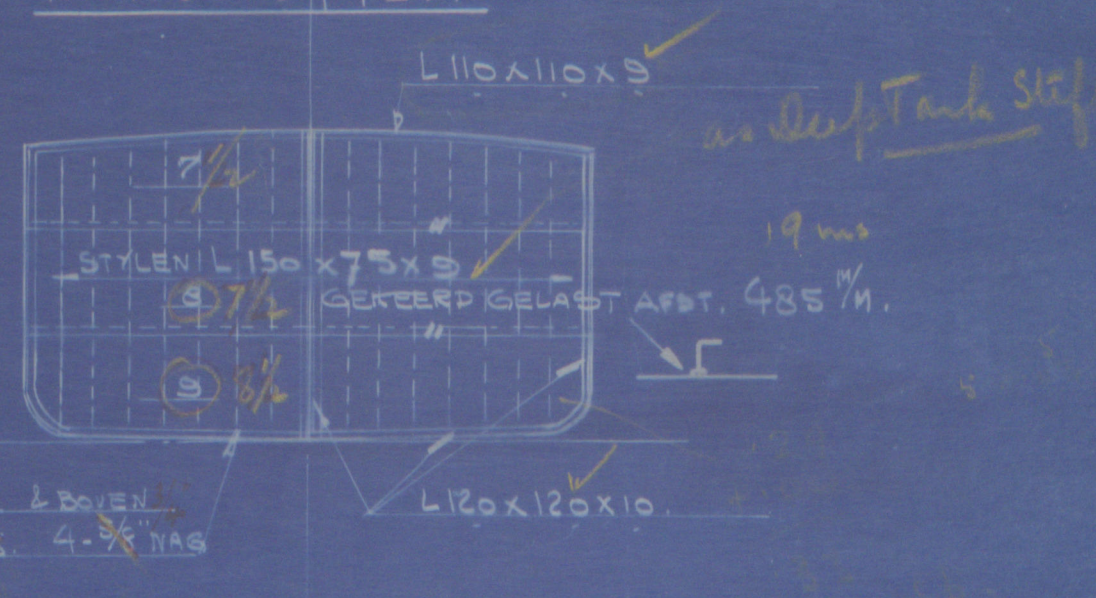
LLOYDS' NUMMERS

$D = 3.95$
 $L \times D = 40 \times 3.95 = 158$
 $L \times (B+D) = 40 \times (7.7 + 3.95) = 466$
 $\frac{L}{D} = 40 : 3.95 = 10.12$
 $d = 3.95 - 0.36 = 3.59$

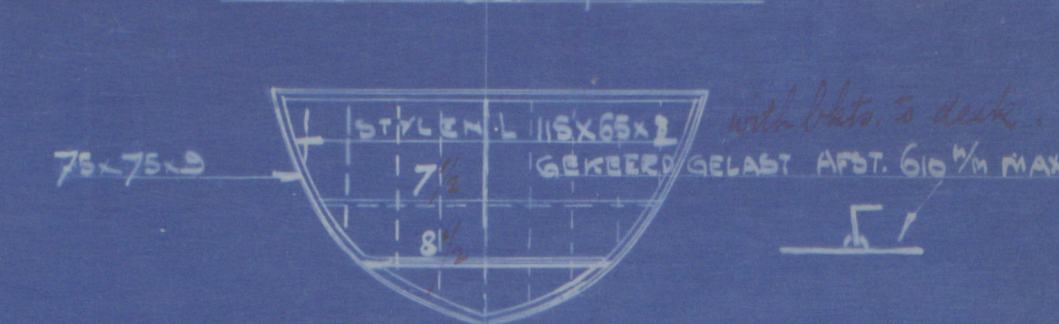
ACHTERPIEKSCHOT 5



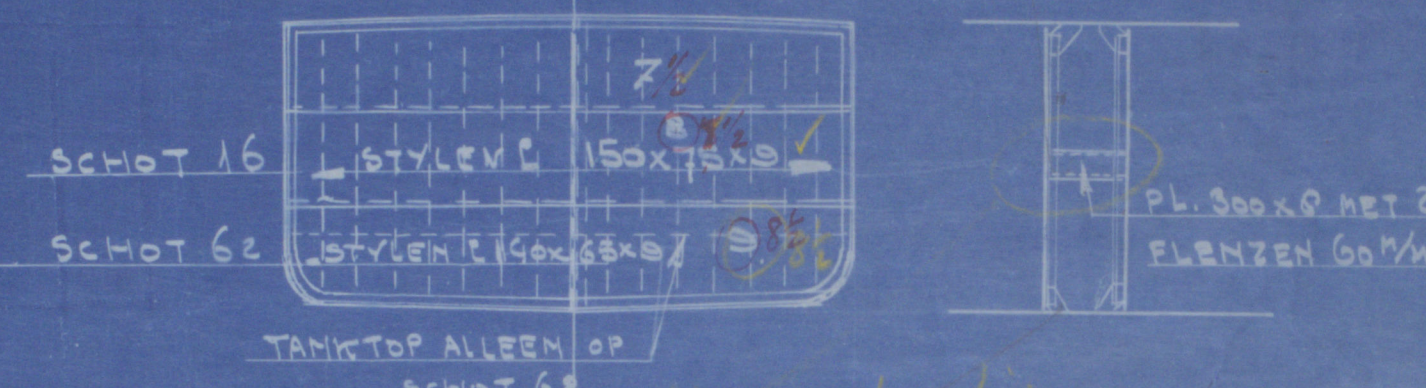
TANKSCHOTTEN



VOORPIEKSCHOT 63



TANKSCHOTTEN 16 EN 62



If cross bracing in
any stiffener size of
stiffener in Bldg 16, 18 & 60
may be reduced.

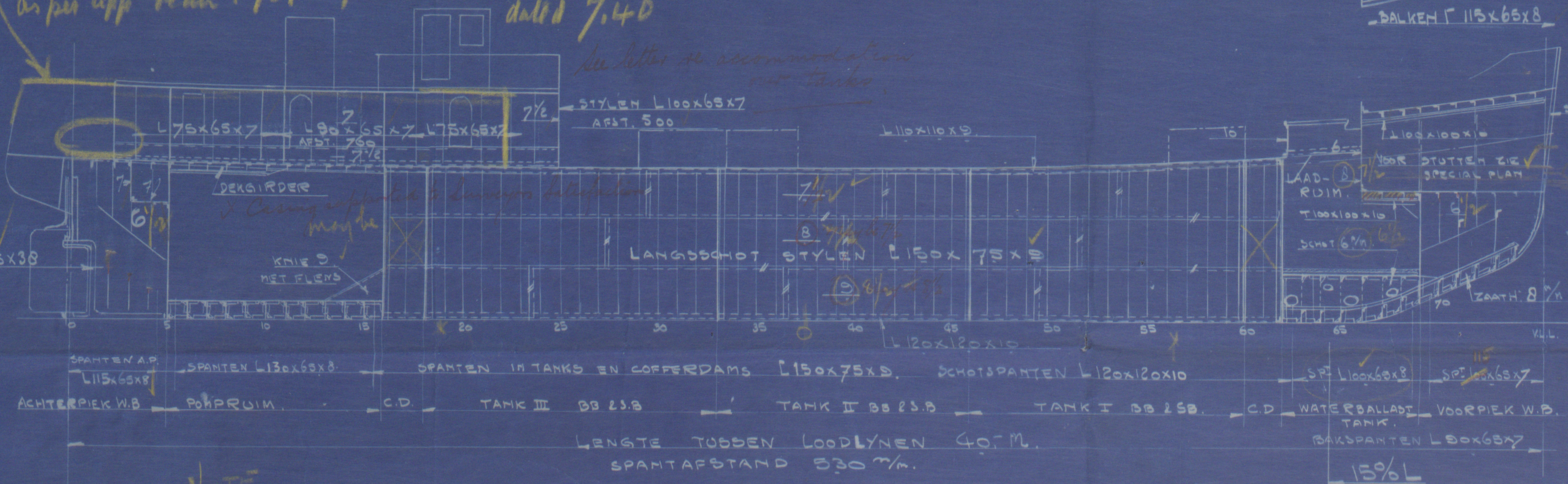
6/12/37

219003



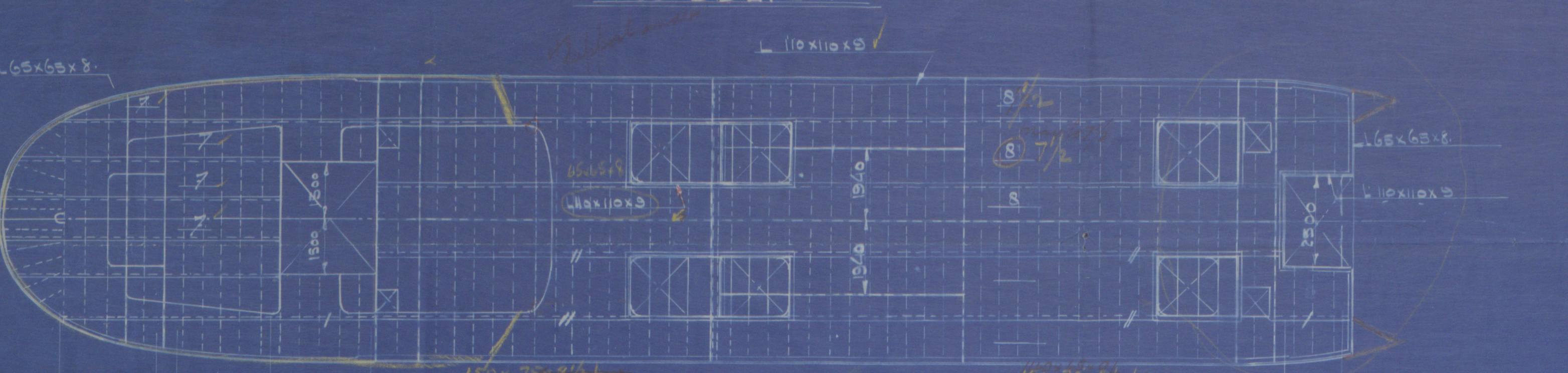
© 2019
Lloyd's Register
Foundation

After Bridge fitted
on per app. plan & got report - 11/13013
dated 7.4.0

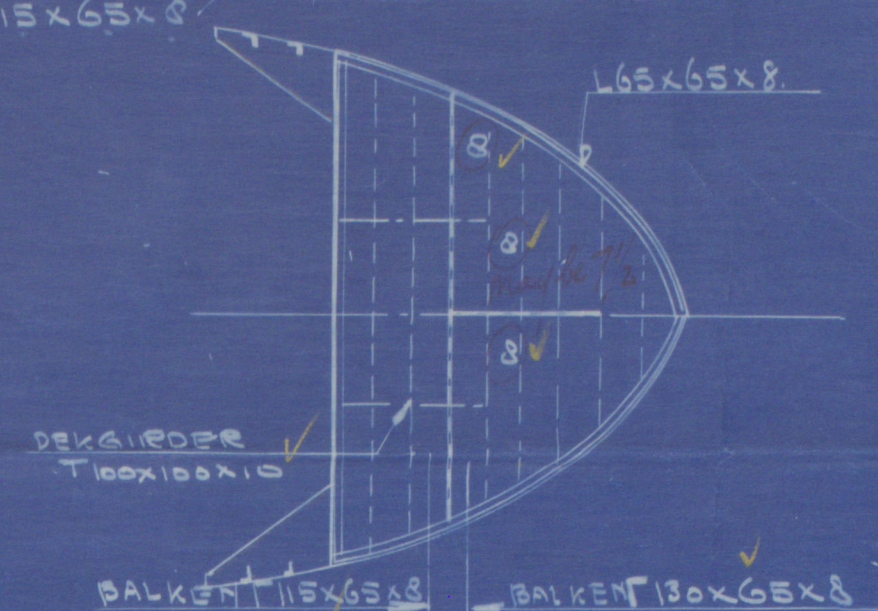


NOTE

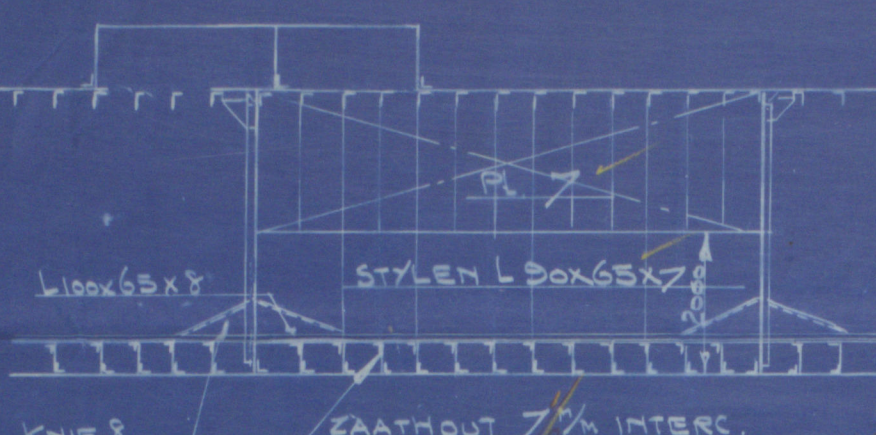
HOOFDDEK 1



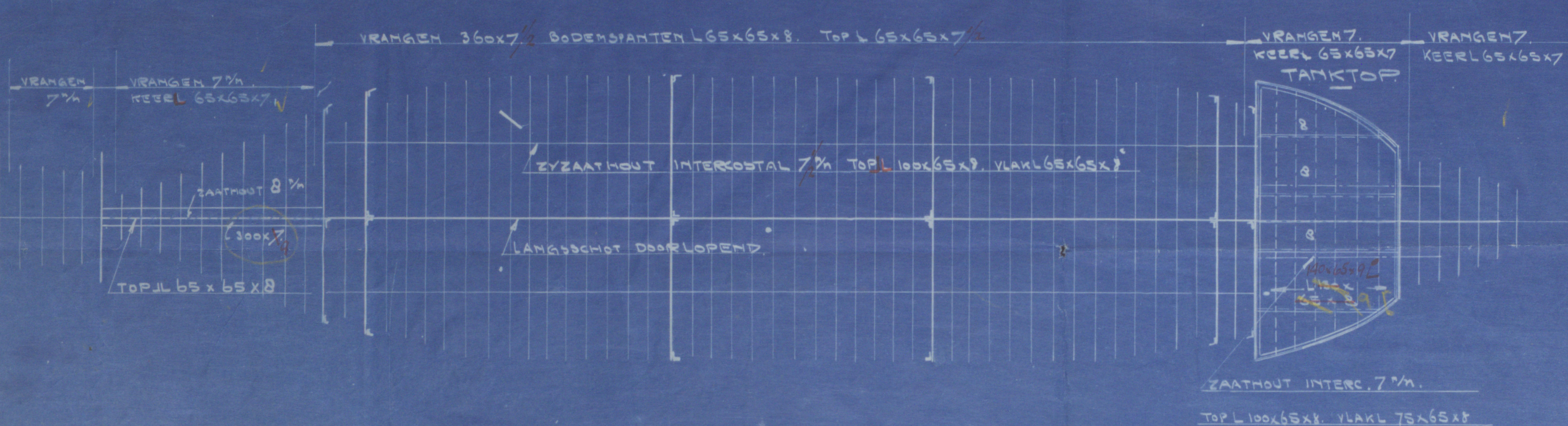
PIEKDEK



SLINGERSCHOT TANK 2



VRANGEN EN ZAATHOUTEN.



100

120 -
80 -
200
120
/



© 2019

Lloyd's Register
Foundation

W132-0096

219003

77

(2)

UNO

Rot. 27262.

DE GROOT & V. VLIET

219.

PROFILE.

DECKS.

BULKHEADS.

W1132-0096



© 2019

Lloyd's Register
Foundation