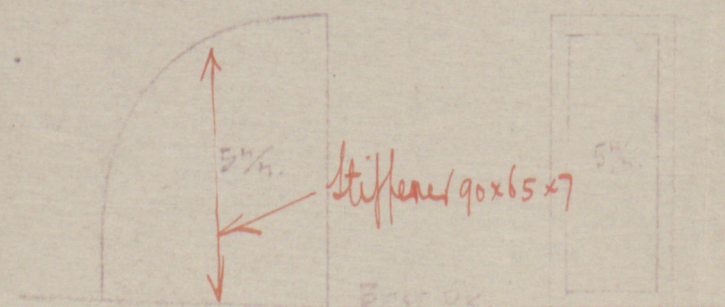
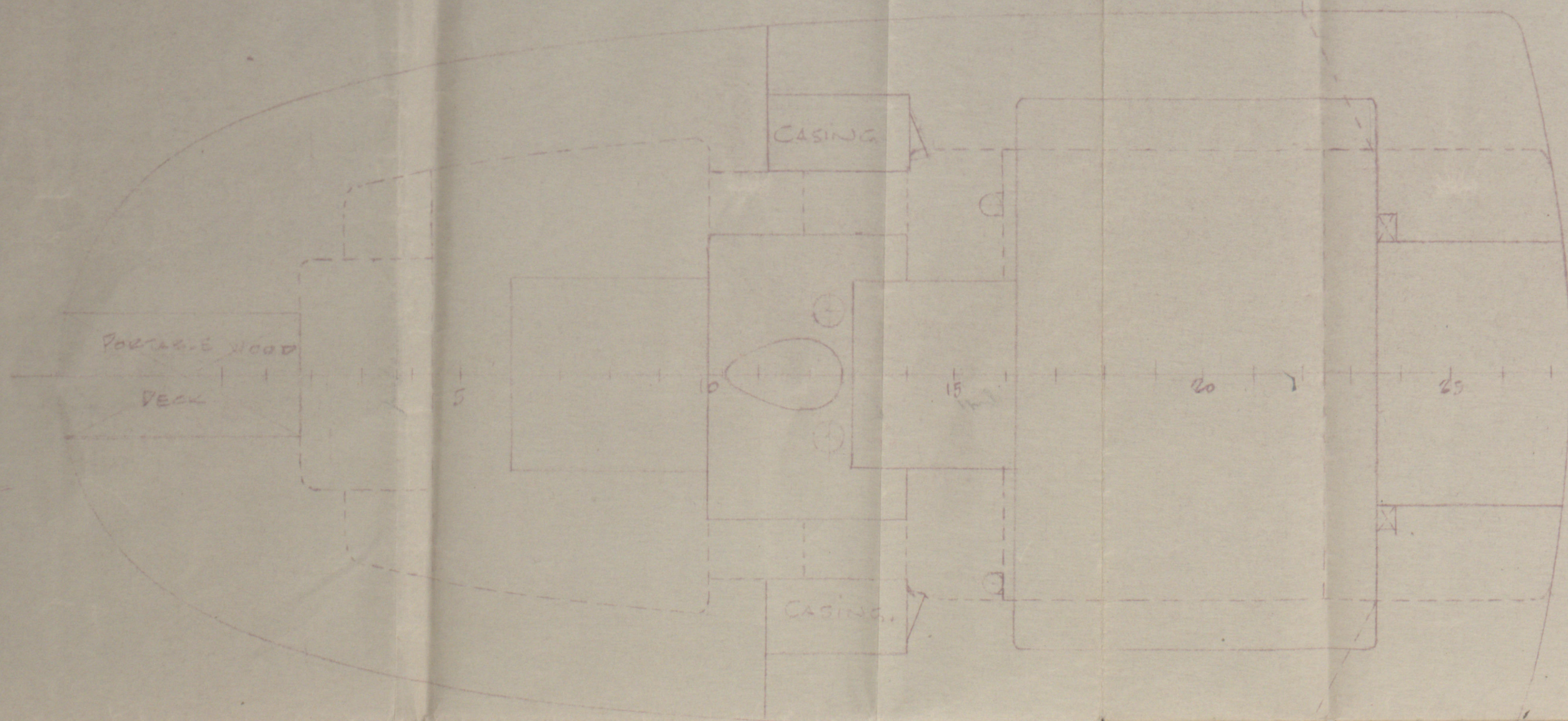
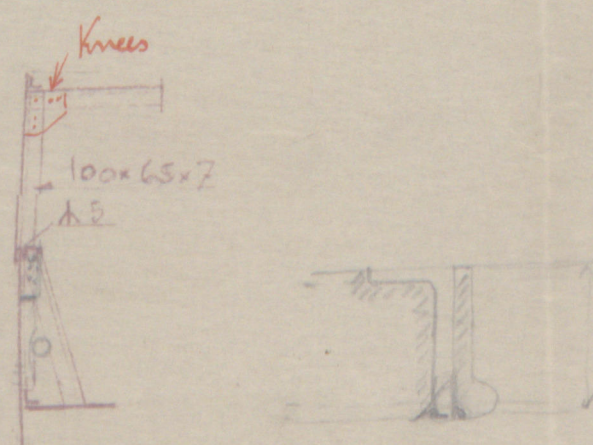
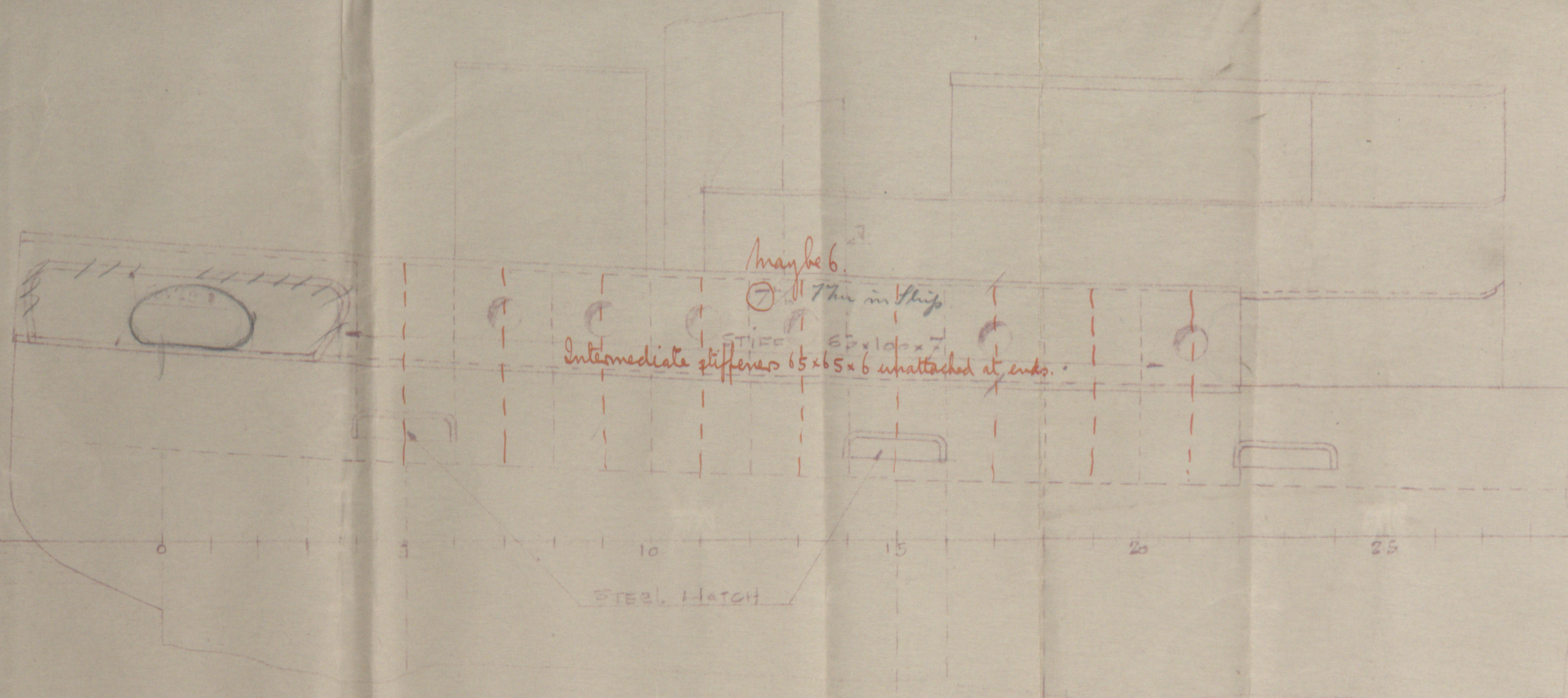


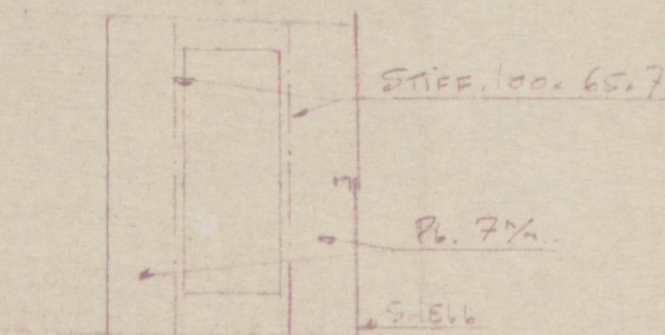
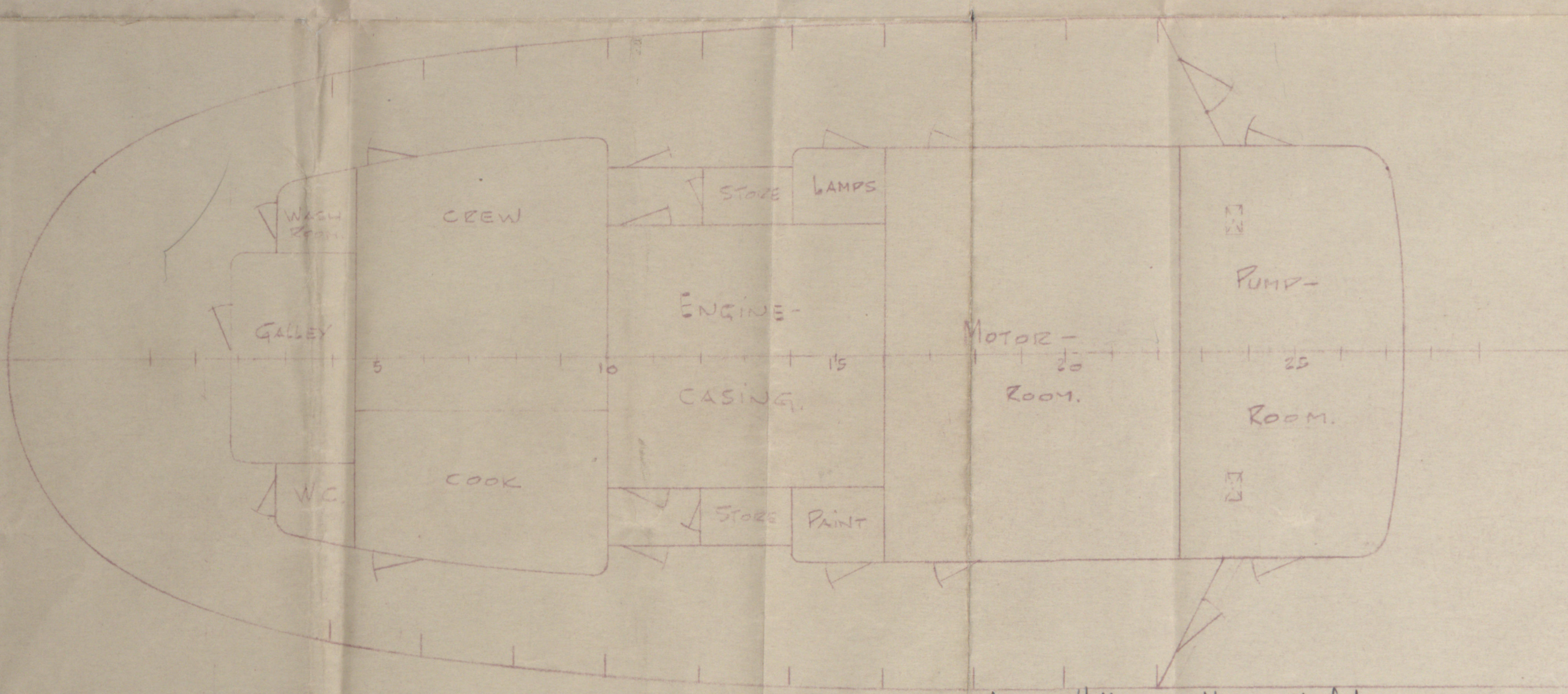
Port deck and beams to surveyors satisfaction.



CASING 100x65x7



LT of hull = 32'
Area reqd = 9.7 sq ft.
Req 2x3.4x7.5 = 5.1 sq ft.



B.H. FR. 22-28 1/2

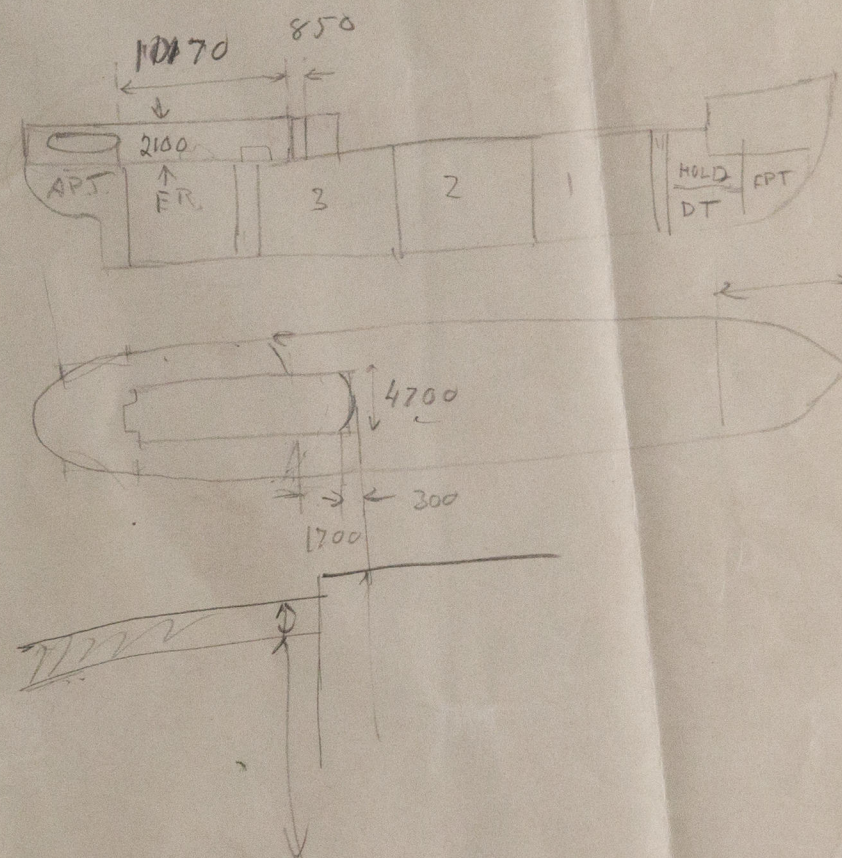
Note:- Following approved at ship -
Frame spacing maximum = 28" with shell
plating increased to 7". All frames to
be 100x65x7 L. with brackets to beams
where practicable. Where no brackets, back
logs with three rivets to be fitted at top.
3 Rivets at bottom to be spaced 3 1/2 dia's apart.
Frames to be continuous, or lapped onto
bulkhead stays, which are all to remain in ship.

29.4.40
17.6.40.

BEST. No.	UTT. GGR. No.	BESTÄLLARE	DATO	ANMÄRKNING
		M/S "UNO"		SKALA 1/50
		FOREMÅL	PROPOSED SHELF	
		AFTT		
RITAD	KONTORAD	GRANSKAD	SÖCKRAD	
29.4.40	1.10	1.10	1.10	
LINDHOLMEN				© 2019
GÖTENBURG SWEDEN				Nº 22116

"UNO"
Deck Shelter Plan
Gol-13013

X1132-0094



X1132-0094



© 2019

Lloyd's Register
Foundation