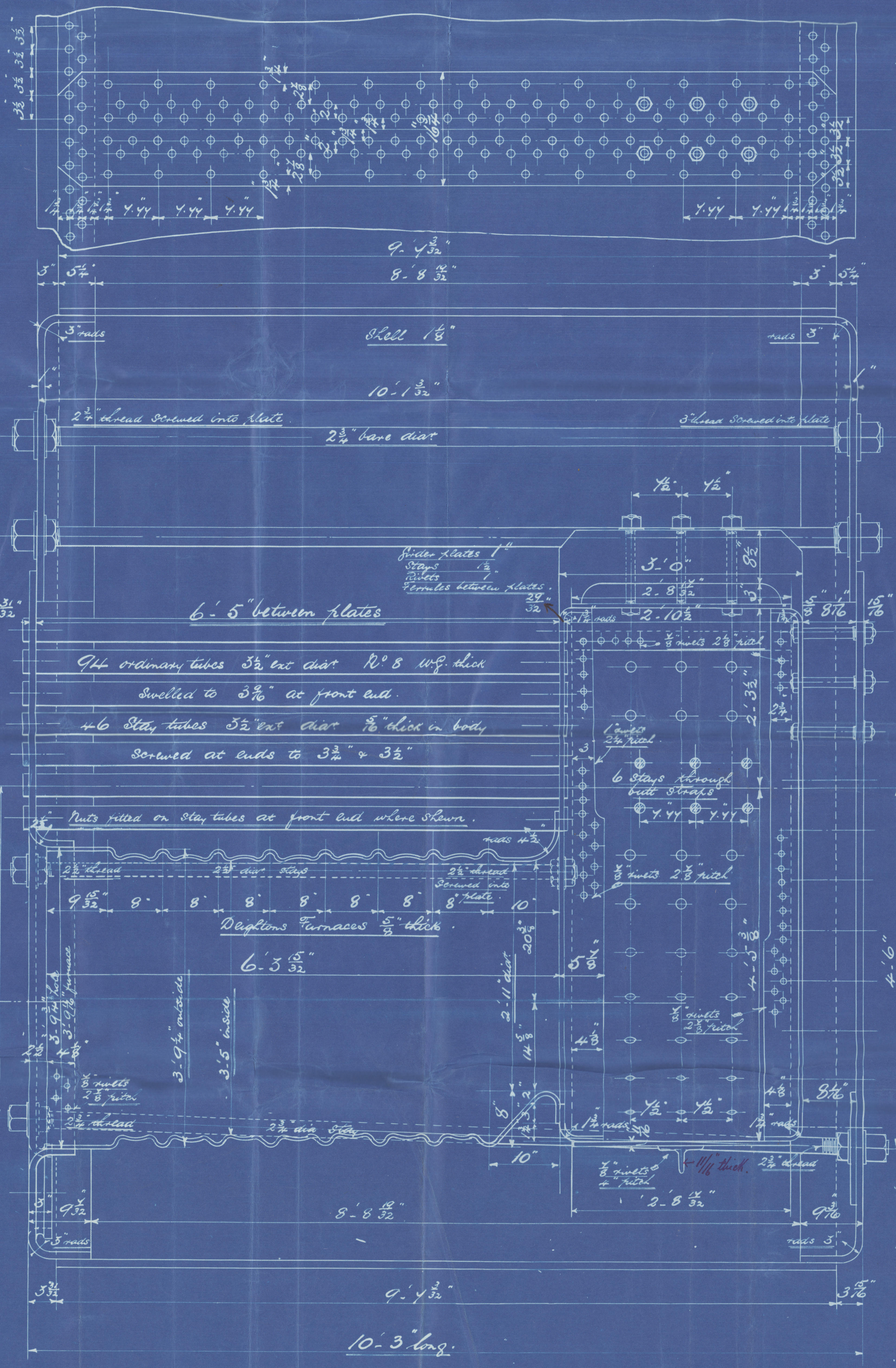
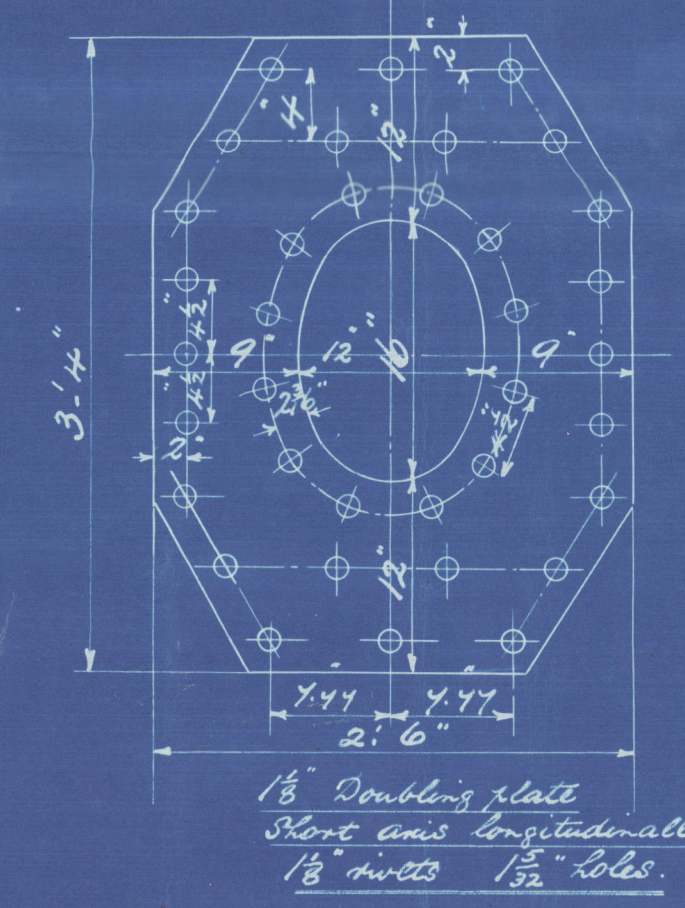


DIA^R OF BOILER 12'-0"
 LENGTH OF DO 10'-3"
 NUMBER OF TUBES 140
 LENGTH OF DO 6'-5" between plates
 DIA^R OF DO 3 1/2" AREA THRO TUBES 4.4 sq ft.
 HEATING SURFACE IN TUBES 823 sq ft.
 TOTAL HEATING SURFACE 1090 sq ft.
 FIRE BAR SURFACE
 DIA^R OF SAFETY VALVES
 CUBIC FEET OF STEAM SPACE 6" above c.c. 235 cu ft.
 WORKING PRESSURE 200 lbs. LLOYDS

12'-0"
 10'-3"
 140
 6'-5"
 3 1/2"
 4.4 sq ft.
 823 sq ft.
 1090 sq ft.
 235 cu ft.
 200 lbs.



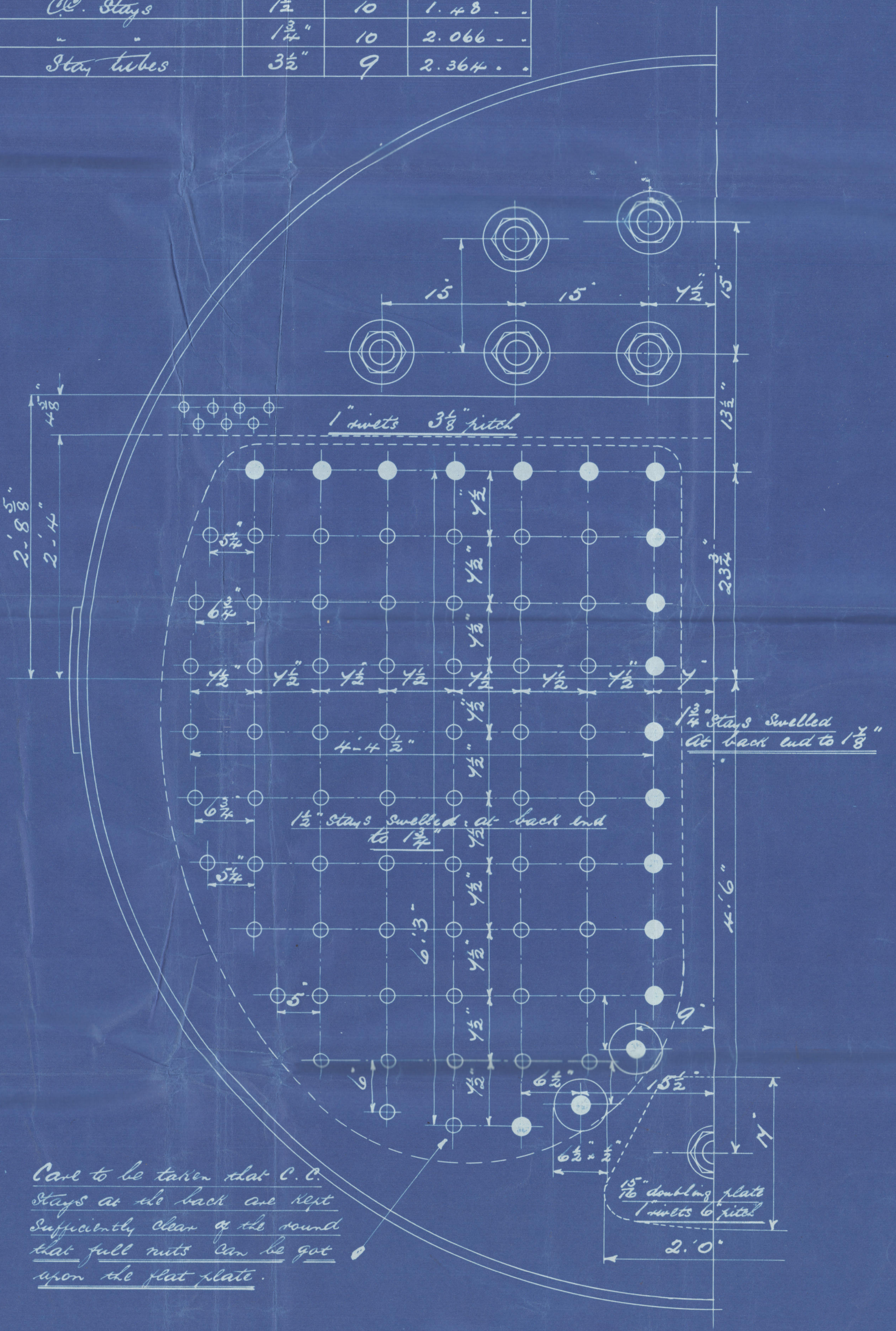
Shell plates & Doubling plate 18" thick

Circumferential Stays		Longitudinal Stays	
18 rivets	1 1/2" holes 3 1/2" pitch	18 rivets	1 1/2" holes 4" pitch
70 Rivets	66	70 Rivets	85.1
70 Rivets	44.6	70 Rivets	89.2

Note:
 The plates rivets & stays of steel by the Siemens Martin process.
 The inside strength of the steel plates to be between 24 & 32 tons per sq in.
 that of the furnaces from 26 to 30 tons per sq in.
 All rivet holes drilled throughout the boiler close in shell after the plates are bent.
 All flanged plates to be annealed after flanging.
 Manhole doubling to be fitted outside shell plate.
 C.C. Stays.
 All C.C. Stays and the exception of those in girders & those marked thus are 1/2" dia. Swelled to 1 1/2" at one end with plain part not screwed between threads.
 All marked thus are 1 1/2" Swelled to 1 1/2" at one end with 1 1/2" plain part.
 Rivet stays are 1 1/2" at both ends with plain part between threads.
 All screw stays screwed into both plates with nut at each end.
 Washers fitted on outside of boiler only. None inside C.C.

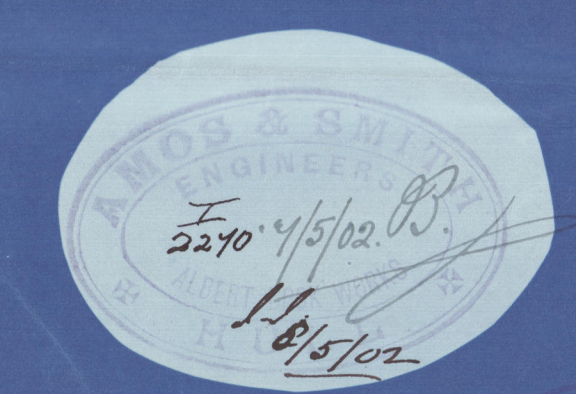
Particulars of Staying

Stays	Dia ^r	Length	sq. Area
Main Stays	2 1/2"	6	5.055 sq in.
Tube plate Stays	2 1/2"	6	4.108 "
Bottom Stays	2 1/2"	6	5.055 "
C.C. Stays	1 1/2"	10	1.48 "
	1 1/2"	10	2.066 "
Stay tubes	3 1/2"	9	2.364 "



Care to be taken that C.C. stays at the back are not sufficiently clear of the round that full nuts can be put upon the flat plate.

3 STEEL BOILERS.
 NOS 328, 9 & 330.



AMOS & SMITH
 ENGINEERS
 ALBERT DOCK WORKS
 HULL



TITLE Steel Boilers
 FOR WHOM Messrs Parsons & Halliwell & Co.
 DATE May 4. 1902
 ORDER No 328, 9, 30
 IF MADE Yes
 SCALE 1/4" = 1 foot
 Lloyd's Register Foundation

6974.

© 2021
From AMOS & SMITH, HULL.

Enclosure for

Lloyds Surveyors

Hull

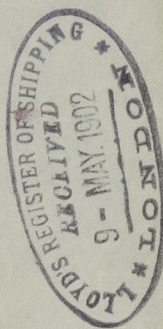
1/2
W1318-0207

Aulos & Lunntho Bolders

No 328. 329 + 330 -

for. Jekering + Malsane A. J. Ghr

2006



Bilder

RETAIN

s/s "Swan"

Hull Report No 15000

s/s Lord Salisbury
Hull Report No.



© 2021

Lloyd's Register
Foundation

W1318-0208 202