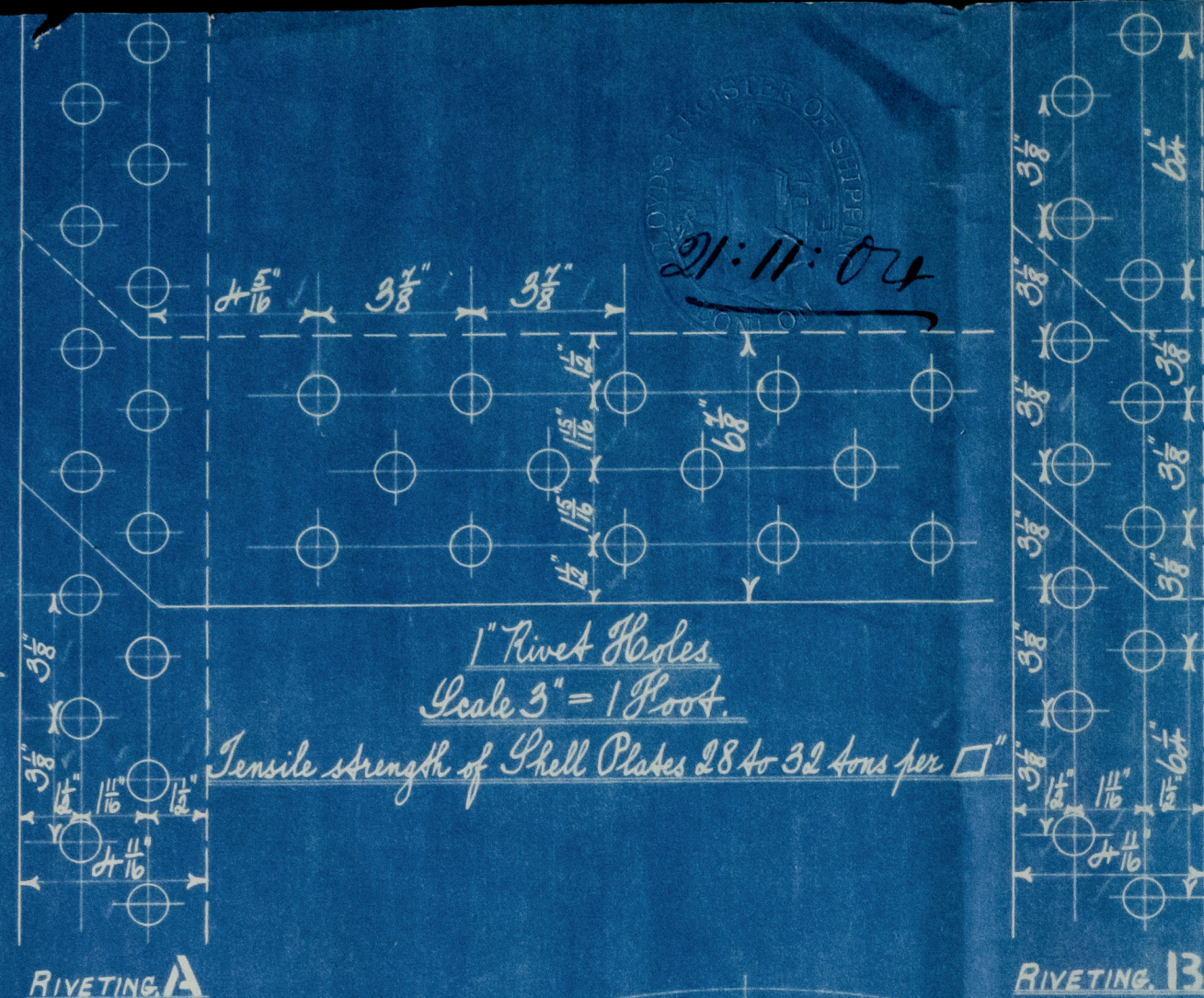


*Circumferential Seams 1<sup>st</sup> & 2<sup>nd</sup> Holes.*



## HORIZONTAL DONKEY BOILER

To Lloyd's requirements for a working pressure of 100 lbs per  $\square$   
All plates, rivets, stays & girders of Steel.      Tubes of Wrought Iron  
Scale 1" = 1 Foot      R.B.I.

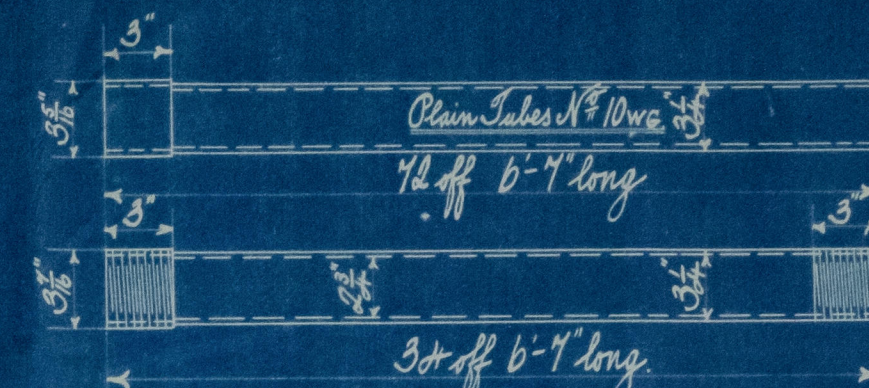
Living.

Front & Back Seams Double Rivetted 1" Rivet Holes  $3\frac{1}{2}"$  Pitch  $4\frac{1}{2}"$  Lap

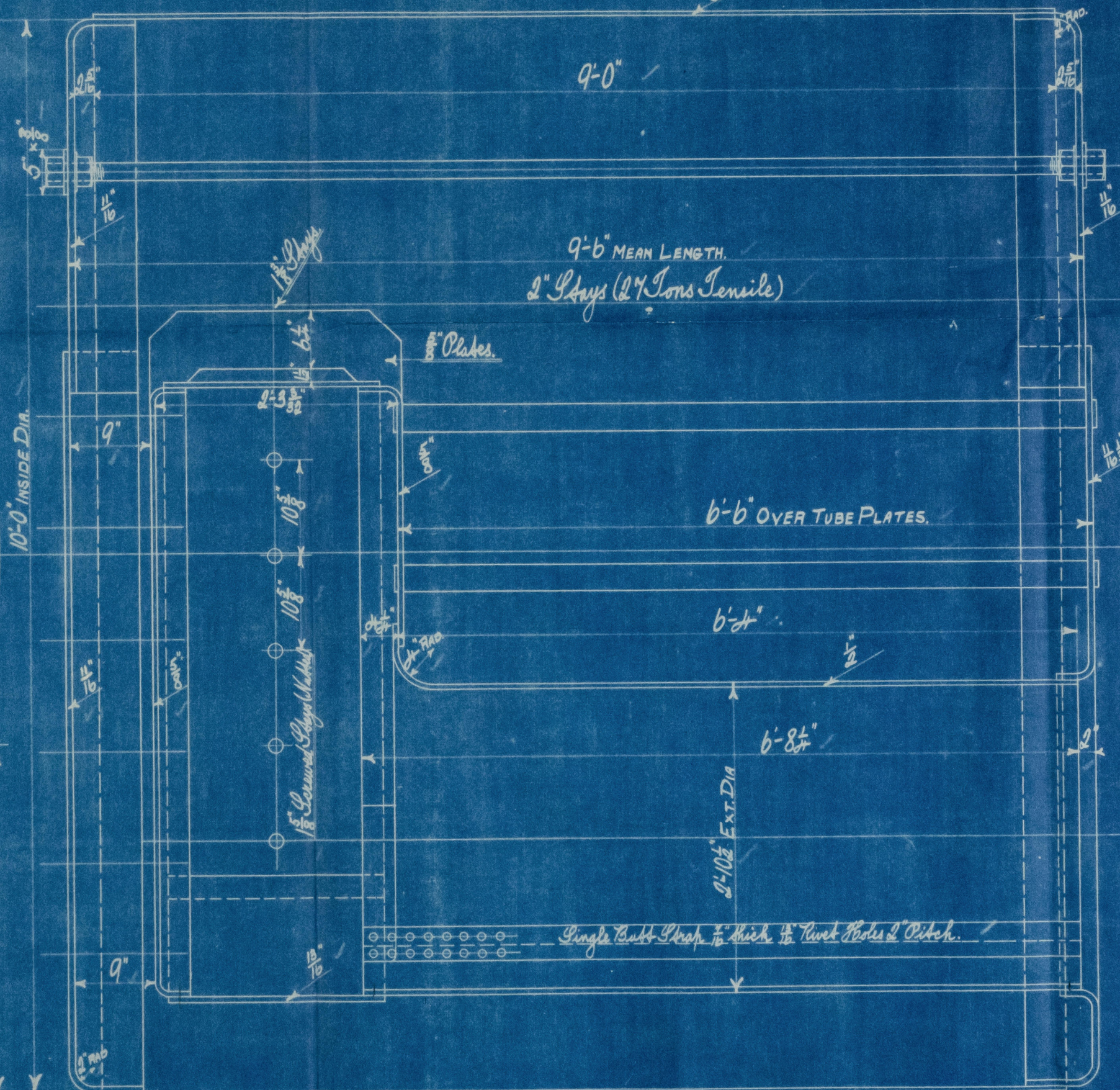
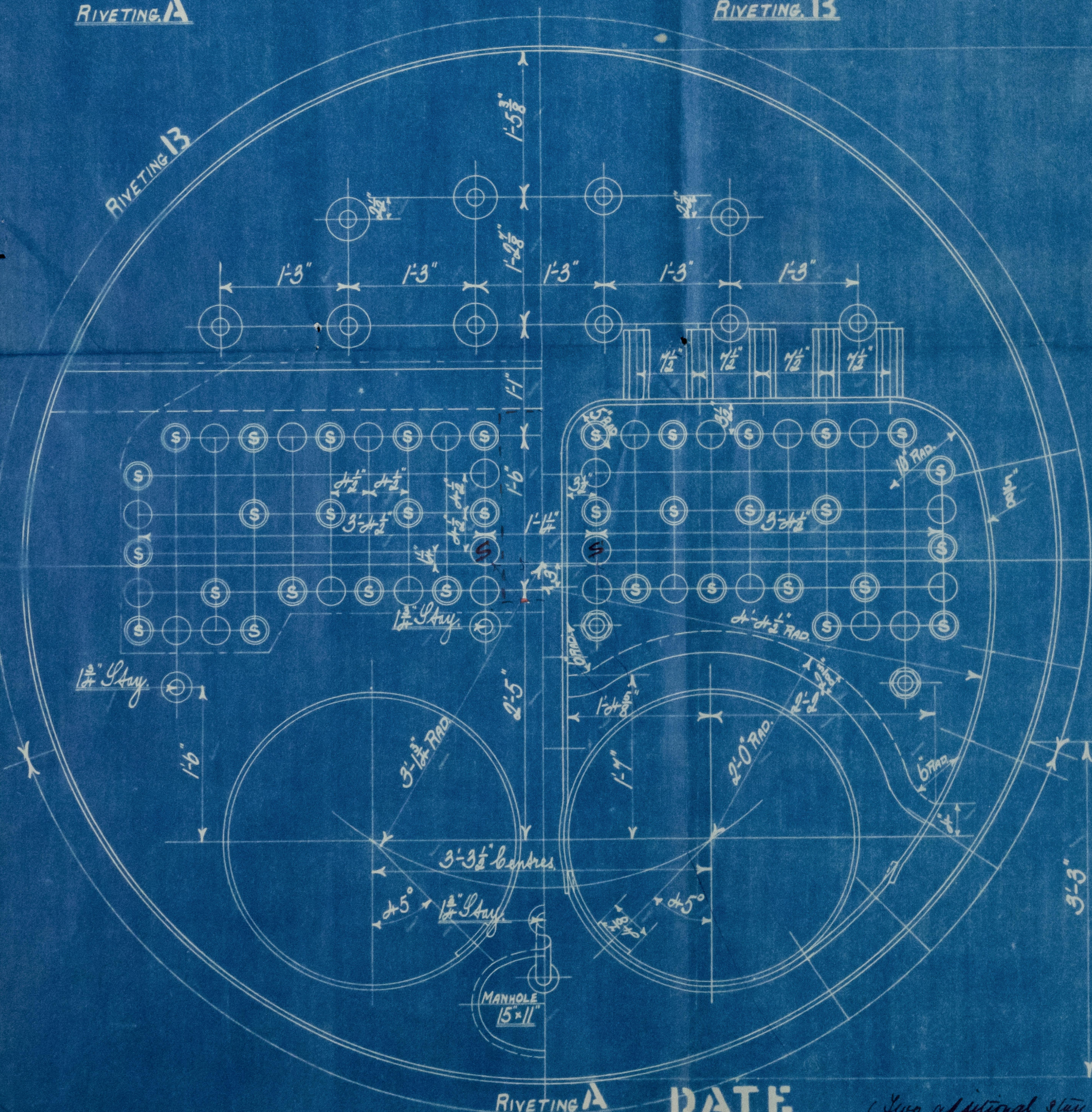
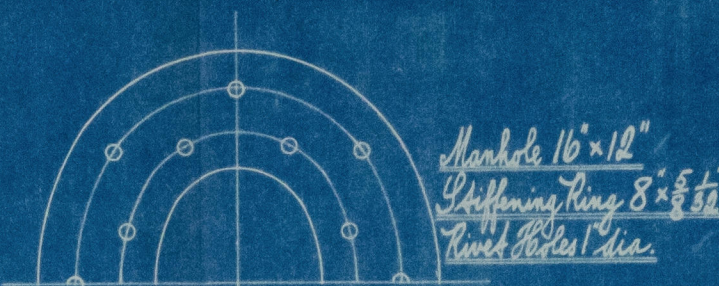
Combustion Chambers Circumferential & Longitudinal Seams, Furnaces Single Riveted  $\frac{5}{8}$ " Rivet Holes 2" Pitch &  $\frac{5}{8}$ " Lap.

For Furnace Fronts see Standard Drawing N<sup>8</sup>

STAYS			
N° OF THROG		EFF ARE.	
DIA	PER INCH	DIA	EFF ARE.
1 1/8"	9	1.23	1.19
1 1/8"	9	1.28	1.73
1 3/4"	9	1.60	2.03
2"	6	1.788	2.5



Gray Tubes 1/2" thick screwed 10 threads per inch. Eff Area 1.743  $\square$ "



N<sup>o</sup> 684-ENG N<sup>o</sup> 617 Intended for Messrs J. L. Thompson & Sons Ltd P.P. N<sup>o</sup> 430

Two additional stay tubes  
fitted ~~to~~ doubling fitted  
~~at front tube plate between seats.~~

The Stay tubes will be fitted

M.H.



Donkey Boats  
for  
J. Dickinson & Sons Ltd

No. 684.

J. L. Thompson & Sons

2/5 No. 420,

N. P. = 100 lbs



2/5 "Nordamerika"

Sld F. E. No. 22220



Lloyd's Register  
Foundation

W1315-0089