

EQUIPMENT NUMBER	
(B+D) x L	(57'2 1/2") x 370' = 29,600.00
FORECASTLE	46.50' x 7.50' x 1/4" = 261.56
BRIDGE	19.25' x 7.50' x 1/4" = 108.28
POOP	96.25' x 7.50' x 1/4" = 541.41
DK HOUSE ON BRIDGE DK	19.25' x 8.00' x 1/2" = 77.00
" " POOP	60.50' x 8.00' x 1/2" = 242.00
" " UP BRIDGE	19.25' x 8.00' x 1/2" = 77.00
EQUIPMENT NUMBER	30,902.25

EQUIPMENTS	
3-BOWER ANCHORS (STOCKLESS TYPE) 5.974 ^{lbs} EACH	
1-STREAM ANCHOR (EX STOCK) 1.680 ^{lbs}	
270 FATHOMS 2 1/8" DIA. STUD CHAIN CABLES	
1-90 FATHOMS 4 1/8" CIR. STEAM STEEL WIRE	
1-120 FATHOMS 4 1/8" CIR. STEEL WIRE	
2-90 FATHOMS 7" CIR. MANILA ROPE	
2-90 FATHOMS 7" CIR. MANILA ROPE	

DECK	STRINGER PLATE	STRINGER ANGLE	RIV. AT BUTTS
UPPER DECK	SEE DECK PLAN	6" x 6" x 81" A.	QUINTUPLE
	3/4" x 40" AT PARE ENDS	3/4" x 3/2" x 40" A. AT PARE ENDS	
	3/4" x 36" AT AFT ENDS	3/4" x 3/2" x 36" A. AT AFT ENDS	
BRIDGE DK	3/4" x 40"	3/4" x 3/2" x 40" A.	DOUBLE
FILE DK	3/4" x 36"	3/4" x 3/2" x 36" A.	"
POOP DK	3/4" x 36"	3/4" x 3/2" x 36" A.	"

ITEMS	RULE FRAME SPACING	33" FRAME SPACING	RIV. AT BUTTS
ENTLED GIBBER	40" x 50"	50"	50"
SIDE GIBBER (ONE ON EACH SIDE)	38" x 38"	48"	48"
MARGIN PLATE	476" x 476"	576"	576"
TR. SIDE BRACKET	445" x 445"	545"	545"
TR. SIDE L. STRAKE	445" x 445"	545"	545"
" " OTHER	445" x 445"	545"	545"
SOLID & BRACKET PL.	476" x 476"	576"	576"

SOLID FLOORS AT EVERY 3RD. FRAME EXCEPT IN ENGINE ROOM, UNDER BOWLER BEARERS, UNDER BULKHEADS AND FORWARD 1/2 L. & WHERE AT EVERY FRAME PARTIAL SOLID FLOORS UNDER THRUST.

ITEMS	1/2 L. & ENDS	ENG. BOWLER RYS. ETC.
CR. GIRDER TOP ANG.	3" x 3" x 50" A.	3" x 3" x 48" A.
" " BOTTOM	4" x 4" x 50" A.	4" x 4" x 48" A.
" " VERTICAL	3" x 3" x 50" A.	3" x 3" x 48" A.
SIDE GIRDER TOP ANG.	3" x 3" x 50" A.	3" x 3" x 48" A.
" " BOTTOM	4" x 4" x 50" A.	4" x 4" x 48" A.
" " VERTICAL	3" x 3" x 50" A.	3" x 3" x 48" A.
MARGIN ANGLE	3" x 3" x 50" A.	3" x 3" x 48" A.
FR. ON SOLID FLOOR	3" x 3" x 50" A.	3" x 3" x 48" A.
REV. FR. ON	3" x 3" x 50" A.	3" x 3" x 48" A.

ITEMS	RULE FRAME SPACING	33" FRAME SPACING	RIV. AT BUTTS	NOTE
STRAKE A.B.C.D.	575"	46"	63"	TREBLE
" E.F.G.	575"	44"	63"	"
" H.	70" x 81"	44"	70" x 81"	QUADRUPE
BRUSSING PLATE	66"	40"	40"	QUADRUPE
BRIDGE SIDE PLATE	40"	40"	40"	"
FILE	40"	40"	40"	"
POOP	37"	37"	37"	"

STRAKES A.B.C. TO BE MAINTAINED MIDSHIP THICKNESS - 58" TO RULE POSITION OF COLLISION BULKHEAD (FR. 170.122).

NOS 1124-5. MIDSHIP SECTION. SCALE 1/2" IN. TO 1 FT.

TO CLASS "TEISHIMSHO" 1ST CLASS HEAVY DECKER
& LLOYD'S +100 A.L.

PRINCIPAL DIMENSIONS	
LENGTH BETWEEN P.P.	370'-0"
BREADTH MOULDED	51'-0"
DEPTH MOULDED (TO UP. DECK)	29'-0"

SCANTLING NUMERALS	
L	370.00
B	29.00
L x D	10,730.00
B	51.00
D	29.00
B x D	80.00
L	370.00
L (B+D)	29600.00
40 TO UPPER DECK	12.76
40 (IN VIEW OF LARGER MARGIN BUTTS)	25.00
SUPERSTRUCTURE TO SHIP'S LENGTH	44.90

FORGING & CASTING	
STEM	9 1/2" x 2 1/2" FORGED OR ROLLED STEEL
PROPELLER POST	10 1/2" x 9" CAST STEEL
RUDDER POST	9" x 7 1/4" CAST STEEL

BULKHEAD PLATE	25"
RAIL	6" x 3" x 16" B.A.
STAY	6" x 3" x 16" A.
SPACED	6" x 1" APART & 5'-0" AT ENDS OF BRIDGE

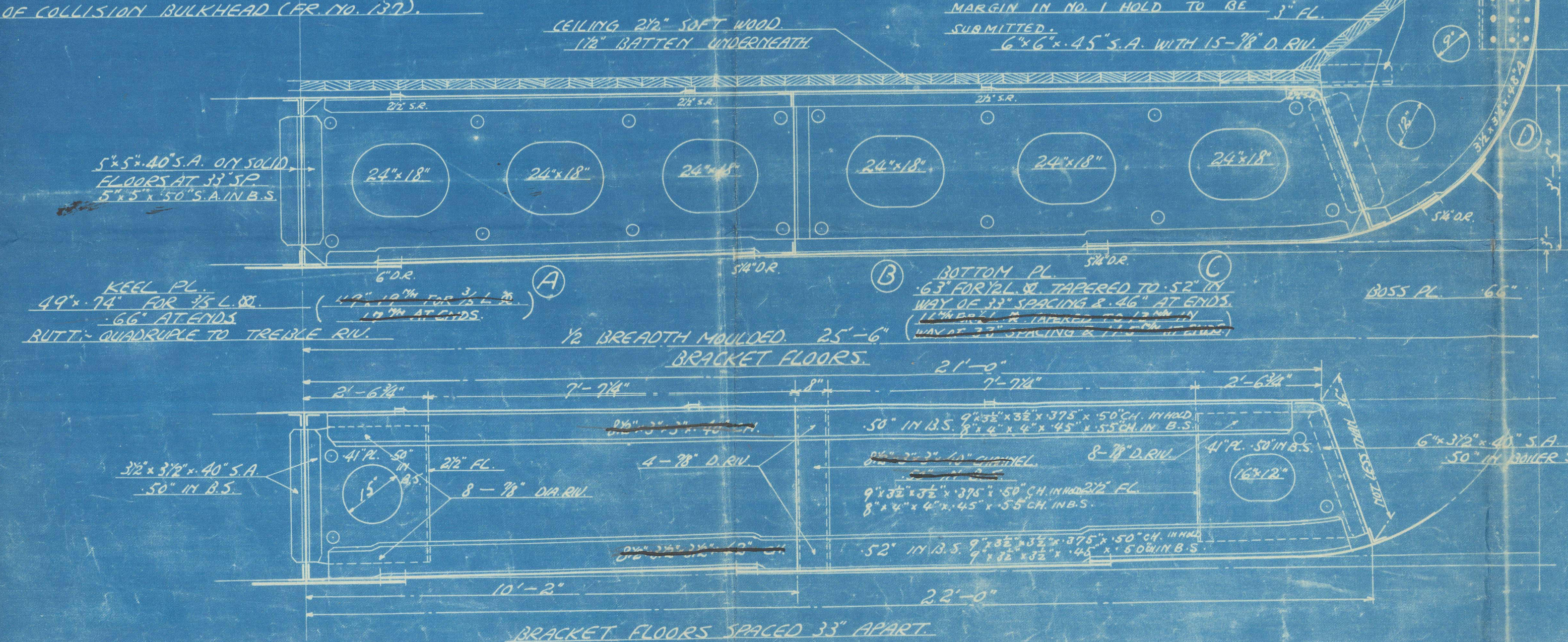
SHEER STRAKE 70" x 81" AT ENDS TO BE STRENGTHENED AT BRIDGE AND POOP ENDS

NOS 1-5 HATCHES	
WEL. PLATES SPACED	5'-0" x 1/2" A.
WEL. FLORES	1/2" x 3/4" A.
4 ANGLES	6" x 3/2" x 50" A.
HATCH COVERS	2 1/2" THICK

DECK PLATING & BEAMS AS PER DECK PLAN.

ITEMS	24" IN PEAKS
27" FORWARD 1/2 L. & TO COLLISION BND	
33" ELSEWHERE	
HOLD FRAMES REV.	FR. 25" x 3/4" x 50" A. (8" x 3/2" x 43" A.)
DEPTH 14.2" WHERE 33" SPACED	FR. 25" x 3/4" x 50" A. (8" x 3/2" x 43" A.)
DEPTH 14.2" WHERE 27" SPACED	FR. 25" x 3/4" x 50" A. (8" x 3/2" x 43" A.)
PEAK FRAMES	7 1/2" x 3" x 34" B.A.
BRIDGE DECK SIDE FRAMES	6" x 3" x 32" B.A.
AT EVERY FRAME	
FILE DECK SIDE FRAMES	7" x 3" x 34" B.A.
AT ALT. FRAMES	
INTERMEDIATE FRAMES	5 1/2" x 3" x 34" A.
BRACKETED AT FILE AND UPPER DECK	
POOP DECK SIDE FRAMES (ALT. FRAMES)	7 1/2" x 3" x 34" B.A.
& 7 1/2" x 3" x 36" B.A. AT 24" & 33" SPACING RESPECTIVELY	
INTERMEDIATE FRAMES	5" x 3" x 34" A. & 5 1/2" x 3" x 34" A.
AT 24" & 33" SPACING RESPECTIVELY	
ALL FRAMES SCARPHED OR BRACKETED	

GUSSET ANGLE 6" x 6" x 48" A. ON EVERY FRAME. 6" x 7" D. RIV. DETAIL OF TANK SIDE BRACKETS & MARGIN IN NO. 1 HOLD TO BE 3" FL. SUBMITTED. 6" x 6" x 45" S.A. WITH 15-78" D. RIV.





Approved by Lloyd's
Feb. 23, 1928
J. J. Cor. (Signed)

S.S. KANSEISHI MARU

MIDSHIP Section (as built)

Kobe Report 6498



株式會社大阪鐵工所				
造船部設計課				
部長	課長	調査	製圖	寫上
				
關係課	圖面番工區	事務分	3	

W1314-0185