

# No 2 BOILER.

FOR NO 1 BOILER SEE SEPARATE DRG.

HEATING SURFACE	SQ. FT.
180 TUBES 8" O.D. OVER TUBE PLATES 2 1/2" EXT. DIA.	943
2 FURNACES 37" INSIDE DIA.	104
COMBUSTION CHAMBER BACKS	40
BACK TUBE PLATES	25
WRAPPER	78

TOTAL H.S. EXCLUDING CR. C.C. & TUBES = 1190  
H.S. IN CR. C.C. & TUBES ONLY = 1205

## BOILER OIL FIRED. WHITE SYSTEM.

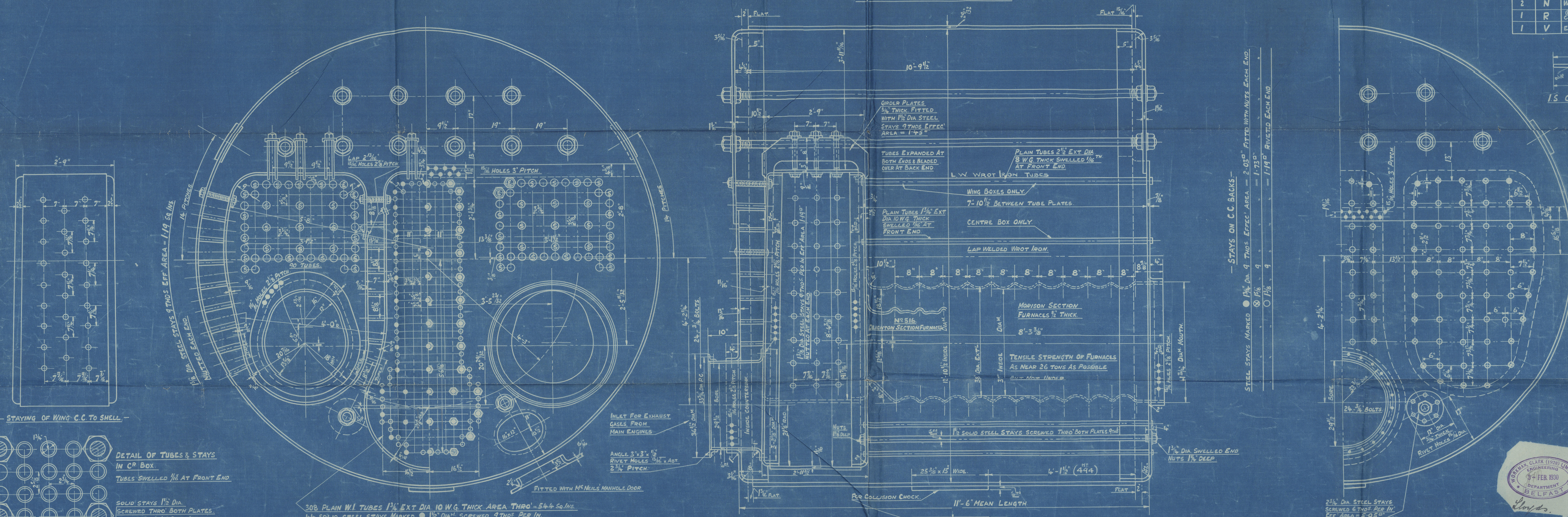
STEAM SPACE FROM 9" ABOVE C.C. TOP = 285 CUBIC FT.  
WEIGHT OF COLD WATER 9" ABOVE C.C. TOP = 18 1/2 TONS.  
DRAUGHT AREA THRO' BOILER TUBES = 4.426 SQ. FT.  
(EXCLUDING CENTRE BOX)

## STEAM SPACE STAYS.

STEEL STAYS 2 3/4" DIA. 6 THDS EFF. AREA = 5.05"  
TENSILE STRENGTH OF STAY BARS 28 TO 32 TONS PER"  
DEPTH OF OUTSIDE NUTS 2 3/4"  
INSIDE 1 1/2"

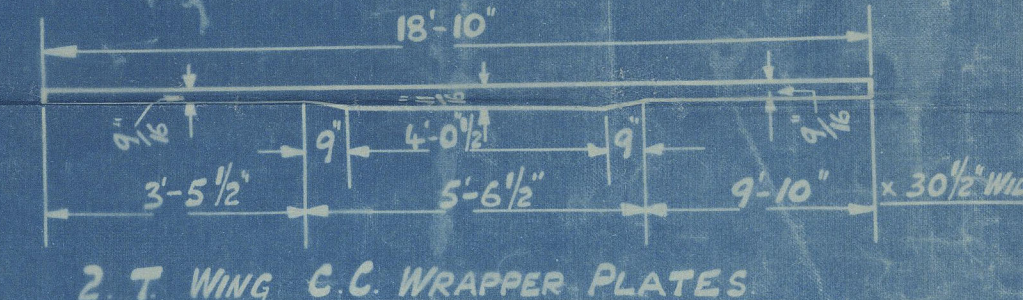
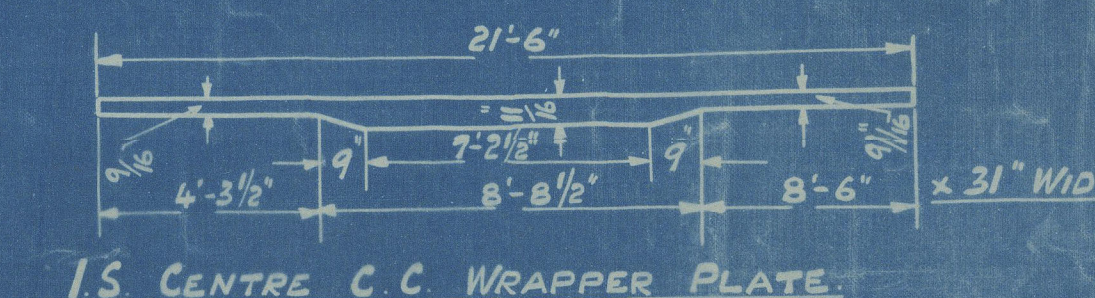
FOR ALL OTHER DETAILS SEE NO 1 BOILER DRAWING

EDGES OF ALL PLATES TO BE BEVELLED.



## PLATE LIST

NO OFF	MARK	DESCRIPTION	LENGTH	WIDTH	THICK
1	A	SHELL TOP	13'-3 1/8"	129 3/4"	2 1/2"
1	B	" BOTTOM	27'-6 1/8"	129 3/4"	2 1/2"
2	C	BUTT STRAPS OUTER	10'-9 1/2"	14 1/2"	1 1/2"
2	D	" INNER	10'-2"	14 1/2"	1 1/2"
1	E	GIRDERS	13'-6"	35"	3/4"
1	F	TOP FRONT	13'-4"	1 1/2"	
1	G	FURNACE FRONT	10'-9 1/2"	7 1/8"	
1	H	TOP BACK	14'-1"	1 1/2"	
1	J	BOTTOM BACK	10'-2"	13 1/8"	
1	K	CR BACK TUBE PLATE	9'-1 1/2"	51 1/4"	3/4"
2	L	WING	7'-2 1/2"	55 3/8"	3/4"
1	M	CR C.C. BACK	9'-1 1/2"	51 1/4"	1 1/2"
2	N	WING C.C.	7'-3 3/8"	55 3/8"	1 1/2"
1	R	(CUTS 2) COLLISION CHOCKS	4'-3 1/2"	15"	1 1/2"
1	V	EXHAUST INLET	10'-1"	22 1/2"	9 1/8"



## STAY BAR LIST

NO OFF	DESCRIPTION	LENGTH	DIA.
10	STEAM SPACE	12'-1 1/2"	2 3/4"
2	WATER	12'-2 3/8"	2 3/4"
44	CR BOX STAYS	8'-6"	1 1/2"
1	SCREWED	18'-0"	1 1/2"
5		18'-0"	1 1/2"
3		18'-0"	1 1/2"
14		18'-0"	1 1/2"

## COST NO 32

WORKMAN CLARK & CO LTD  
ENGINE DEPT BELFAST  
DRAWING NO 27251  
DATE 2/5/37  
CHECKED BY  
TRACING CHECKED BY

TO PASS LLOYD'S SURVEY

NO 516

DONKEY BOILER

2 SHEETS SCALE 1" = 1'-0" SHEET NO 2

## ONE BOILER THUS.

WORKING PRESS = 150 LBS/SQ IN  
HYDRAULIC TEST PRESS = 275

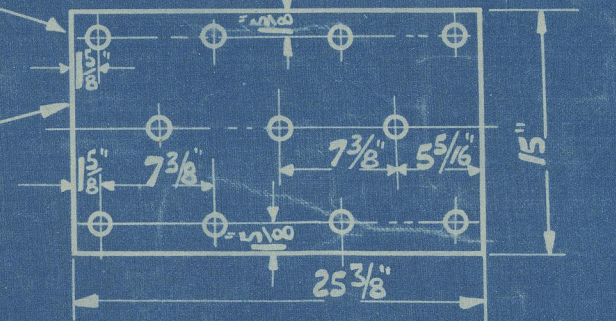
ALL MATERIAL STEEL EXCEPTING TUBES WHICH ARE IRON.

NO 494, NO 516.

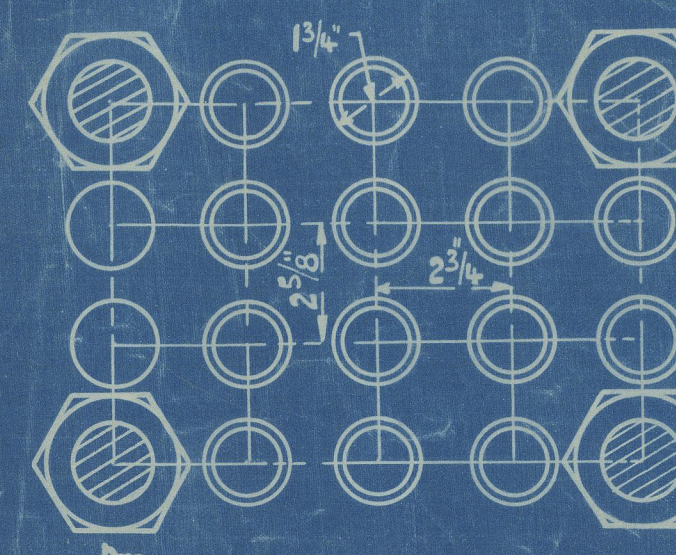
DATE 30-5-37  
OWNERS APPROVAL 6-5-37  
10-9-37

308 PLAIN W.I. TUBES 1 1/2" EXT DIA 10 W.G. THICK AREA THRO' = 544 SQ. IN.  
1 1/2" SOLID STEEL STAYS MARKED 1 1/2" DIA. SCREWED 9 THDS PER IN.  
EFFEC. AREA = 1.45"  
SCREWED THRO' BOTH PLATES & SWELLED.  
AT FRONT END TO 1 3/4" DIA. & FITTED WITH NUTS.

HYDRAULICALLY RIVETED ON TO SHELL. 11 RIVET HOLES 1 1/2" DIA. COUNTERSUNK ON OUTSIDE.

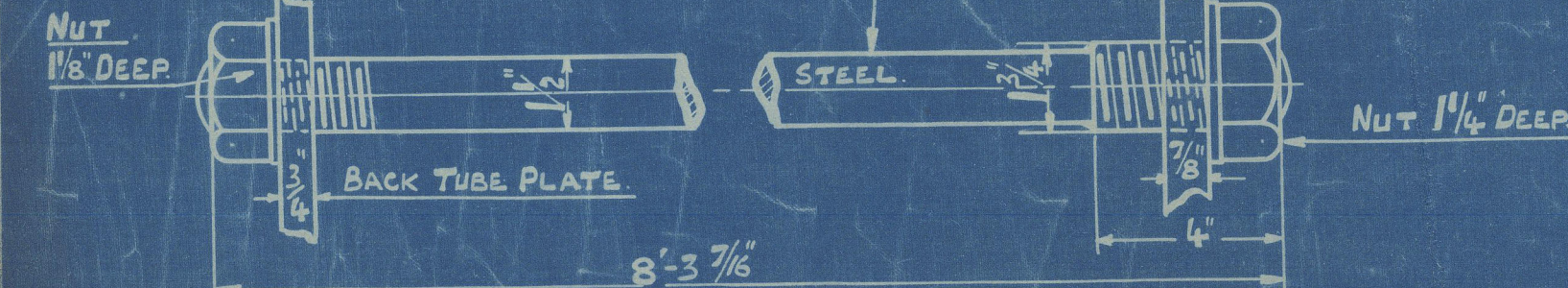


## STAYING OF WING C.C. TO SHELL.



DETAIL OF TUBES & STAYS IN CR BOX  
TUBES SWELLED 1/2" AT FRONT END

SOLID STAYS 1 1/2" DIA.  
SCREWED THRO' BOTH PLATES.  
9 THDS EFF. 1.45 SQ. IN.





Boules

Corabank

→M.S."CORABANK"←

REMAIN



© 2021

Lloyd's Register

W F 12 01 95  
Foundation