

STEEL MAIN BOILER FOR NOS 917

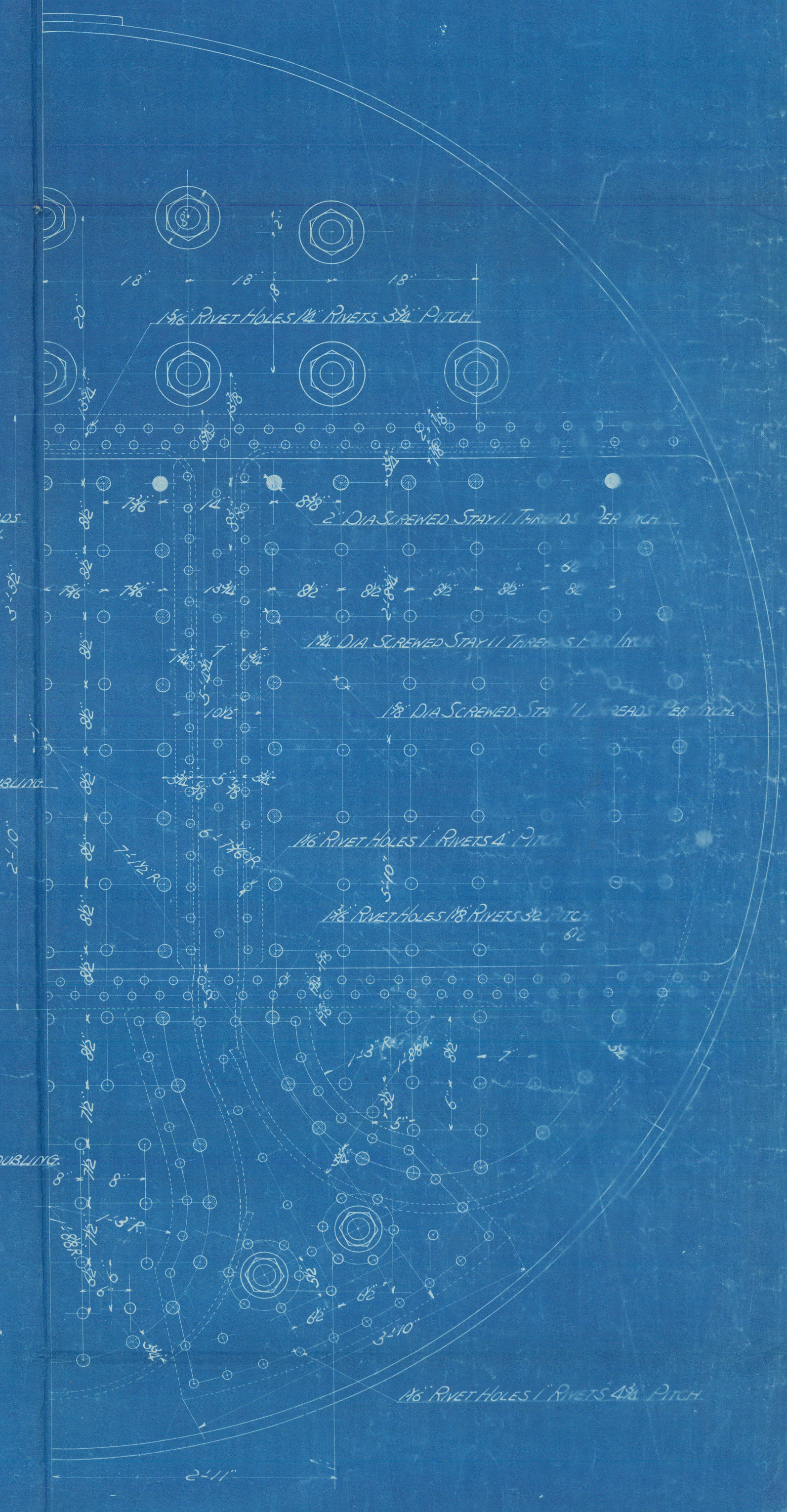
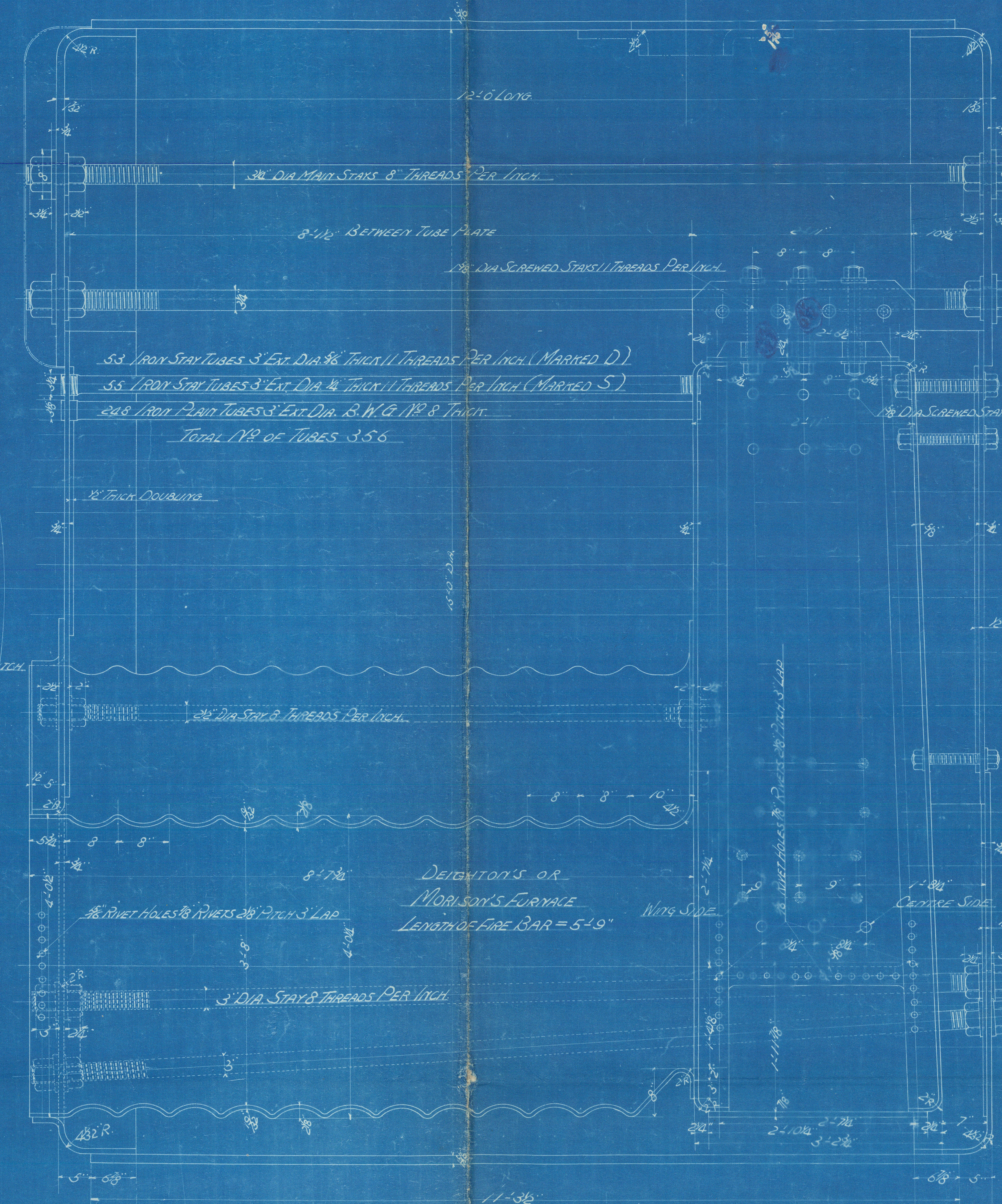
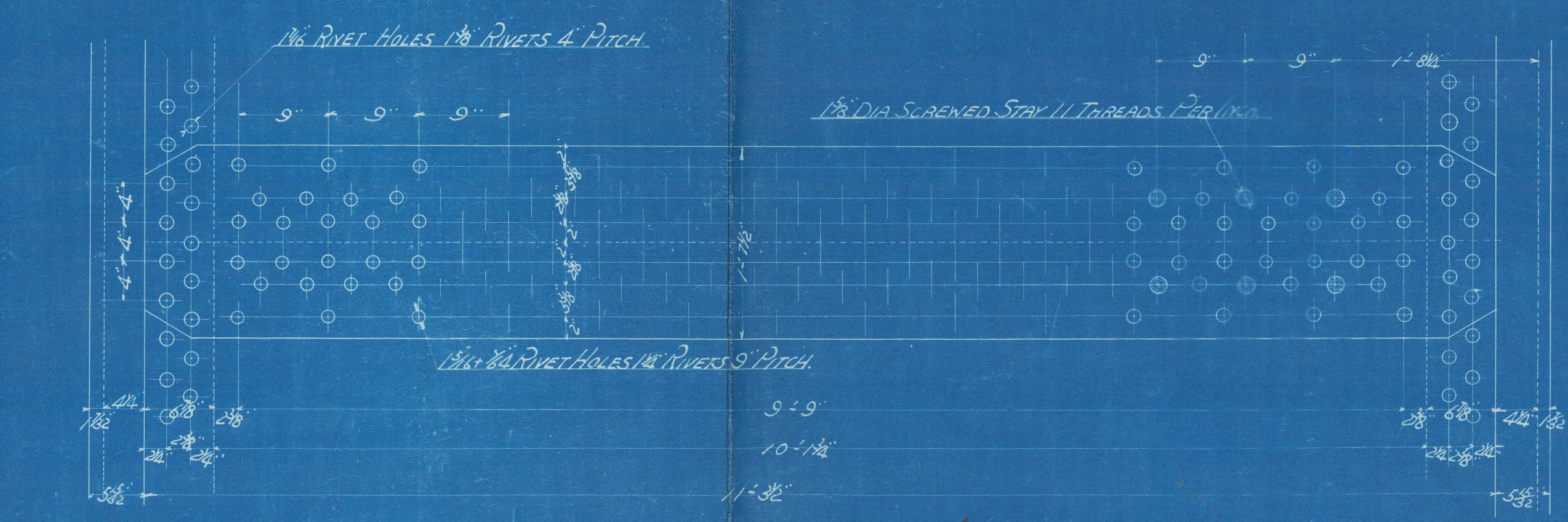
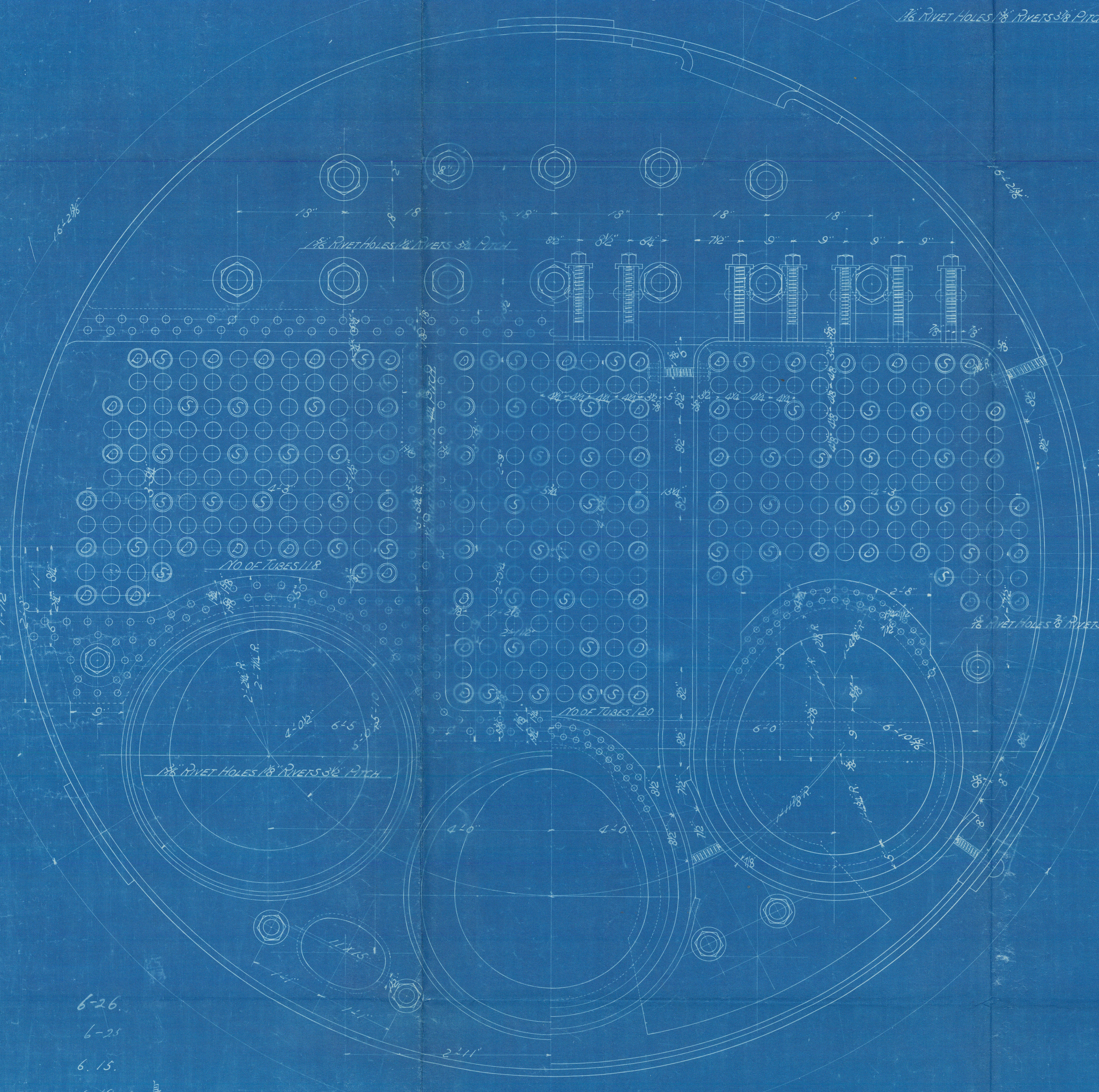
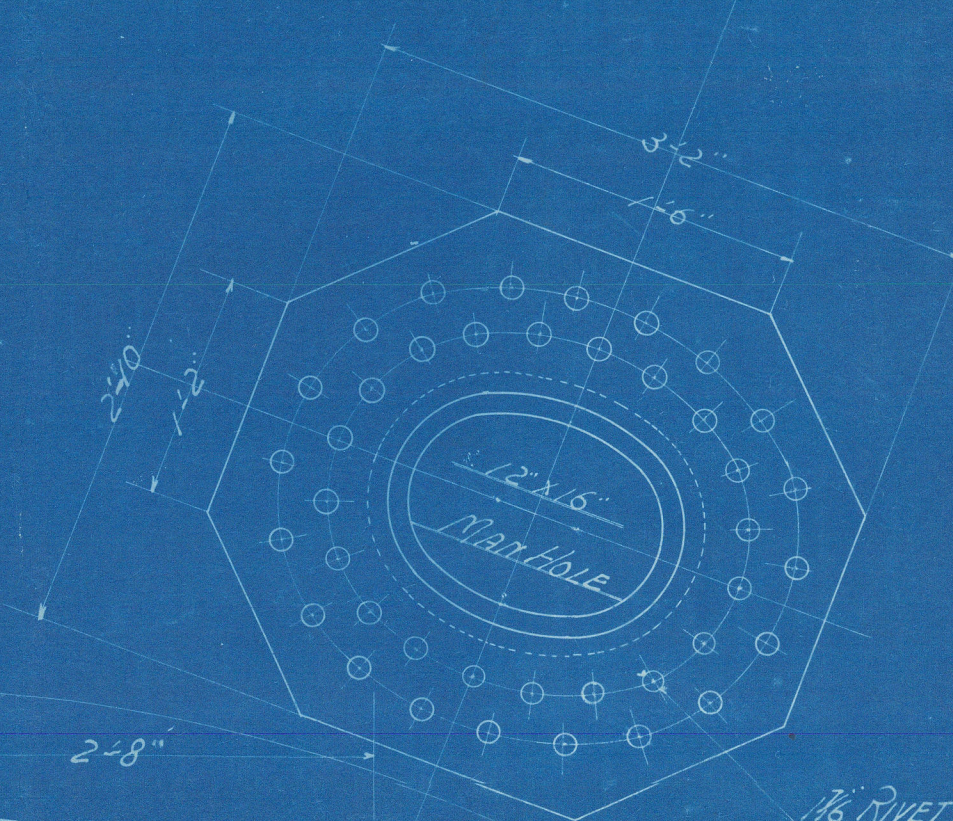
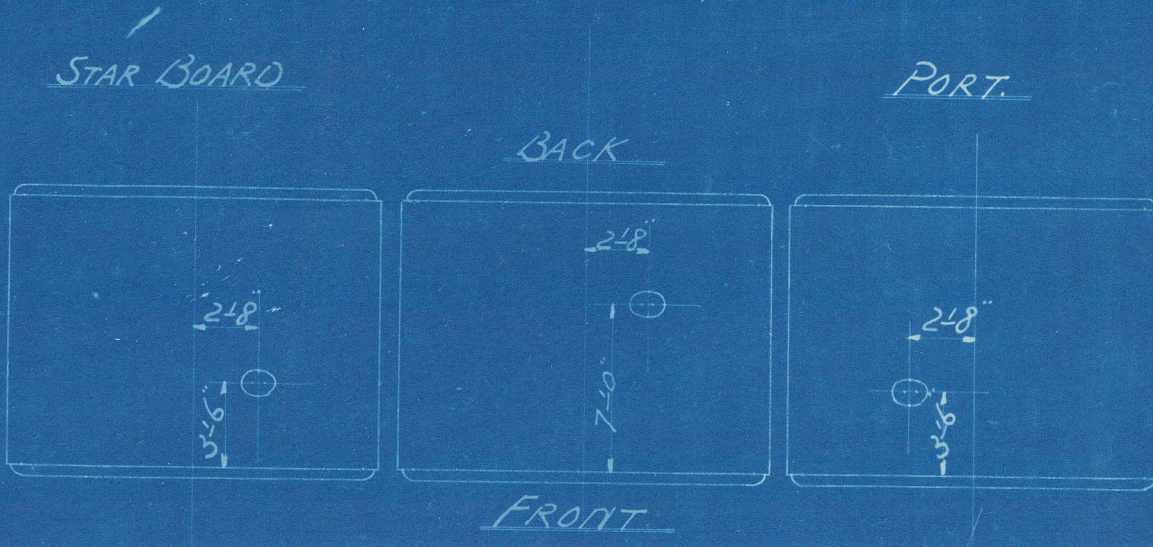
W.P. = 150 LBS./sq. in.

SCALE 1 INCH TO ONE FOOT

THREE OFF (FOR ONE VESSEL)

MATERIAL	TENSILE BREAKING STRENGTH, TONS	NET LESS TAIL, LBS.
SHELL AND BUTT STRAP	26,79	60,000
GIRDER PLATE	26,00	58,240
END PLATE, COMB. CHAMBER	26,00	58,240
SOLID STAY BAR	28,00	62,720
SCREWED STAY BAR	26,00	58,240
RIVET BAR	26,00	58,240

PARTICULARS (ONE BOILER)	
HEATING SURFACE OF TUBES	2271.75
COMB. CHAMBER	271.05
FURNACE	156.65
TOTAL HEATING SURFACE	2700.25
GRATE AREA	63.25
Net	426



6-26.
6-25.
6-15.
6-19.

S/S "Mouri Maru"
Kobe 3557.

OSAKA IRON WORKS LTD.	
BUILDERS NO.	917
Steel Main Boiler.	
This boiler is the same as 957 WB	
DRAWING NO.	
DATE.	9-9-6



© 2021

Lloyd's Register
Foundation