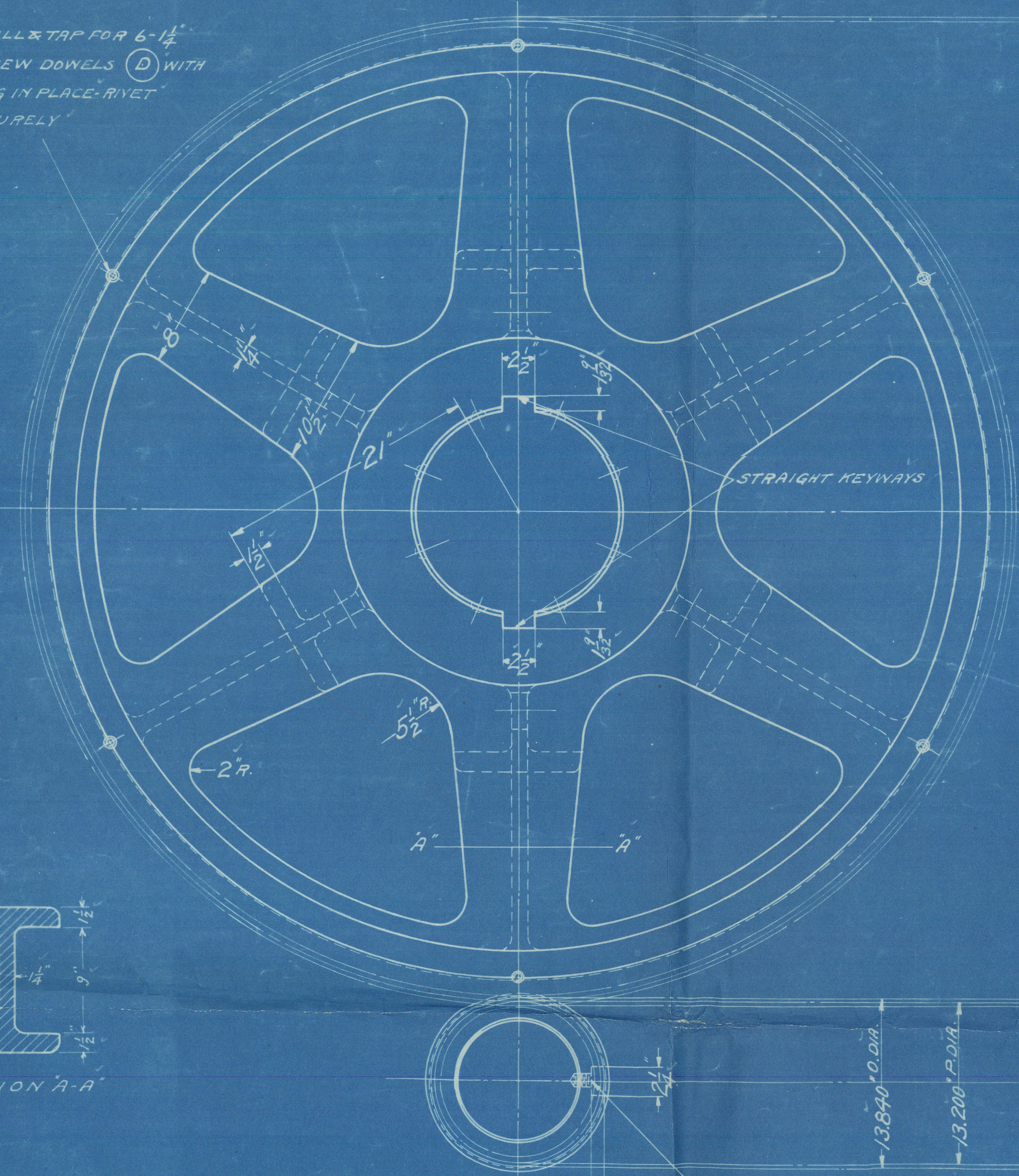
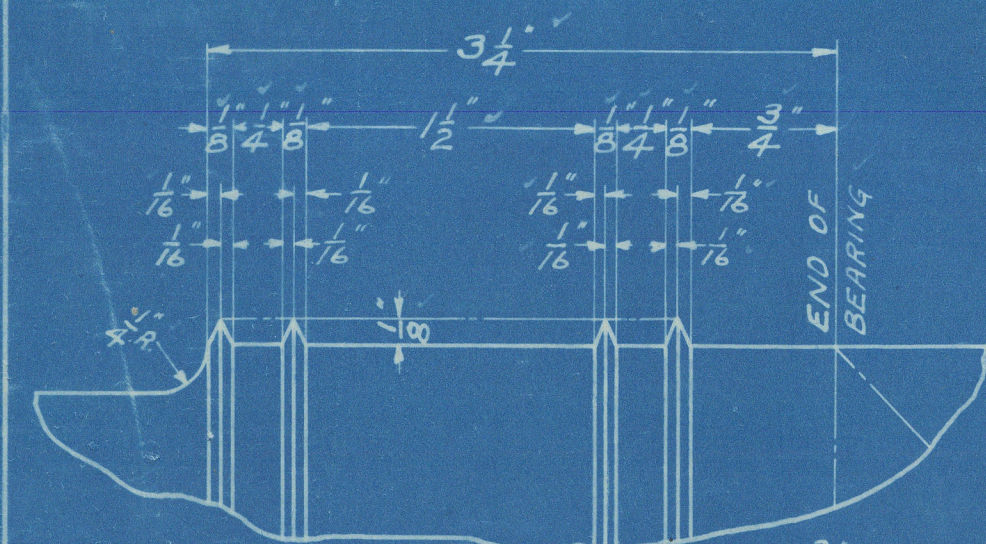


DETAIL OF TOOTH BEVEL ON EACH SIDE OF GEAR & PINION

DRILL & TAP FOR 6-1/4" SCREW DOWELS (D) WITH RING IN PLACE - RIVET SECURELY



SECTION A-A



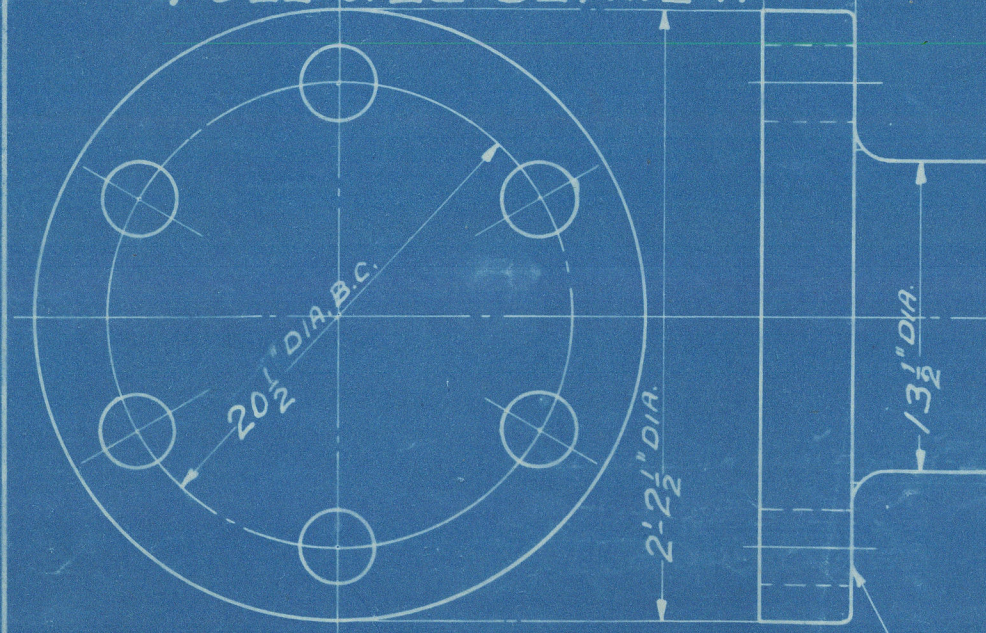
HERRINGBONE PINION

33T. 2 1/2 P. 28F. - 2 REQ'D

O.H. FORGED STEEL - .45-.55 CARBON.
FIN. ALL OVER - JOURNALS GROUND & POLISHED.

DRILL 8-3/8\"/>

FULL SIZE DETAIL A



10 REQ'D WITH FLANGE END THUS FOR U.S. SHIPPING BOARD CONT. 24-572

DRILL 6-3/8\"/>

24573	4
24572	10
CONT. NO.	REQ'D

4 REQ'D WITH FLANGE END THUS FOR J. COUGHLAN & SONS CONT. 24-573

FIN. ALL OVER
JOURNALS GROUND & POLISHED

MAIN GEAR SHAFT - 1 REQ'D

O.H. FORGED STEEL

SPECIFICATIONS: MATERIAL TO CONFORM IN ALL RESPECTS TO TESTS AND REQUIREMENTS AS CALLED FOR BY LLOYDS AND AMERICAN BUREAU OF SHIPPING RULES FOR MAIN PROPELLER SHAFTS.

FOR U.S. SHIPPING BOARD, EMERGENCY FLEET CORP. CONT. 24572. RUN KEY WAY CLEAR THROUGH TO DEPTH OF 8\"/>

GEAR RING

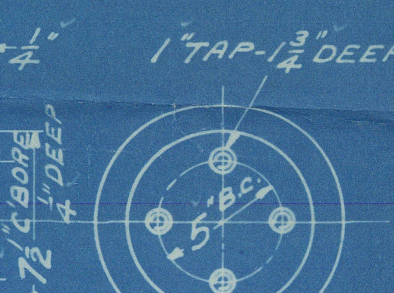
19TT. 2 1/2 P. 14F.

O.H. ROLLED STEEL - .30-.35 CARBON
2 REQ'D - FIN. ALL OVER.

GEAR CENTER

1 REQ'D - CAST IRON
PATT. NO. 10181

DRILL & TAP FOR 8-1/4\"/>



NUT

1 REQ'D - FORGED STEEL

FINISH ALL OVER

DRIVE KEYS FROM OPPOSITE SIDES.

1/2\"/>

1/2\"/>

1/2\"/>

1/2\"/>

1/2\"/>

1/2\"/>

1/2\"/>

1/2\"/>

1/2\"/>

1/2\"/>

1/2\"/>

1/2\"/>

1/2\"/>

1/2\"/>

1/2\"/>

1/2\"/>

1/2\"/>

1/2\"/>

1/2\"/>

1/2\"/>

1/2\"/>

1/2\"/>

1/2\"/>

1/2\"/>

1/2\"/>

1/2\"/>

1/2\"/>

1/2\"/>

1/2\"/>

1/2\"/>

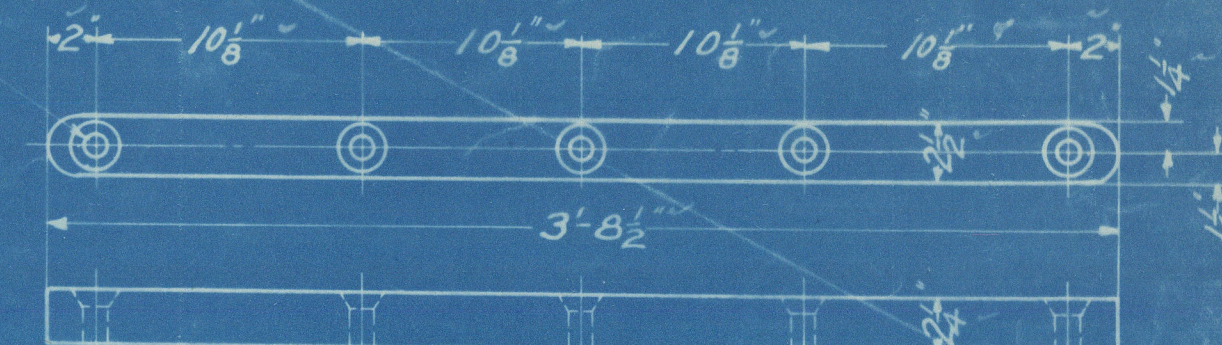
1/2\"/>

1/2\"/>

1/2\"/>

1/2\"/>

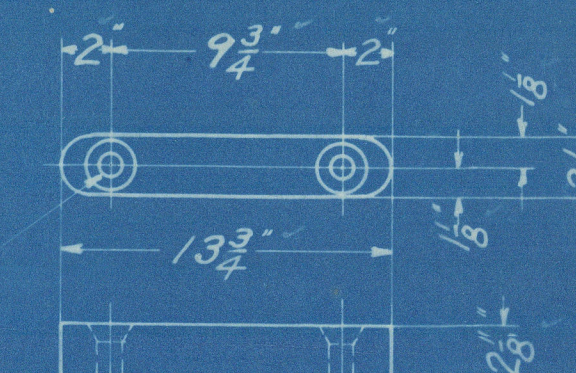
DRILL & CSK. FOR 1\"/>



FEATHER KEY

2 REQ'D - STEEL - FOR CONT. 24573

(E)



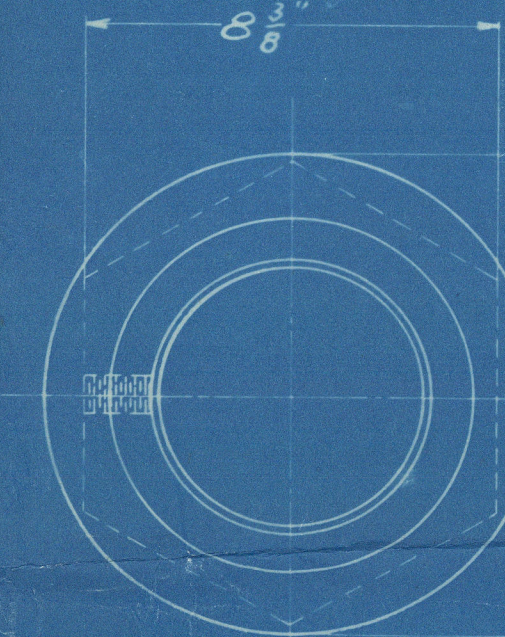
FEATHER KEY

2 REQ'D - STEEL

(F)

(L) KEY - 4 REQ'D - STEEL - FOR CONT. 24572

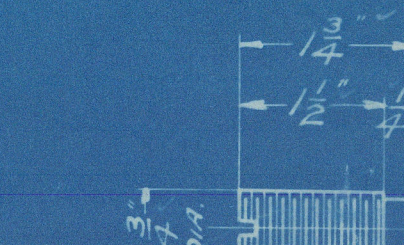
DRILL & TAP IN JOINT OF KEYS & GEAR FOR "D"



NUT

1 REQ'D - FORGED STEEL

FINISH ALL OVER



HEADLESS SET SCREW

1 REQ'D - STEEL

(K)

QTY	ST.	L	KEY	CONT. 24572
4	ST.	H	SET SCREW	
1	F.S.	J	NUT	
14	ST.	H	CSK. HD. SCREW	1" x 3 3/4"
1		G	FEATHER KEY	
2		F	FEATHER KEY	
2		E	FEATHER KEY	CONT. 24573
20		D	SCREW DOWEL	1/2" x 2 1/2"
1	F.S.	C	GEAR SHAFT	
2		B	HERRINGBONE PINION	
1	C.I.	10181	GEAR CENTER	
2	F.S.	A	GEAR RING	
NO. REQ'D	MAT'L	PATT.	DESCRIPTION	REMARKS

2800 H.P.
MARINE TURBINE REDUCTION.
MAIN GEARS & SHAFT.
3200 TO 90 R.P.M.

FAWCUS MACHINE CO.
ENGINEERS
PITTSBURGH, PA.

DRAWN BY [Signature] DATE 4-1-18
CHECKED BY [Signature]

6487

Atlanticos

Reduction
years

Imbure

Kimster name
ex
War Cavalry

Ver 739



© 2021

Lloyd's Register
Foundation

W1310-0153