

NO 8.

BUILDERS NO 471.

STEEL BOILER.

DIA. 10'-10" x 10'-6" LONG.

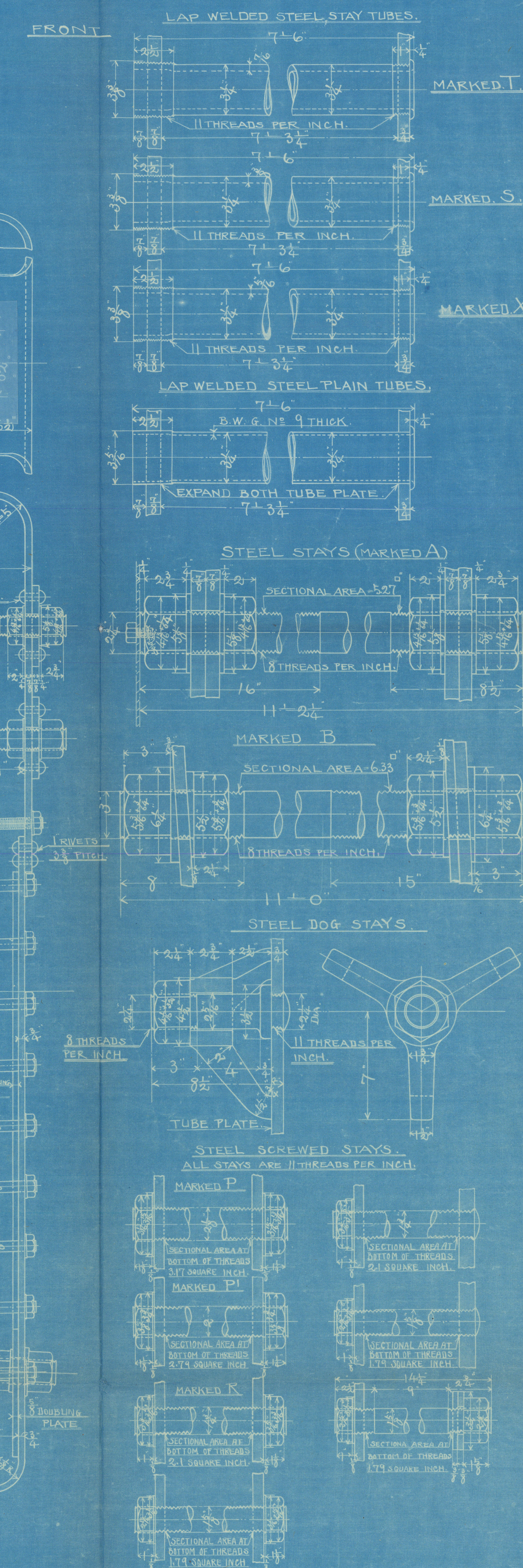
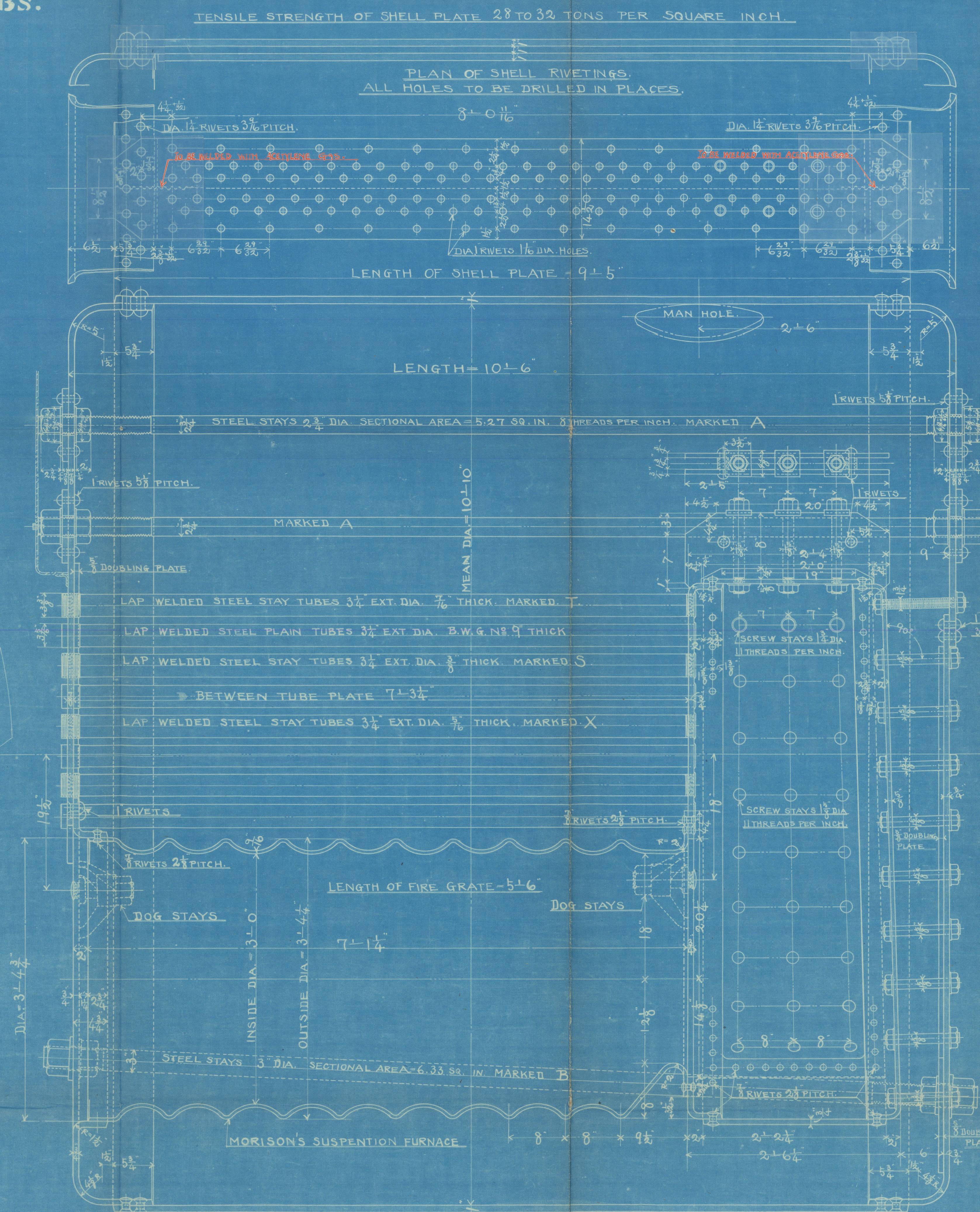
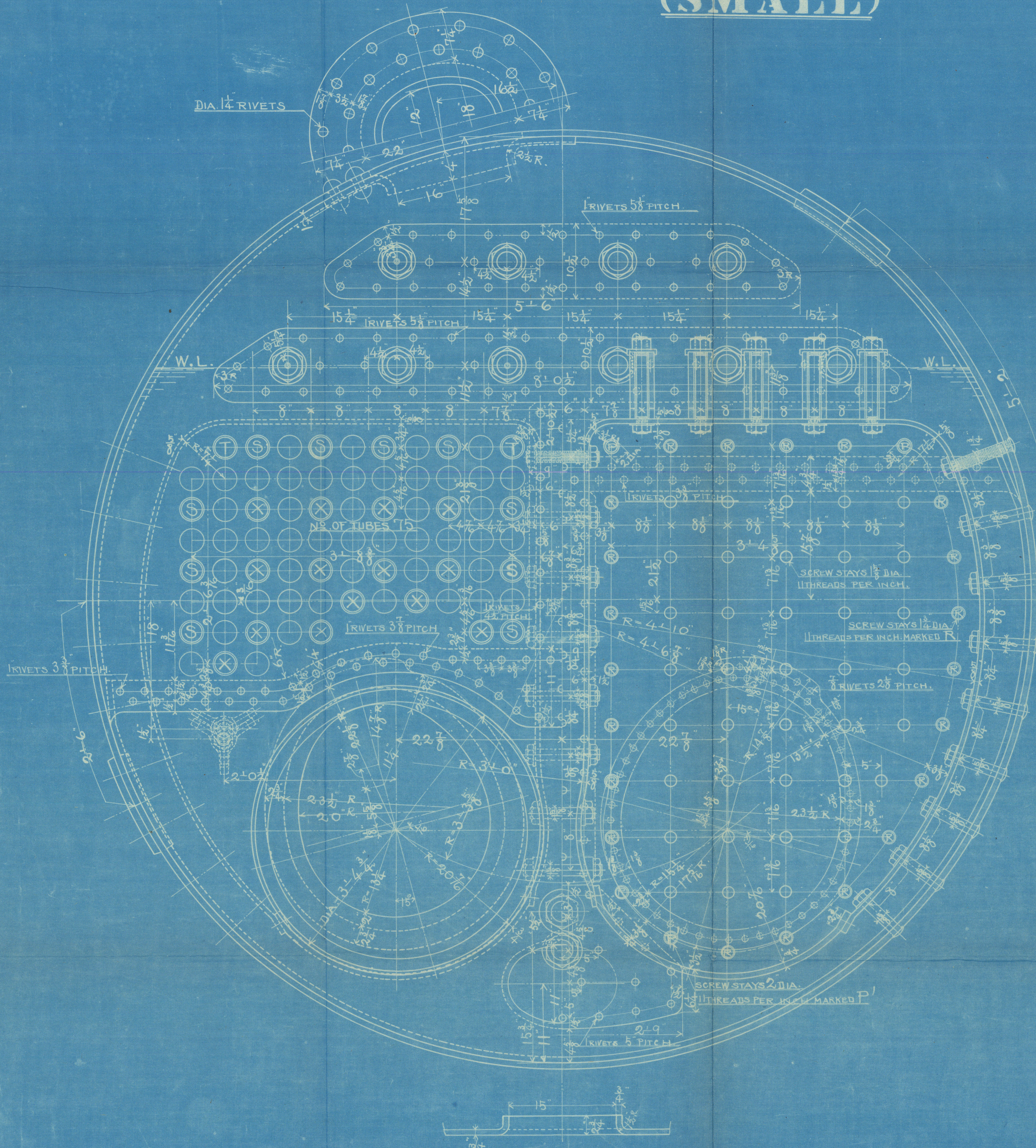
WORKING PRESSURE 200 LBS.

SCALE 1 1/2 IN. TO 1 FT.

THUS. (SMALL)

HEATING SURFACE	927.958	SQ. FT.
TUBES	74.532	
FLUES	102.187	
FIRE BOXES	27.802	
BACK TUBE PLATES	1132.479	
TOTAL	23.000	
RATIO H/G	34.318	
SECTIONAL AREA OF TUBES	6.541	SQ. IN.
SECTIONAL AREA OF TUBES	1	
GRATE AREA	5.045	

TUBES.
98 STEEL PLAIN TUBES 3/4" EXT. DIA. B.W.G. NO 9 THICK
4 STEEL STAY TUBES 3/4" EXT. DIA. 7/8" THICK MARKED T
20 STEEL STAY TUBES 3/4" EXT. DIA. 3/8" THICK MARKED S
28 STEEL STAY TUBES 3/4" EXT. DIA. 7/8" THICK MARKED X
150 AT ALL.



KAWASAKI DOCKYARD Co., LTD.

Builders No. 471.

S/S DENMARK MARU
Kobe RPT No 2715
Small boiler.

Drawing No.



© 2021

Lloyd's Register
Foundation

W1309-0292