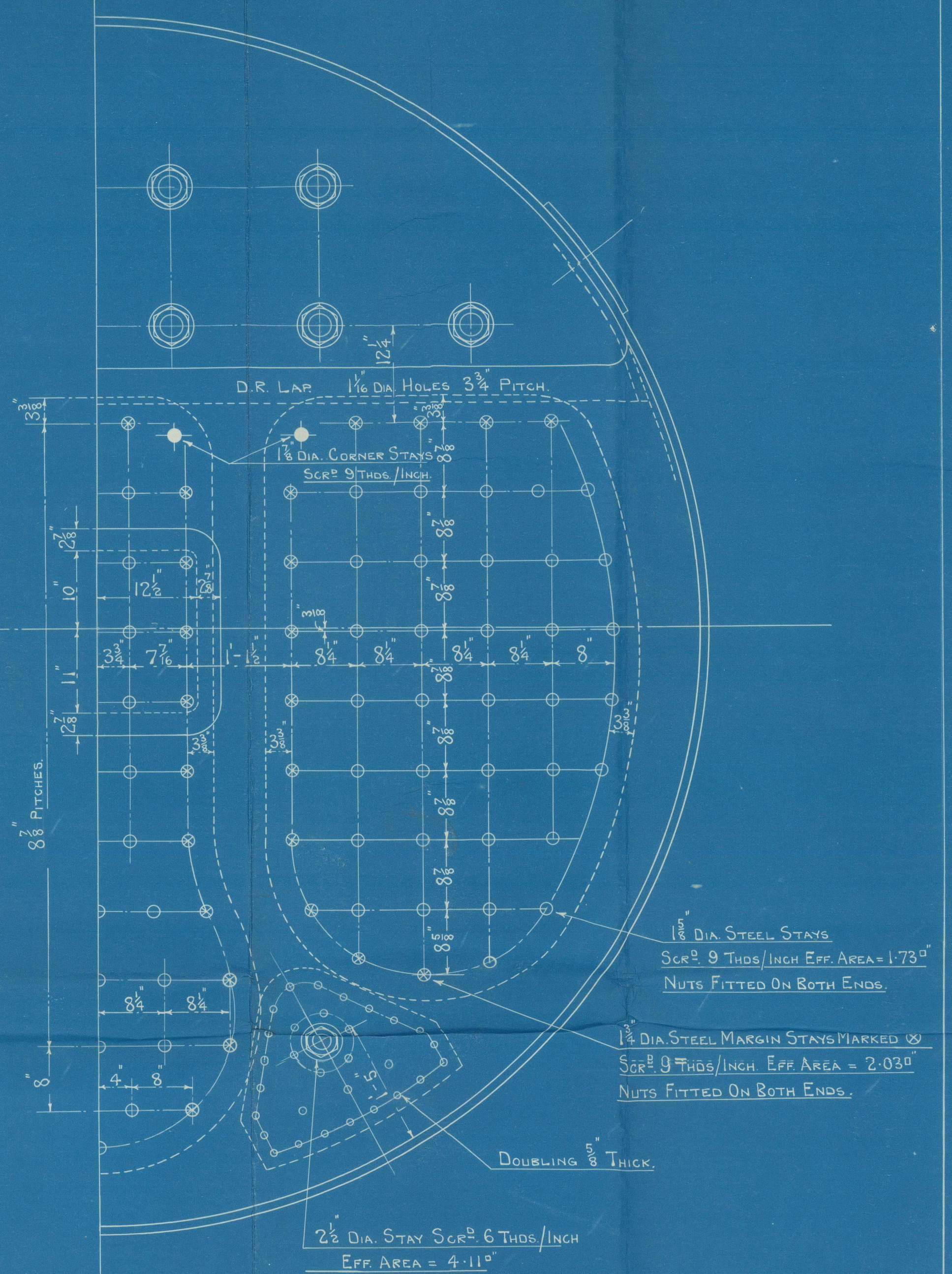
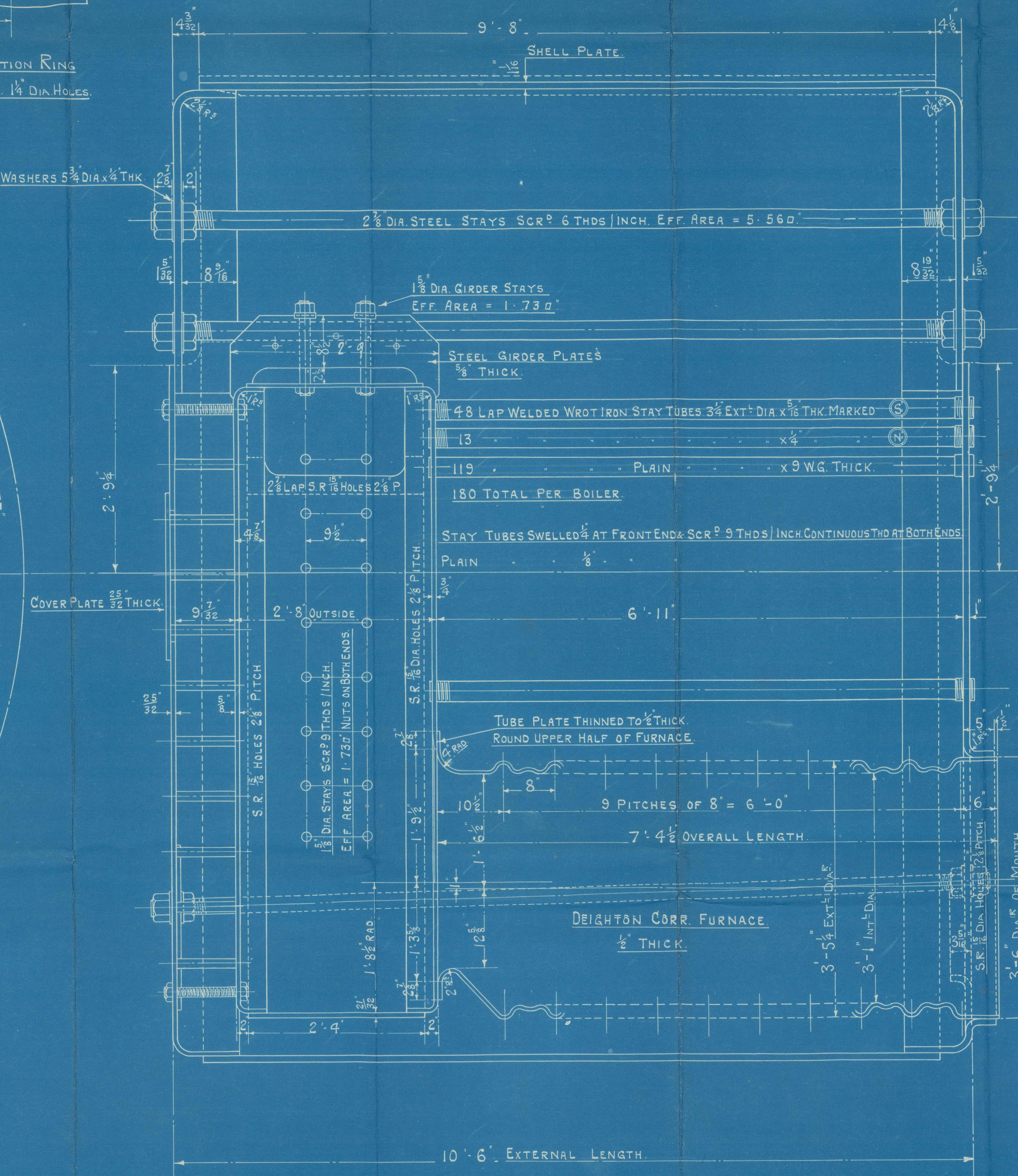
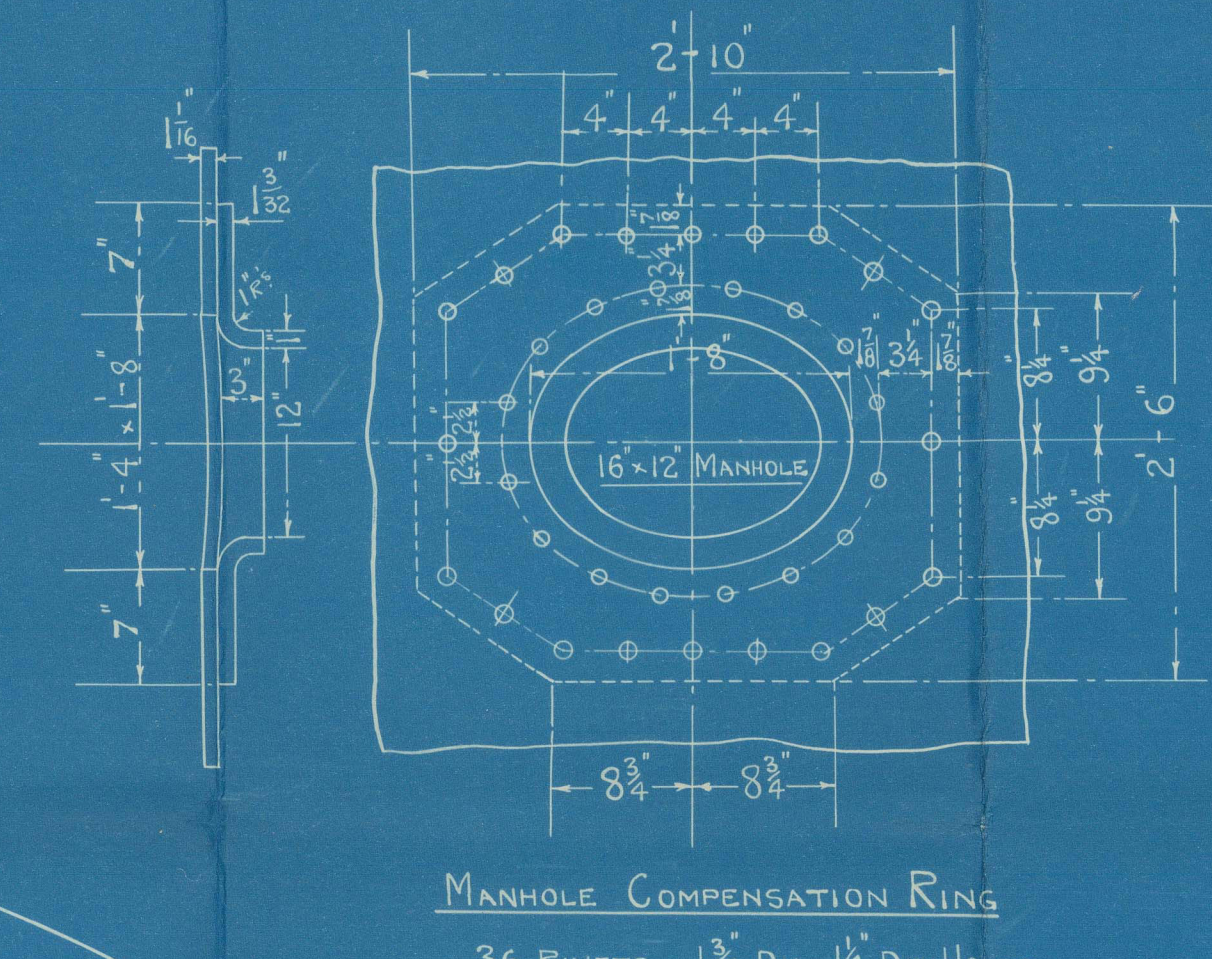
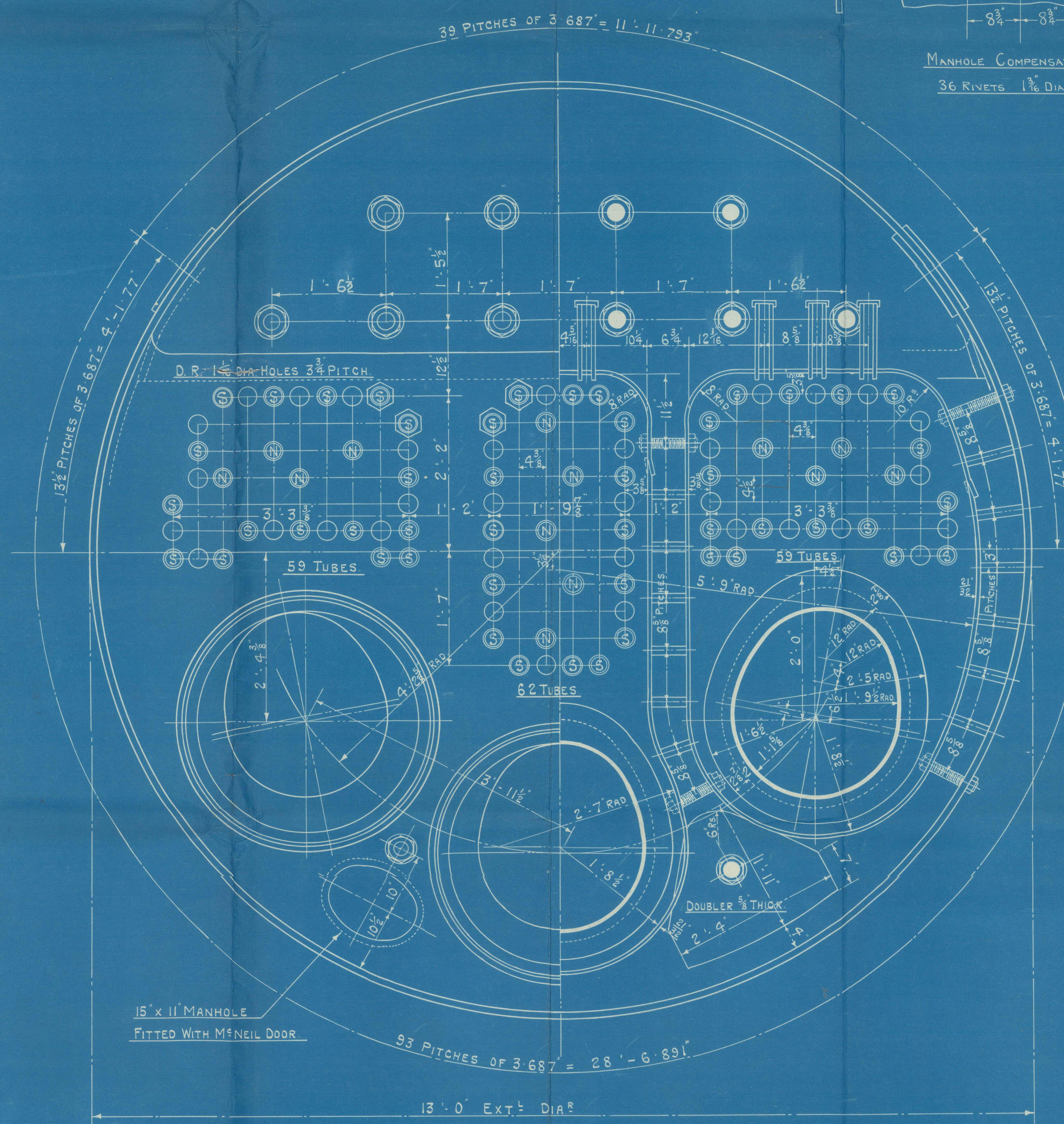


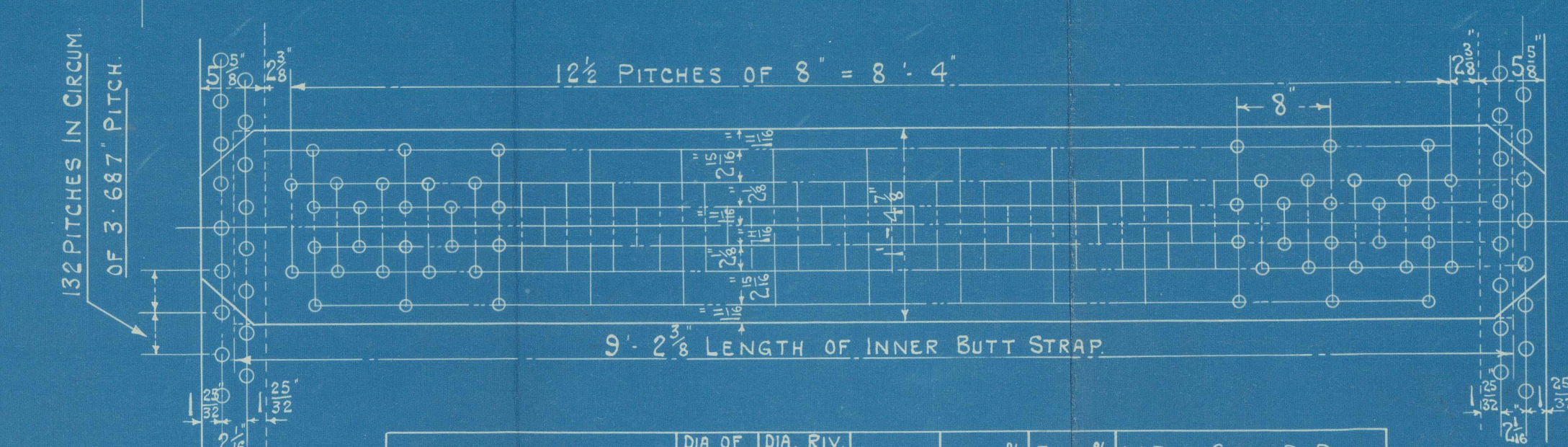
15/3/24



ALL PLATES, STAYS & RIVETS OF SIEMENS-MARTIN MILD STEEL
TUBES - LAP-WELDED WROUGHT IRON
INNER BUTT STRAPS
LONG JOINT - DOUBLE BUTT STRAPS TREBLE RIVETED
CIRC - RIVETED LAP
WORKING PRESSURE = 180 LBS. PER SQ. INCH.
TEST PRESSURE = 320 LBS.
ALL HOLES TO BE DRILLED AFTER PLATES ARE BENT &
FITTED TOGETHER, THEN PLATES TAKEN APART & BURRS REMOVED
ALL RIVETING TO BE DONE BY HYDRAULIC PRESSURE WHERE
PRACTICABLE.

STRENGTH OF MATERIALS		
	THICK ²⁵	TENSILE LIMITS
SHELL PLATES	1 1/8	28-32 TONS
INNER BUTT STRAPS	1	
OUTER		
GIRDER PLATES		
TOP END PLATES	1 3/8	26-30
FRONT BOTTOM END		
BACK		
BACK TUBE PLATES		
C.C. BACKS		
WRAPPER PLATES		
FURNACES		
MANHOLE COMP. RING	1 3/8	
LONG STAYS		28-32
SCREWED STAYS		26-30

HEATING SURFACE		SQ. FEET
180 TUBES 3 1/4\"		1059
FURNACES		135
COMB. CHRS		201
TOTAL FOR 1 BOILER		1395
2 BOILERS		2790
LENGTH OF FIREGRATE = 5' 0"		
BARS IN 2 LENGTHS		
GRATE AREA IN ONE BOILER		46.58
2 BOILERS		93.16
RATIO H.S. : G.A. :: 30 : 1		
SIZE OF SAFETY VALVES 2 1/2\"		



	DI. OF RIVET	DI. OF RIV. HOLES	PITCH	PLATE %	RIVET %	W.P. OF SHELL BY RULE
LONGITUDINAL SEAM	1 1/8	1 1/8	8	85.93	30	182 LBS./SQ.
CIRCUM. SEAM	1 1/8	1 1/8	3.687	67.7	44.4	

15-3-24
15/3/24

BOILERS. ENC NOS 615-6

13'-0" EXT. DIA. x 10'-6" EXT. LENGTH x 180 LBS./SQ. W.P.

2 - OFF THIS FOR EACH ENG. NO.

TO PASS LLOYD'S TESTS & REQUIREMENTS.

SCALE = 1" = 1 FOOT.

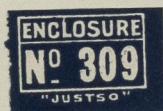
6TH MARCH 1924.

DRC. NO 3269

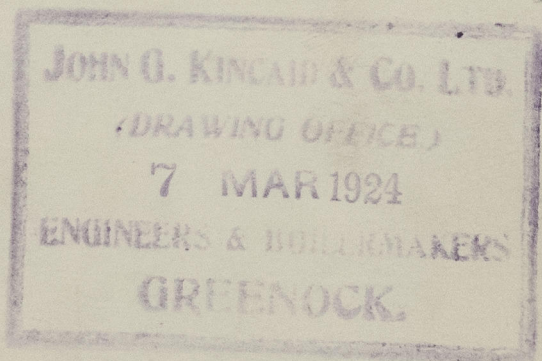
John G. Kincaid & Co. Ltd.
London E.C. 6 15/6

Barclay Curie & Co. Ltd.
1800004/5
m.p. 1800004/5

615. S. S. "Forestgate."
Greenock Report No. 18288



616. S. S. Foresthill
G/L 44064



RETAIN



© 2021

Lloyd's Register
Foundation

W1308-0101