

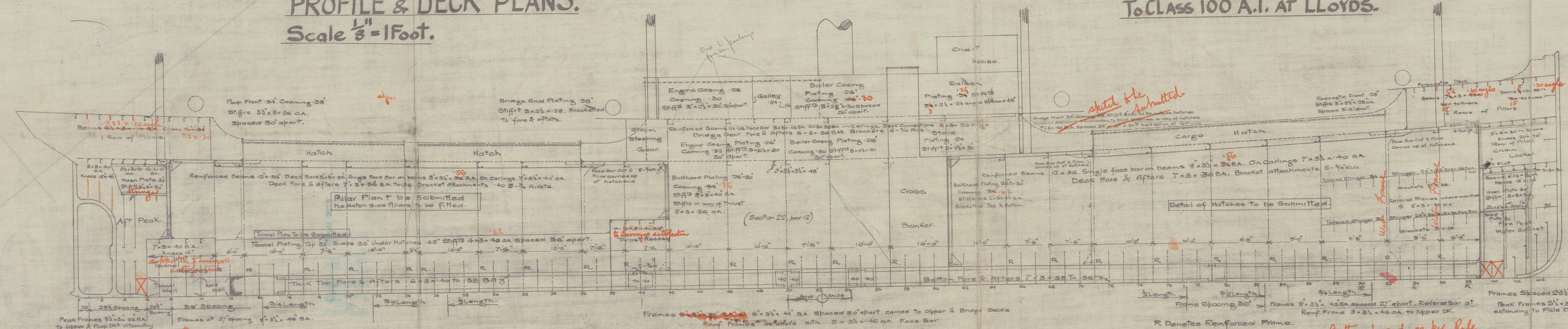
11.2.19.

SS. No 401 & 2
PROFILE & DECK PLANS.
Scale $\frac{1}{8}" = 1 \text{ Foot.}$

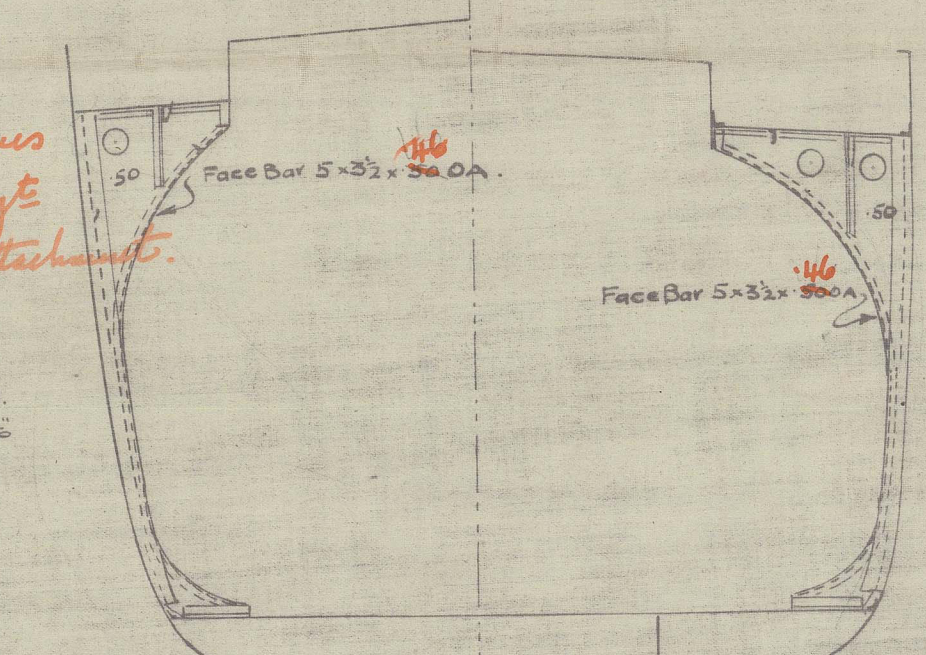
MILLAR'S SYSTEM OF FRAMING
(PATENTED)

DIMENSIONS = 254'-0"BP x 376"MLP x 20'-6"MLD
To Class 100 A.I. AT LLOYDS.

THE
GRANGEMOUTH DOCKYARD CO. LTD.
Shipbuilders and Repairers,
GRANGEMOUTH.



*Stringers and Web Frames
in way of painting, etc.
have double shell thickness.*

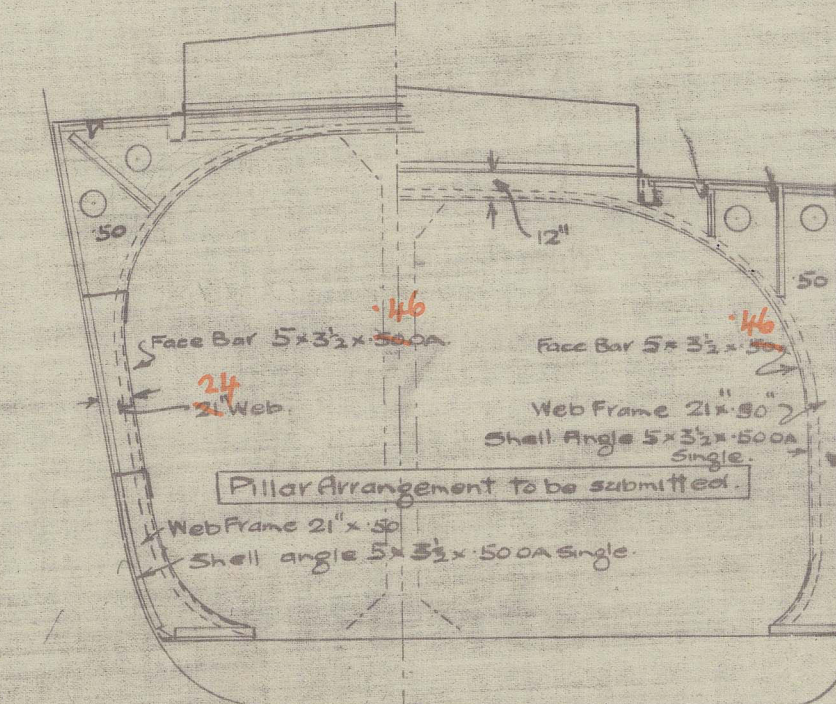
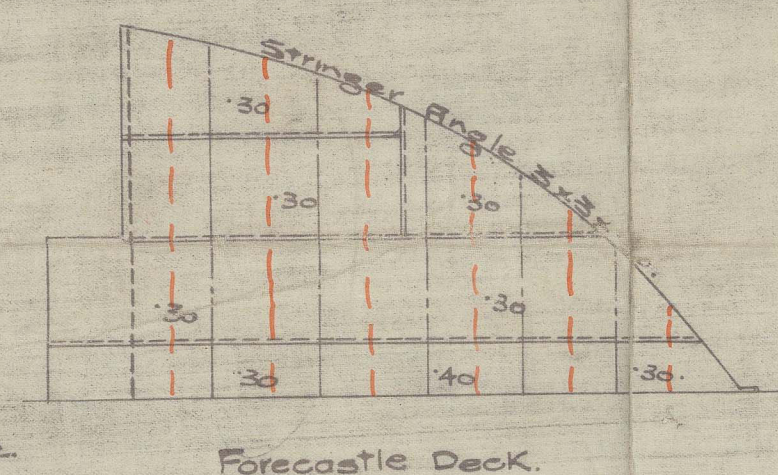


Bracket at F 87. Bracket at F 75, 79 & 83.
also at reinforced frames at 13, 17, 20, 24, 25, 29, 32 & 36.

Plan of Peak Bulkheads
to be Submitted.

Note: The scantlings are submitted on the understanding that they are the minimum acceptable for Class Errors & omissions excepted.

NUMERALS.
Breadth 37'5
Depth 20'5
(BTD) .. 58'0 Trans N°
Length 254'
L x (BTD) 14752 Long 1 N°
d = under 17' .. $\frac{1}{5} = 1234$ to clipper DK.



Web Frame at 92 and 96. Web Frame at 71.

Butt of Longitudinals
Butt straps tank top & bridge 6-3/4" rivets
in double plate straps 24 x 43 x 1/2"
Butt straps tank bottom & upper dk. 6-3/4" rivets
in double plate straps 24 x 52 x 1/2"

THE GRANGEMOUTH DOCKYARD CO. LTD.
SHIPBUILDERS
15-FEB-1919
AND REPAIRERS
GRANGEMOUTH

Profile & Deck Plan

N^o 401-2

S/S "BRANCAS"

GLASGOW REPORT No. 39553
39718.

S/S Cassard



Marie Therese Le Borgne -



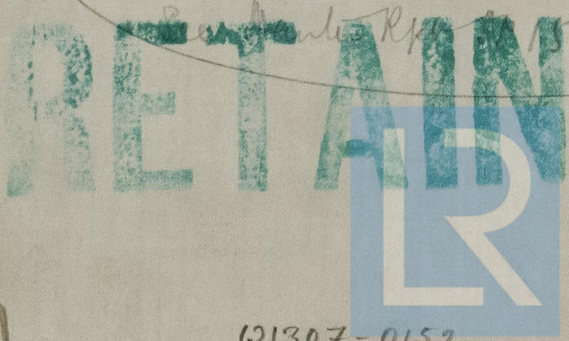
D. 158



D. 158



S.S. "Penthièvre" (ex "Cassard")
converted to wine carrier 3.48



© 2021

Lloyd's Register
Foundation

W1307-0152