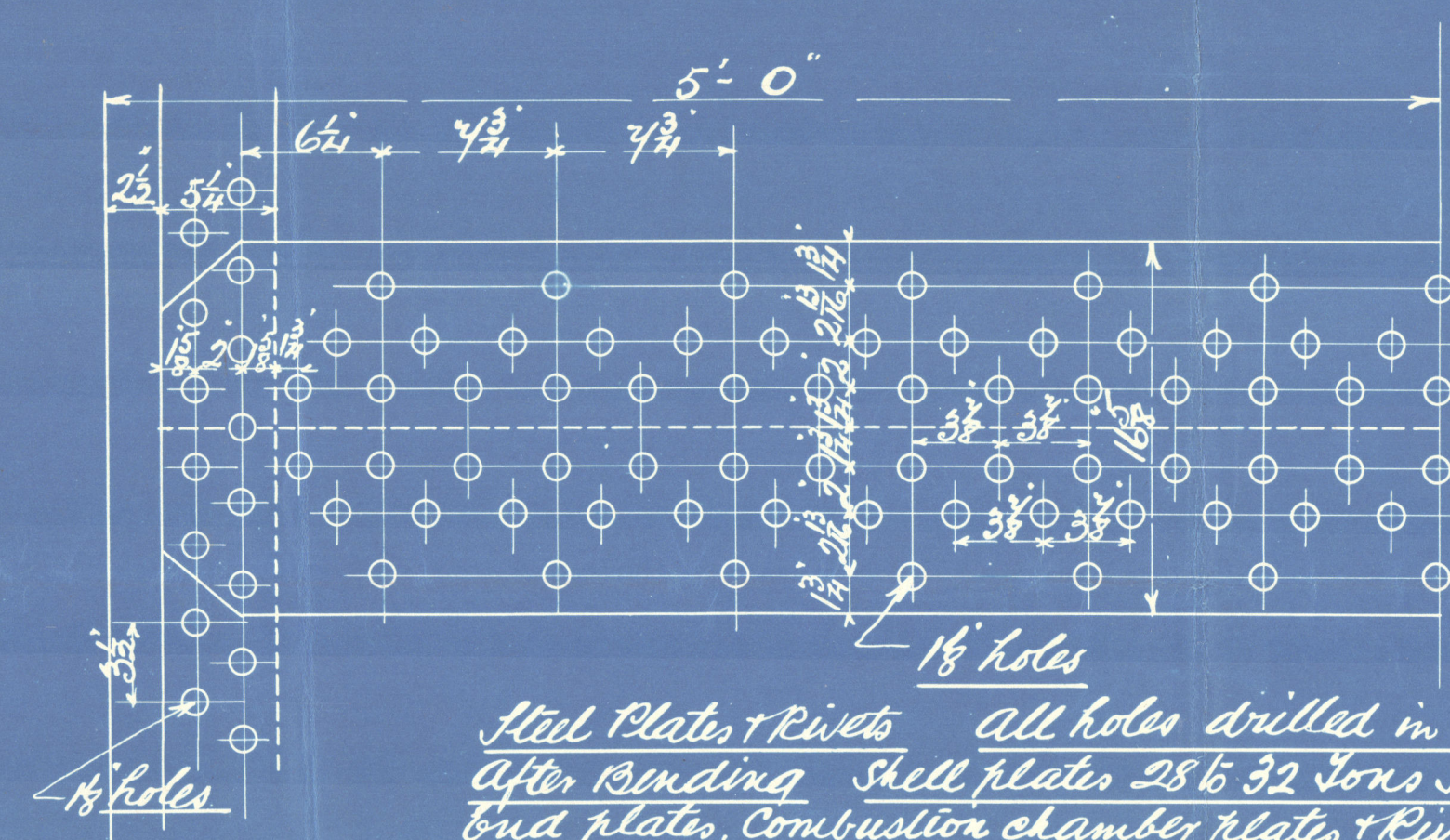


12/4/10

STEEL BOILER ISO LBS WP N° A30 & 31

-TO LLOYDS

APRIL 2ND 1910

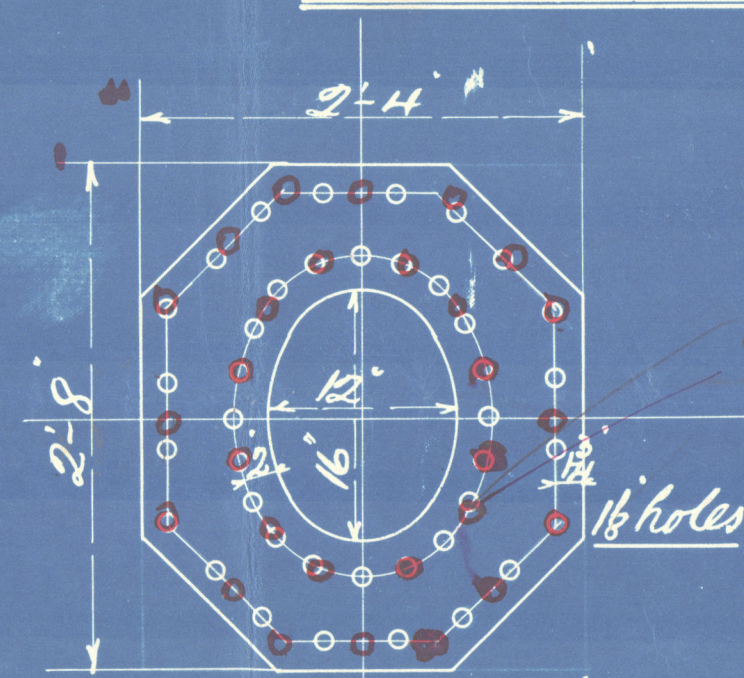


Double Bulk Straps $1\frac{3}{4}$ " thick
inside + out.

85% 85%	Plate
84-125%	Rivet
<u>184 lbs 11. P.</u>	

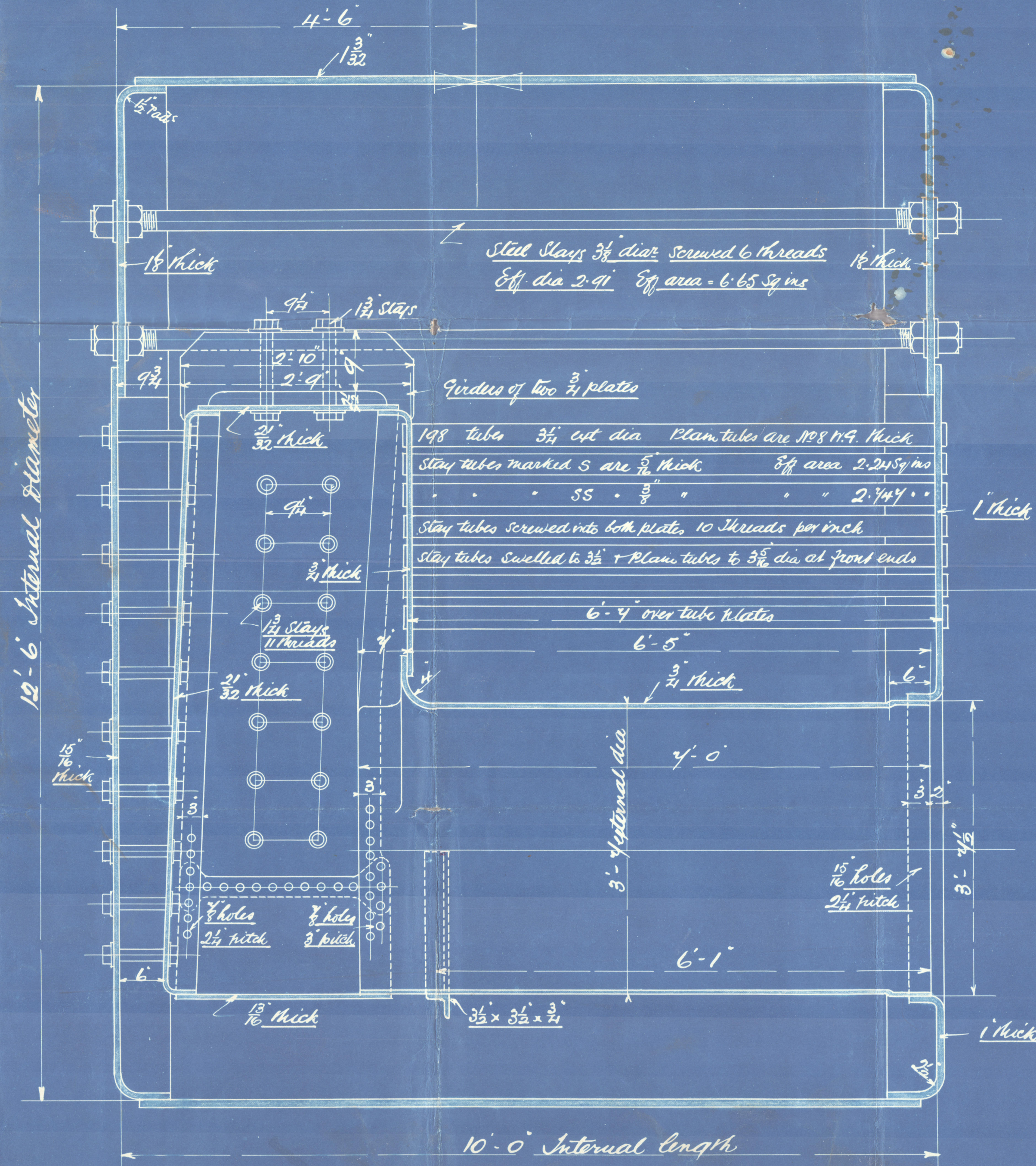
Total Heating Surface
1340 Sq feet.
Grate area 34.7 Sq.ft.

Steel Plate, + Rivets all holes drilled in place
After Binding Shell plates 28 6 32 Tons Sensitive
End plate, Combustion chamber plate, + Rivets
26 6 30 Tons Sensitive



Manhole Comp' Plate 1 1/8" thick

GREAT CENTRAL CO-OPERATIVE
ENGINEERING AND SHIP REPAIRING COMPANY,
LIMITED.



Steel Stays $3\frac{1}{2}$ diam. Screwed 6 threads $1\frac{1}{2}$ thick
Eff. dia 2.91 Eff. area = 6.65 Sq ins

Girders of two $\frac{3}{4}$ plates

198 tubes $3\frac{1}{4}$ ext dia Plain tubes are 108 H.G. thick

Stay tubes marked S are $\frac{5}{16}$ " thick Eff area 2.24 sq in

SS • 100" • " • " 2.74%

Stay tubes screwed into both plates 10 threads per inch

slay tubes Swelled to $3\frac{1}{2}$ + Plain tubes to $3\frac{5}{16}$ dia at front ends

6'-4" over tube plates

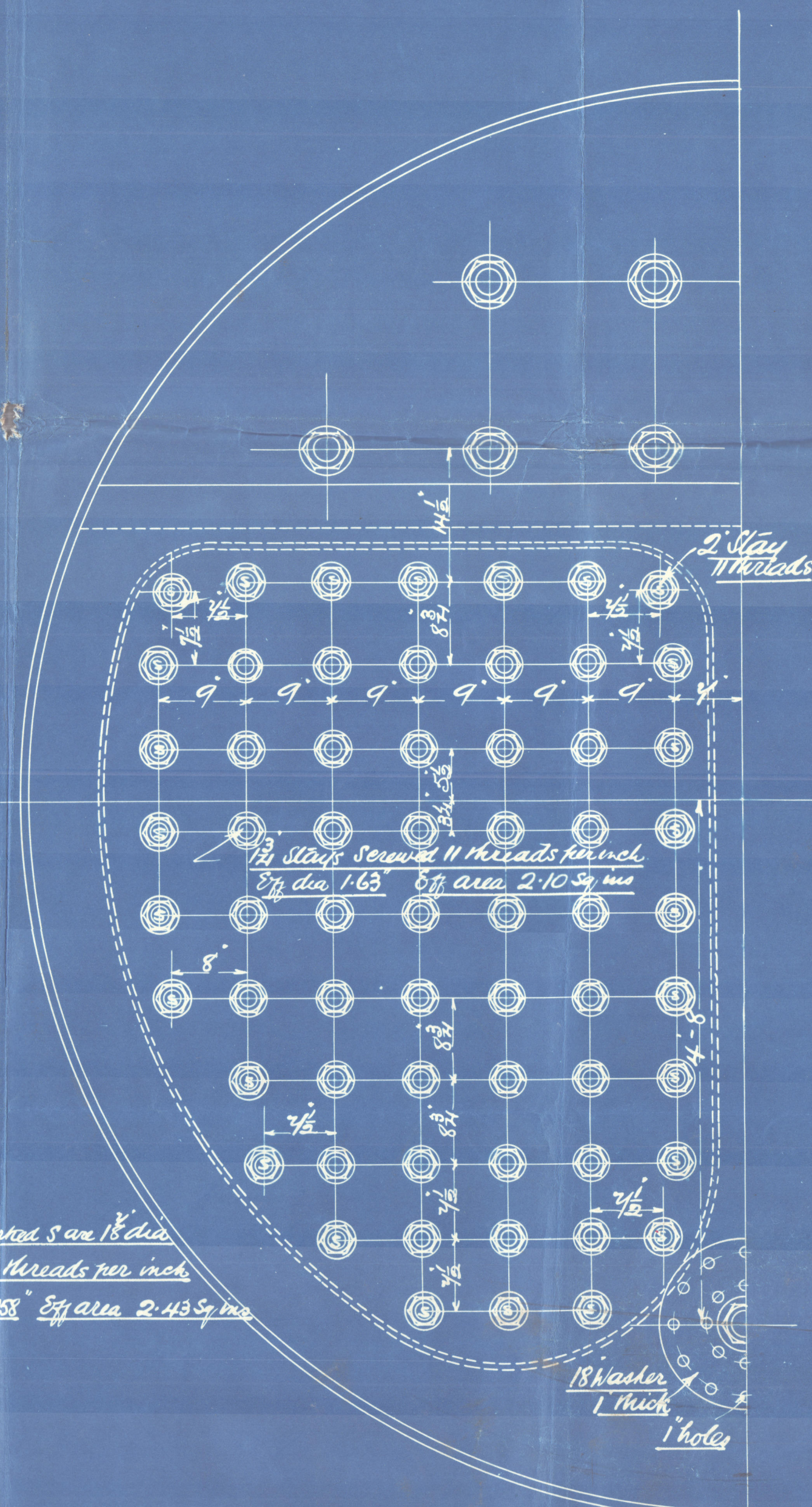
6'-5"

 $\frac{3}{4}$ thick

→ Free

4-0

10'-0" Internal length



2. Stay
Threads

$\frac{1}{2}$ Slaps Screw 11 threads per inch
Eff dia 1.63" Eff area 2.10 sq ins

18 washer
1 thick
1" holes

Stays marked S are 18³/₈ dia
Screwed 11 threads per inch
Eff dia 1.758" Eff area 2.43 Sq in

Nº A 30 & 31

Bolton A30 + A31.
The Great Central Co-operative
Engineering & Ship Repairing Co^{ld}.
Grimsby. Crawler. Arman
Gross Rpt. 6805



RETAIN

2020

Lloyd's Register
Foundation

W1306-0143