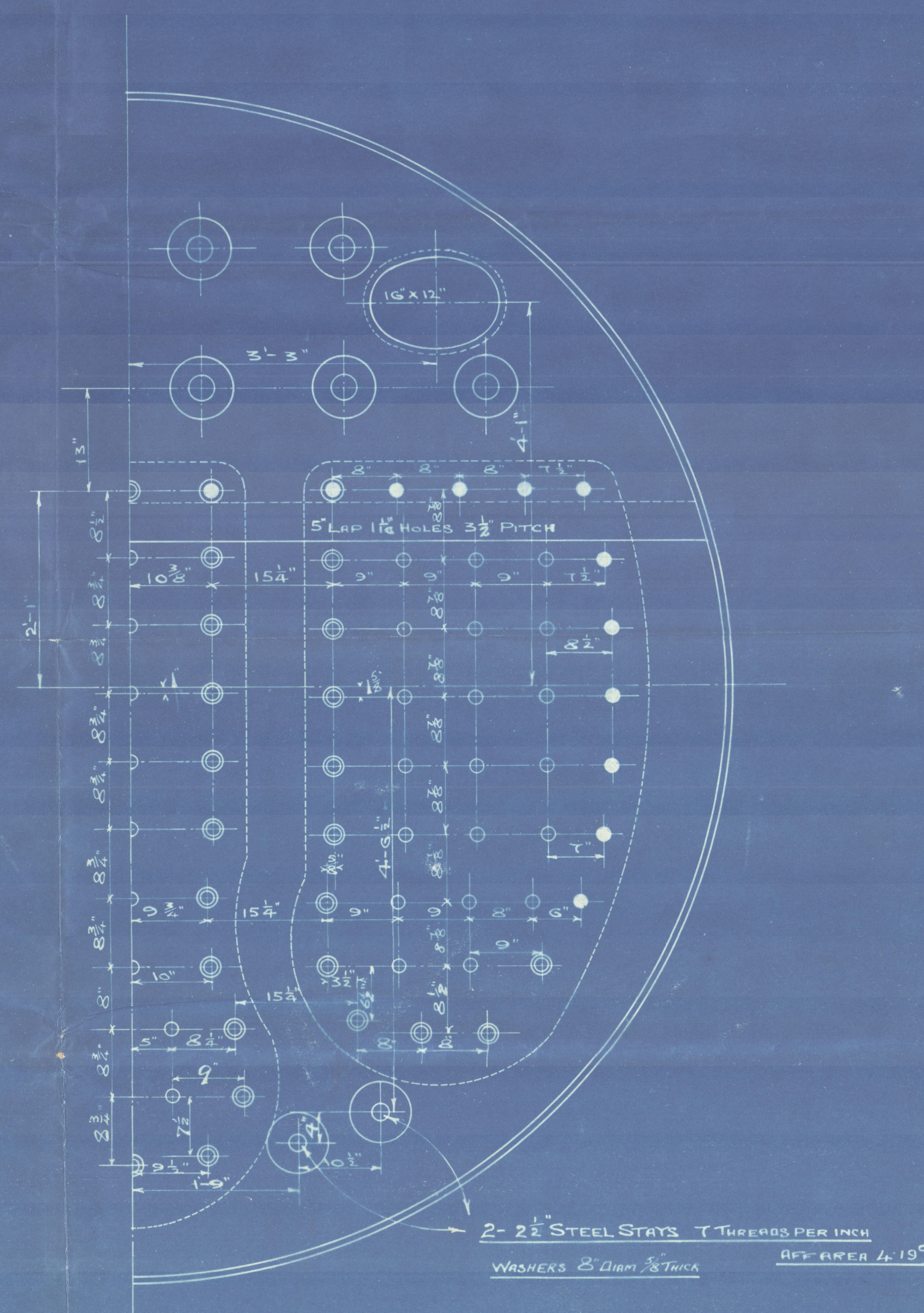
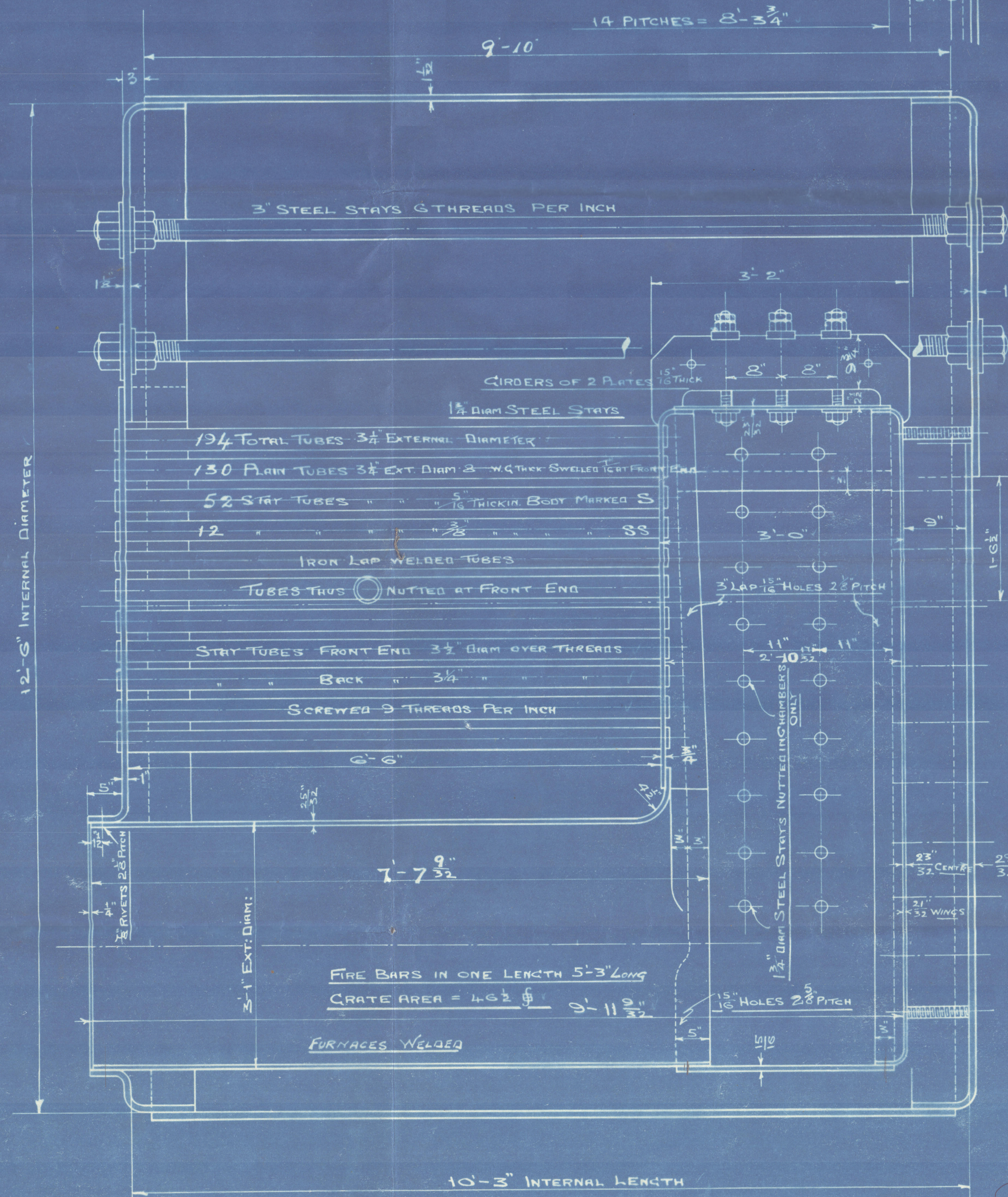
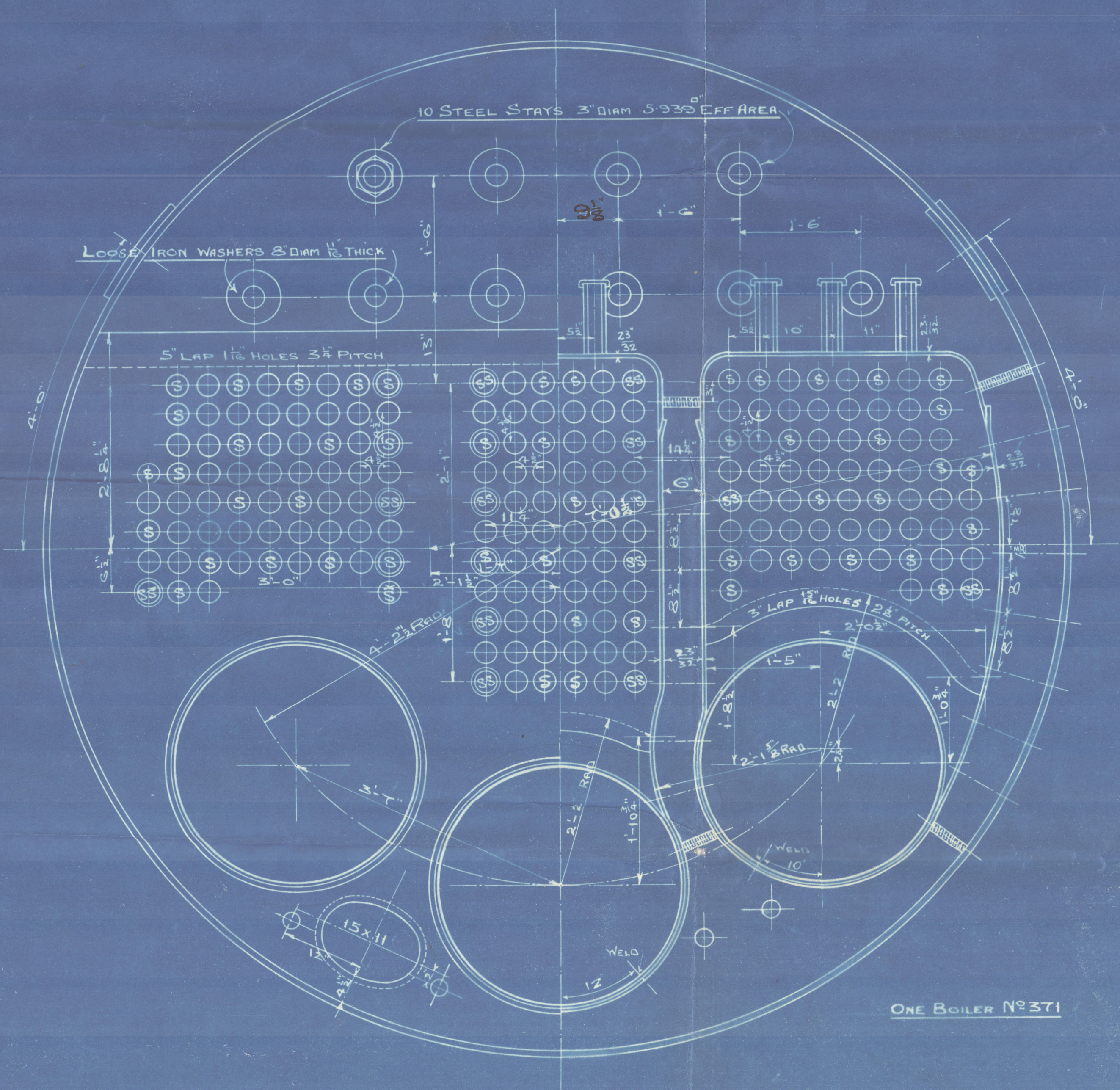
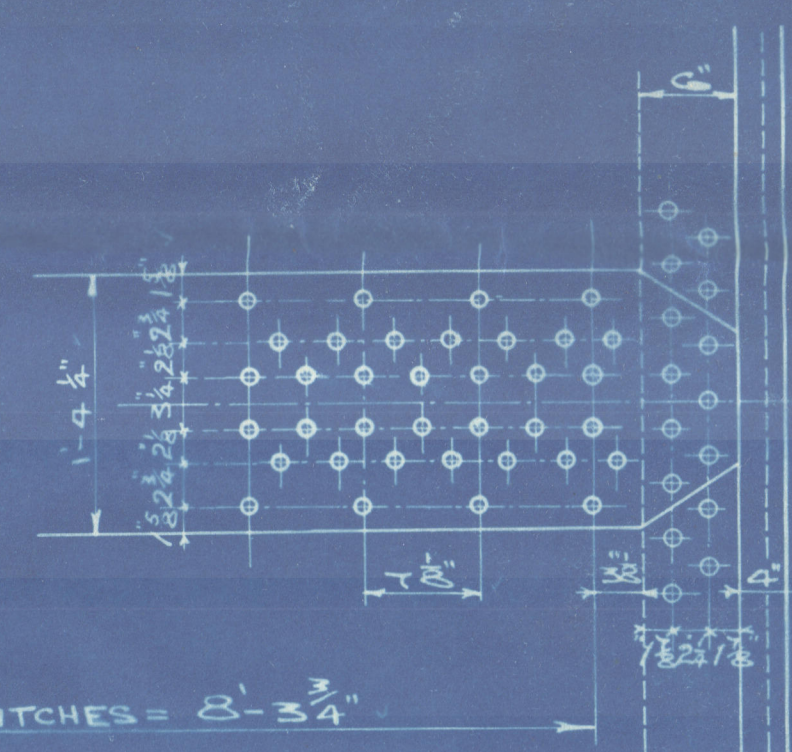


HEATING SURFACE	
TUBES	1072
FURNACES	104
CHAMBERS	210
FRONT TUBE PLATE	24
TOTAL	1410

LONGITUDINAL SEAMS 1" DIAM RIVETS 1 1/2" HOLES 7/8" PITCH
 CIRCULAR " 1 1/8 " 1 1/8 " 3/2 " "
 DOUBLE BUTT STRAPS 1/2" THICK OUTER
 " " " 1 " INNER

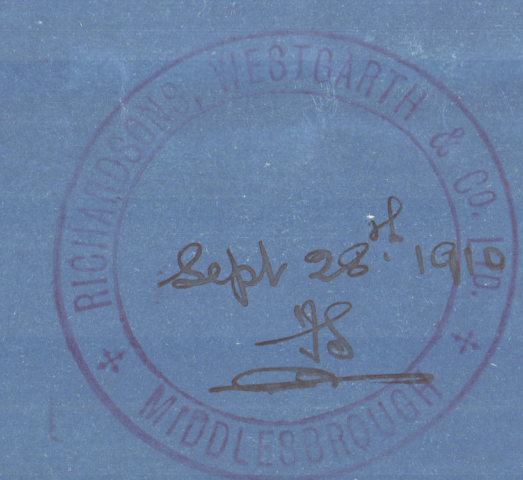


TO PASS "LLOYD'S" REQUIREMENTS FOR 180 LBS. WORKING PRESSURE
 TENSILE STRENGTH OF SHELLS, BUTTS AND MANHOLE RING PLATES 28 3/4 TO 32 TONS
 " " GIRDER PLATES AND LONGITUDINAL STAYS 28 TO 32 TONS
 " " INTERNAL AND END PLATES AND SCREW STAYS 26 TO 30 TONS

BOILER N° 371

FOR MESSRS THE COOLE SHIPBUILDING CO'S S.S. N° 22 145

SCALE 1 INCH = 1 FOOT



STAYS IN CHAMBER BACK	
1 1/2"	STEEL STAYS AFF AREA 2.096 sq" NOTTED IN CHAMBER ONLY
1 3/4"	" " " " " " AT BOTH ENDS
1 1/2"	" " " " " " " " " "
2"	" " " " " " " " " "

ALL SCREWED STAYS 11 THREADS PER INCH

Richardsons, Westgarth & Co. Ltd.

Main Boiler No. 371

for

Foote S. B. & R. Co.

S.S. No. ~~132~~ 145

W. P. 180 lbs

No. 4663
LLOYD'S TEST
360 ^{lbs.}
I. G. H. J. K.

22" Gas "

~~Qual. Report 723~~

Hull 24482.



Lloyd's Register

Foundation

W1306-0050