

No 2¹

STEEL BOILERS FOR BUILDERS No

DIA.16'-0"×12'-0" LONG

WORKING PRESSURE 200 LBS.

SCALE 1 IN. TO 1 FT.

2 THUS.

EACH SHEET

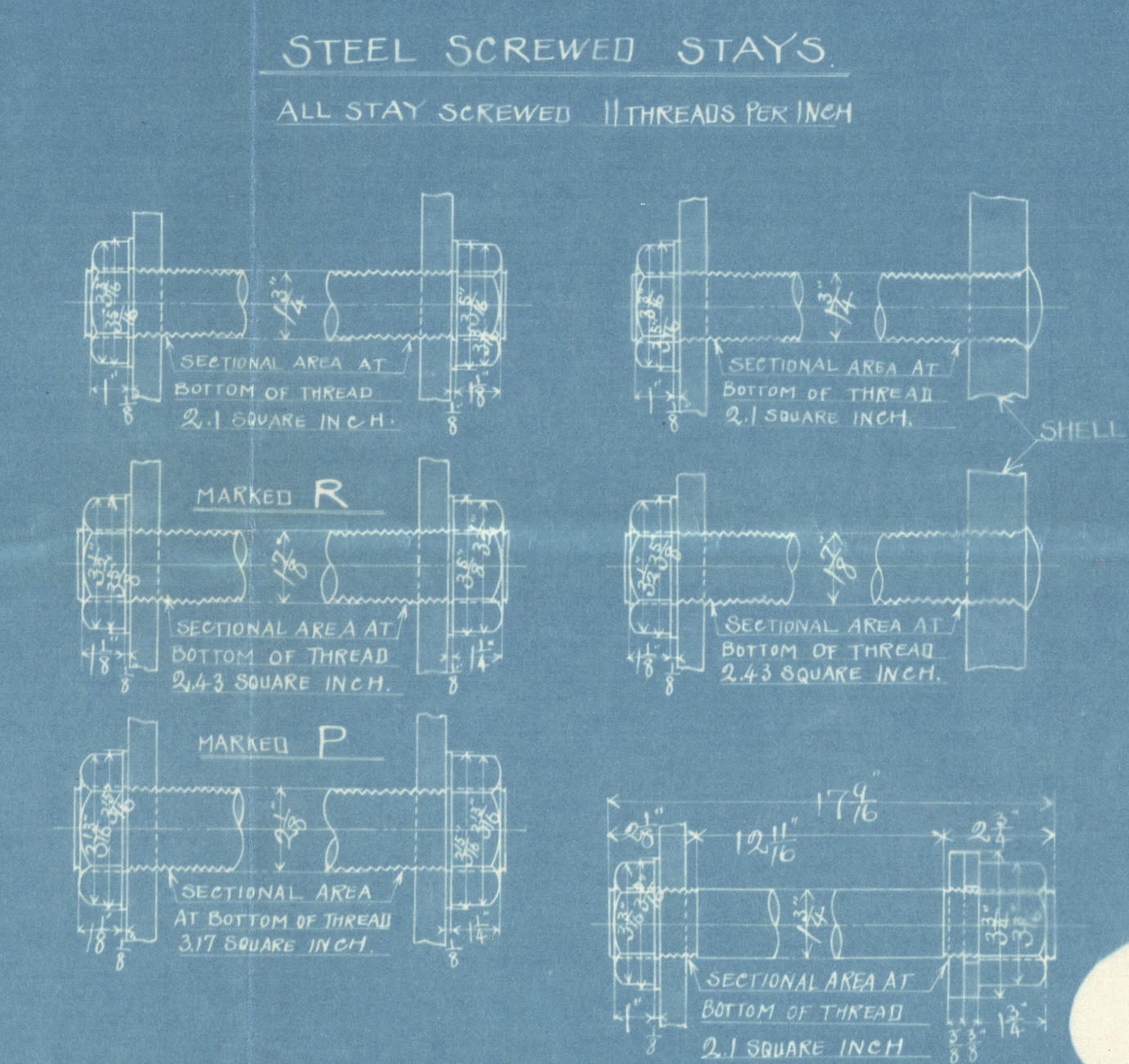
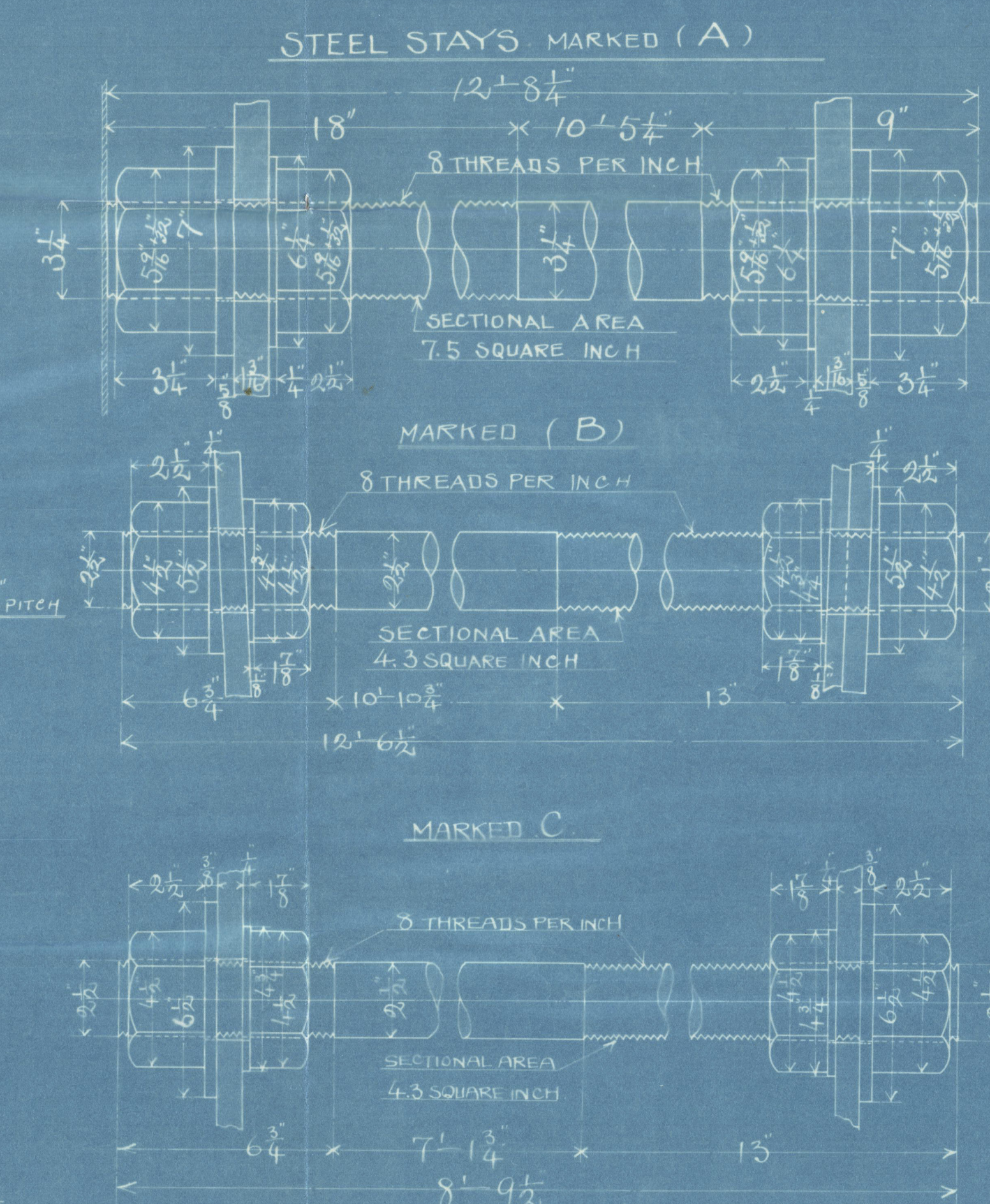
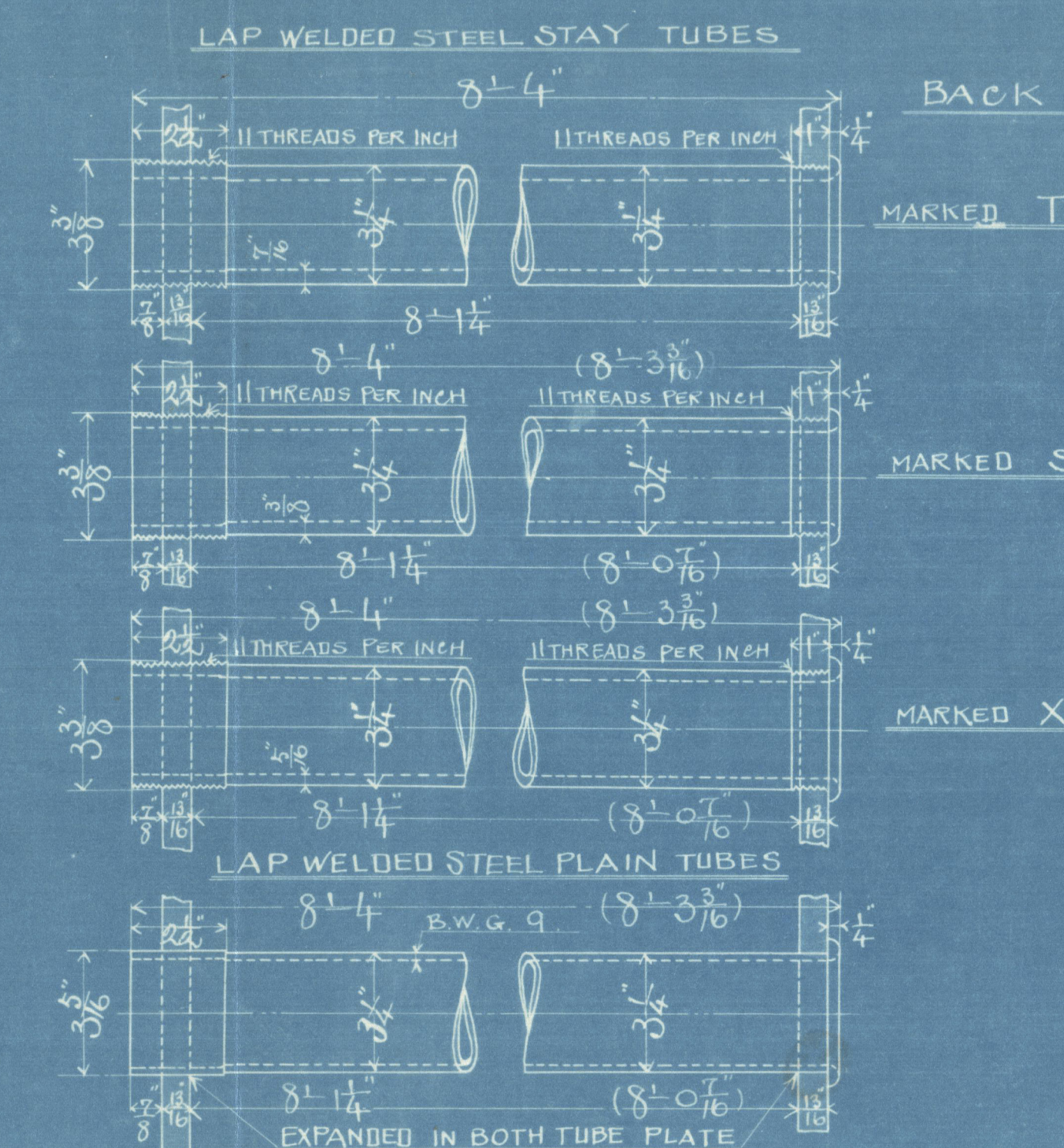
HEATING SURFACE.	
TUBES.	2411.415 ^{50 FT}
FLUES	164.541
FIRE BOXES	258.472
BACK TUBE PLATES.	70.256
TOTAL	2904.684
GRATE AREA.	63.250

RATIO OF H/G.	4.5924
SECTIONAL AREA OF TUBES.	15.368 ^{1 FT}
SEC. AREA OF TUBES.	1
GRATE AREA.	4.116

TUBES	
239 STEEL PLAIN TUBES 3 ¹ / ₄ " DIA. NO. 9 B.W.G. THICK	X
40 STEEL STAY TUBES 3 ¹ / ₄ " DIA. 1 ¹ / ₂ " THICK MARKED	X
65 STEEL STAY TUBES 3 ¹ / ₄ " DIA. 1 ¹ / ₂ " THICK MARKED	S
6 STEEL STAY TUBES 3 ¹ / ₄ " DIA. 1 ¹ / ₂ " THICK MARKED	T
350 IN ALL	

TENSILE STRENGTH OF SHELL PLATES 28 TO 32 TONS PER SQUARE INCH

PLAN OF SHELL RIVETING
ALL HOLES TO BE DRILLED IN PLACE



KAWASAKI DOCKYARD Co., LTD.

Builders No.	433-4-5.
Main Boiler.	
(18'-0" Dia.)	
Drawing No.	

S. S. "Yufuku Maru"

Kobe Rpt. No. 2455

RETAIN



© 2021
Lloyd's Register
Foundation

W1305-0218