

Wreck Section 130 D

(1)

J READHEAD & SONS, L^d

PROFILES & DECKS

N^o 515

ss Thornliebank

NEWCASTLE ON TYNE.

Report No. 97322.

9 x 3 1/2 x .547 NRS.

in place

10

W130 - 0073



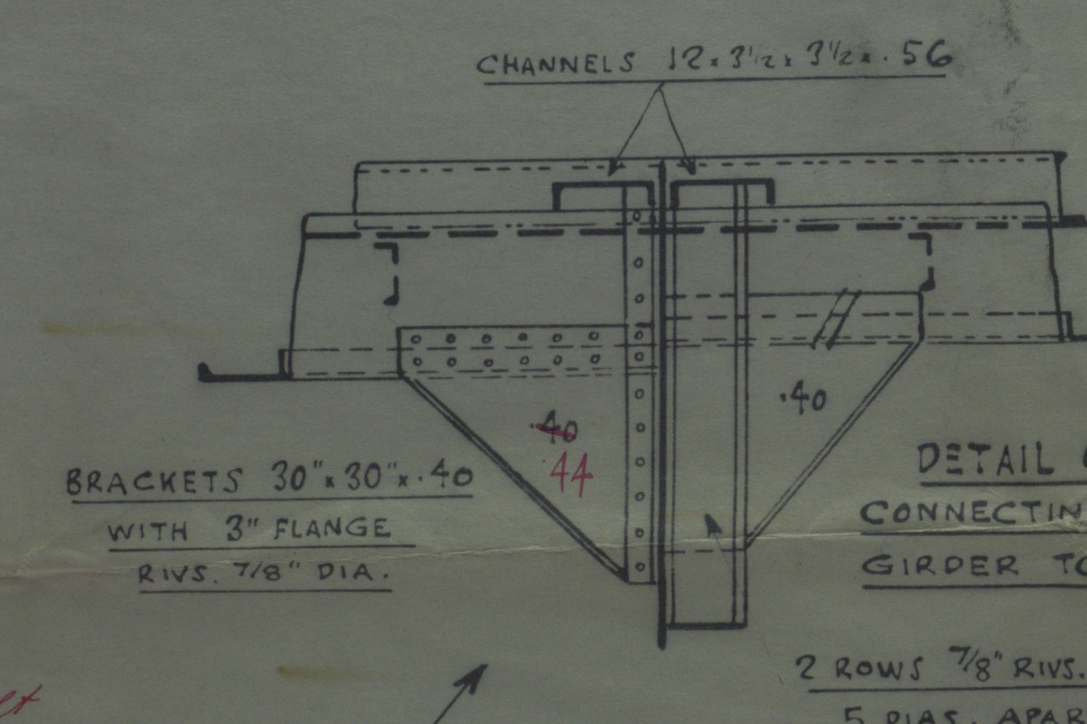
© 2019

Lloyd's Register
Foundation

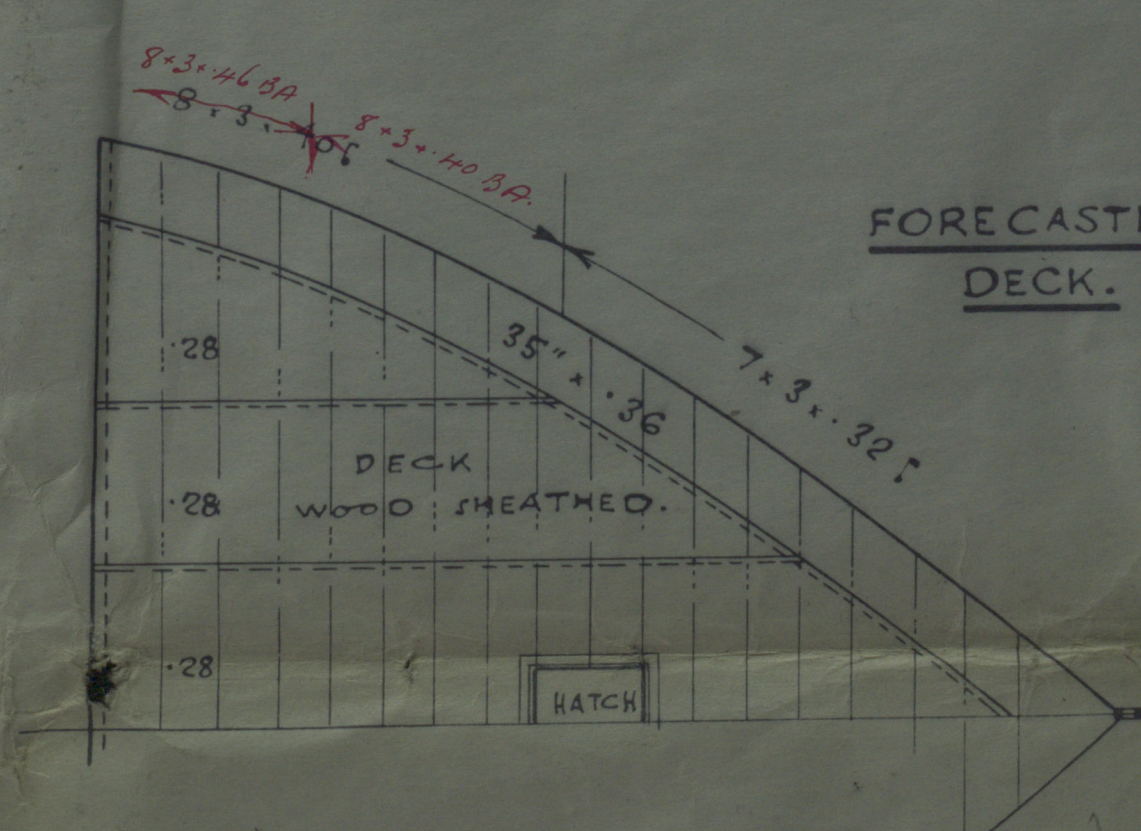
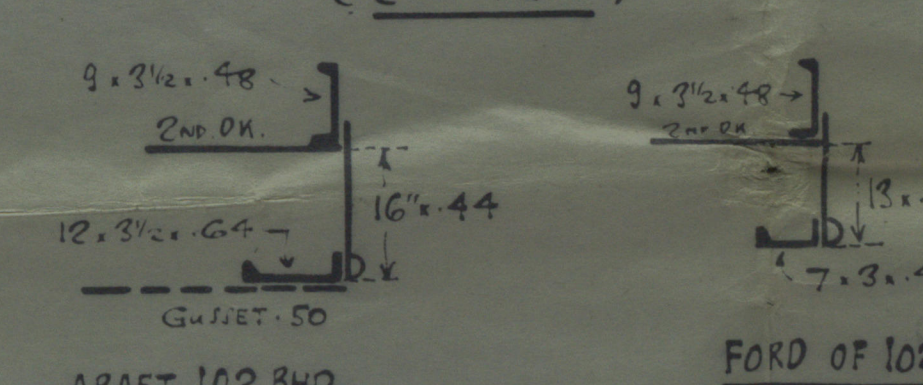
DIMENSIONS AS PER RULE.

CLASS 100 A.I. ✱ WITH FREEBOARD.

SCALE $\frac{1}{8}" = 1 \text{ FOOT}$.



9. 24. 48



JOHN READHEAD & SONS, LT.
SHIPBUILDERS, ENGINEERS, &c.
SOUTH SHIELDS.

JKL
20/1/38