

TENSILE STRENGTH OF SHELL PLATE

TO BE NOT LESS THAN 26 TONS/IN²

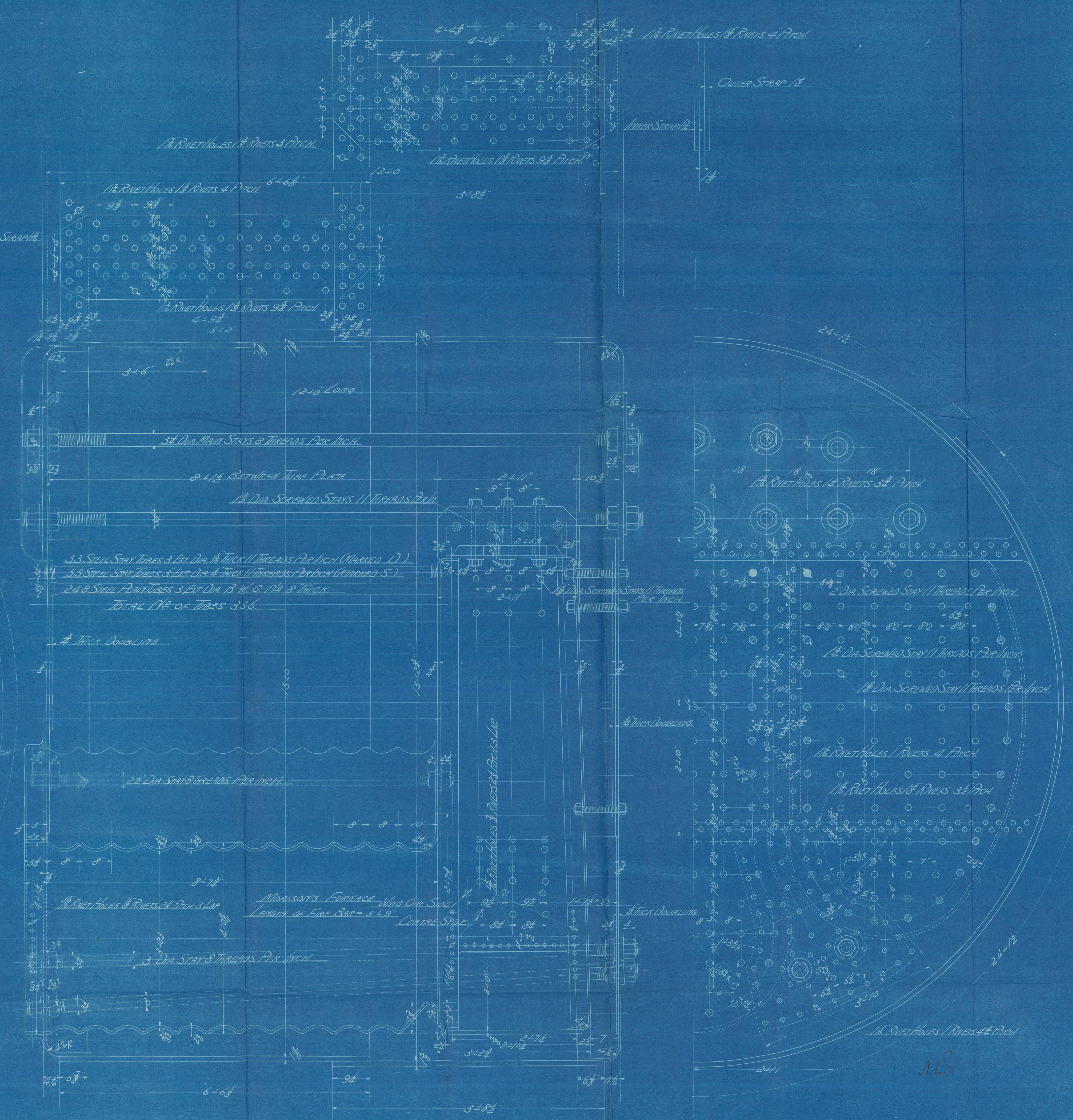
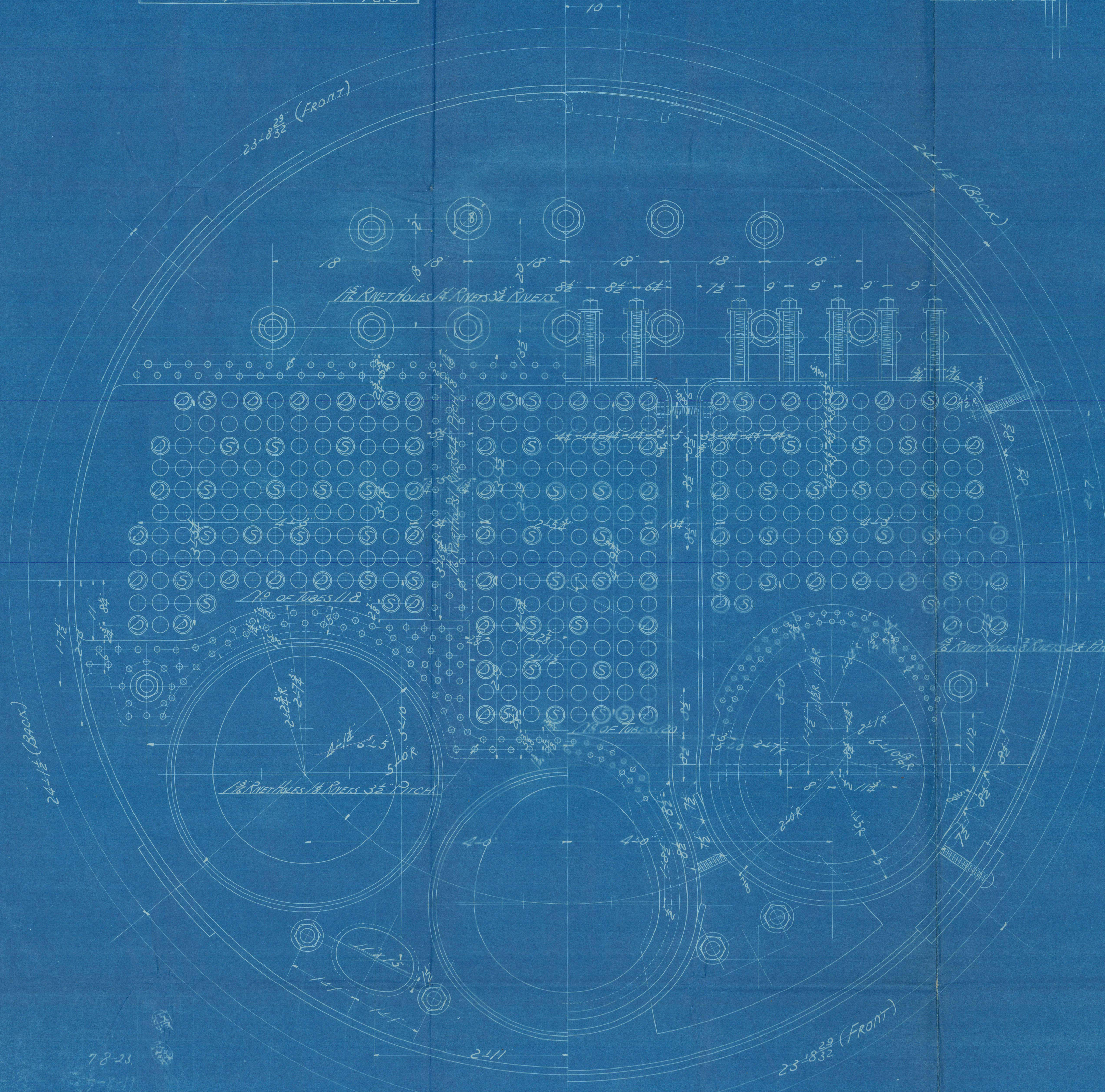
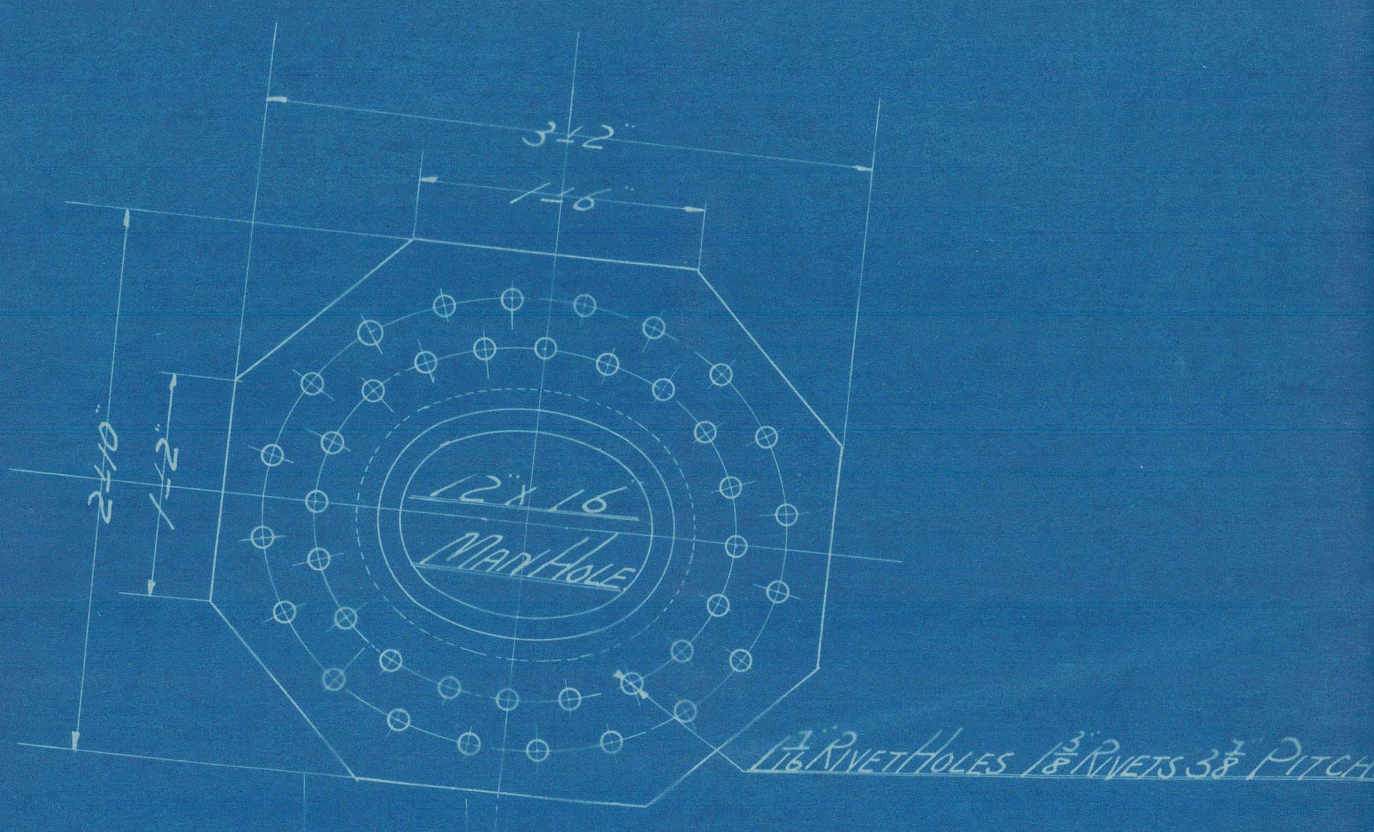
STEEL BOILER FOR NO. 950.

SCALE 1 IN. TO ONE FT.

W.P. = 150 LBS/IN²

TWO OFF. (PORT & STAIR^{BD.}) ONE THUS.
ONE OPPOSITE.

PARTICULARS (ONE BOILER)	
HEATING SURFACE OF TUBES	2271.7
COMB. CHAMBER	271.9
FURNACE	159.9
TOTAL HEATING SURFACE	2703.5
TOTAL GRATE AREA	63.9
Wt.	42.3



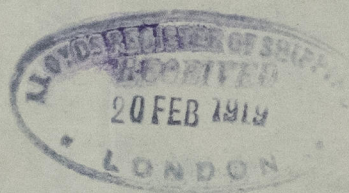
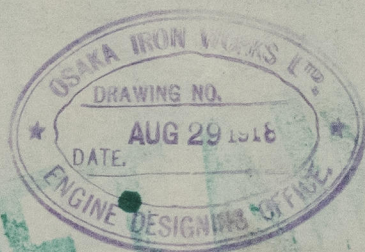
78-28
78-11
78-8
78-16

78-123

WING BOILERS FOR NO 950

(Alteration)

S. S. Taiho Maru
Rob. Rpt. No. 2383



© 2021

Lloyd's Register
Foundation

W1296-0044