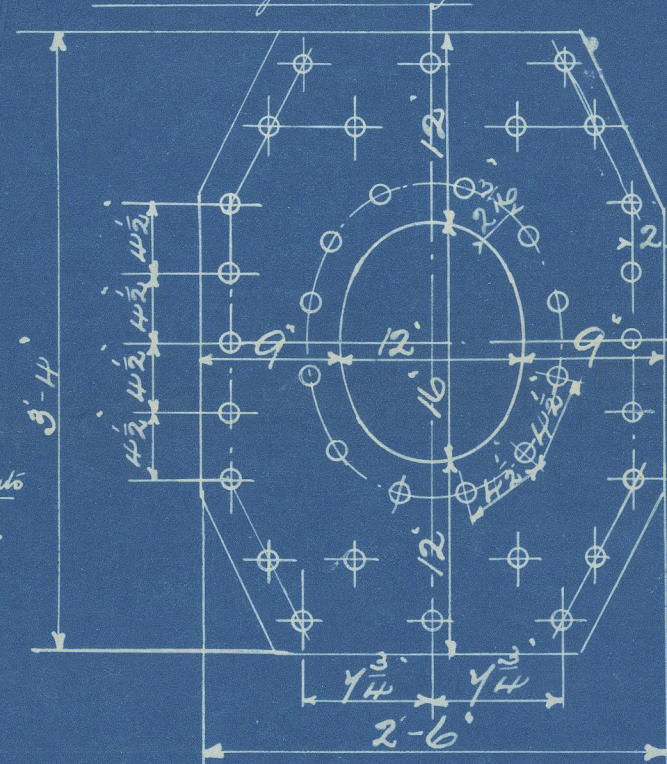


Enclosure for
Lloyds Surveyor
Hull

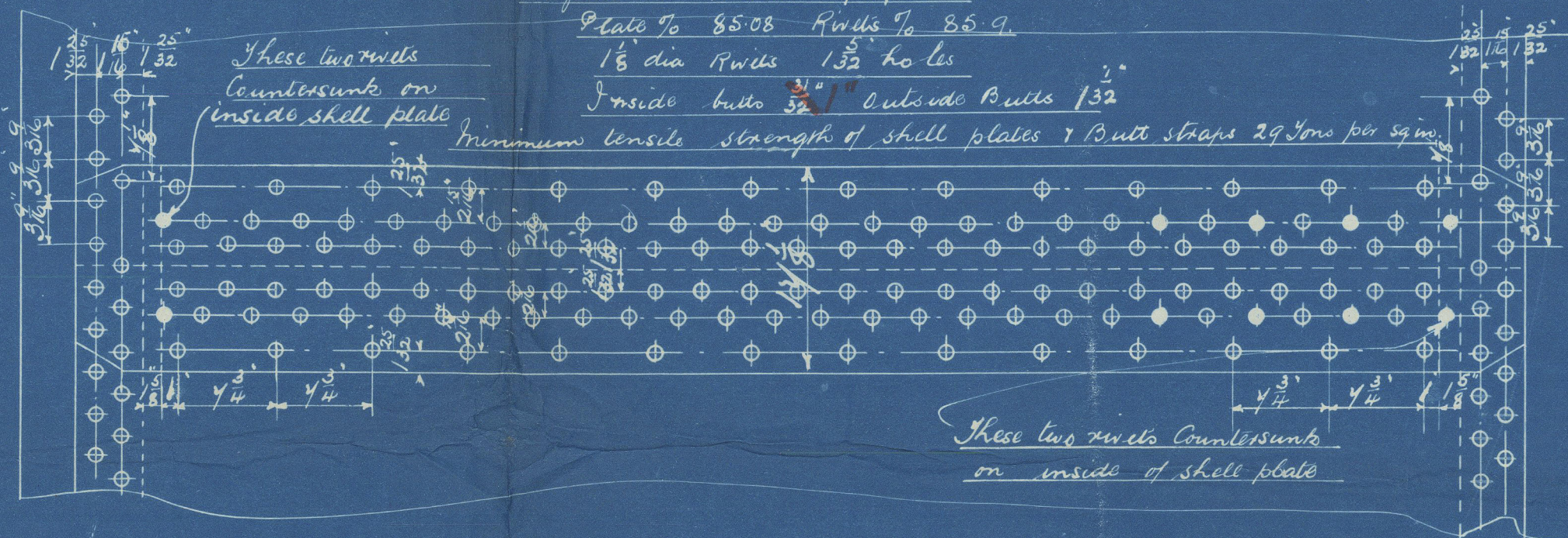
DIA OF BOILER 14'-0"
LENGTH OF DO 10'-6" inside
NUMBER OF TUBES 208
LENGTH OF DO 6'-4"
DIA OF DO 32" AREA THRU TUBES 11' 1/2 Sq Ft.
HEATING SURFACE IN TUBES 1258
TOTAL HEATING SURFACE 1590
FIRE BAR SURFACE 44.5 sq ft.
DIA OF SAFETY VALVES
CUBIC FEET OF STEAM SPACE 35/Cu ft.
WORKING PRESSURE 150 lbs. LLOYDS.

Studs on manhole doors
are not to project through
when door is closed up.

2 doubling plates 1/8" thick.
Rivets 1/8" holes 1/8"
Sillies outside shell with short
axis longitudinally



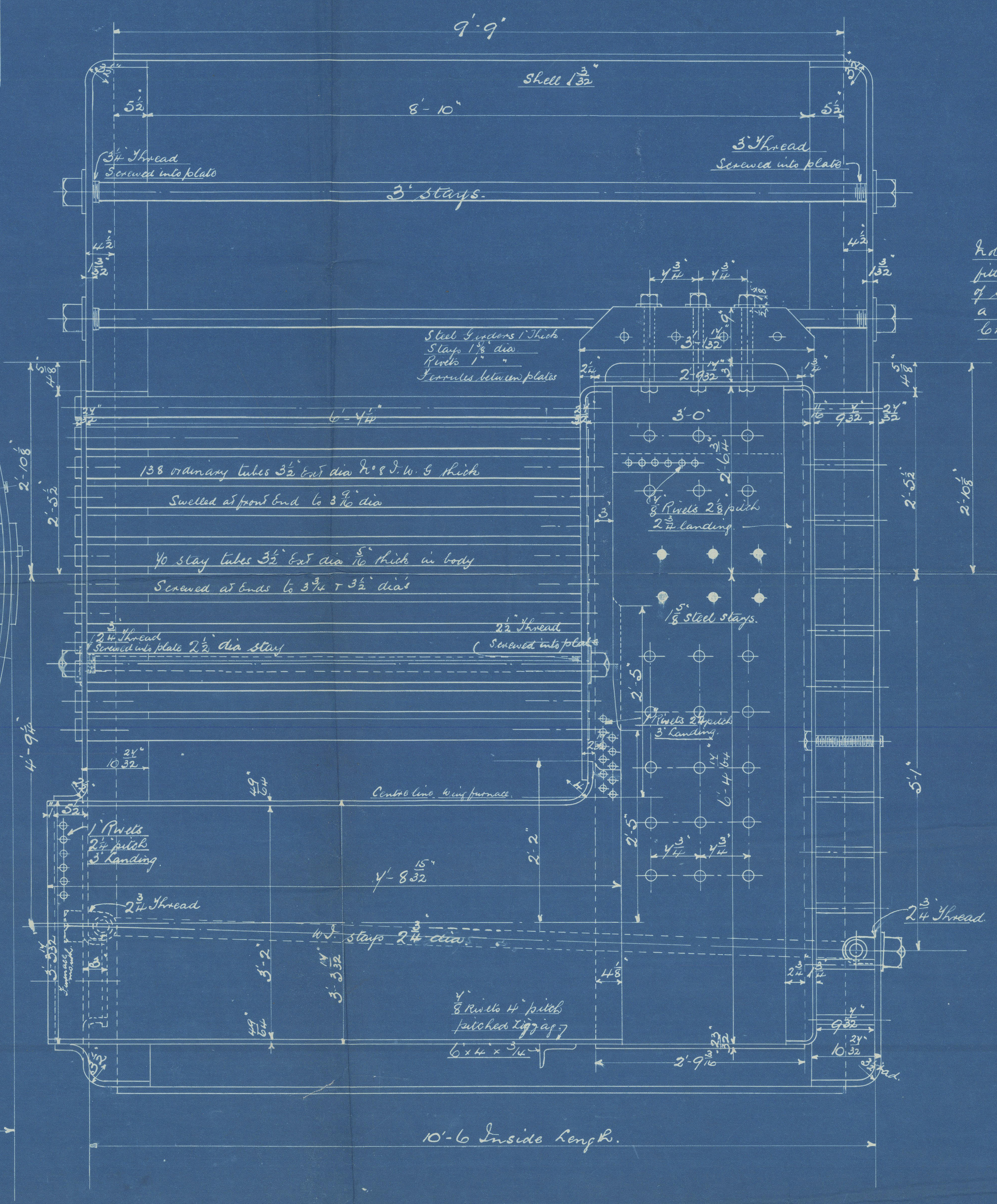
Circumferential seams 3/16" x 1/4" pitch
1/8" Plate 68.1 1/8" Rivets 120 4
Longitudinal seams 1/4" pitch
Plate 56 85.08 Rivets 120 86.9
1/8" dia Rivets 132 86.9
Inside tube 52" Outside Rivets 132
Minimum tensile strength of shell plates & Butt straps 29 tons per sq in.



Note! The plates, rivets & stays of steel by the Siemens Martin process
all have been quenched throughout the boiler. Those in shell after the plates
are bent.
All flanged plates to be annealed after the pieces are bent.
Steel stays are not to be annealed.
The tensile strength of the shell plate & butt straps, to be between
29 & 33 tons per sq inch.
Combustion Chamber stays are screwed into both plates
no washers inside C.C.

Particulars of Stays

Stay	Dia.	Length	Area of Head	Area of Shank
Steam Space stay	3"	6'	6.10	1.00
Bottom stay	2 1/4"	10'	5.05	1.00
C.C. Stays	1 1/2"	10'	1.40	2.00
"	1 1/2"	10'	2.00	2.00
"	1 1/2"	10'	2.39	2.00
Water Space stay	2 1/2"	8'	4.10	2.00
Stay plates	3 1/2"	9'	2.36	2.00

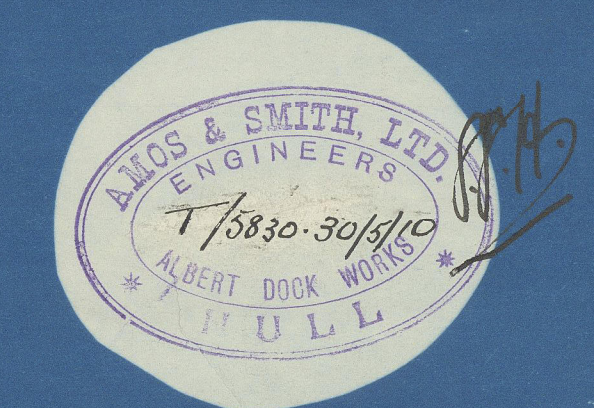


Note! All margin stays to be
filled with a nut at both ends
of stay these in the shell to have
a nut on inside of combustion
chamber only.

Don't be taken that
C.C. stays at the back
of the boiler are not
sufficiently close of the
round so that full water
can be got upon the flat plate

Doubling plate
1/8" thick Rivets 6" pitch

H.P.R.
1.6.10



STEEL BOILER N° 1856

10280

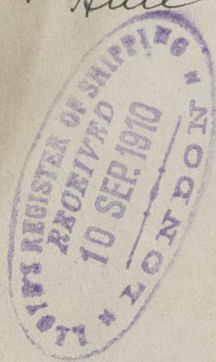
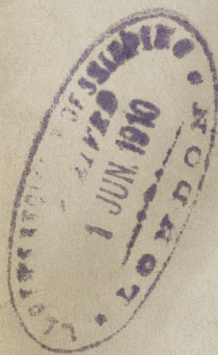
TITLE Steel Boiler
FOR WHOM Messrs. H. & W. Kelly
DATE 30/5/10
ORD 180/1856
IF MADE at Hull
1 inch = 1/1000

AMOS & SMITHS BOILER.

N^o 1856.

W.P. = 180 LBS

sp. Algeria
Hull Rph No. 23134



RETAIN



© 2020

Lloyd's Register
Foundation

W1289-0296