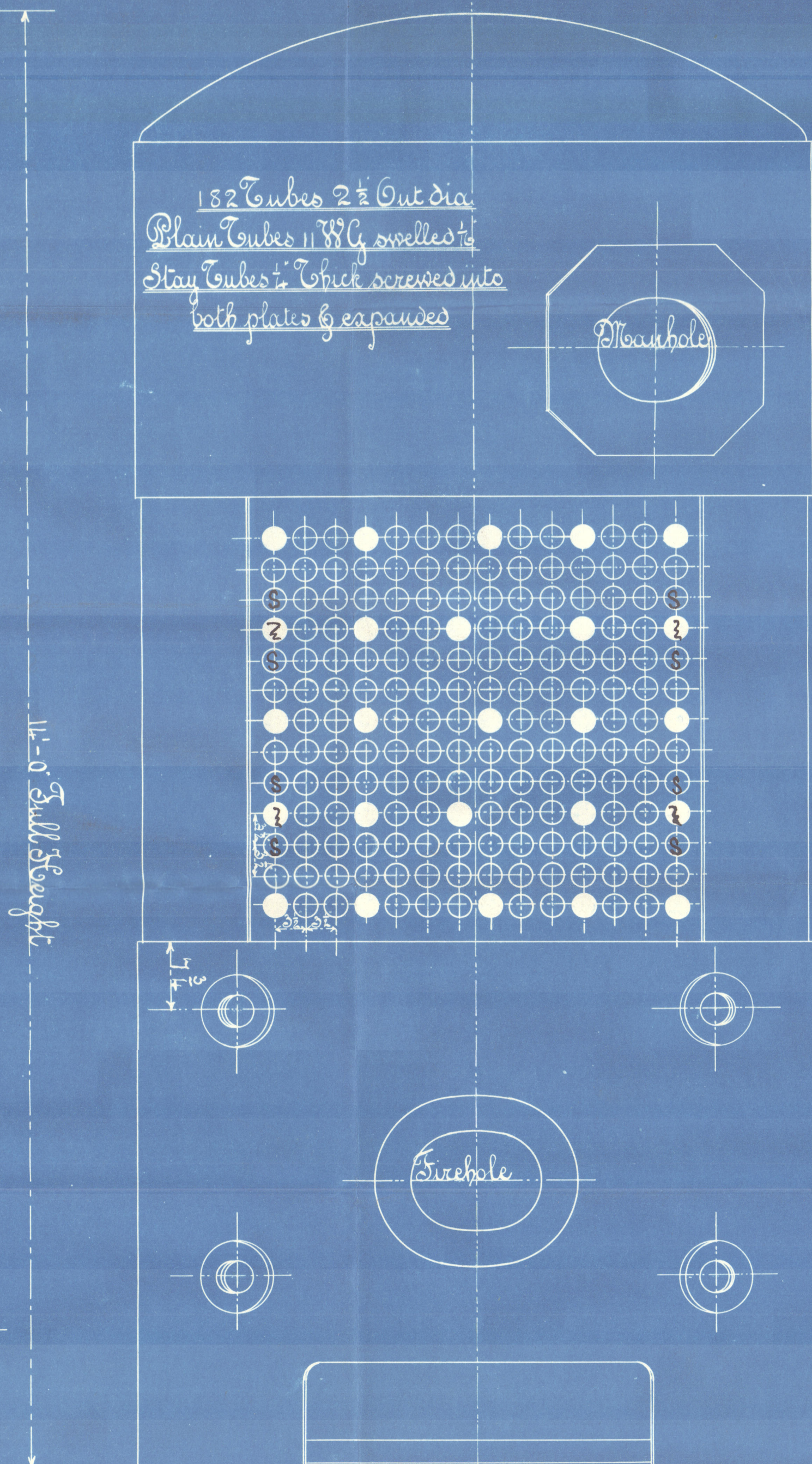


— Cleaning & Mudholes 3 1/2 x 5 —

— Stiffening Being 2 1/4 x 7/8 —

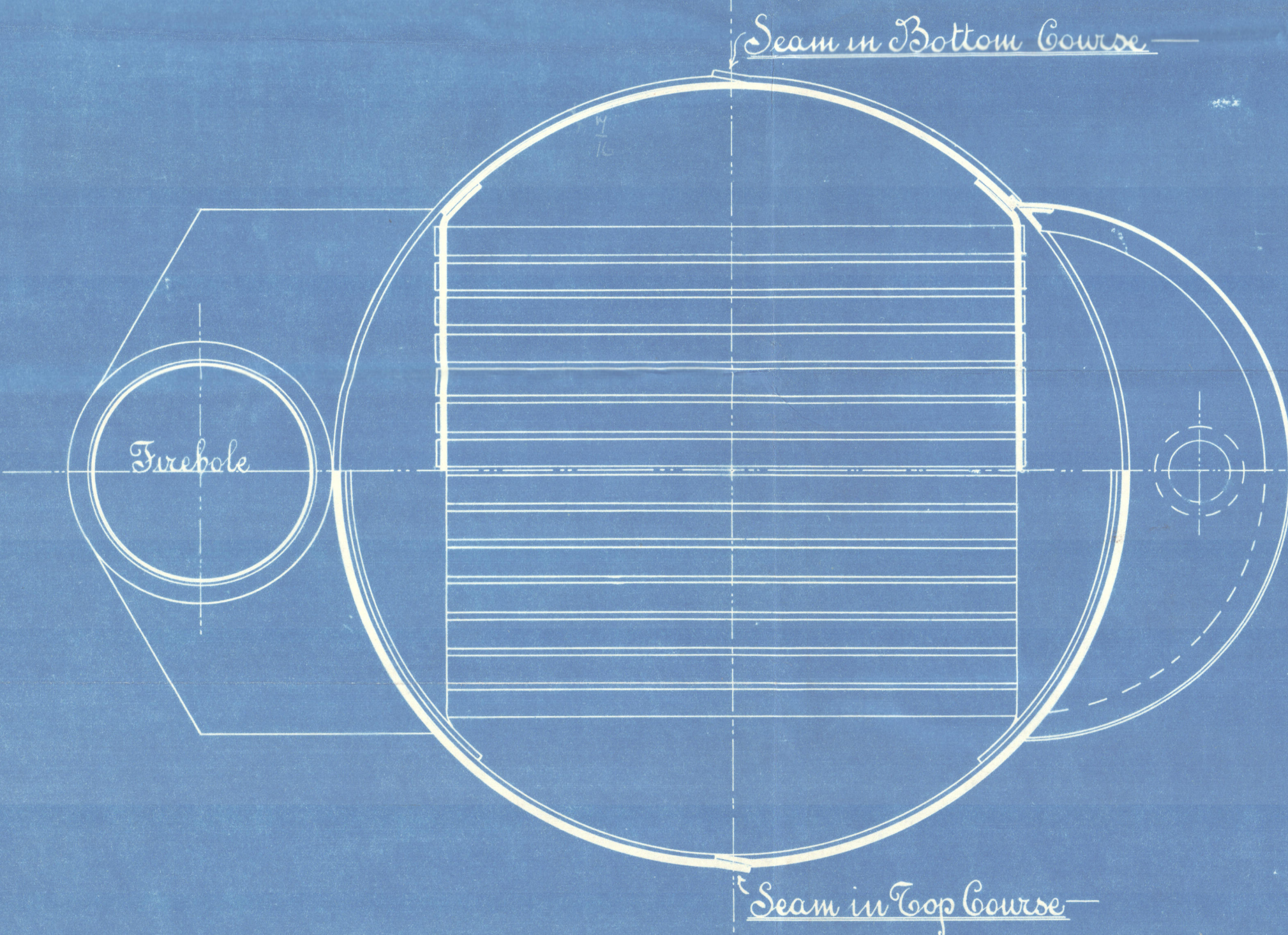


— Heating Surface 620 sq. ft. —

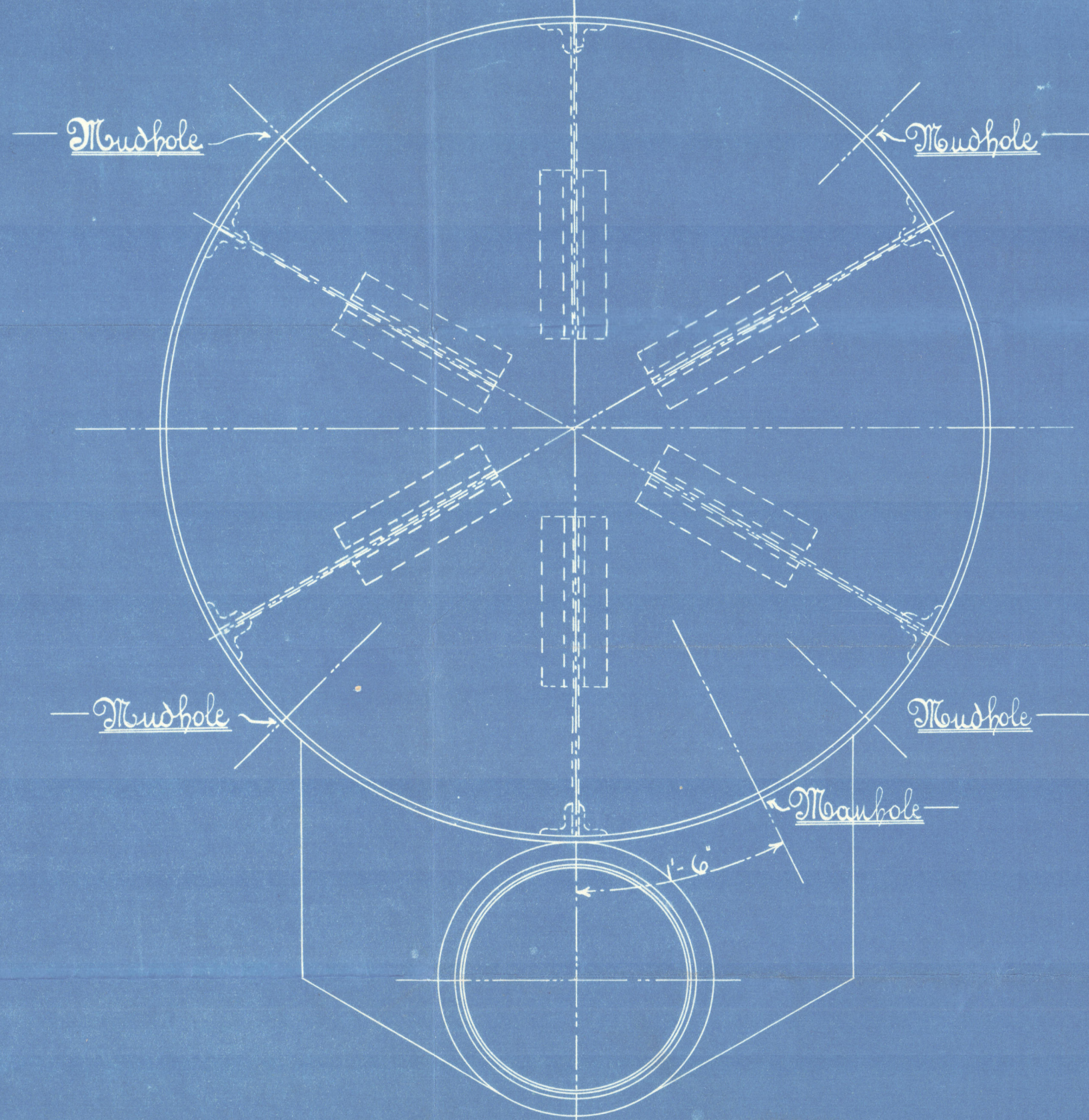
— Grate Area 23 sq. ft. —

— Plate 72.5 —  
— Steel 73.7 —

— 28 L. of Shell 40 c. —



— Seam in Top Course —



— Boiler No. 24240 —

— Improved Vertical Multitubular Boiler 14'-0" x 6'-6" —

— Dry Back Type —

— Working Pressure 80 lbs per sq. in. —

— Testing Pressure 160 lbs per sq. in. —

— Scale 1" = 1 Foot —

— Clynch Survey —

Long Seams of Shell Double Riveted 7/8" Holes 3 1/2" Pitch Lap 1" Drag

Circumf. Seams of Shell Single Riveted 7/8" Holes 3 1/2" Pitch 2" Lap

Firebox & Combustion Chamber Seams Single Riveted 1" Holes 2 1/2" Pitch 5" Lap

All plates M<sup>100</sup> John Spencer & Sons, Siemens Steel

Rivet Makers Messrs James Miller & Co. Glasgow

All Holes drilled

Shell plates 27-32 tons tensile

Box plates 26-30



TO... Lloyd's Engineer  
 Surveyor  
 RE... 14'-0" x 6'-6" Imp Ltd Boiler  
 FROM CLARKE CHAPMAN & CO LTD  
 DATE 9/2/05 TRANS NO. 4021

Clarke Chapman & Co  
 2424 d  
 80 lbs

40/2

Osbourne & Chapman & Co  
 S/S No. 124

S/Needwood

Ald: F.C. No. 22580



© 2020

Lloyd's Register  
 Foundation

W1288-0395