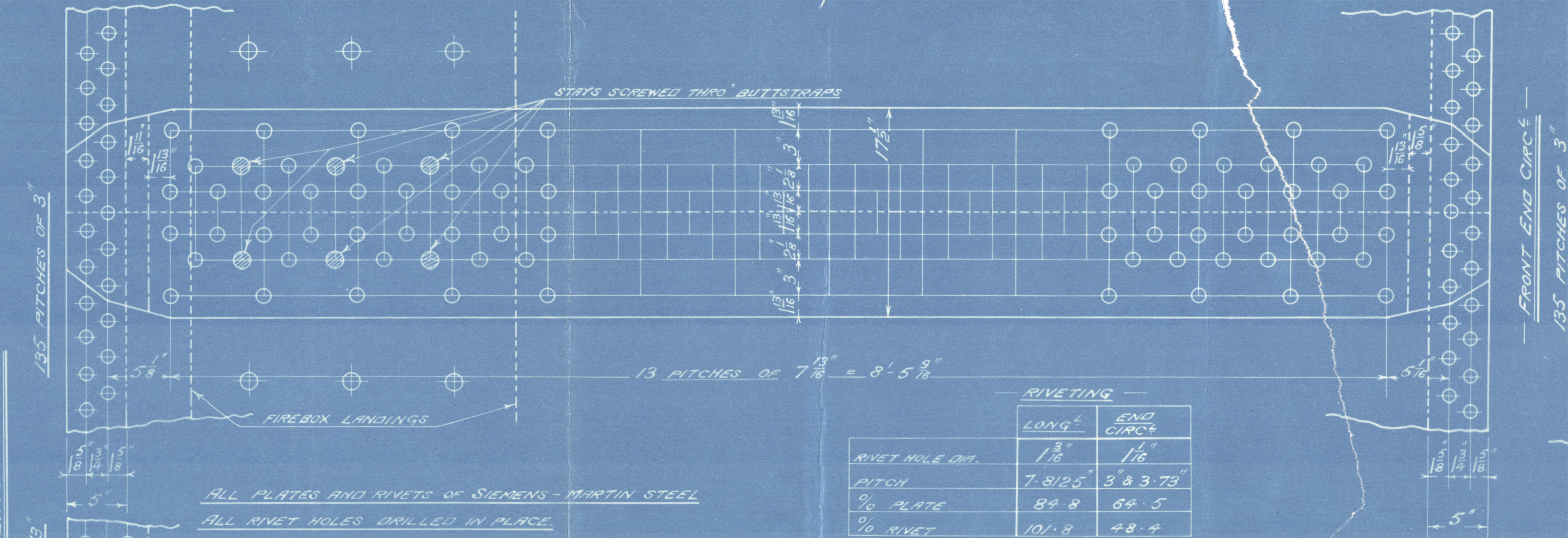


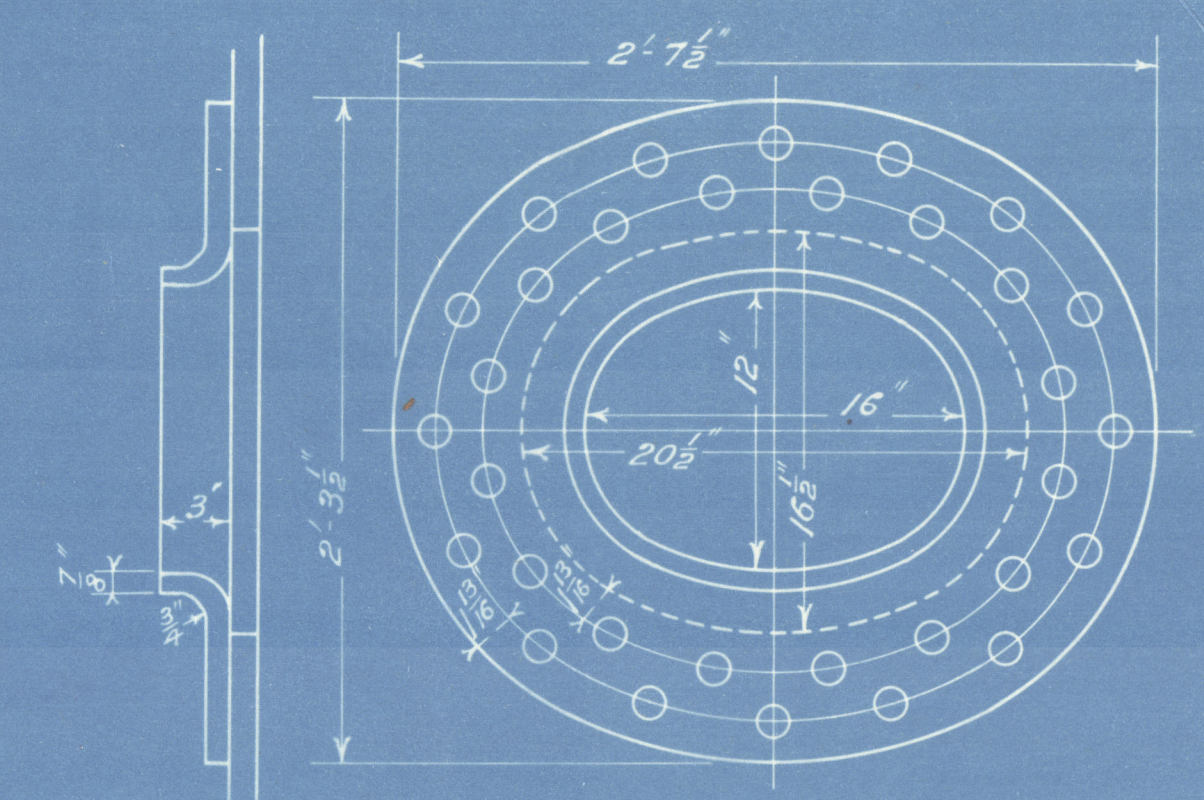
THICKNESS OF PLATES	
SHELL	1/2"
BUTTERFLIES (INNER)	3/16"
" (OUTER)	1/4"
GIRDERS	1/2"
COMB RING	1/2"
TOP ENDS (FRONT & BACK)	1/2"
BOTTOM END (FRONT)	3/8"
" (BACK)	3/8"
FRONT TUBE PLATE	5/8"
FIREBOX TUBE PLATE	3/8"
" (BACK)	3/8"
WASHERS	3/8"
BOTTOM	3/8"
FURNACES	3/8"

SURFACES ETC.	
TUBES	1962 #
FIREBOX TOP SIDES	207 "
" BACK	87 "
TUBE PLATE	58 "
FURNACES	151 "
TOTAL HEATING SURFACE	2465 #
GRATE AREA (5'6" BARS)	67.8 #
TUBE AREA	19.65
WATER	135 "
STEAM SPACE	335 #
GRATE AREA: HEATING SURFACE	1: 36.3
" TUBE	1: 28.9
" WATER	4.96: 1
" STEAM SPACE	1: 2.29
% BOILER ABOVE FIREBOX	1: 7.9
HEIGHT OF WATER	33.3
WEIGHT OF WATER	26.3 TONS

28/2/09

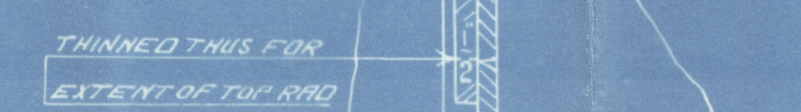
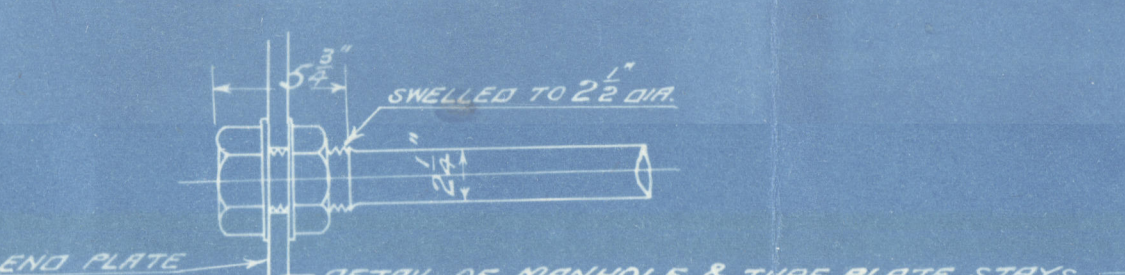
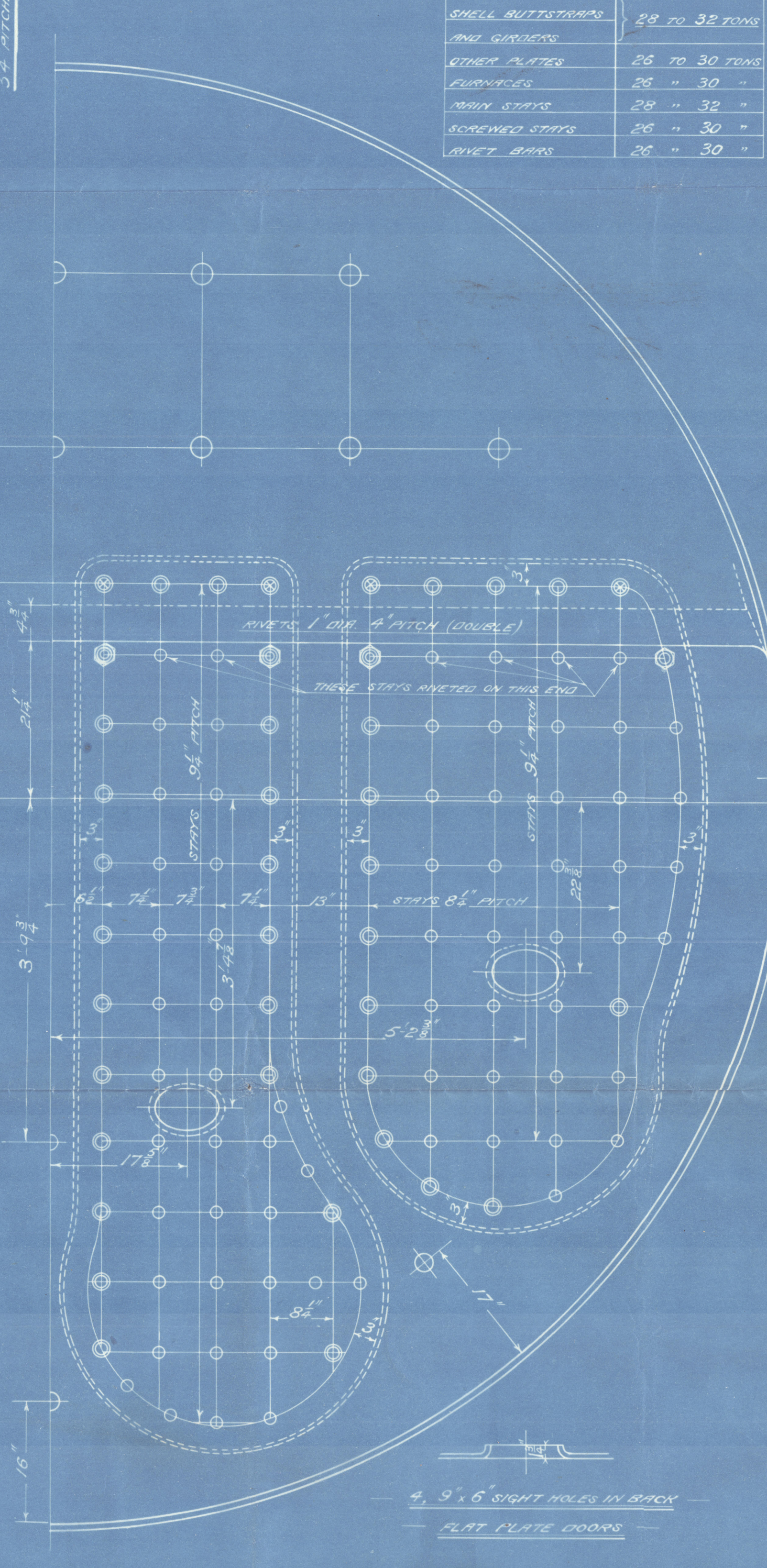
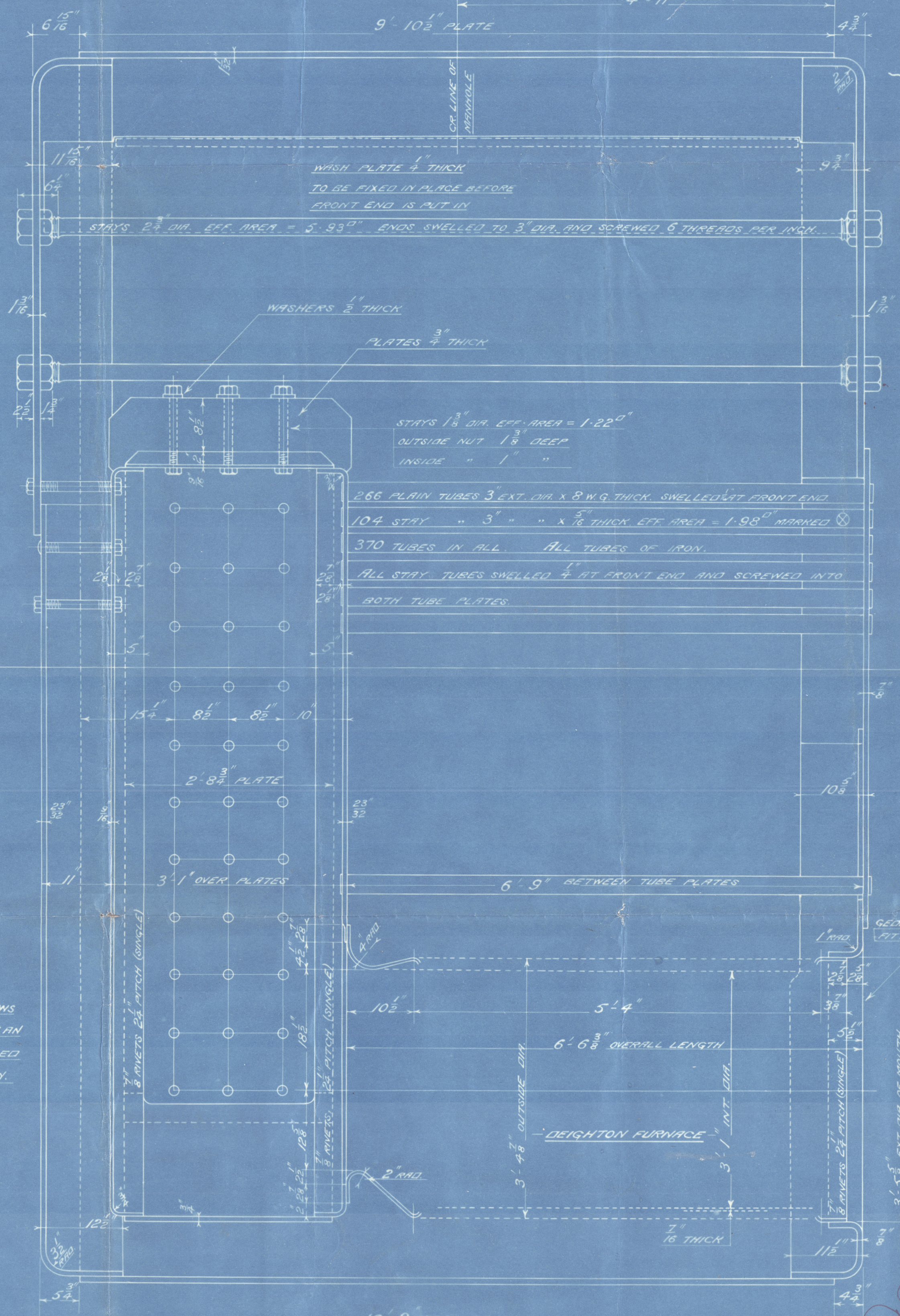
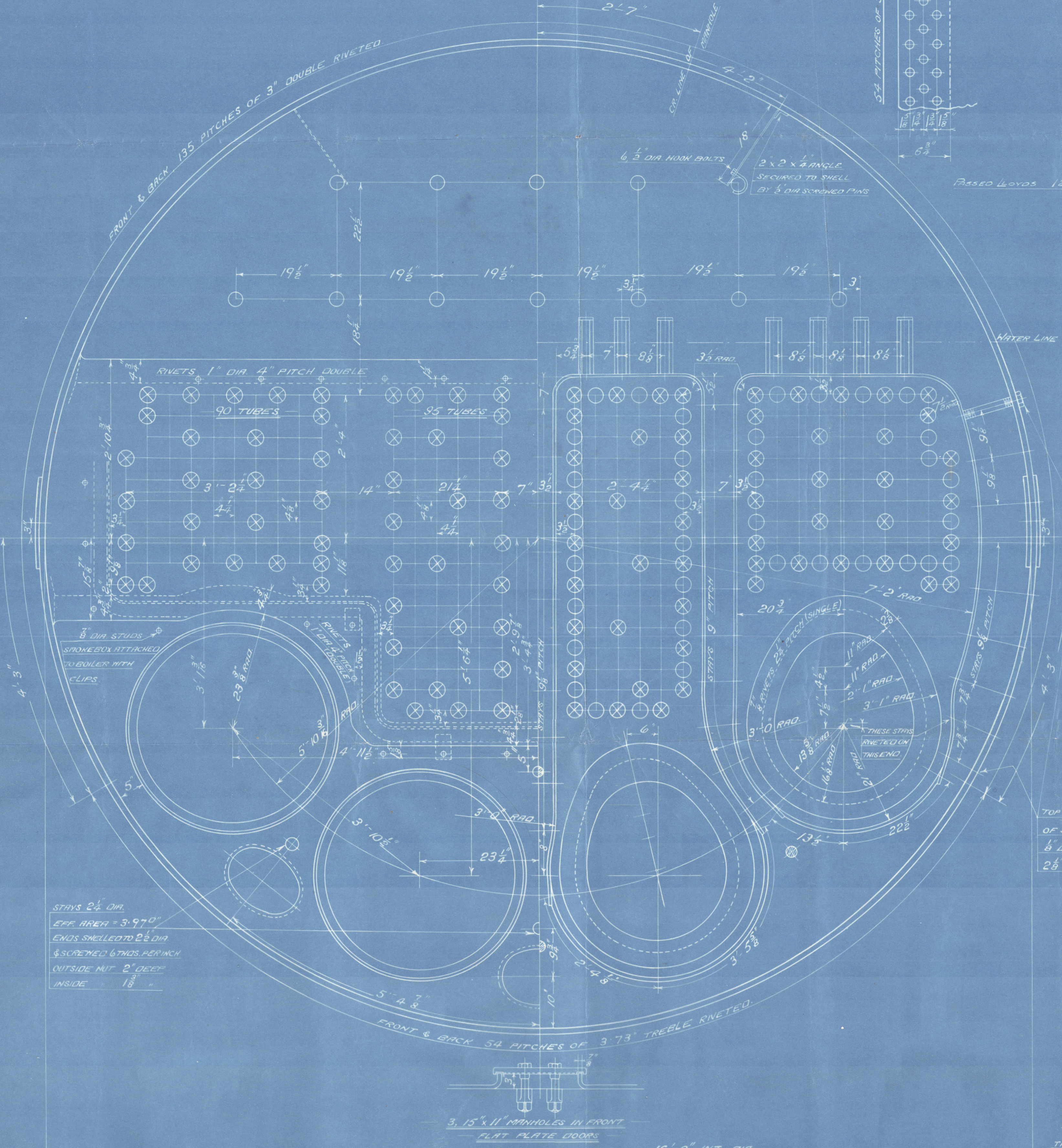


RIVETING	
LONG	END
RIVET HOLE DIA.	1 1/8"
PITCH	7.8/25"
% PLATE	89.8
% RIVET	101.8



RIVET HOLES 1 1/8" DIA. PLATE 1 1/2" THICK  
SHELL MAINHOLE COMPENSATING RING  
M<sup>c</sup>NEIL'S DOOR

LIMITS OF TENSILE STRENGTH	
SHELL BUTTERFLIES	28 TO 32 TONS
AND GIRDERS	28 TO 30 TONS
OTHER PLATES	28 " 30 "
FURNACES	28 " 32 "
MAIN STAYS	28 " 30 "
SCREWED STAYS	26 " 30 "
RIVET BARS	26 " 30 "



MAIN BOILER  
ONE OFF  
B. 115

WORKING PRESSURE = 140 LBS PER SQ. INCH.  
TO PASS LLOYD'S SURVEY  
SCALES, 1" & 1 1/2" = ONE FOOT.

28/2/09

FIREBOX STAYS	
POSITION	MARK
TOP	1/8"
SIDES AND BACK	1/8"
BACK (OUTER ROWS)	1/8"
" (TOP CORNERS)	1/8"

ALL STAYS SCREWED THRU BOTH PLATES AND NUT FITTED AT EACH END EXCEPT WHERE OTHERWISE STATED ON DRAWING.  
ALL NUTS 1" DEEP EXCEPT ON GIRDER TOPS.

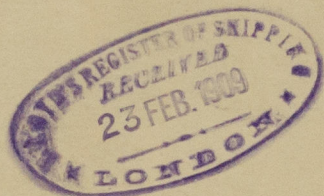
OT 11159 2020  
Register  
TRACED 8<sup>th</sup> FEB 1903  
W1285-0216



D. ROWAN & Co

BOILER B115, AMENDED PLAN

---



GLASGOW Report No. 27917

---

S.S. Balnuel II

RETAIN

W1285-0216<sup>2</sup>/<sub>2</sub>



© 2020

Lloyd's Register  
Foundation

From DAVID ROWAN & CO., GLASGOW.

ENCLOSURE

FOR

*Lloyds Surveyors.*

W1285-0216 1/2