

MIDSHIP SECTION.

S.S. N^o 66.

DIMENSIONS:- 185'-0" B.P. x 27'-9" B.M.^{LD} x 13'-7" D.M.^{LD}

SCALE 1/2" = ONE FOOT.

TO CLASS 100 A.1. AT LLOYDS.

Raised Quarter Deck, Bridge, and Top Gallant Forecastle.

Equipment:

2	Bower Anchors	16 3/4 cwt. stockless	Coll ^{rs} weight
1	Stream Anchor	4 3/4 ... ex stock	48 cwt.
1	Bridge	2 1/4 ...	
210	Fathoms	1 1/16 stud chain cable.	min. weight 168-0-0
60	...	1 1/16 stream chain or 3" steel wire	
75	...	8 1/2 hump towline or 2 3/4 ...	
90	...	6" hawser or 2 1/2 wire (steel)	owners consent if steel wire
90	...	4" warp. or 3 1/2 wire	

Proportions.

Breadths to Length
Depths ...

6:88
12:98
with 1/2 inch

90.7
1000

suppl post
p. 285

Bulwark in Mill about 7-0 high
Stays generally similar to Quarter
Deck Bulwark.

Clanged Brackets 3 frame
spaces apart in way of
Main and Quarter Decks.

Moulded Depth 13'-7"

28.12.08

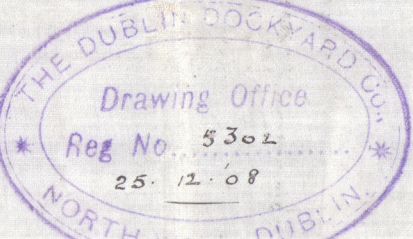
Erections

Forecastle	30.0 x 8.5 x 1 1/2	=	382.50
Bridge	7.33 x 7.0 x 1 1/2	=	76.96
R.Q. Deck	100.83 x 3.75 x 2	=	756.22
Total			1215.68

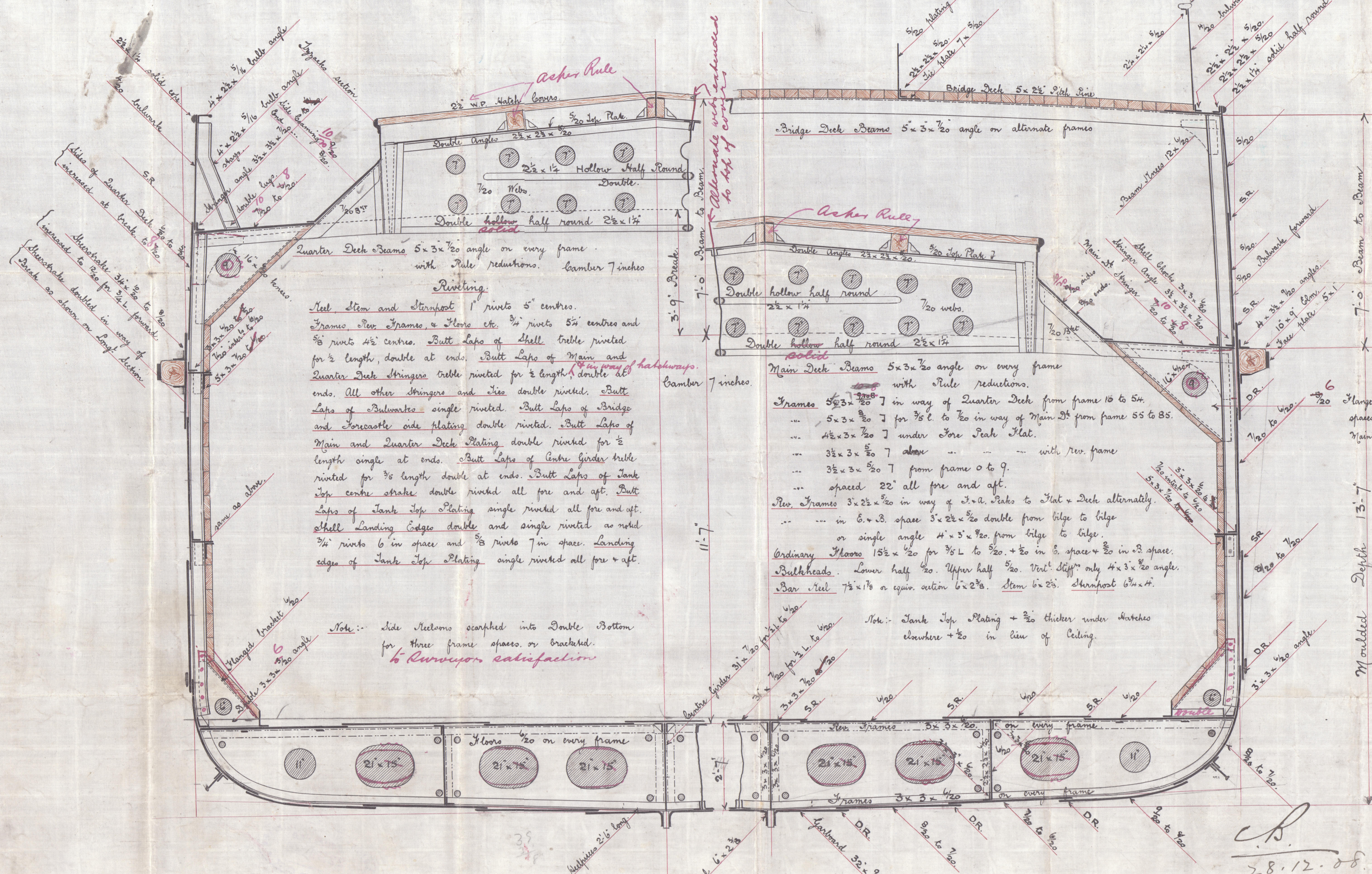
Numerals

1/2	Girth	=	25.83
1/2	Breadth	=	13.87
	Depth	=	14.16
1 1/2	N ^o	=	53.86 x 183.88 = 9903 = 2 nd N ^o
	+ Erections	=	1215
	11118	=	Equipt N ^o

29.12.08
21.1.09
28.2.09
18.3.09
13.4.09
15.5.09



Top Gallant Forecastle 8'-6" above Main Deck (beam to beam)
Stringer Plate 20 x 5/20
Angle 2 1/2 x 2 1/2 x 5/20
Wood Deck 5 x 2 1/2 P. Pine at sides.
10 x 3 P. Pine in centre.



Reel Stem and Sternpost 1" rivets 5" centres.
Frames Rev. Frames & Floor etc. 3/4" rivets 5 1/2" centres and 5/8" rivets 4 1/2" centres. Butt Laps of Shell treble riveted for 1/2 length, double at ends. Butt Laps of Main and Quarter Deck Stringers treble riveted for 1/2 length, double at ends. All other stringers and Ls double riveted. Butt Laps of Bulwarks single riveted. Butt Laps of Bridge and Forecastle side plating double riveted. Butt Laps of Main and Quarter Deck Plating double riveted for 1/2 length single at ends. Butt Laps of Centre Girder treble riveted for 3/4 length double at ends. Butt Laps of Tank Top centre strakes double riveted all fore and aft. Butt Laps of Tank Top Plating single riveted all fore and aft. Shell Landing Edges double and single riveted as noted. 3/4" rivets 6 in space and 5/8" rivets 7 in space. Landing edges of Tank Top Plating single riveted all fore & aft.

Note:- Side Reeloms scarphed into Double Bottom for three frame spaces, or braced.
to Runways satisfaction

Main Deck Beams 5 x 3 x 1/2 angle on every frame with Rule reductions.
Frames 5 1/2 x 3 x 1/2 in way of Quarter Deck from frame 10 to 54.
... 5 x 3 x 1/2 in way of Main Deck from frame 55 to 85.
... 4 1/2 x 3 x 1/2 under Fore Peak Plat.
... 3 1/2 x 3 x 1/2 above ... with Rev. frame
... 3 1/2 x 3 x 1/2 from frame 0 to 9.
... spaced 22" all fore and aft.
Rev. Frames 3 x 2 1/2 x 1/2 in way of 3rd & 4th Decks to 1st & 2nd Decks alternately.
... in 6 x 3 space 5 x 2 1/2 x 1/2 double from bilge to bilge or single angle 4 x 5 x 1/2 from bilge to bilge.
Ordinary Floors 15 1/2 x 1/2 for 3/4 L to 5/20 + 5/20 in 6 space + 5/20 in 11 space.
Bulkheads Lower half 5/20. Upper half 5/20. Vert. Stiff only 4 x 5 x 1/2 angle.
Bar. Reel 7 1/2 x 1/2 or equiv. action 6 x 2 1/2. Stem 6 x 2 1/2. Sternpost 6 1/2 x 4.

Note:- Tank Top Plating + 2/20 thicker under hatches elsewhere + 2/20 in line of Ceiling.

Section in way of Quarter Deck.

Section in way of Main Deck.

0-0-211

DUBLIN.

709.
Jmw.

REPORT OF THE
COMMISSIONER OF THE
LAND OFFICE
OF THE STATE OF NEW YORK
FOR THE YEAR 1900
© 2020

Lloyd's Register
Foundation

W1285-0215