

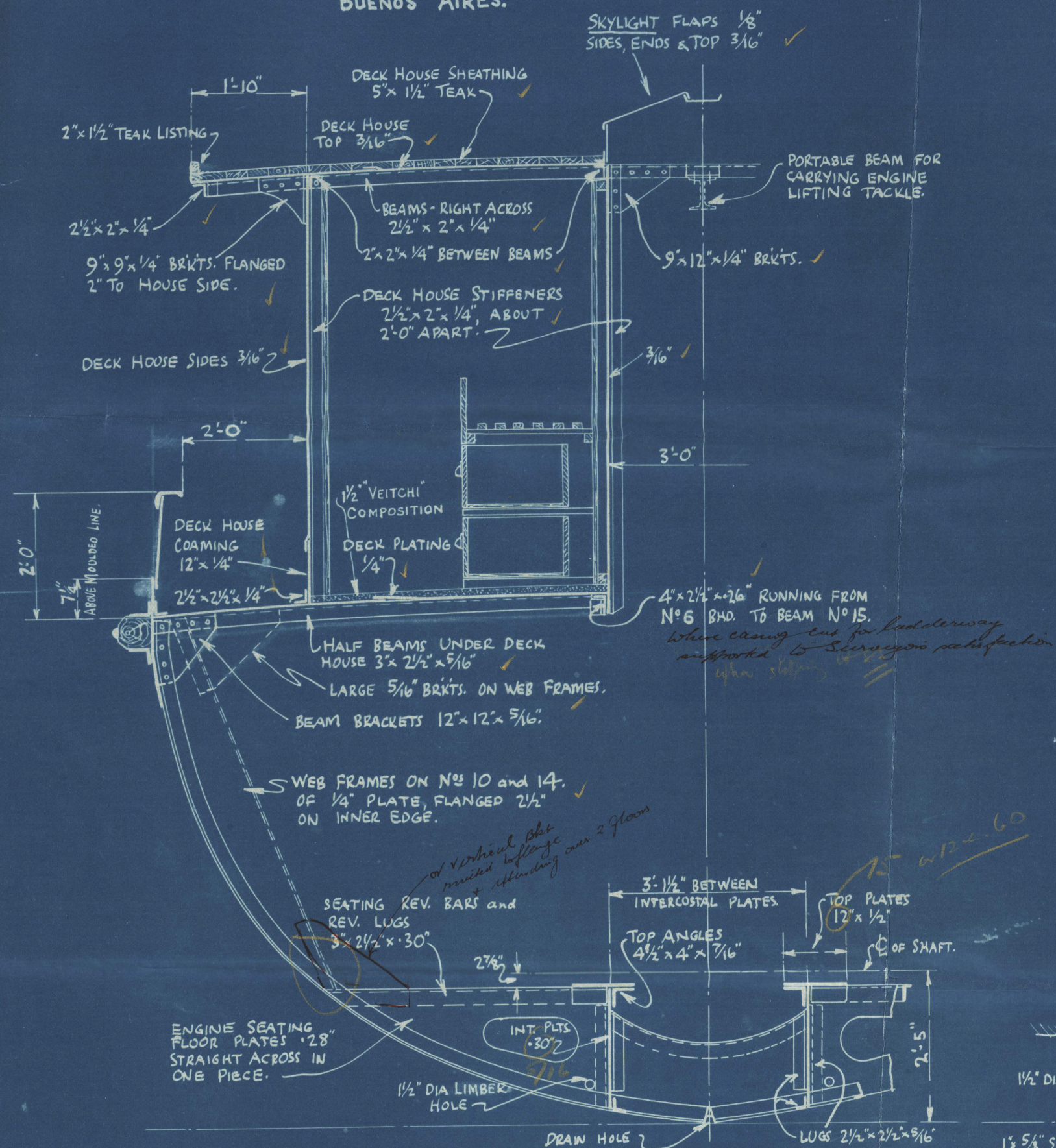
SECTIONS - SHIP NO 1386.

PARTICULARS.

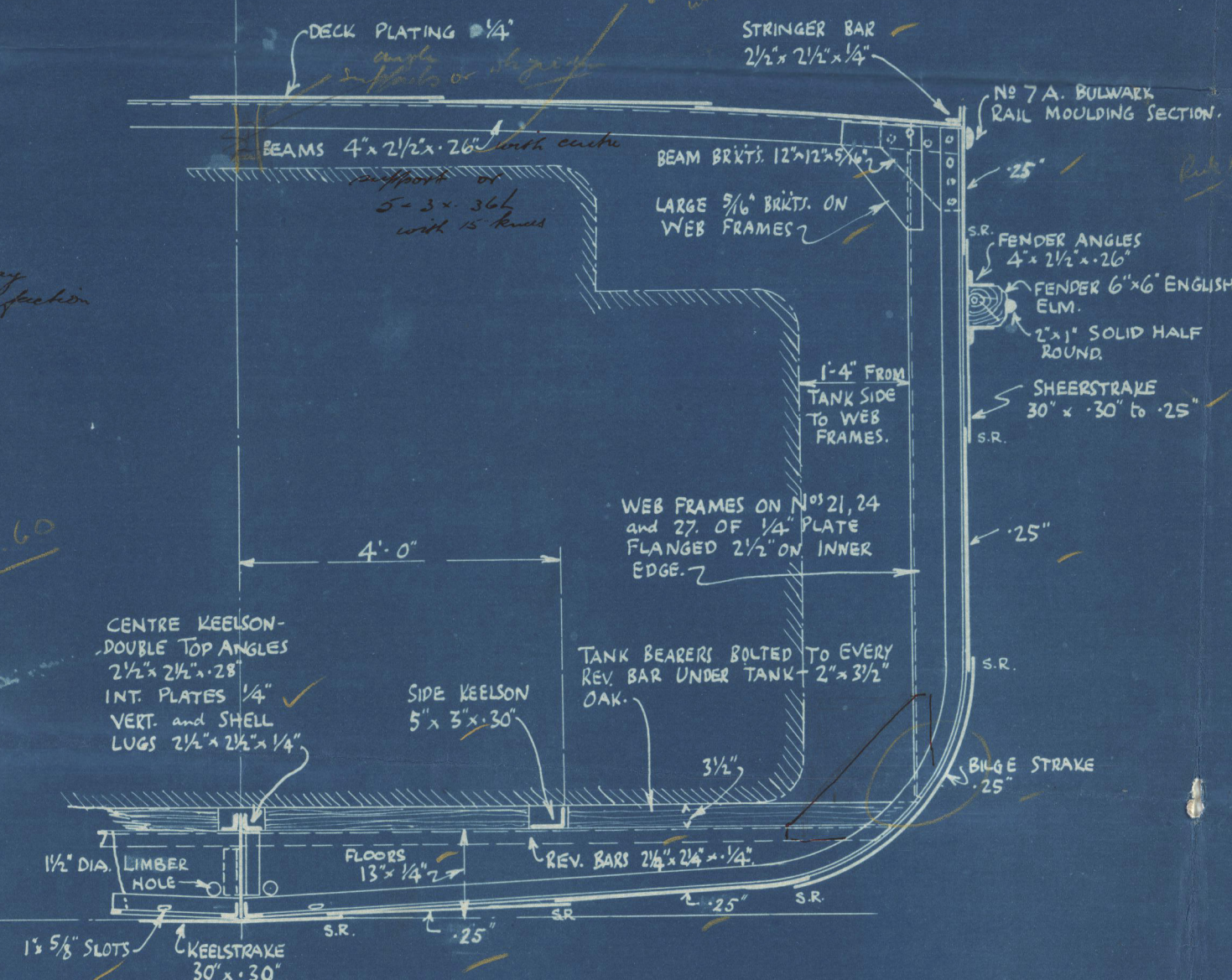
LENGTH O.A. 91' 0"
 LENGTH B.P. 85' 10"
 BREADTH MLD. 18' 0"
 DEPTH MLD. 7' 8"
 DRAFT LOADED 6' 3"
 POWER 120 B.H.P. 2 Cyl. B.30.M.20 BOLINDER.

Scale - $\frac{3}{4}$ " To 1 Foot.

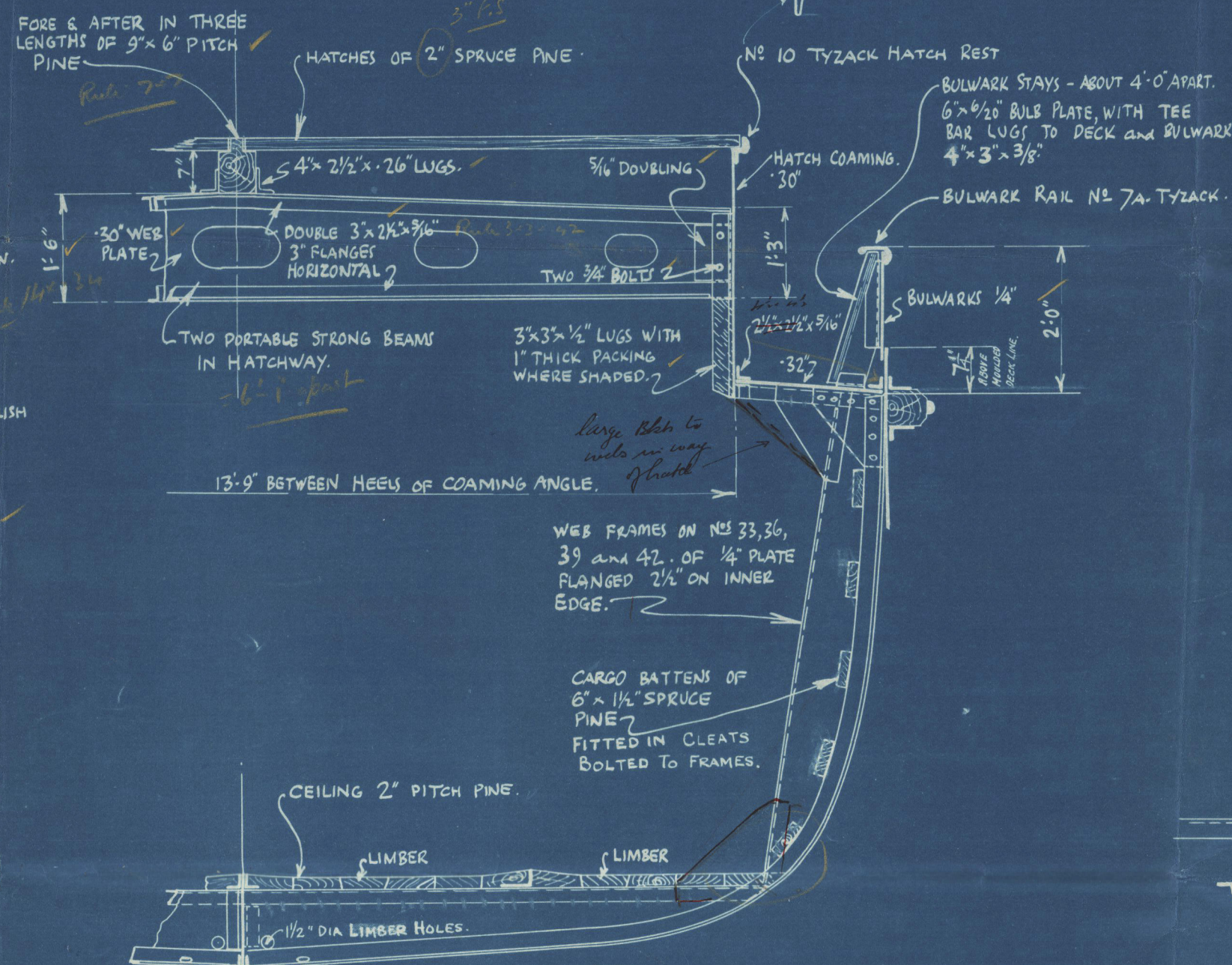
CLASS:- LLOYDS. 'A' BARGE CARRYING PETROLEUM IN PORTABLE TANKS
 FOR RIVER & HARBOUR SERVICE ONLY. TRADING BETWEEN CAMPANA &
 BUENOS AIRES.



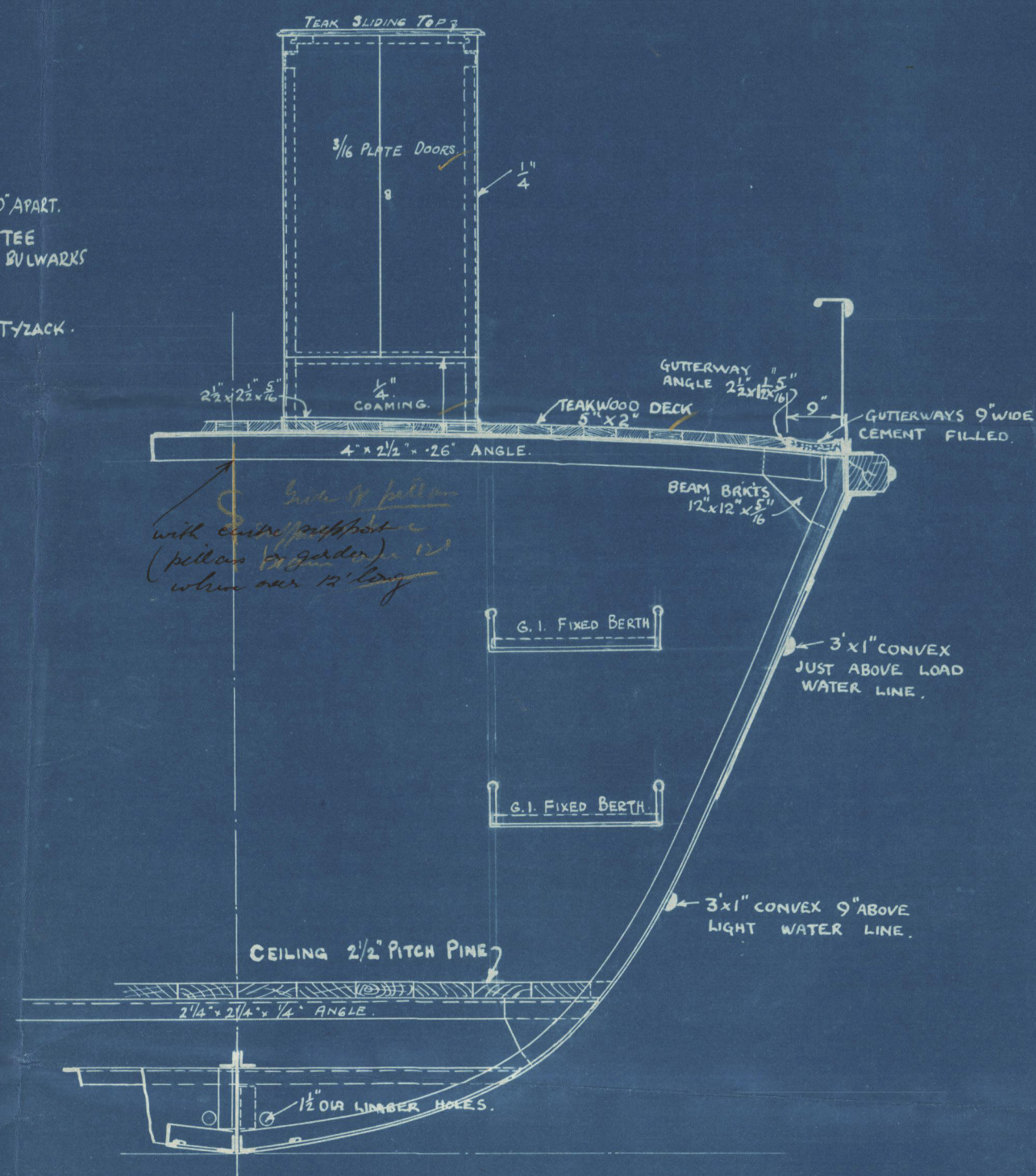
SECTION THRO' ENGINE ROOM (No 11)
 LOOKING AFT.



SECTION THRO' TANK SPACE (No 24)
 LOOKING AFT.



SECTION THRO' CARGO HOLD (No 36)
 LOOKING FOR'D.



SECTION THRO' CREW SPACE (No 46)
 LOOKING FOR'D.

LIST OF SCANTLINGS.

STEM 5" x 1" STERN FRAME 5" x 1 1/4"
 RUDDER STOCK 3" DIA. PLATE 5/8" *plan to be submitted*
 FRAMES 3" x 2 1/2" x 5/16" THROUGHOUT (Except Bhd's) SPACED 20" APART GENERALLY and 16" IN ENGINE ROOM.
 WEB FRAMES 1/4" PLT. ON Nos 10, 14, 21, 24, 27, 33, 36, 39, 42, & 51 - See SECTIONS BELOW.
 REVERSE BARS (Except in Motor Seating) 2 1/4" x 2 1/4" x 1/4"
 FLOORS 13" x 1/4" (Except in Motor Seating).
 BEAMS ON EVERY FRAME 4" x 2 1/2" x 2/6" (Except Bhd's) *with rubber in flanges between beams & stringer (see note below on wing of beam)*
 HALF BEAMS ON EVERY FRAME 2 1/2" x 2 1/2" x 5/16" and 3" x 2 1/2" x 5/16" UNDER DECK HOUSE.
 BEAM BRACKETS 12" x 12" x 5/16" - LARGE 5/16" BRACKETS ON WEB FRAMES.
 CENTRE KEELSON FROM FRAME Nos 18 TO 49. TOP ANGLES 2 1/2" x 2 1/2" x 28", INTERCOSTAL PLATES 25" VERTICAL and SHELL LUGS 2 1/2" x 2 1/2" x 1/4".
 SIDE KEELSON FROM FRAME Nos 18 TO 49 5" x 3" x 30" ANGLE.
 STRINGER BAR 2 1/2" x 2 1/2" x 1/4".
 OILTIGHT BULKHEADS Nos 18, 30 and 44. BOUNDARY BARS 4" x 4" x 3/2" STIFFENERS 3" x 2 1/2" x 1/4" SPACED 24" APART, PLATING 1/4".
 WATERTIGHT BHD Nos 6 and 49. BOUNDARY BARS 2 1/2" x 2 1/2" x 1/4", STIFFENERS 3" x 2 1/2" x 1/4" SPACED 24" APART ON No 49 and 30" APART ON No 6. PLATING 4/20".
 SHELL PLATING. KEELSTRAKE 30" x 30" SHEERSTRAKE 30" x 30" for 1/2" L TO 25" at ENDS. REST OF SHELL and BULKHEADS 1/4".
 DECK PLATING. GENERALLY 1/4" WITH 3/2" STRINGER ALONGSIDE CARGO HATCH. DECK TO BE DOUBLED UNDER WINCH.
 MOTOR SEATING SCANTLINGS - SEE SECTION BELOW.

EQUIPMENT
 2-2 1/2 CWT STOCKLESS ANCHORS
 1-3/4 CWT STREAM ANCHOR
 90 FATHOMS 3/8 SHORT LINK CABLE
 60 FATHOMS 1/2 F.S.W. ROPE WITH REEL.
 40 FATHOMS 3/4 MANILLA
 40 FATHOMS 2 1/2 MANILLA
 20 FATHOMS RATLINE.

CLASS: "Lloyds" 'A' Barge Carrying Petroleum in Portable Tanks for River & Harbour Service only.
 APPROVED BY LLOYDS.
 APPROVED PLAN SENT TO SURVEYOR.

DRAWN BY S.H.Z.
 CHECKED BY H.
 DATE: 27-5-30
 PLAN No 19648.
 JAMES POLLOCK, SONS & CO. LTD.,
 SHIPBUILDERS & ENGINEERS,
 3, LLOYDS AVENUE,
 LONDON, E.C.3.

James Pollock.

1386

Sectors

~~GEN. BOX NO~~ 290

I T A C H III

RETAIN

W1284-0016



Lloyd's Register
Foundation