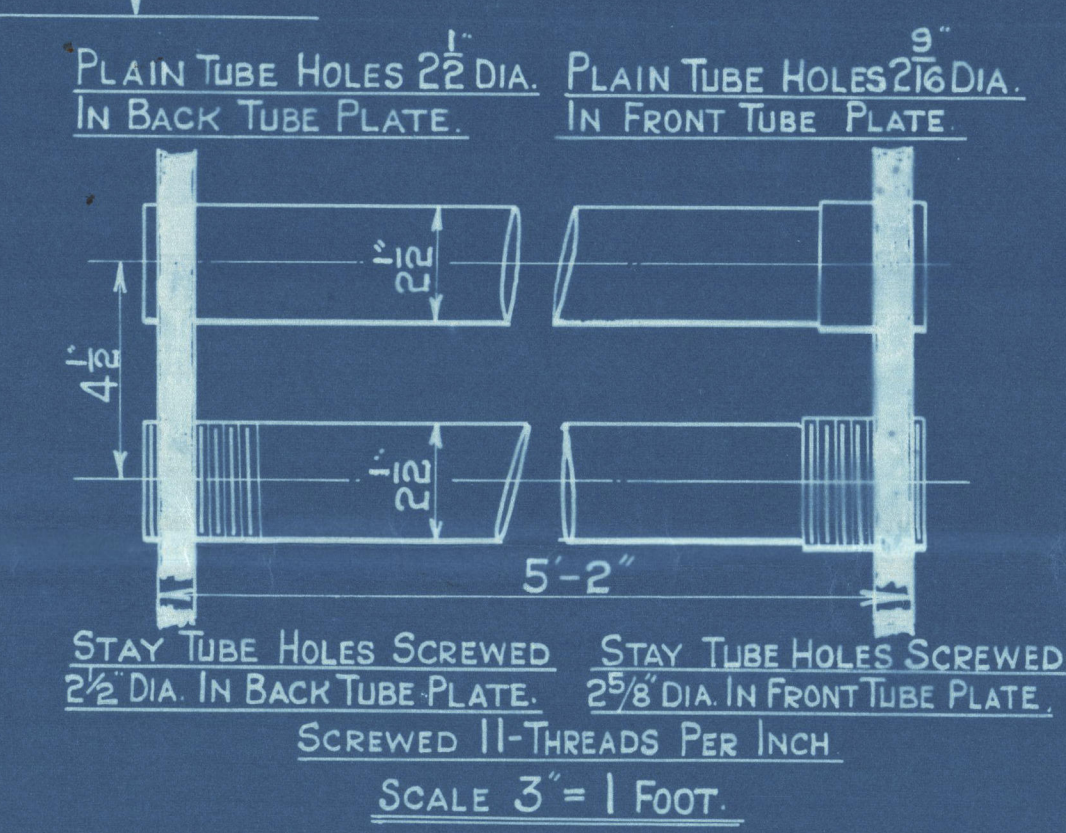
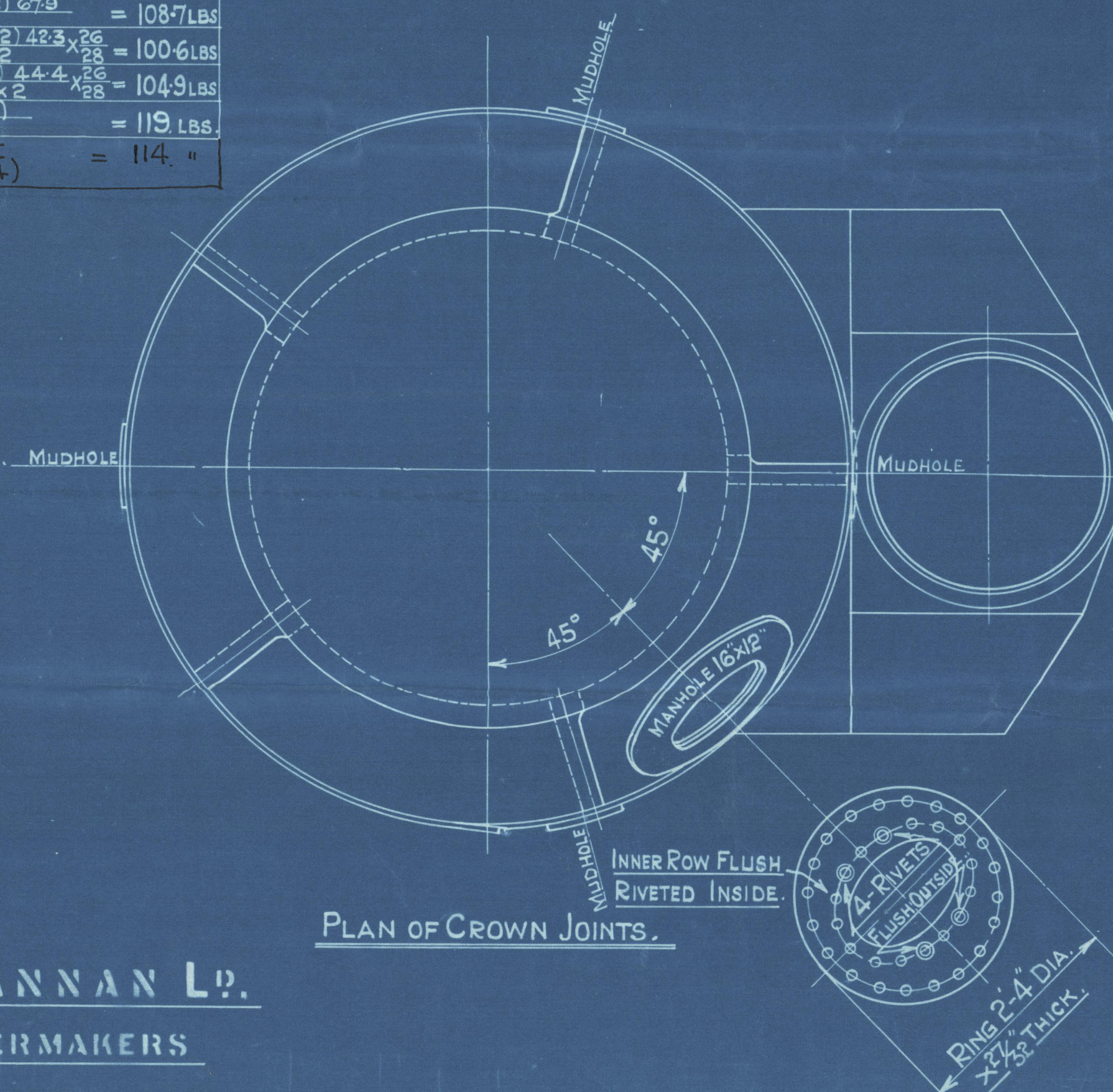
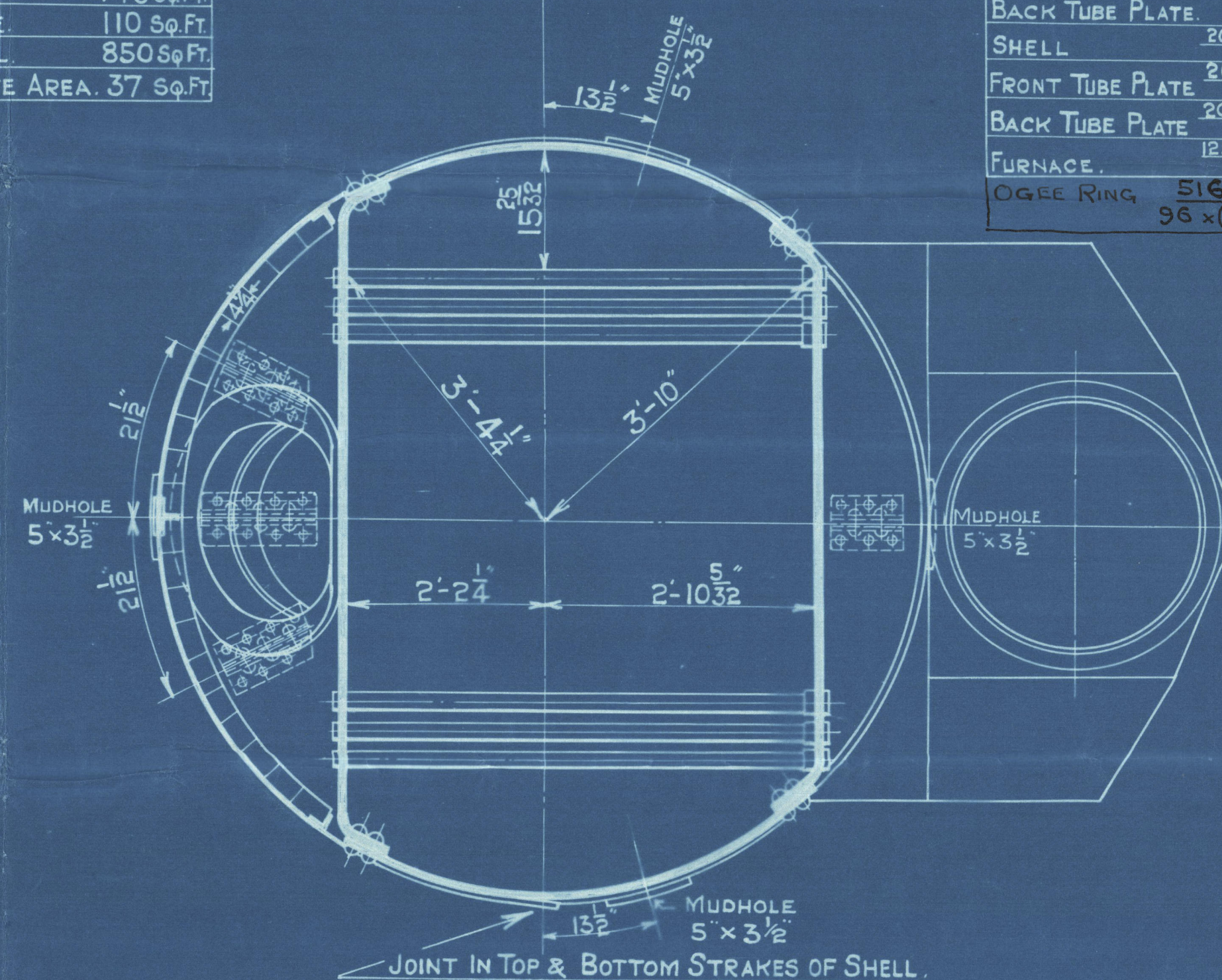


27/3/16

SCALE 1" = 1 FOOT



	LLOYDS.	
PLATE	$3.02 - 3.6875$	$\times 100 = 67.9\%$
	3.02	
RIVETS	$2 \times .72708285$	$= 69.4\%$
	$3.04 \times .55375$	
FRONT TUBE PLATE.	$4.5 - 2.5375$	$\times 100 = 42.3\%$
	4.5	
BACK TUBE PLATE.	$4.5 - 2.5$	$\times 100 = 44.4\%$
	4.5	
SHELL	$20.5 (9.5 - 2) \frac{67.9}{85}$	$= 108.7 \text{ LB.}$
	20.5	
FRONT TUBE PLATE	$20.5 (1.2 - 2) \frac{44.4}{85}$	$= 100.6 \text{ LB.}$
	20.5	
BACK TUBE PLATE	$20.5 (1.2 - 2) \frac{44.4}{85}$	$= 104.9 \text{ LB.}$
	20.5	
FURNACE.	$1250 (10 - 2) \frac{84}{84}$	$= 119 \text{ LBS.}$
	84	
OGEE RING.	516×162	
	$96 \times (96 - 84)$	$= 114 "$



PLATES NOT EXPOSED TO FLAME OR FLANGED	28 TO 32 TONS.
PLATES EXPOSED TO FLAME OR FLANGED EXCEPT FURNACE CROWN	26 TO 30 TONS.
FURNACE CROWN	26 TO 29 TONS.

DRAWING N°11122

COCHRAN & CO., ANNAN, LD.

Boiler No. 4042

Drawing No. 11122

100 lbs

For Tanker "Lis"



13495

GLASGOW REPORT No. B6194.



RETAIN

Lloyd's Register
Foundation

W1280-0039 1/2

COCHRAN & CO., ANNAN, Ltd.

Enclosure

FOR

Messrs

Lloyd's Register

2/2