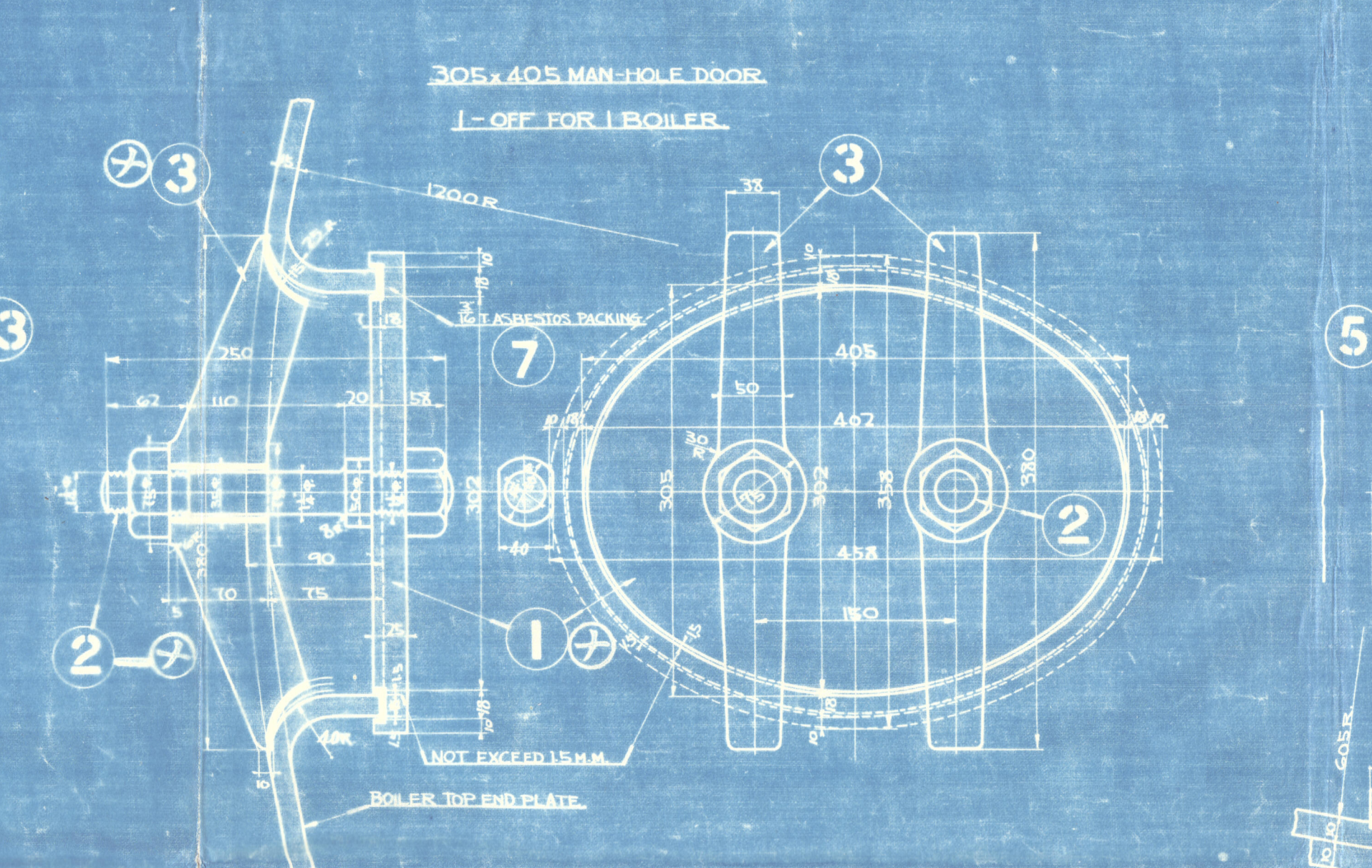
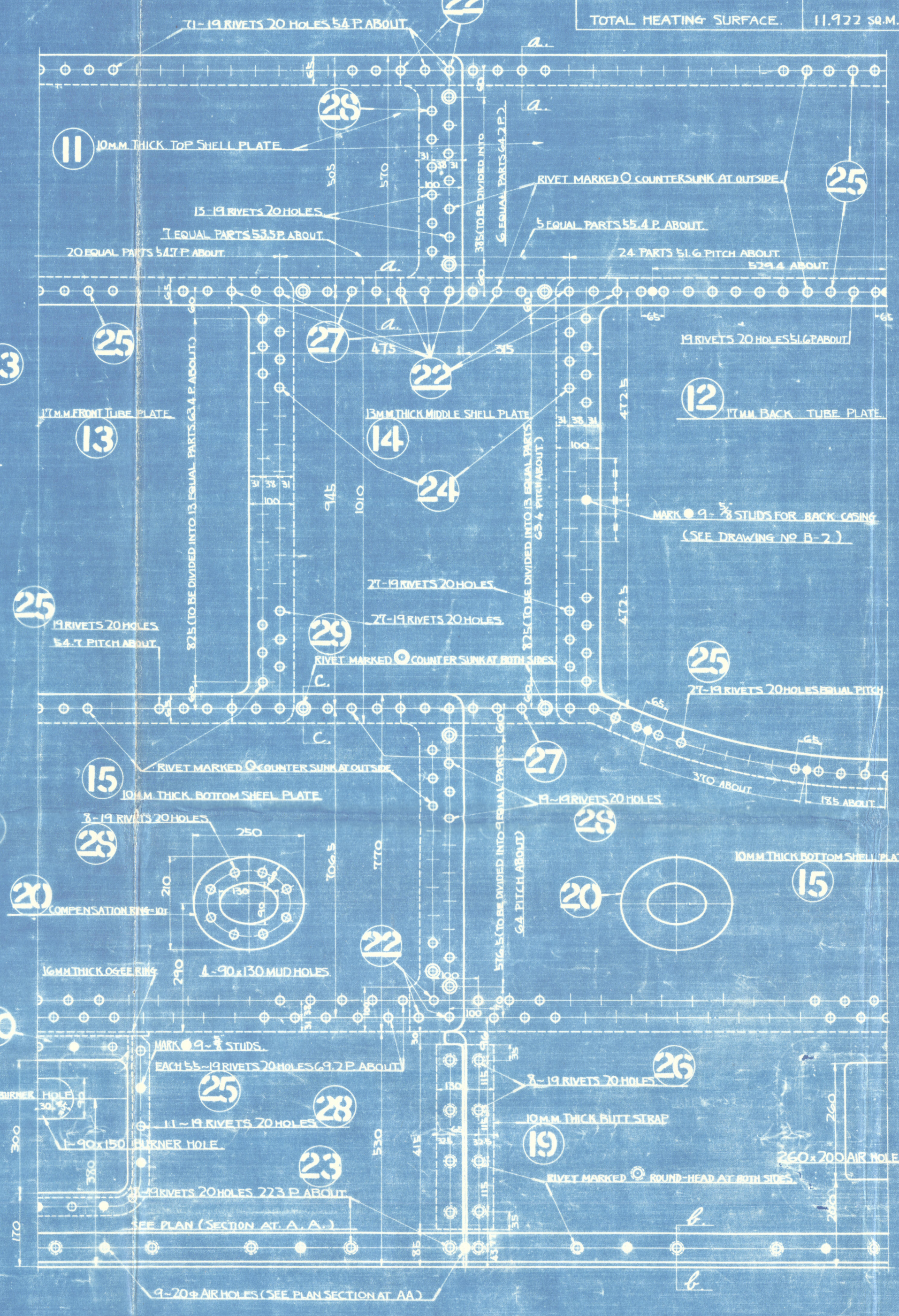
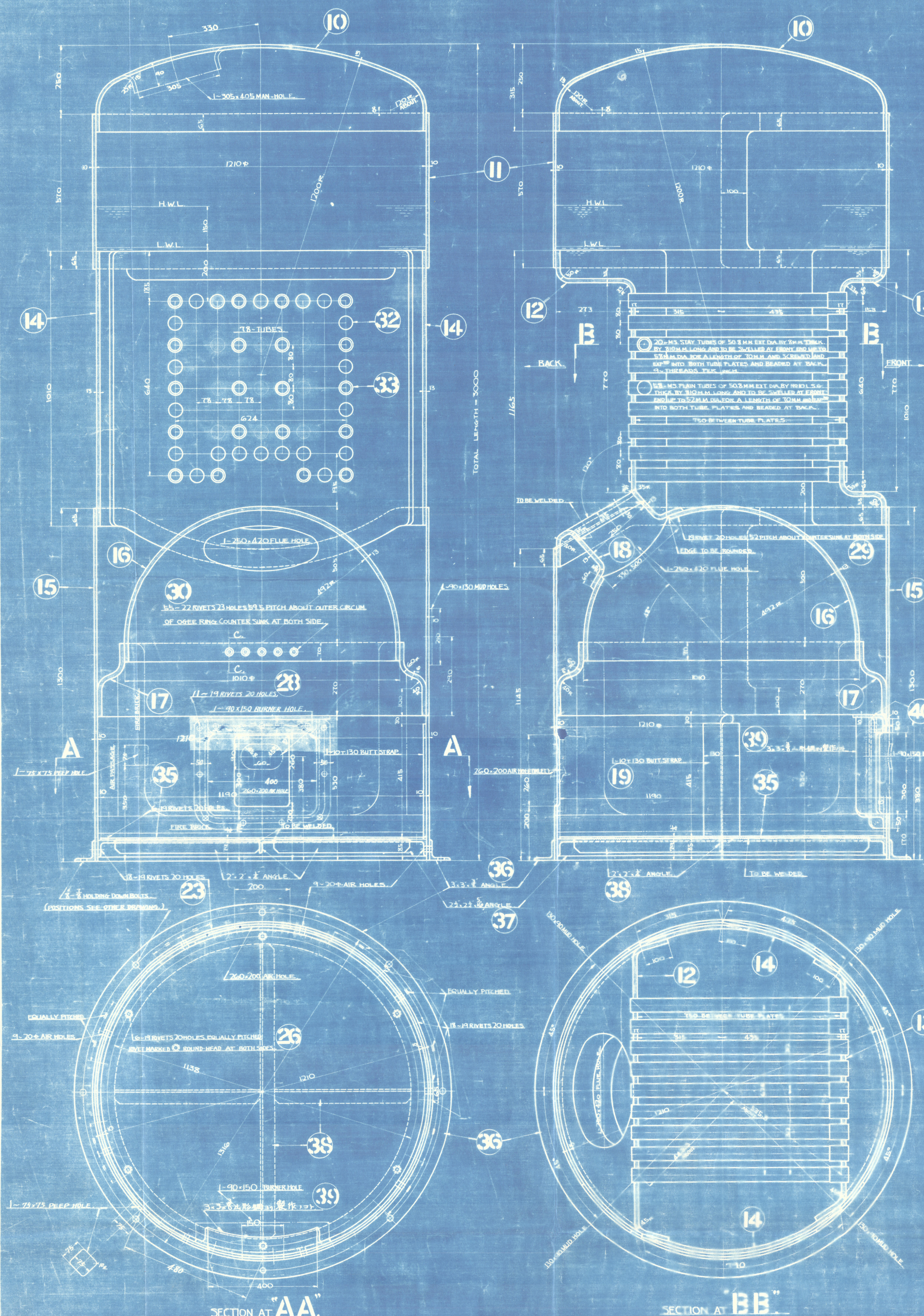
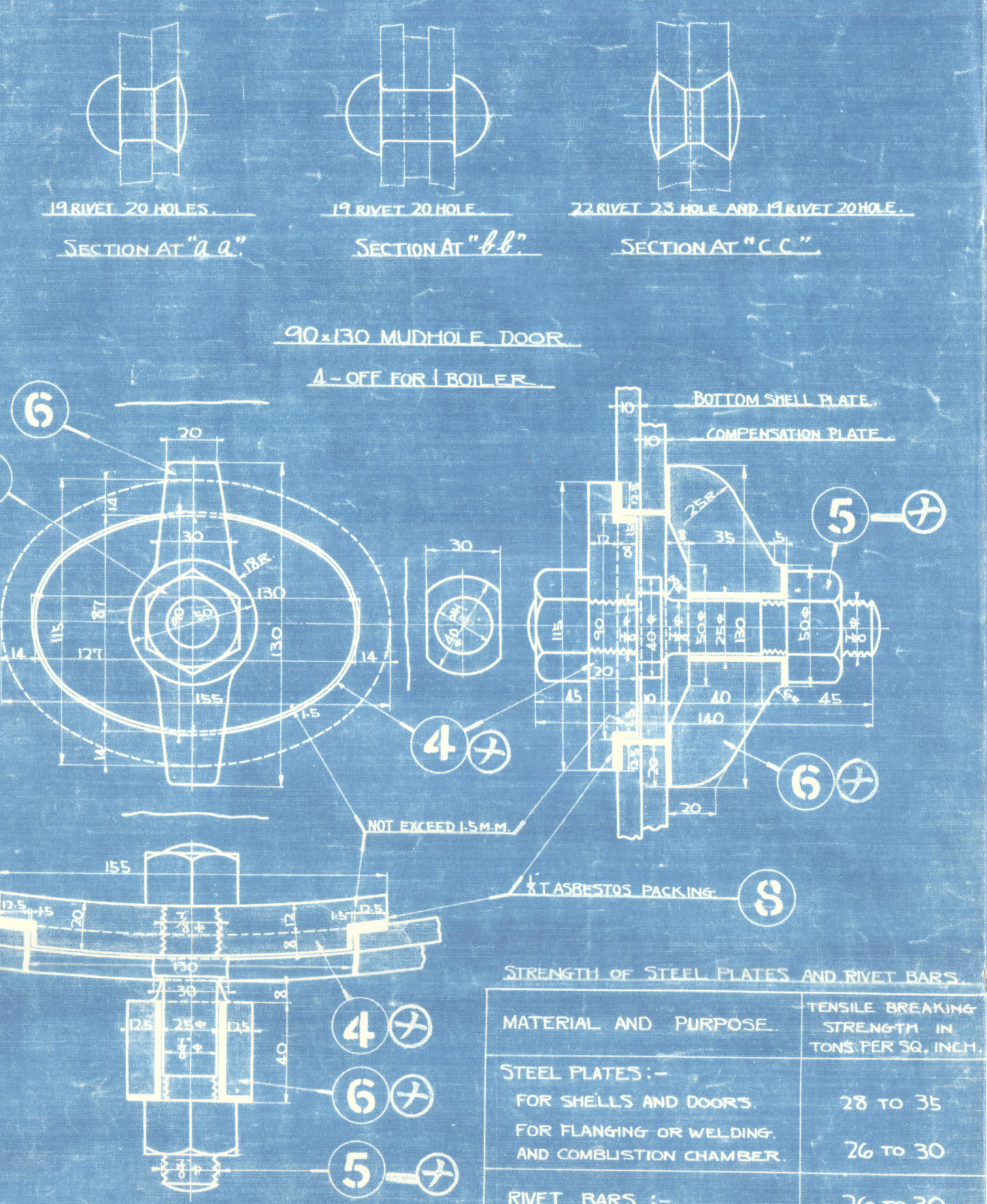


W1278-083 B-1a

PARTICULARS.	
*DIA OF BOILER.	1210 M.M.
HEIGHT OF BOILER.	3000 M.M.
H.S. OF FURNACE.	1.602 SQ.M.
H.S. OF TUBES.	9.336 SQ.M.
H.S. OF TUBE PLATE.)	0.984 SQ.M.
TOTAL HEATING SURFACE.	11.922 SQ.M.



NUMBER OF BOILERS = 1 OFF PER SHIP
WORKING PRESSURE = 100 LBS PER SQ INCH
WATER TEST PRESSURE = 200 LBS PER SQ INCH
ACCORDING TO THE LLOYD'S REQUIREMENT AND KANTOSHU SENPAKU KENSA KISOKU.



STRENGTH OF STEEL PLATES AND RIVET BARS.	
MATERIAL AND PURPOSE.	TENSILE BREAKING STRENGTH IN TONS PER SQ. INCH.
STEEL PLATES:-	
FOR SHELLS AND DOORS.	28 to 35
FOR FLANGING OR WELDING AND COMBUSTION CHAMBER.	26 to 30
RIVET BARS:-	
	26 to 30

THE RANGE OF STRENGTH FOR SHELL AND DOORS SHOULD NOT EXCEED 1 TON PER SQUARE INCH.

二據ル検査ヲ要ス

尺度 1:2, 1:4, 1:8. Lloyd's Reg.

W1278-0155 B-1a

REMAIN

大連汽船株式會社貨物船

M.V. "KANAN MARU"

Nagasaki Report No. 1789.

1210M.M.DIA X 30000M.M. HEIGHT

DONKEY BOILER.

直径 1,110 耗
高 3,000 耗

工務 No. 490 區分 640

特工部 別号

製圖	藤谷一雄	設計	藤谷一雄	係在	
寫圖	小西正元	製圖	藤谷一雄	係在	
檢圖		製圖	藤谷一雄	係在	
出圖		製圖	藤谷一雄	係在	
木型	機工務	1	實驗	設計職裝	1
鑄鑄	檢査	1	外業	3	
鑄鉄	鍛冶		船工		
鑄鋼	銅工		船設		
機械	製罐	2	電圖	控	1
仕上	工具		船圖	監督	

圖番面号 B - 1a



© 2020

Lloyd's Register Foundation

W1278-0155