

Enclosure from  
MACCOLL & POLLOCK, LTD., Sunderland.  
To Lloyds  
2/2

# STEEL BOILER

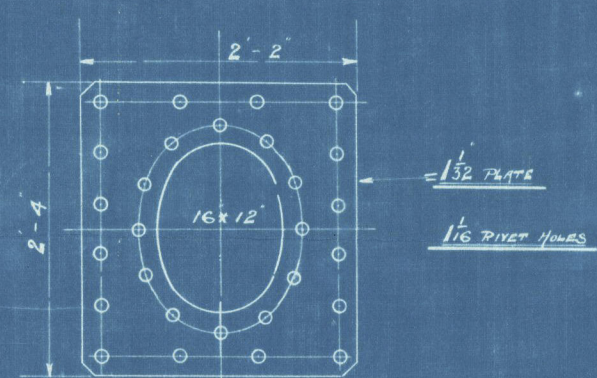
SCALE 1 INCH = 1 FOOT

TO PASS LLOYDS SURVEY

12-6 INSIDE DIAMETER 10-3 INSIDE LENGTH  
180 LBS WORKING PRESSURE 360 LBS TEST PRESSURE

## PARTICULARS OF MATERIAL

DESCRIPTION	MATERIAL	TENSILE STRENGTH
SHELL PLATES BUTT STRAPS MANHOLE PLATE	STEEL	28 1/2 TO 32 TONS
ALL OTHER PLATES	STEEL	26 TO 30 TONS
MAIN STAYS	STEEL	21 TO 32 TONS
SCREWED STAYS	STEEL	26 TO 30 TONS
RIVETS	STEEL	26 TO 30 TONS
TUBES	IRON	

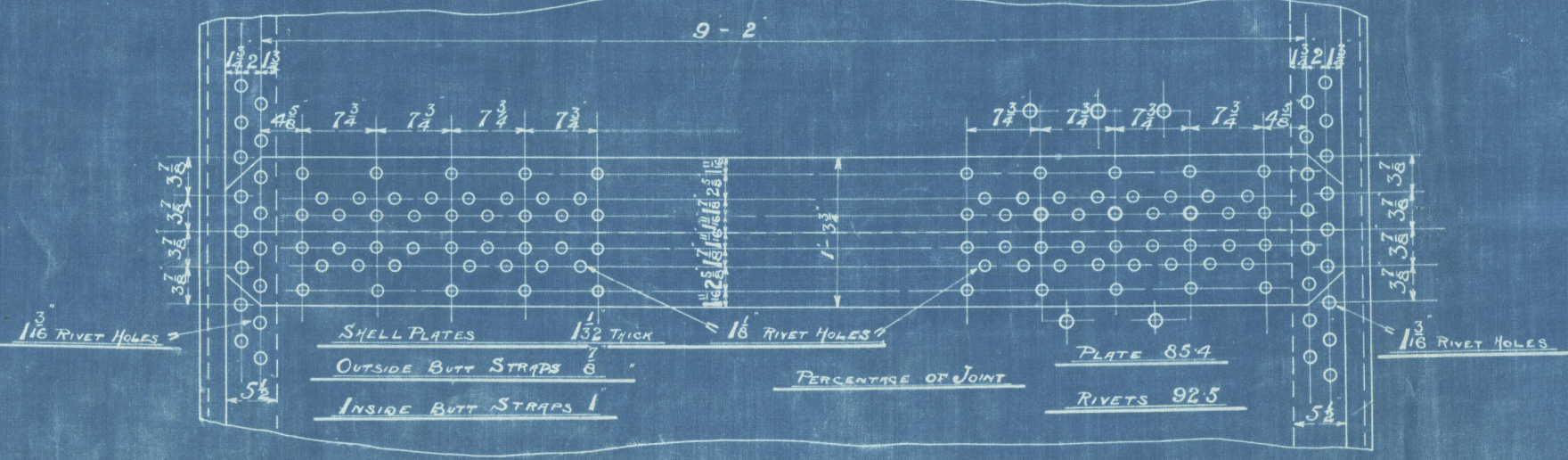
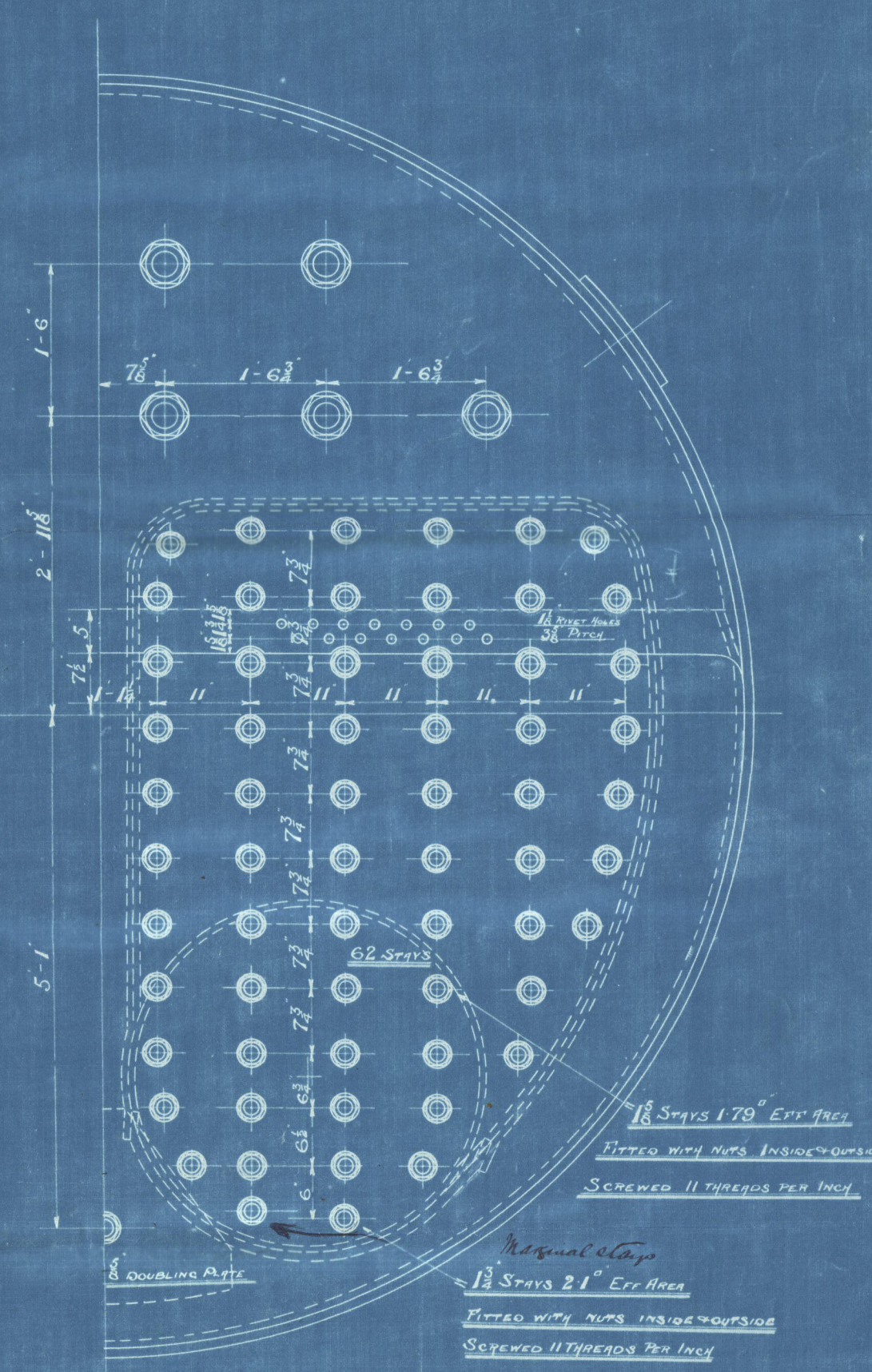
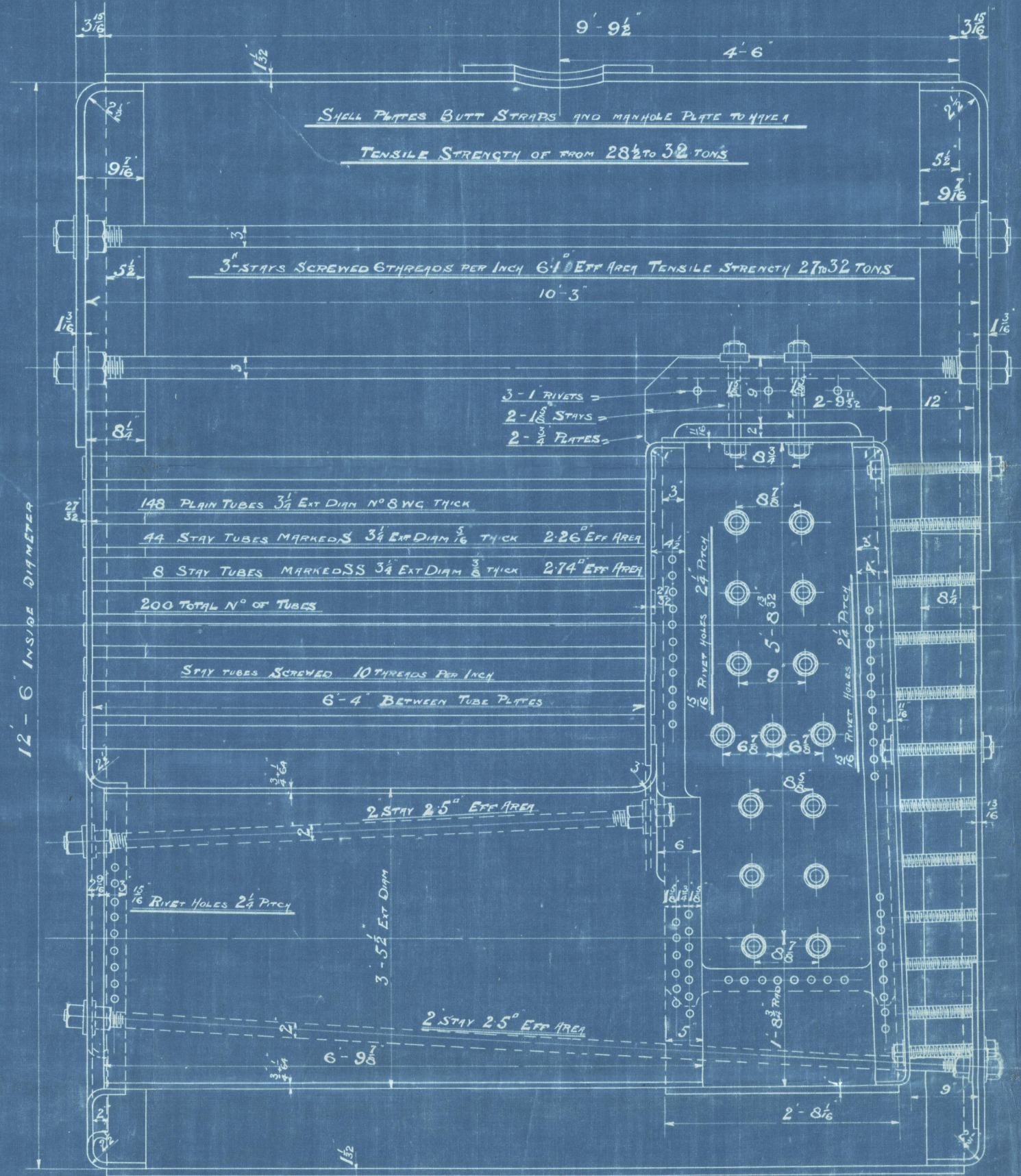
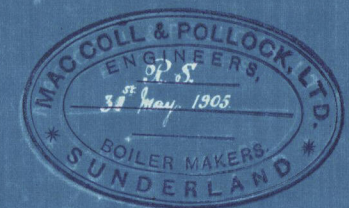


SECTION THRO COMB CHAMBER  
SHOWING STAYS THROUGH TO SHELL

DRAWING N° 1335

## HEATING SURFACE

TUBES	1077.68
FURNACES	68.8
BACK TUBE PLATES	35.76
FRONT TUBE PLATES	24.88
COMBUSTION CHAMBERS	147.88
<b>TOTAL</b>	<b>1355.0 Sq Ft</b>
LLOYDS HEATING SURFACE	1330.12 Sq Ft
GATE SURFACE 5-3 BHP = 35.0 Sq Ft	RATIO $\frac{CS}{HS} = \frac{1}{35.11}$



OFFICE COPY

31/10/05

CONTRACT N° 154-162-3-4-5  
Foundation



Pres. Smith & Co No 798-801

Pres. MacColl & Pollock 162-3-4-5

1 S.E. Boiler to each  
W.P. 140 lbs

C-162

No 2521  
LLOYD'S TEST  
360 lbs  
31.8.06 E.J.S.

C-163

No 2522  
LLOYD'S TEST  
360 lbs  
31.8.06 E.J.S.

C-164

No  
LLOYD'S TEST  
lbs

C-165

No  
LLOYD'S TEST  
lbs

S.S. "India"  
Hd. F. L. No 22947

RETAIN  
LR

© 2021

Lloyd's Register  
Foundation

W1275-0270 1/2