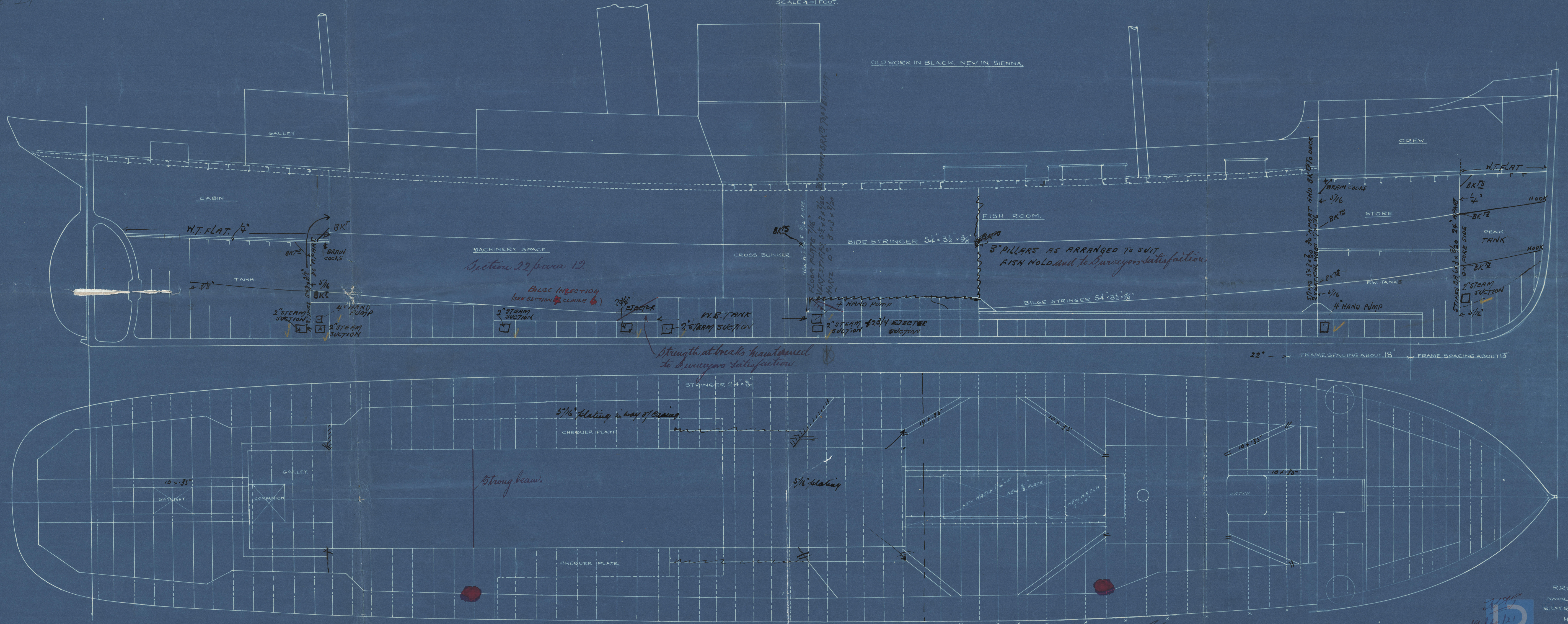


20.4.21

— PROFILE AND DECK PLAN, —
S.S. "FLAMBOROUGH," EX "MURMUR."
S.S. "NORTHERN SEA" EX "APENRADE."
— DIMENSIONS 134' 23" 0' 13' 6" ML —
SCALE 1/4" = 1 FOOT.



R. Reid, M.Inst. N.A.
NAVAL ARCHITECT
6, LYTTON BUILDING
HULL.

19.4.21

Lloyd's Register
Foundation
W12714-0145

PROFILE Y DECK PLAN

S.S. 'FLAMBOROUGH' EX.

'MURWIK'

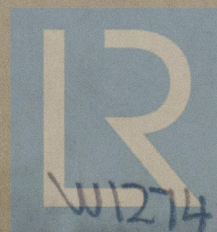
S.S. 'WITHERNSEA' EX.

'APENRADE'

Hull Report Nos $\begin{array}{r} 32752 \\ 32753 \end{array}$

*Freemantle = Flamborough
Apennine = Murwik*

RETAIN



© 2020

Lloyd's Register
Foundation

W1274-0145