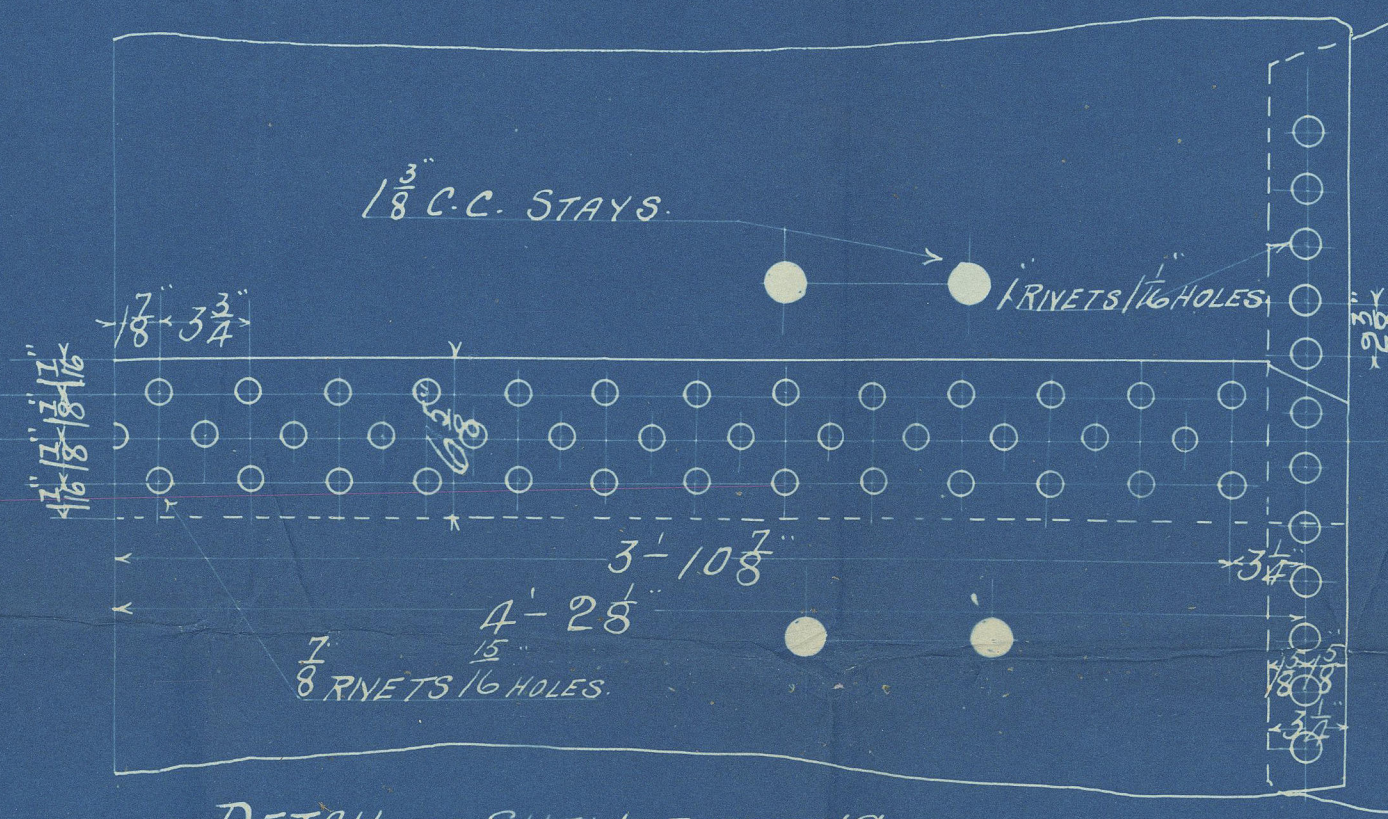


20:5:05

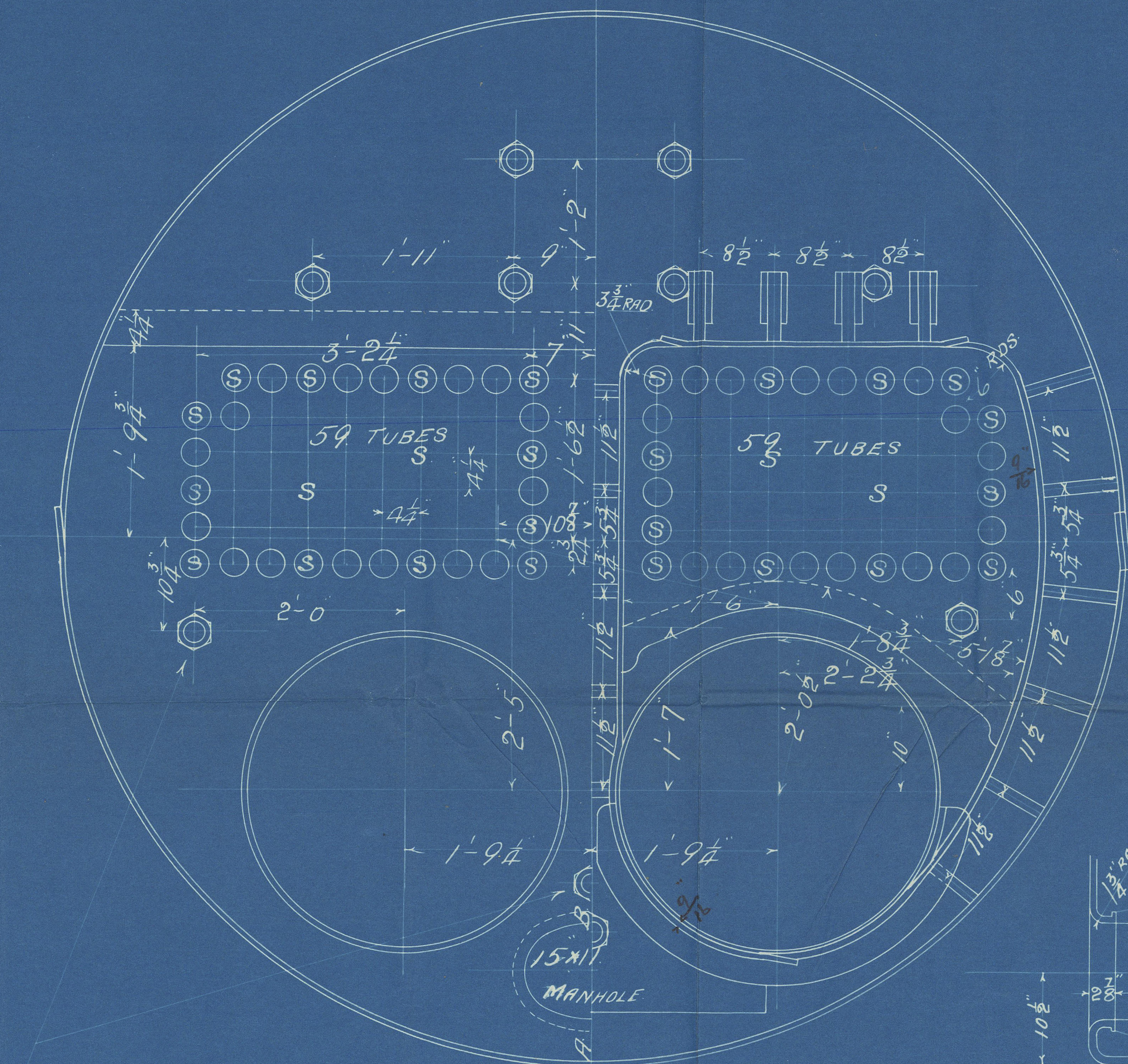
HEATING SURFACE 118 TUBES	550 #
2 FURNACES	64 #
2 COMB. CHAS	98 #
TOTAL	712 #
GRATE AREA (4-6" BARS)	27 #
AREA THRO' TUBES	4.565 #
RATIO $\frac{G.A.}{H.S.}$	26.3
" $\frac{A.T.T.}{G.A.}$	5.9
STEAM SPACE	15.7 Cu Ft



DETAIL OF SHELL RIVETING

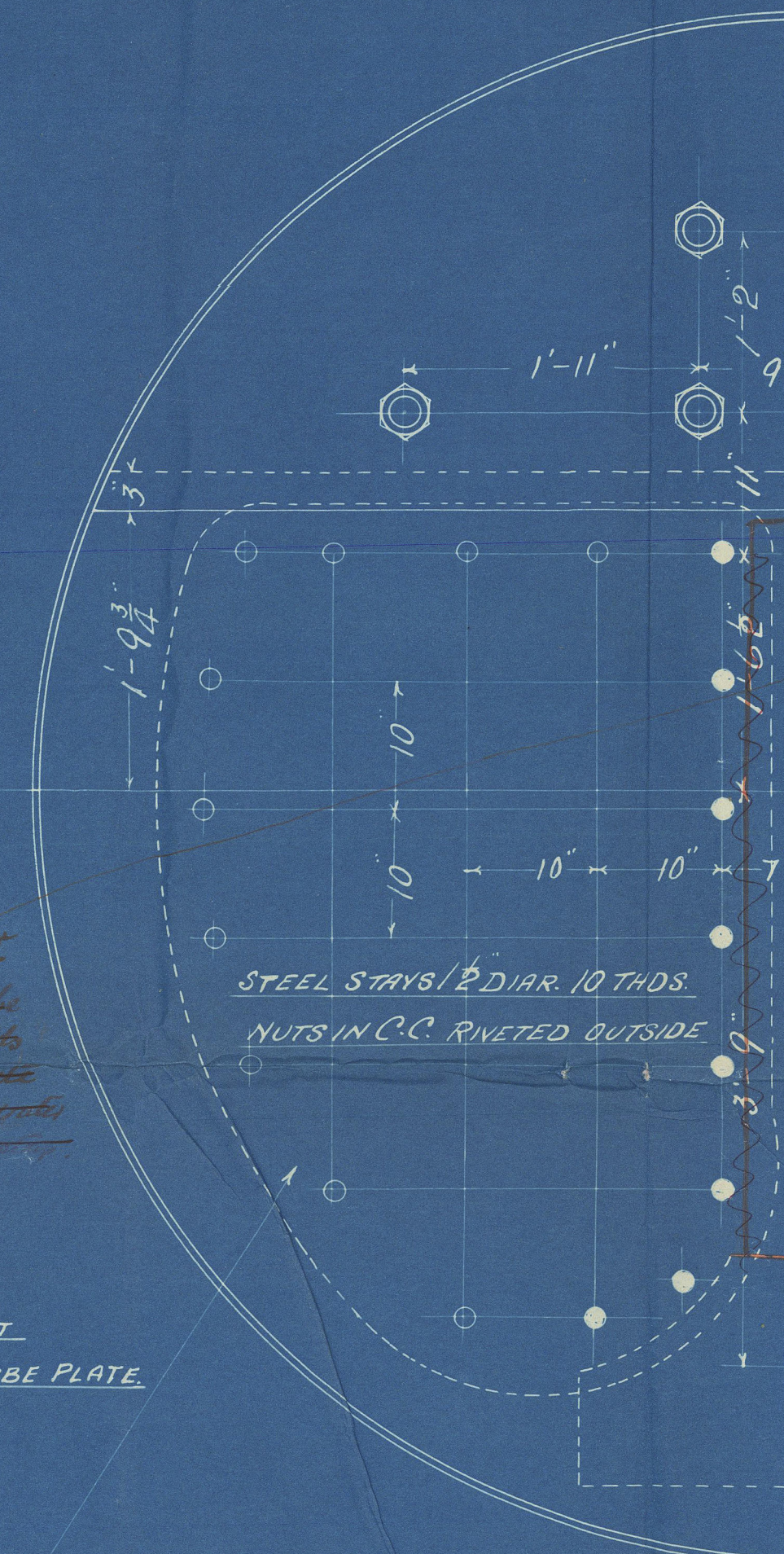
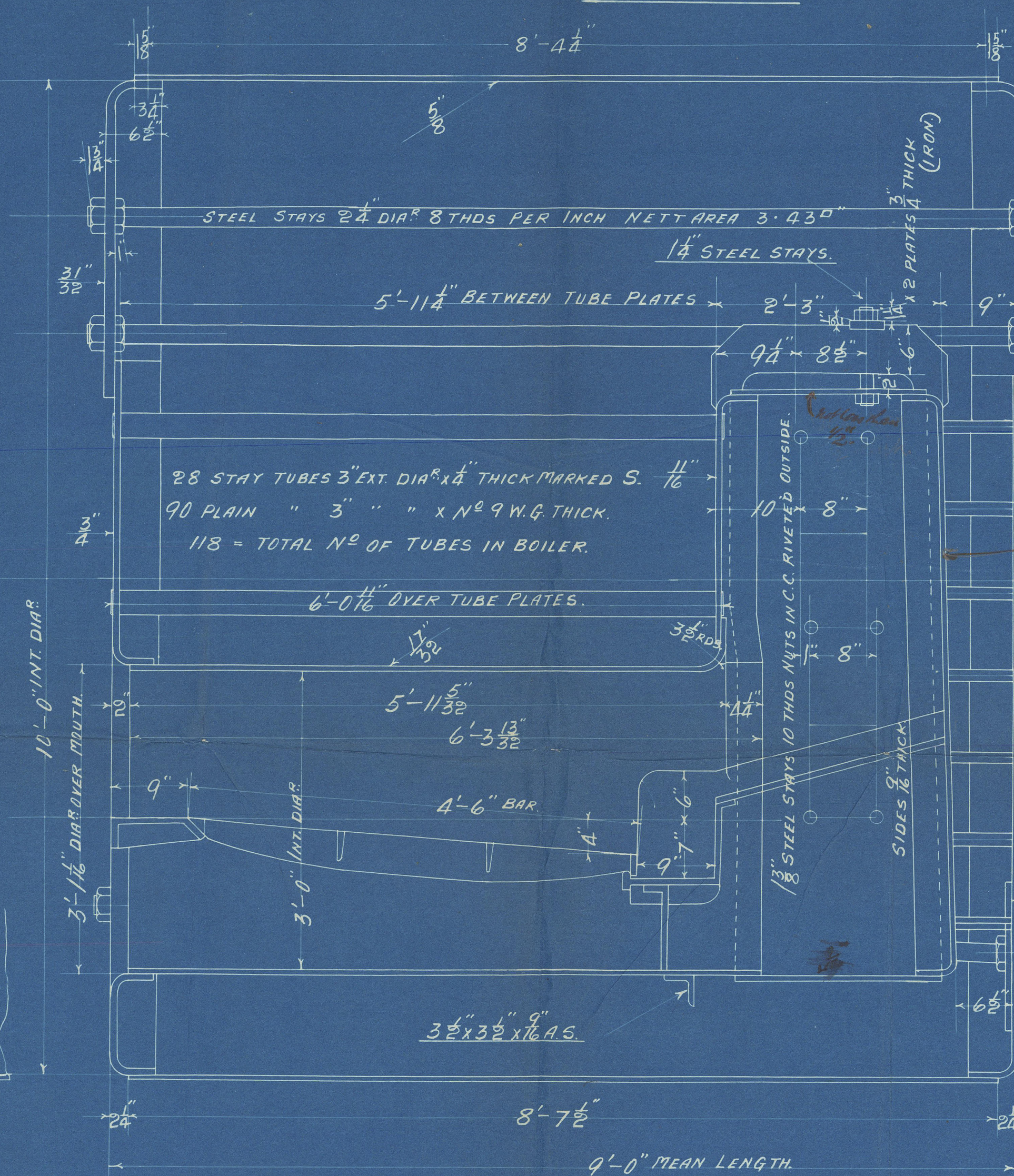
SCALE 1/8" = 1 FOOT

**RIVETING**  
**LONGITUDINAL SEAMS**  
 SHELL 5" RIVETS 7" HOLES 1 1/8" PITCH 3/4" PLATE 7/8 75. RIVET 7/8 75.  
 SHELL PLATE TO HAVE A MAX. TENSILE STRENGTH OF 32 TONS/SQ. INCH  
 MIN. OF 28 TONS PER SQ. INCH.  
**END SEAMS**  
 RIVETS 1" HOLES 1 1/8" PITCH 2 3/8" PLATE 7/8 55.2 RIVET 7/8 50.7.  
 ALL HOLES BORED IN PLACE. BOILER STEEL, TUBES & GIRDERS IRON.  
 McNEIL'S 16x12" MANHOLE DOOR AND RING IN SHELL  
 UNDER LLOYD'S SURVEY FOR A W.P. OF 100 LBS. PER SQ. INCH.



2 1/2" STEEL STAYS

SECTION THRO' A.B.



Rebuilding of flue (see alternative)  
 and flue 3/8" thick.

not backflow  
 10' 1" dia.  
 7/8" all along like  
 with backflow  
 8' 10" long  
 1 1/8" at bottom  
 1 1/8" at top

1/8" DOUBLING  
 USE PLATES CUT  
 FROM BACK TUBE PLATE

MARGINAL STAYS MARKED THUS 5" DIA. 10 THDS. NETT AREA 1.76 sq. in.  
 10 " " " " 1.475 sq. in.

ONE STEEL DONKEY BOILER THUS FOR N<sup>o</sup> 295

2/5/05.

SCALE 1" = 1 FOOT

W. & J. J. J. J.  
 MAY 18 1905  
 GLASGOW  
 ENGINEERS & BOILERMAKERS

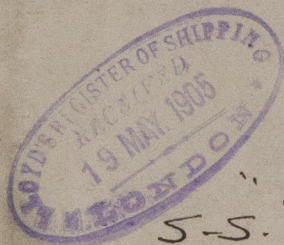
38 1/2  
 19.505



Dunsmuir Jackson

295

Monkey Lvs

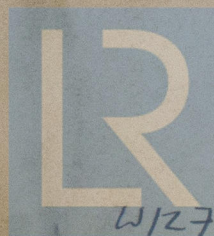


S.S. "Visigoth"

Gls. rht. No. 24015



RETAIN



© 2021

Lloyd's Register  
Foundation

W1272-0218