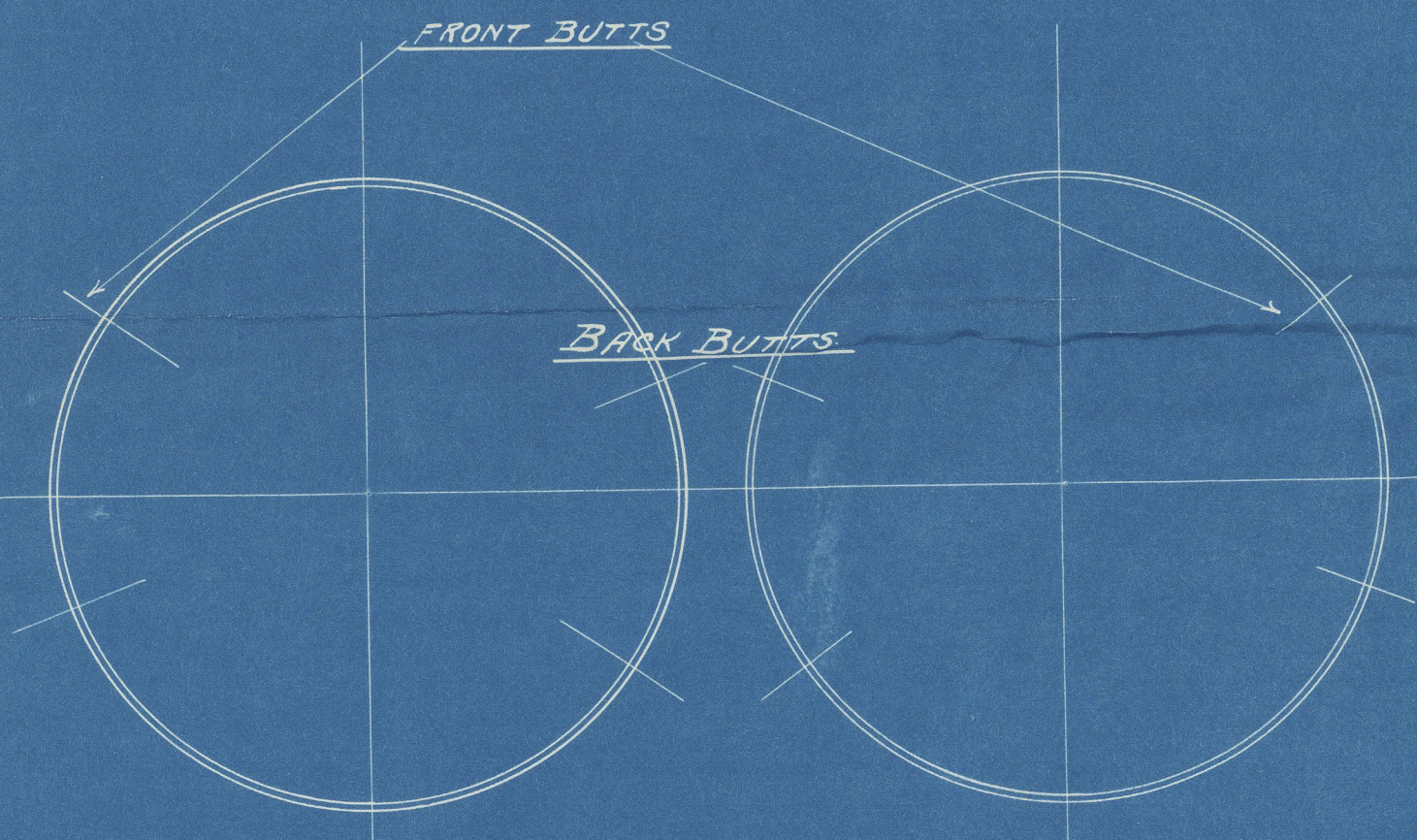
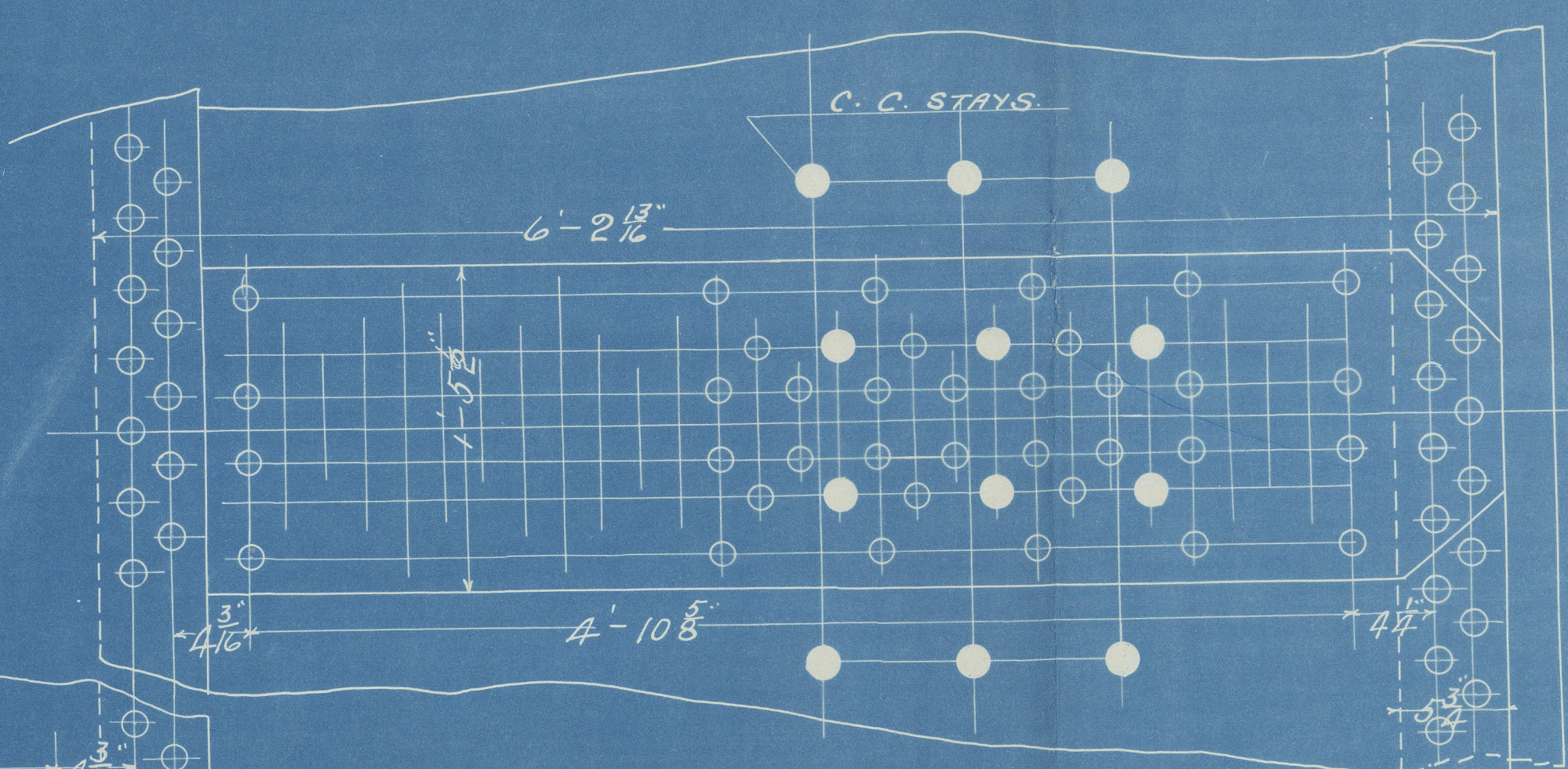
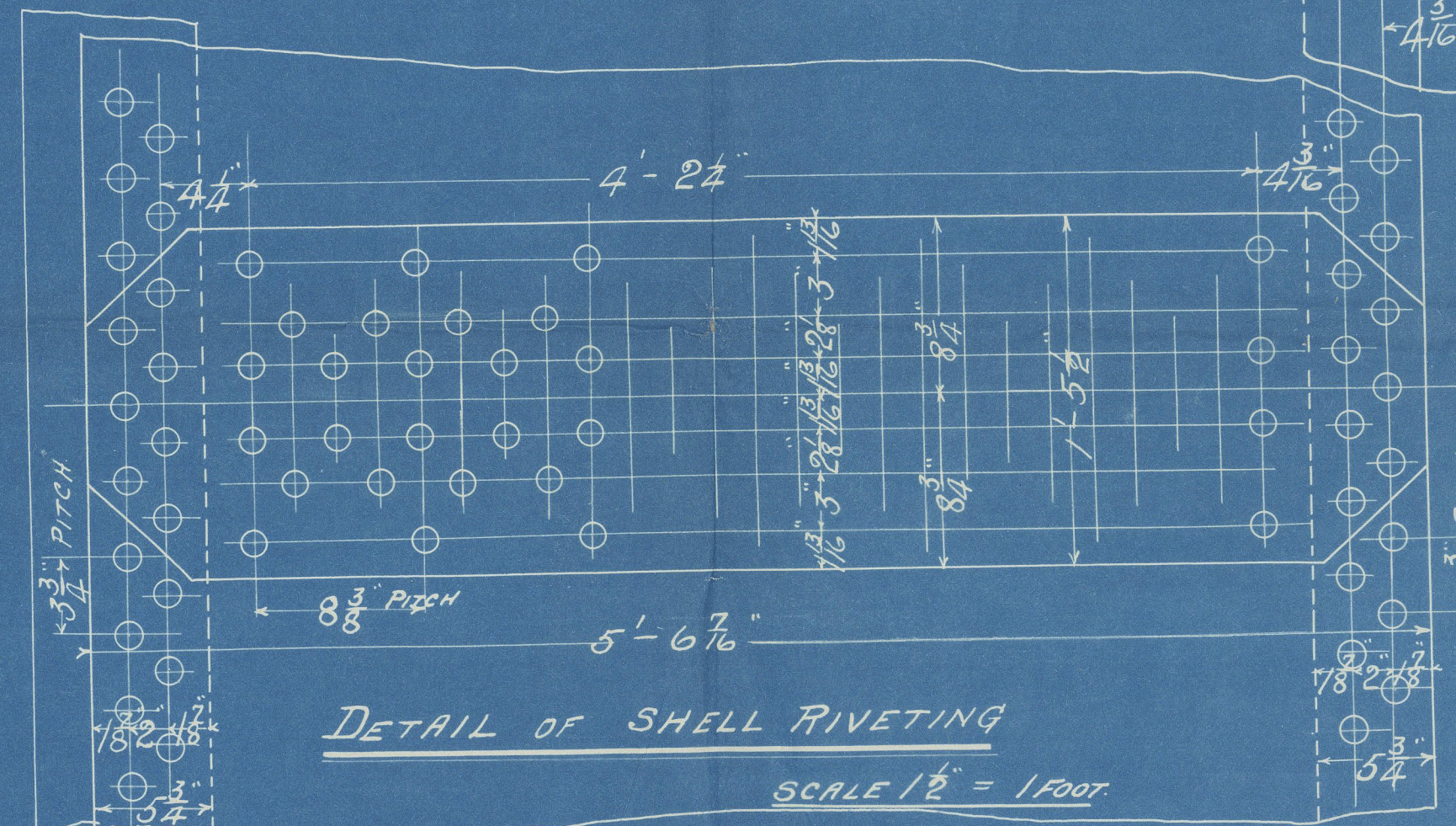


20:5 05.



PARTICULARS.

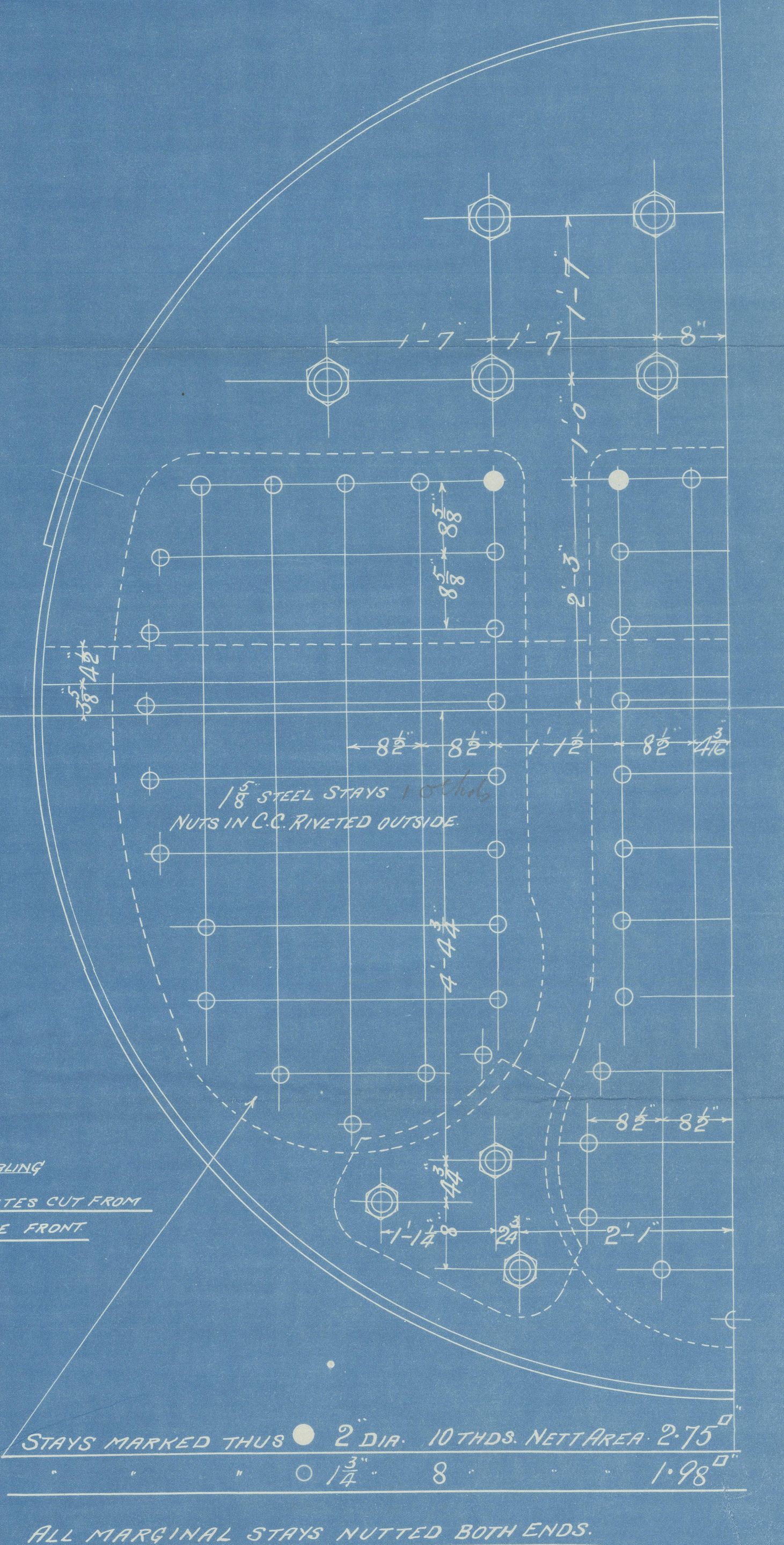
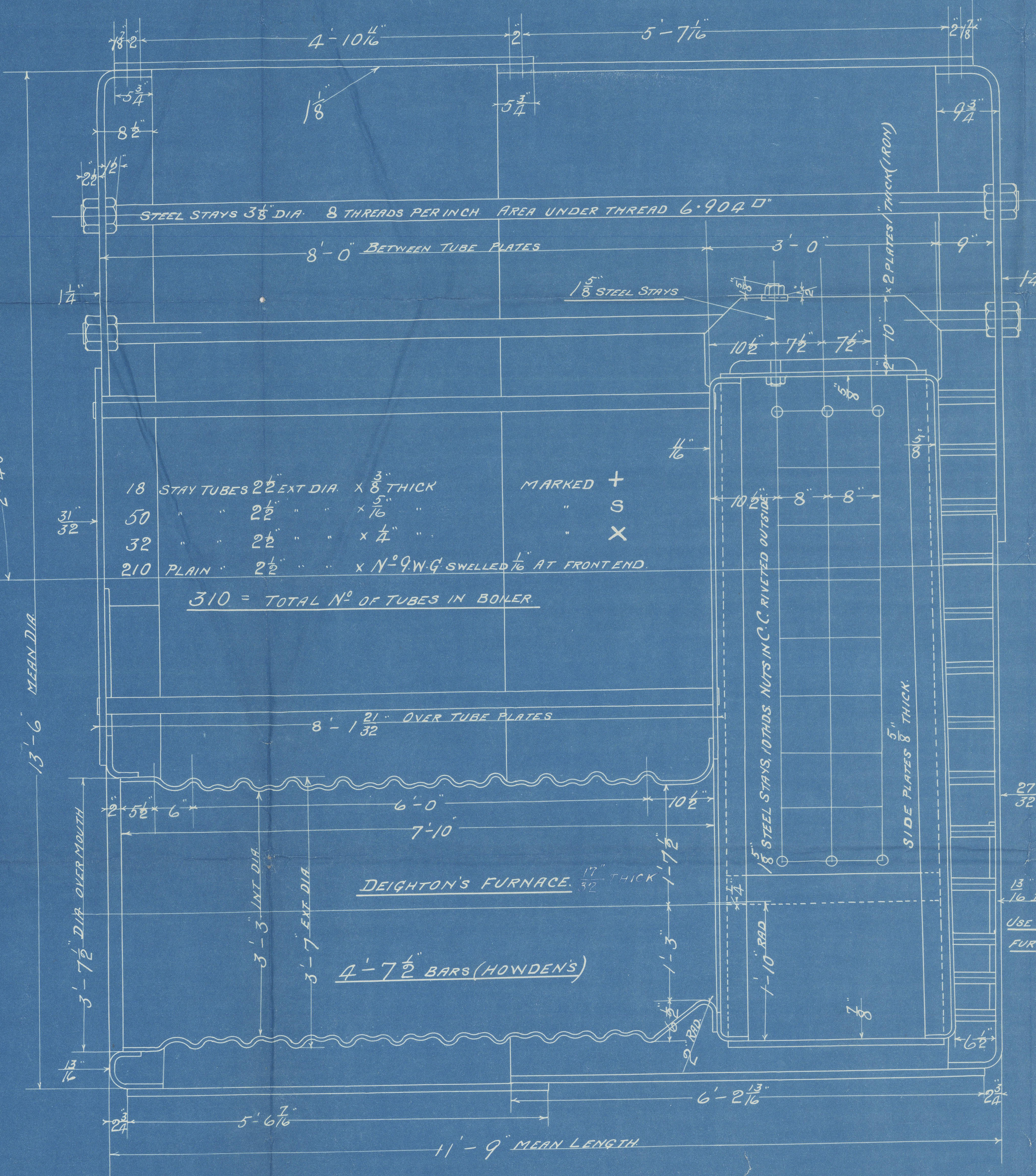
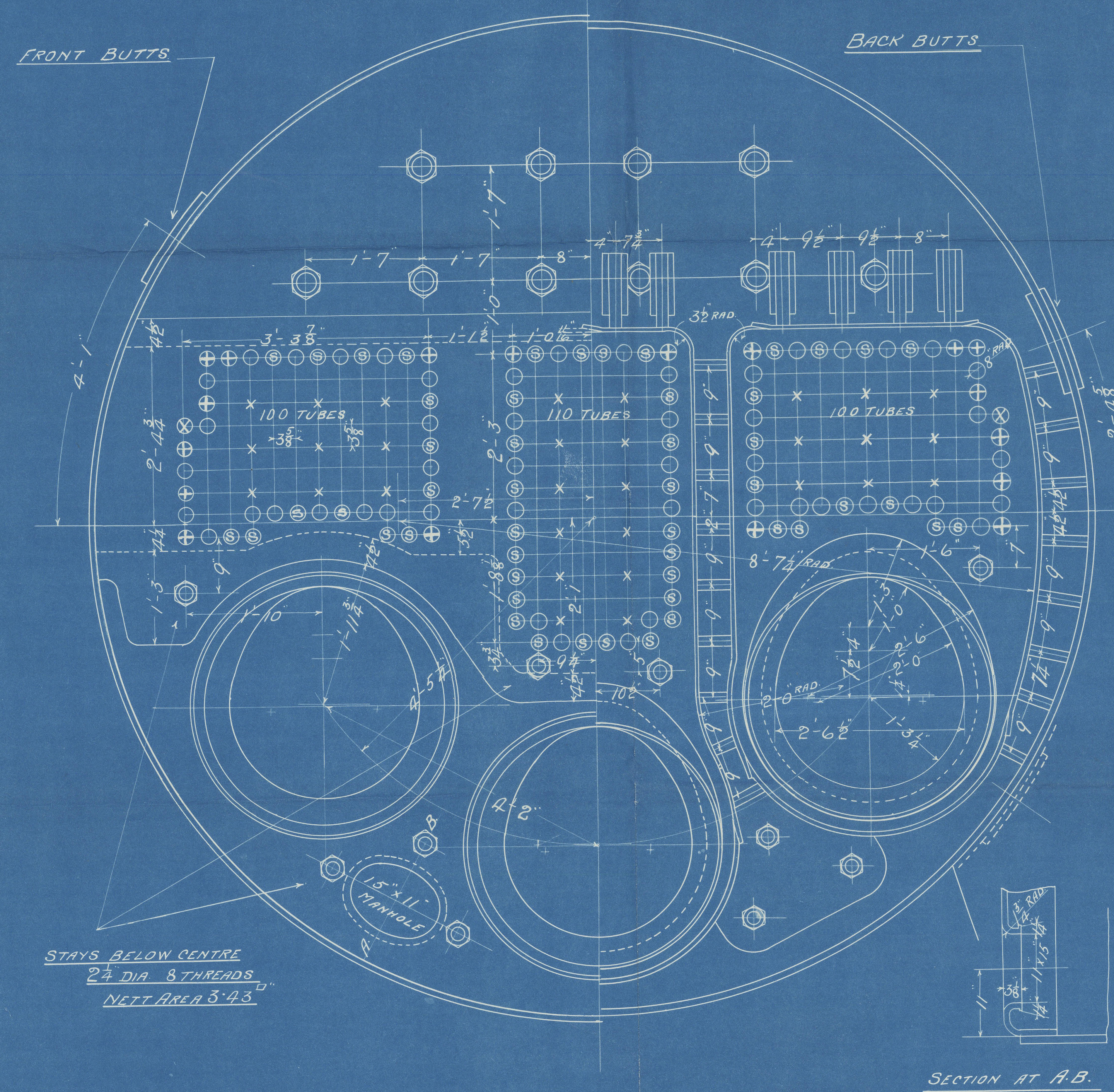
HEATING SURFACE 310 TUBES	1623 #
" " 3 COMB' CHAS	247 #
" " 3 FURNACES	157 #
" " TOTAL	2027 #
GRATE AREA (4-7 1/2) BARS	45 #
AREA THRO' TUBES	7.564 #
RATIO	45
" AREA THRO' TUBES	5.95
STEAM SPACE	358 cu ft
TWO BOILERS	
TOTAL HEATING SURFACE	4054 #
TOTAL GRATE AREA	90 #



SHELL 1/8" RIVETS 1/8" HOLES 1/8" PITCH 8 3/8" PLATE 7/8" 85.8 RIVET 7/8" 4. BUTT STRAPS OUTER 1/2" THICK
 INNER 1/32" THICK SHELL PLATES & BUTT STRAPS TO HAVE A MAX. TENSILE STRENGTH OF 32 TONS
 & A MIN. OF 28 TONS PER SQ. INCH

CIRCUMFERENTIAL SEAMS
 RIVETS 1/8" HOLES 1/4" PITCH 3 3/4" PLATE 1/2" 66.6 RIVET 1/2" 49.4
 BOILER STEEL, TUBES & GIRDERS IRON, ALL HOLES DRILLED IN PLACE
 McNEIL'S 16" x 12" MANHOLE DOOR & RING IN SHELL
 UNDER LLOYD'S SURVEY FOR A. W.P. OF 180 LBS PER SQ. INCH

POSITION OF BUTT STRAPS & MANHOLES



2 STEEL BOILERS THUS FOR N° 295

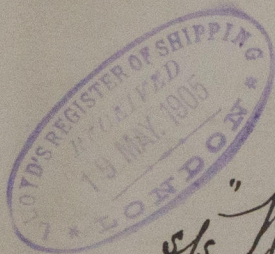
26/4/05 SCALE 1/2" = 1'00"

JRM.
 19.5.05

Museum Jackson

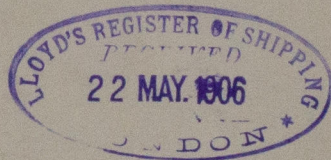
295-

main books



sp "Kisigoth."

Gls npt. No. 24015



RETAIN



© 2021

Lloyd's Register
Foundation

W1272-0217