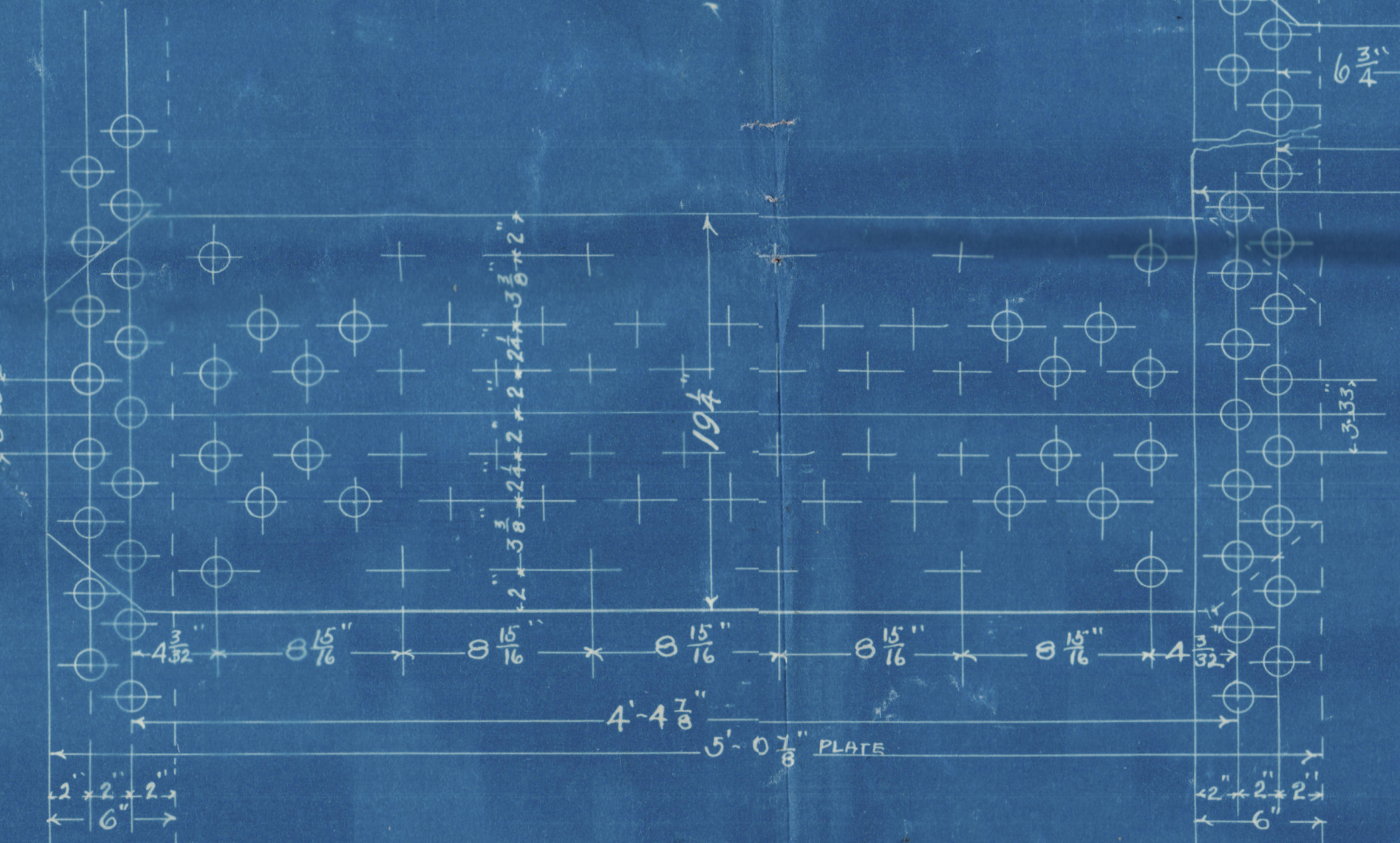


27.10.00

THICKNESS OF PLATES		SURFACES		1 BOILER 2 BOILERS	
SHELL OF BOILER	Steel 1 1/2"	410 TUBES 2 1/2" EXT DIA X 11 1/2" HGT	2124 #	4122 #	
INNER BUTT STRAPS	1 1/2"	FIREBOXES	280 #	560 #	
OUTER " "	1"	FURNACES	157 #	314 #	
TOP FRONT & BACK	1 1/2"	TOTAL	2361 #	4722 #	
FRONT TUBE PLATE	1 1/2"	GATE AREA	665 #	1330 #	
BOTTOM FRONT	1 1/2"	WATER SURFACE			
CENTRE BACK	1 1/2"	STEAM SPACE			
BOTTOM BACK	1 1/2"	AREA THRO TUBES	10 #		
BACK TUBE PLATE	1 1/2"	RATIO GATE AREA TO HEATING SURF			
FURNACES	1 1/2"	" " " TUBE SURFACE			
FIREBOXES TOP	1 1/2"	" " " WATER "			
" SIDES	1 1/2"	" " " STEAM SPACE			
" BACK	1 1/2"	" " " AREA THRO TUBES			
BOTTOM	1 1/2"	1/2 BOILER ABOVE FIREBOXES			
DOUBLING FRONT TUBE PLATE	1 1/2"	WEIGHT OF WATER IN 1 BOILER			
CENTRE BACK	1 1/2"	LENGTH OF FIREBARS	5'-3"		
BOTT BACK	1 1/2"				

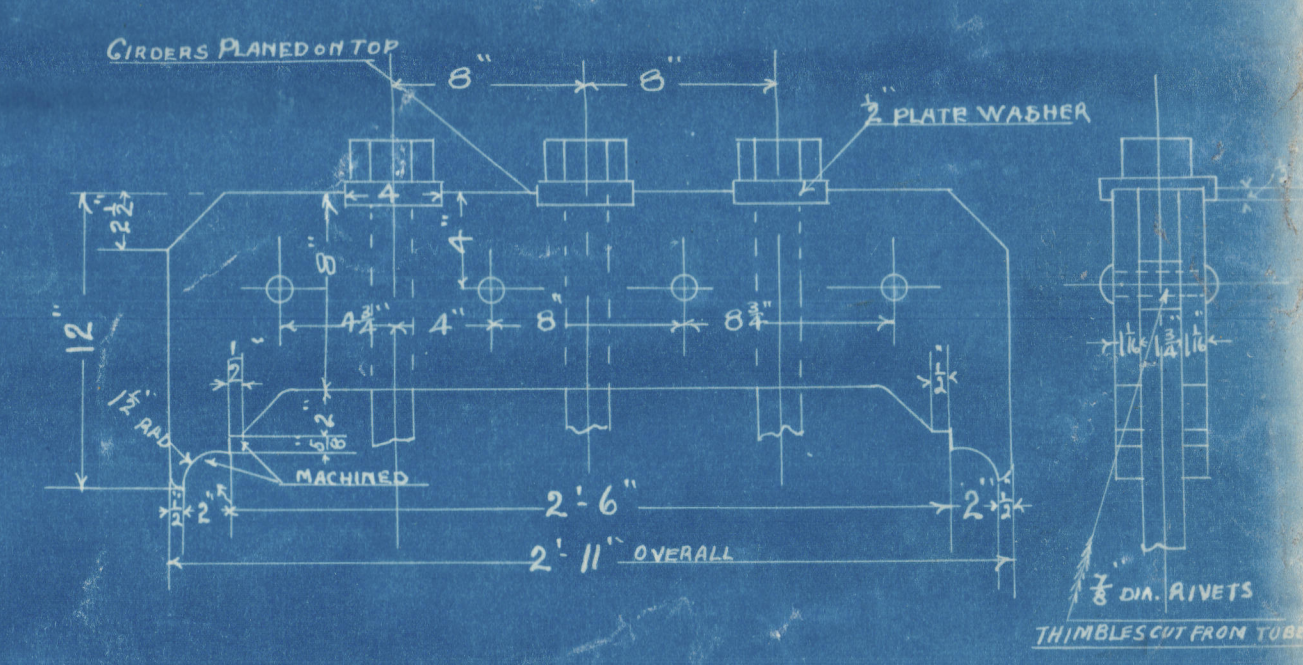
RIVET HOLES IN CIRC. SEAM 1 1/8" DIA



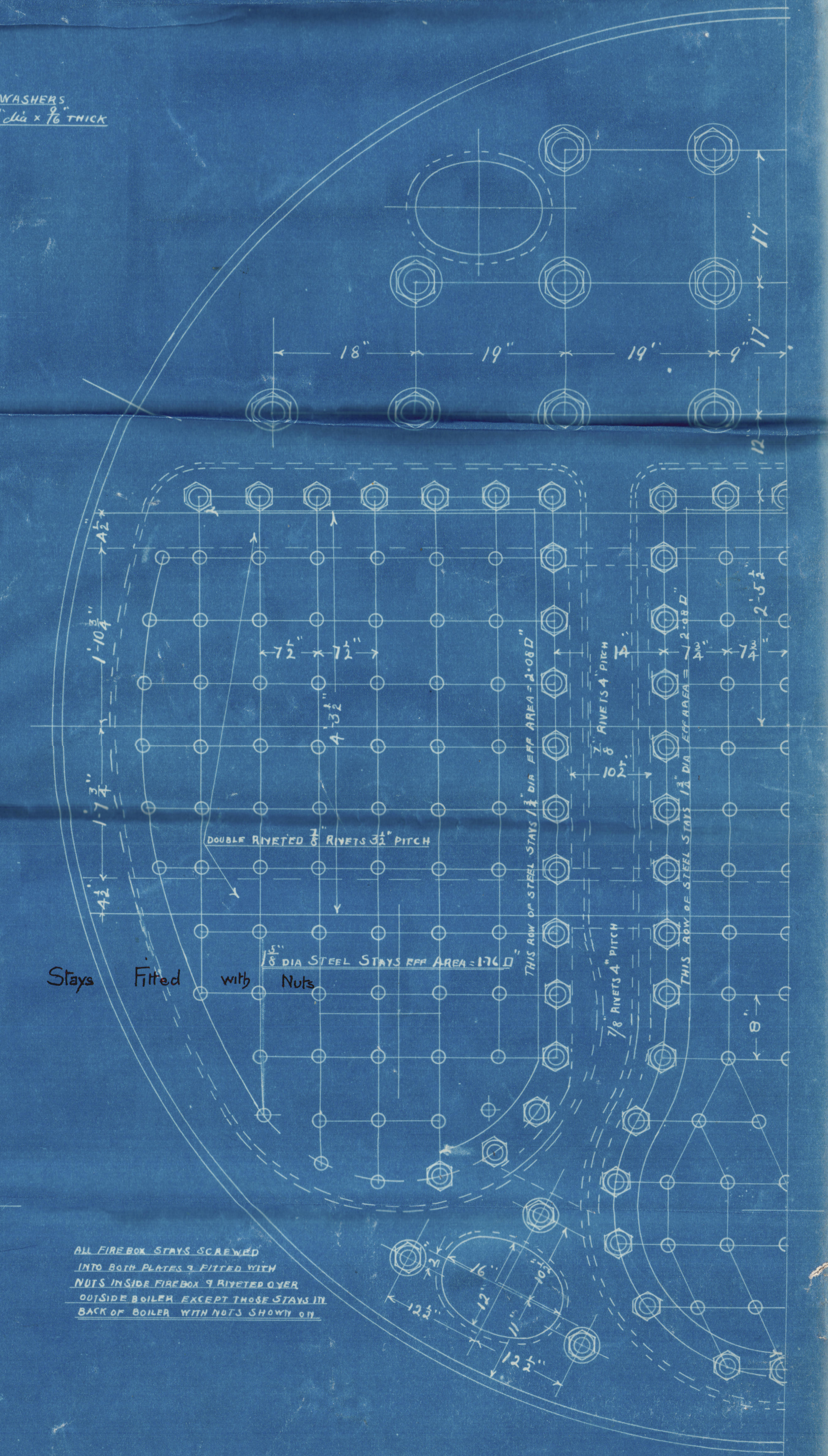
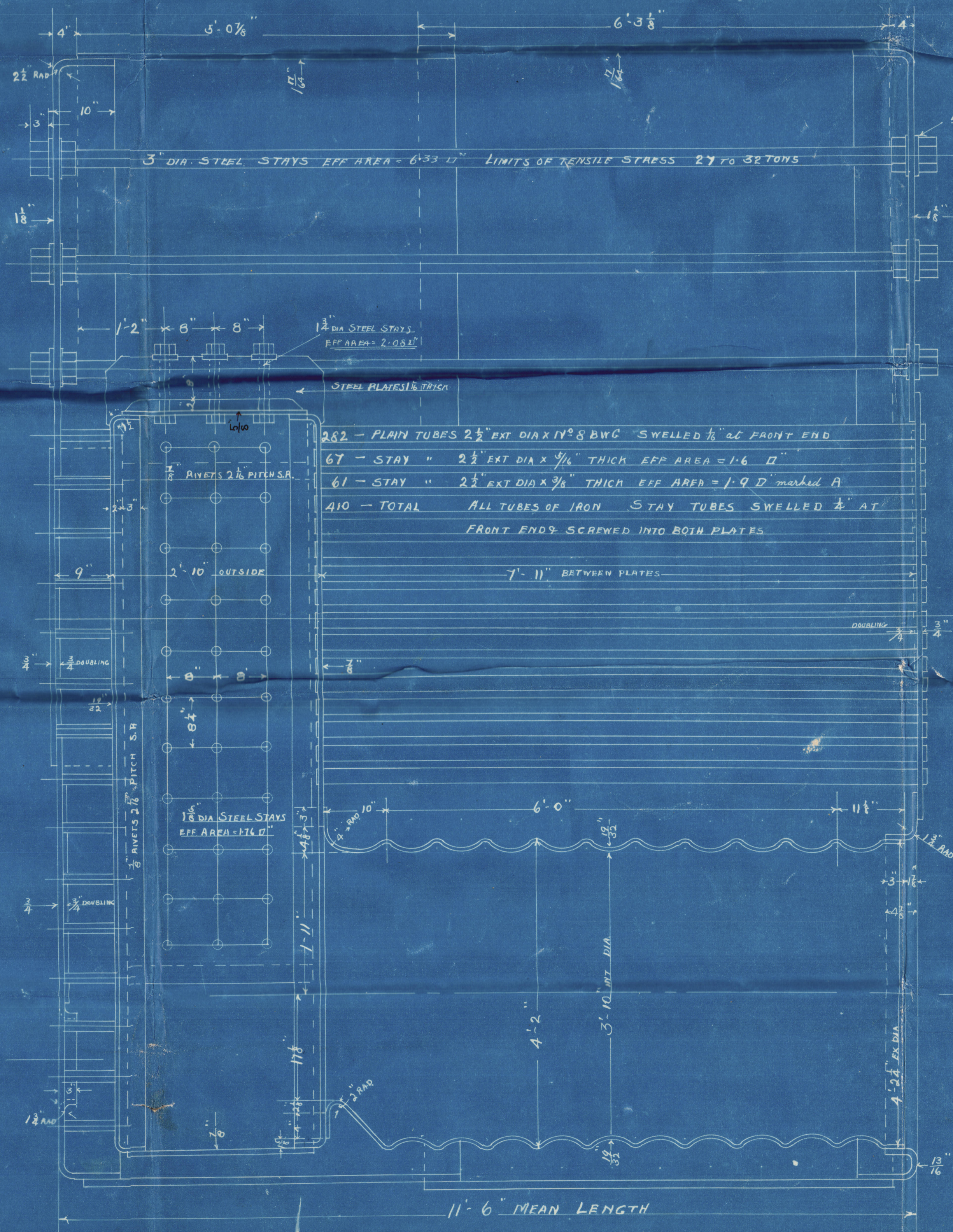
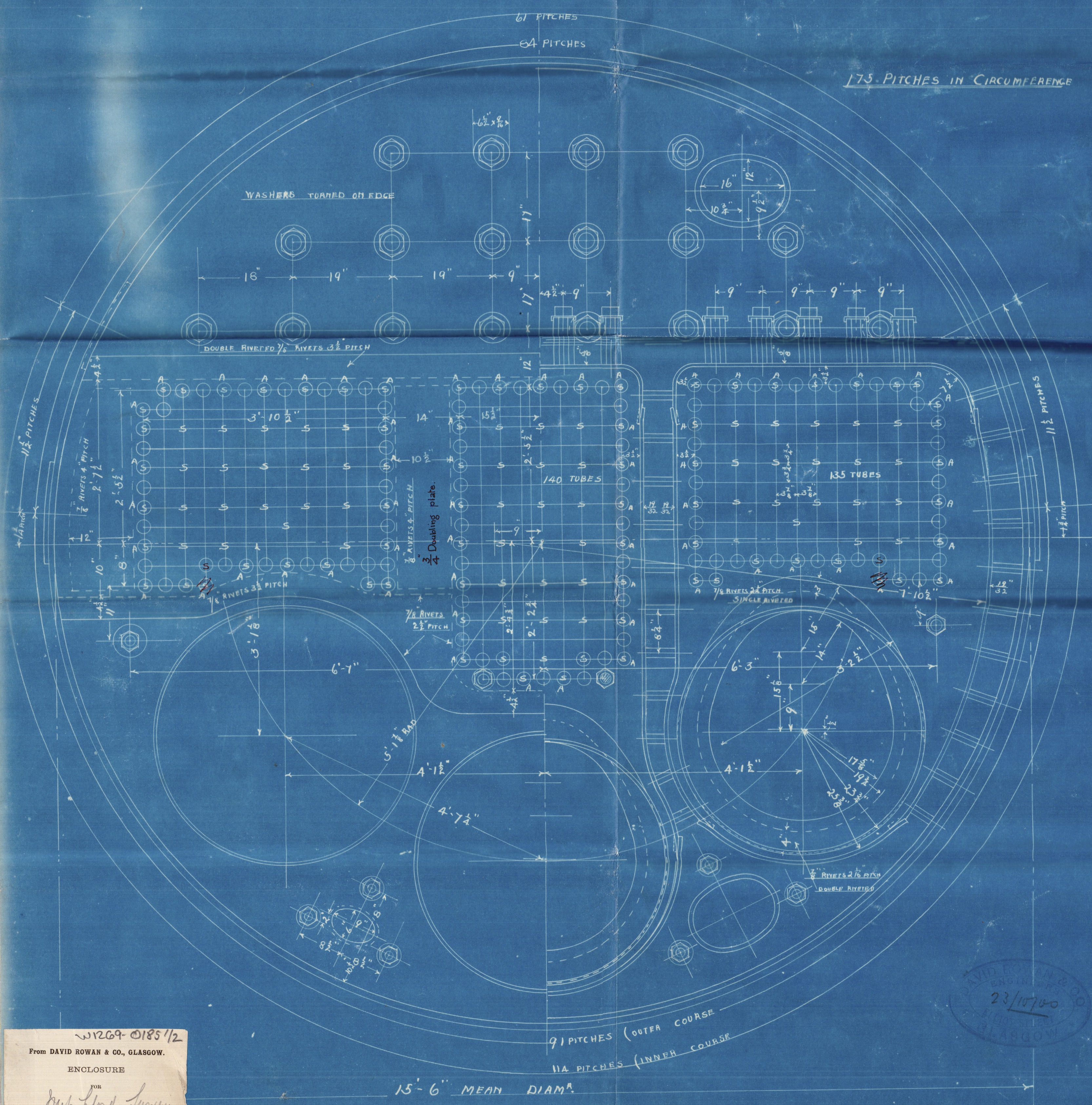
RIVET HOLES IN CIRC. SEAM 1 1/8" DIA

SCALE 1 1/2" = ONE FT.
SHELL PLATES 1 1/2" THK (INSIDE BUTT STRAPS 1 1/8" THK OUTSIDE BUTT STRAPS 1" THK)
RIVET HOLES 1 1/8" DIA DRILLED IN PLACE ALL PLATES 4 RIVETS OF STEEL
LIMITS OF TENSILE STRESS OF SHELL 28.632 TONS
% PLATE = 85.3% % RIVET = 89.35%

RIVET HOLES IN CIRC. SEAM 1 1/8" DIA



GIRDERS
SCALE 1 1/2" = 1 FOOT



W269-0185/12
From DAVID ROWAN & CO., GLASGOW.
ENCLOSURE

DR N 101

WORKING PRESSURE 180 LBS

MAIN BOILER N° 345-6
SCALE - 1" = ONE FOOT

2 OFF EACH N°

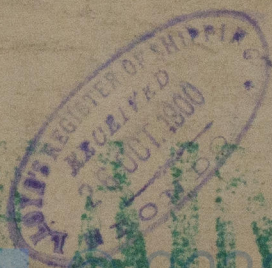
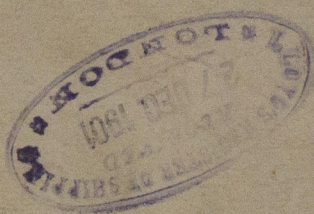
W269-0185/12
27.10.00

David Rowan & Co
Main boilers 345.
346.

Working pressure 180 lbs

"
of Inverness"

S/S
Glasgow No 19490



Lloyd's Register
Foundation

W1269-0185 1/2

W1269-0185 1/2