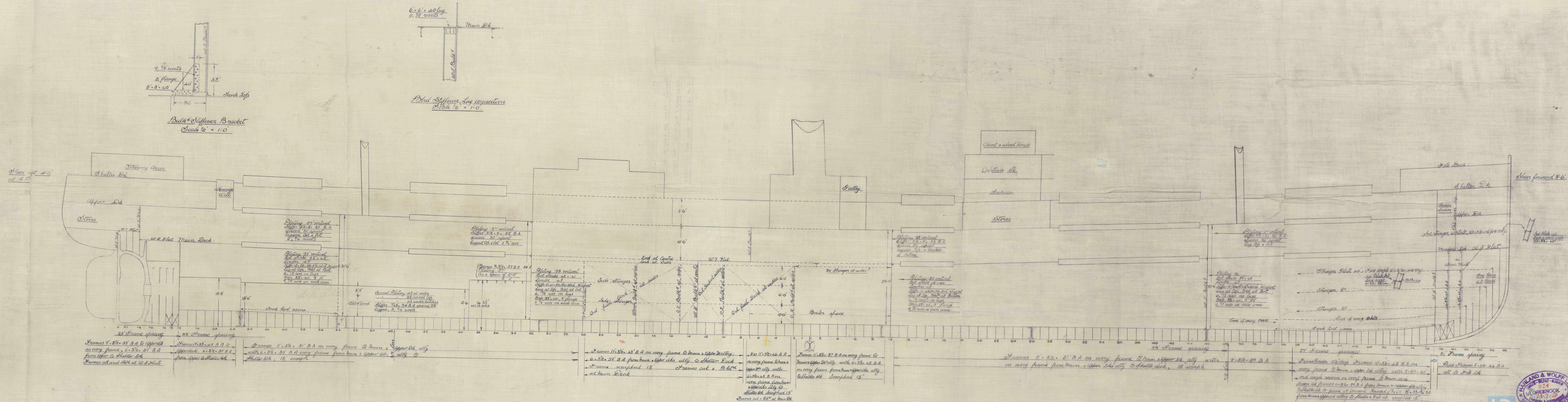


S S Behar.

Profile. (as fitted.)

Scale $\frac{1}{8}'' = 1'-0''$.

Dimensions 435'0" B.P. 57'4" mld x 40'9" mld to
Upper Deck.
To class Lloyd's 100 A1 with freeboard (corresponding to
that of a C.S.S. vessel with Tonnage Opening).
Stem overhang 17'6"
Actions shown are 1924 British standard



PROFILE. PLAN. OF SHIP AS BUILT.

HARLAND & WOLFF'S. No 830.

S.S. 'BEHAR' GRK. RPT. NO. 18999.



© 2020

Lloyd's Register
Foundation

W1267-0162