



38-2-03
78-3-03
16-4-03

MIDSHIP SECTION

SS No 501

DIMENSIONS 220' 0" x 33' 0" EX x 13' 0" MAIN DECK

LLOYDS 100 A1 CLASS AWNING DECK WITH STRENGTHENED TOPSIDE

SCALE 1/2" = 1 FOOT

"Zambegia"

NUMERALS

1/2 BREADTH	16' 42"
1/2 GIRTH	21' 66"
DEPTH	21' 64"
	72' 72"
	218' 41"
	72' 72"
	29088
	58176
	7272
	14544
	15882.7752

DEPTH TO LENGTH 218' 41" / 21' 64" = 10.09

AWNING DECK NUMERALS

1/2 BREADTH	16' 42"
1/2 GIRTH	21' 66"
DEPTH	21' 64"
	72' 72"
	218' 41"
	5676
	22704
	45408
	5676
	11352
	12396.9516 PLATING No

DEPTH TO LENGTH 218' 41" / 13' 66" = 15.98

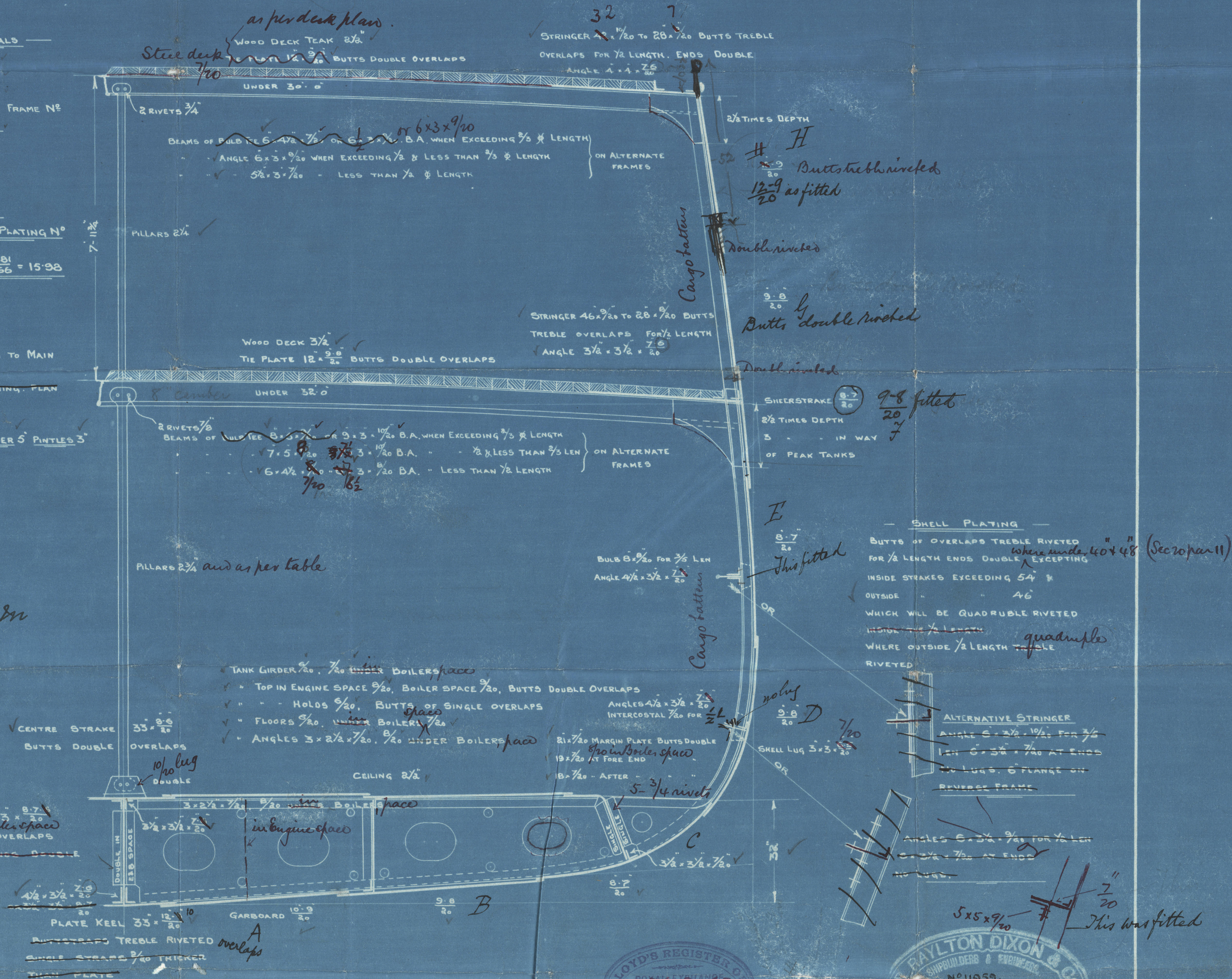
- ✓ FRAMES 3 1/2" x 3 1/2" SPACED 22" APART
- ✓ IN CELLULAR BOTTOM OF 3 1/2" x 3 1/2"
- ✓ REVERSE FRAMES 3 1/2" x 2 1/2" x 1/2" EXTENDING TO MAIN DECK ALL FORE & AFT
- ✓ BULKHEADS 30" PLANKED PLATE SHEETING PLAN
- ✓ FLOORS AT ENDS 7/20
- ✓ STEM 7 1/2" x 2 1/2", STERN POST 7 1/2" x 4 1/2", RUDDER 5" PINTLES 3"

EQUIPMENT NUMBER

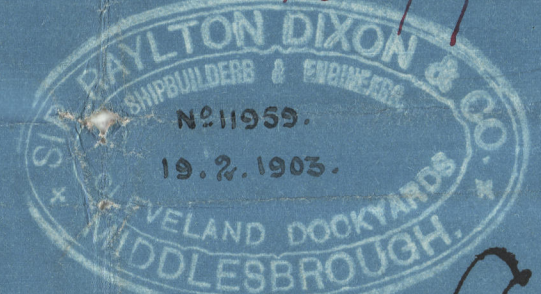
56.76
218.41
8) 12396.95
1549.62

13946.57 - EQUIPMENT No

Forecast 212
14158 equipment No = 8m

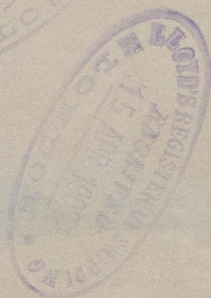
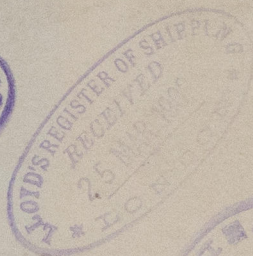


SS No 501



Sir R. Dixon & Co
No 501

Midship Section



"Zambesia"
Mdb. Report No 3699.



© 2020

Lloyd's Register
Foundation

W1266-0293