

26-516

NO. 5 SHIP.
CONSTRUCTION PROFILE.
DECK & INNER BOTTOM PLANS.

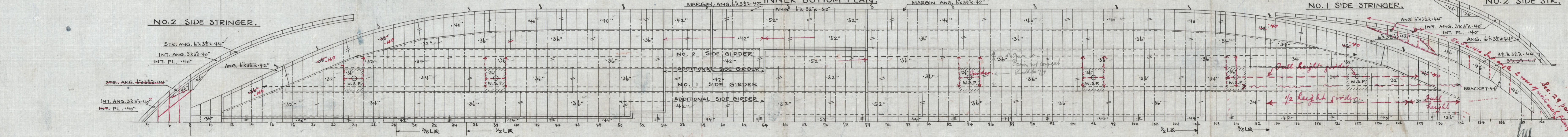
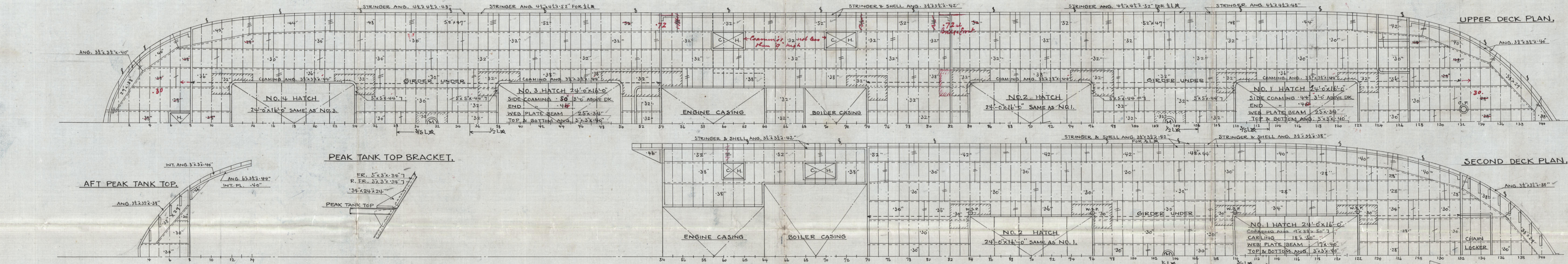
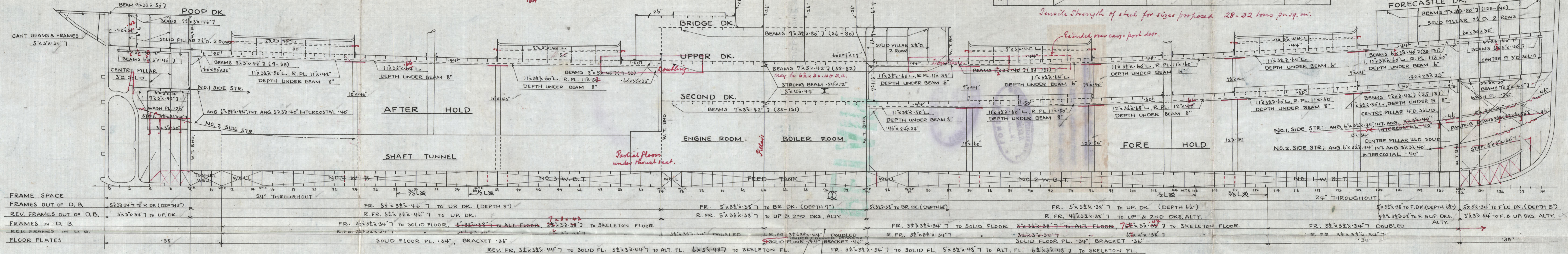
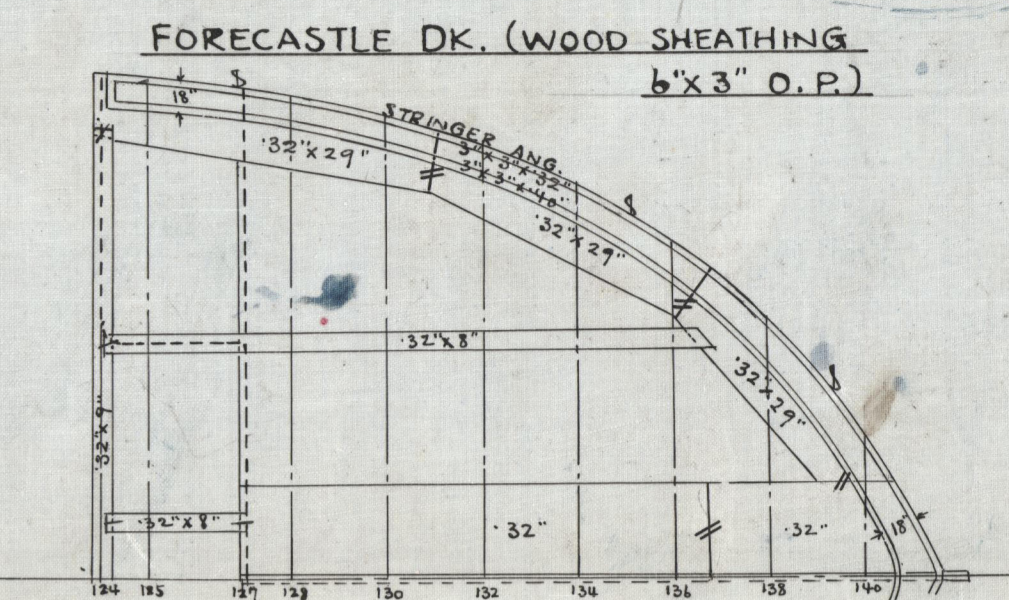
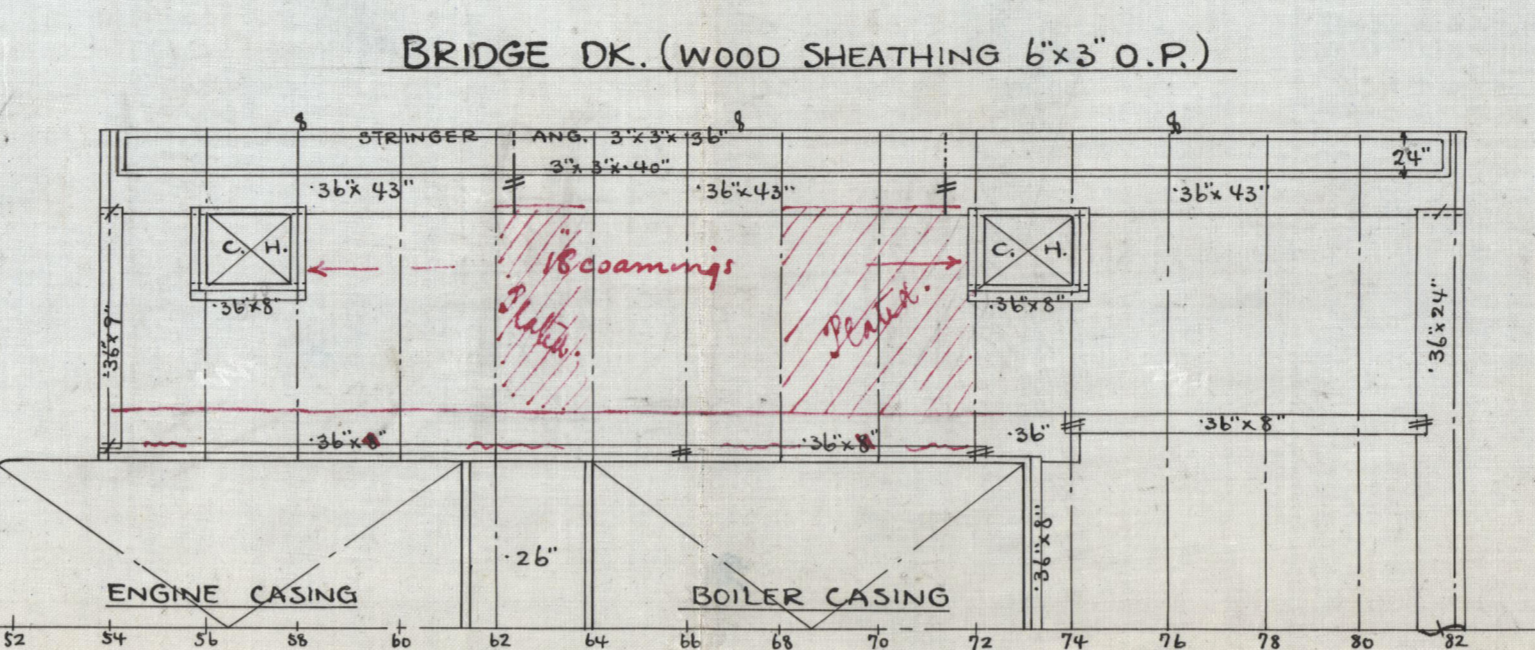
SCALE: 1/8"=1'-0".

WIDELY SPACED PILLARS.

POSITION AT (FR. NO.)	24	38	84	96	110	122
SCANTLING NUMBER	30x11x13.5=221	30x11x13.5=221	22x14x17.5=172	26x14x17.5=172	26x14x17.5=172	22x14x17.5=172
LENGTH OF PILLAR	21'-9"	21'-1 1/2"	6'-11 1/2"	6'-11 1/2"	6'-11 1/2"	6'-11 1/2"
RULE	TUBULAR	TUBULAR	TUBULAR	TUBULAR	TUBULAR	TUBULAR
SCANTLING	10x40	10x40	7x40	7x40	7x40	7x40
SCANTLING NUMBER			22x14x17.5=172	26x14x17.5=172	26x14x17.5=172	22x14x17.5=172
LENGTH OF PILLAR			12'-7 1/2"	13'-5 1/2"	14'-6 1/2"	15'-10"
RULE			TUBULAR	TUBULAR	TUBULAR	TUBULAR
SCANTLING			13x60	12x54	12x54	13x54

GIRDERS AT HEADS OF W. S. P.

POSITION IN (FR. NO.)	8-24	24-38	38-54	54-74	74-96	96-110	110-122	122-132
DEPTH OF BEAM	8"	8"	8"	7"	6"	6"	6"	6"
SCANTLING NO.	32x14x17.5=172	28x14x17.5=172	28x14x17.5=172	26x14x17.5=172	24x14x17.5=172	24x14x17.5=172	24x14x17.5=172	24x14x17.5=172
RULE	INTERCOSTAL 44	INTERCOSTAL 44	INTERCOSTAL 50	INTERCOSTAL 44	INTERCOSTAL 40	INTERCOSTAL 44	INTERCOSTAL 44	INTERCOSTAL 44
SCANTLING	10x32x56 L	9x32x56 L	11x32x56 L	11x32x56 L	11x32x56 L	11x32x56 L	11x32x56 L	11x32x56 L
DEPTH OF GIRDER	7" UNDER BEAM	7" UNDER BEAM	7" UNDER BEAM	5" UNDER BEAM	6" UNDER BEAM	6" UNDER BEAM	6" UNDER BEAM	6" UNDER BEAM
ACTUAL SCANTLING	INTERCOSTAL 50	INTERCOSTAL 44	INTERCOSTAL 50	INTERCOSTAL 44	INTERCOSTAL 44	INTERCOSTAL 44	INTERCOSTAL 44	INTERCOSTAL 44
SCANTLING	11x32x56 L	11x32x56 L	11x32x56 L	11x32x56 L	11x32x56 L	11x32x56 L	11x32x56 L	11x32x56 L
DEPTH OF GIRDER	7" UNDER BEAM	7" UNDER BEAM	7" UNDER BEAM	5" UNDER BEAM	6" UNDER BEAM	6" UNDER BEAM	6" UNDER BEAM	6" UNDER BEAM
ACTUAL SCANTLING	INTERCOSTAL 50	INTERCOSTAL 44	INTERCOSTAL 50	INTERCOSTAL 44	INTERCOSTAL 44	INTERCOSTAL 44	INTERCOSTAL 44	INTERCOSTAL 44
SCANTLING	11x32x56 L	11x32x56 L	11x32x56 L	11x32x56 L	11x32x56 L	11x32x56 L	11x32x56 L	11x32x56 L



Harima Dock Co. Yard No. 5.

Construction Profile,

Deck and Inner Bottom.

S.S. Saito Maru" Kobe Rpt No 2080



© 2020

Lloyd's Register
Foundation

W1265-0148