

# DONKY BOILER FOR No.5.

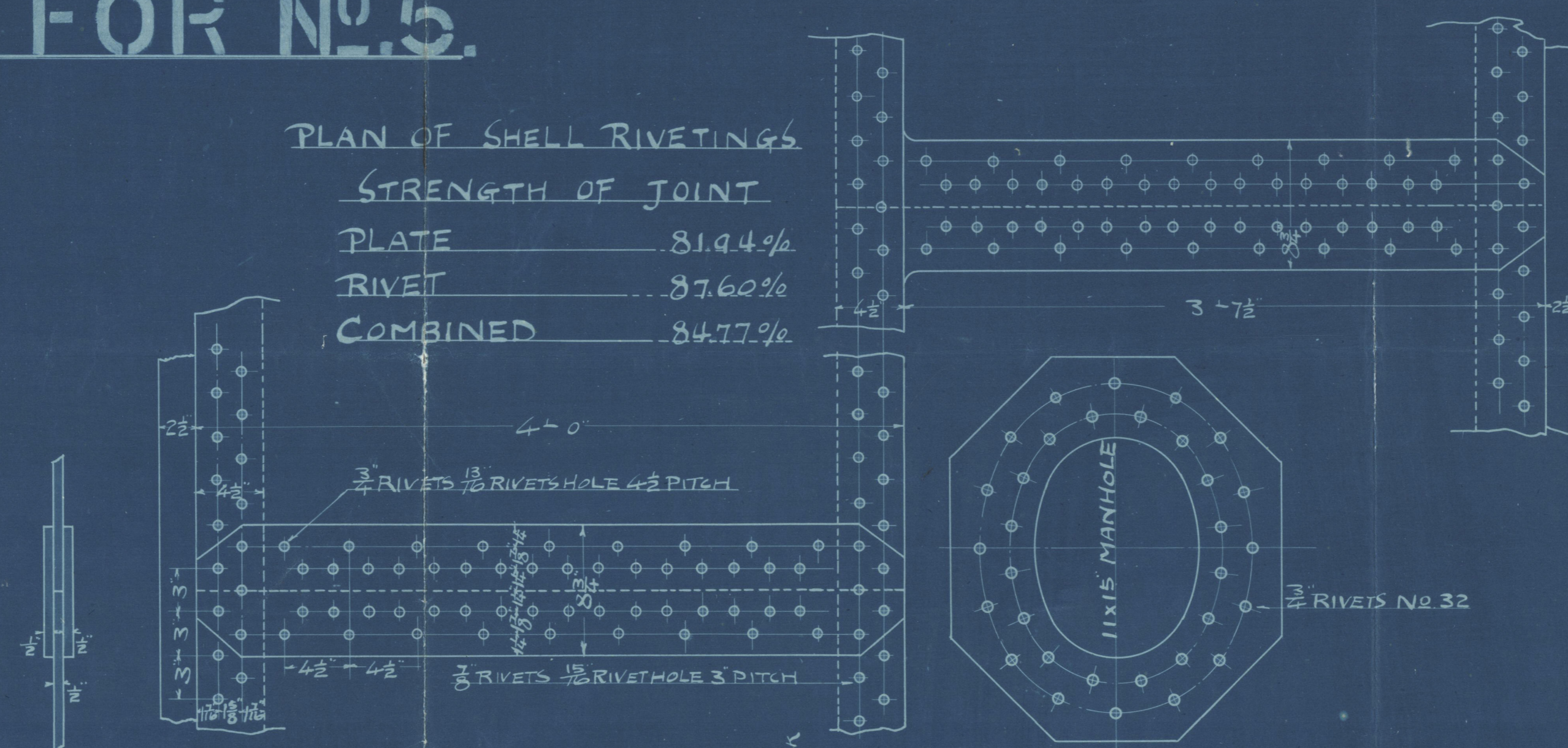
SCALE,  $1\frac{1}{2}'' = 1 \text{ FOOT}$ .

WORKING PRESSURE	120 LBS/
HEATING SURFACE	394.11 SQ. FT.
FURNECE	23.28
TUBES	321.62
COMBUSTION	39.41
TUBE PLATES	9.80
GRATE AREA	11.45
RATIO OF H.S. AND G.A	34.42

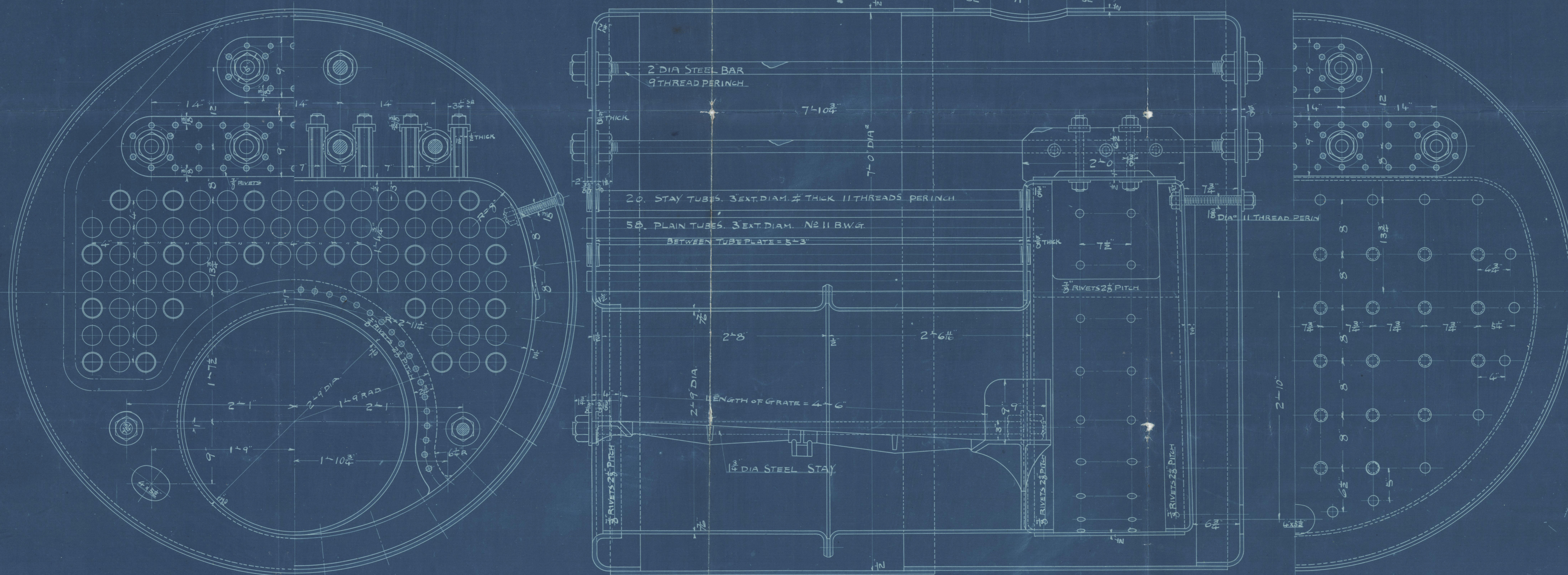
## PLAN OF SHELL RIVETING

### STRENGTH OF JOINT

PLATE	81.94%
RIVET	87.60%
COMBINED	84.77%



1-OFF.



No.5

補助汽罐

位ヲ以テ1吹トス

HARIMA DOCK YARD  
Co., LTD.

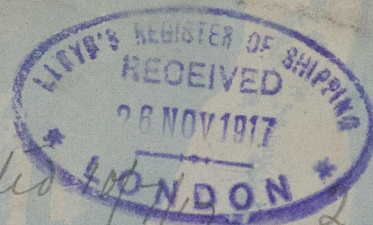
\* MAR 26 1916 \*

6, NEAR KOBE,  
HARIMA, JAPAN.



Lloyd's Register  
Foundation  
CHS-59700

Taito Maru.  
Harima Dockyard. No 5  
Donkey Boiler  
Roh. Rpt No 2080



Tested 10/11/17

S.S.

2 s. Valves  
2 1/4" dia

Not good

Cu stem pipes

Retested 14/7/17 gd



© 2020

Lloyd's Register  
Foundation

W1265-0147