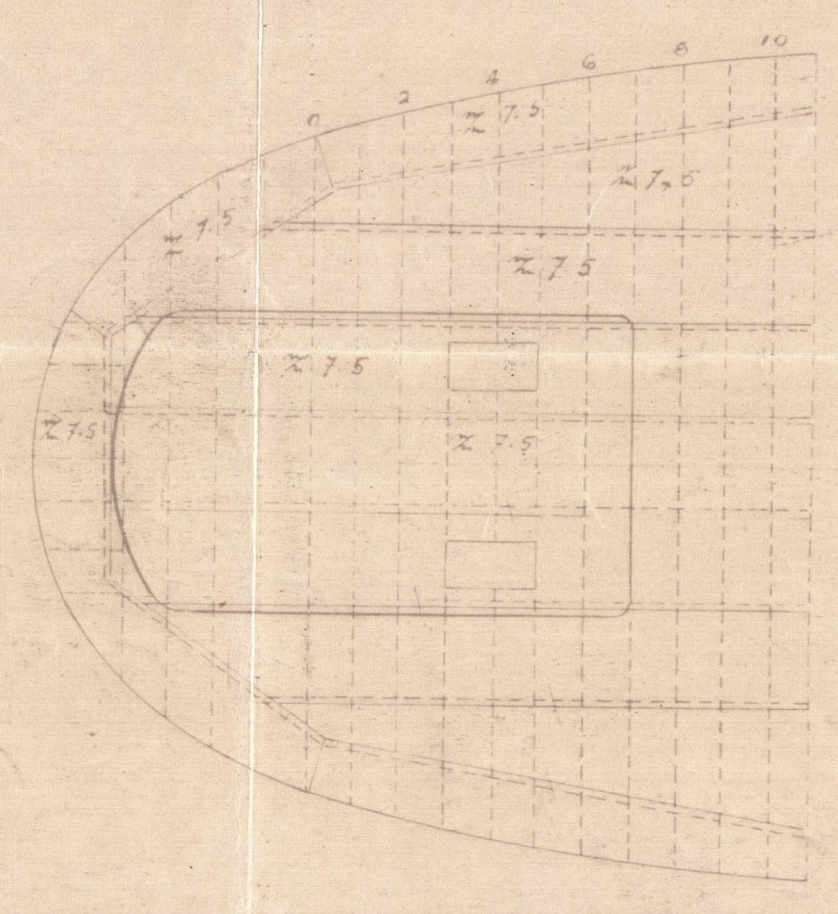


18.6.20.  
28.4.21 (C.B.12)

PIROSCAFO C.B. 13, and C.B. 12.  
Modification carried out to the S.S. "Sulbia Prince", ex C.B. 12 are those marked in blue pencil or red ink  
PIANO DEI FERRI

Scala 1:100

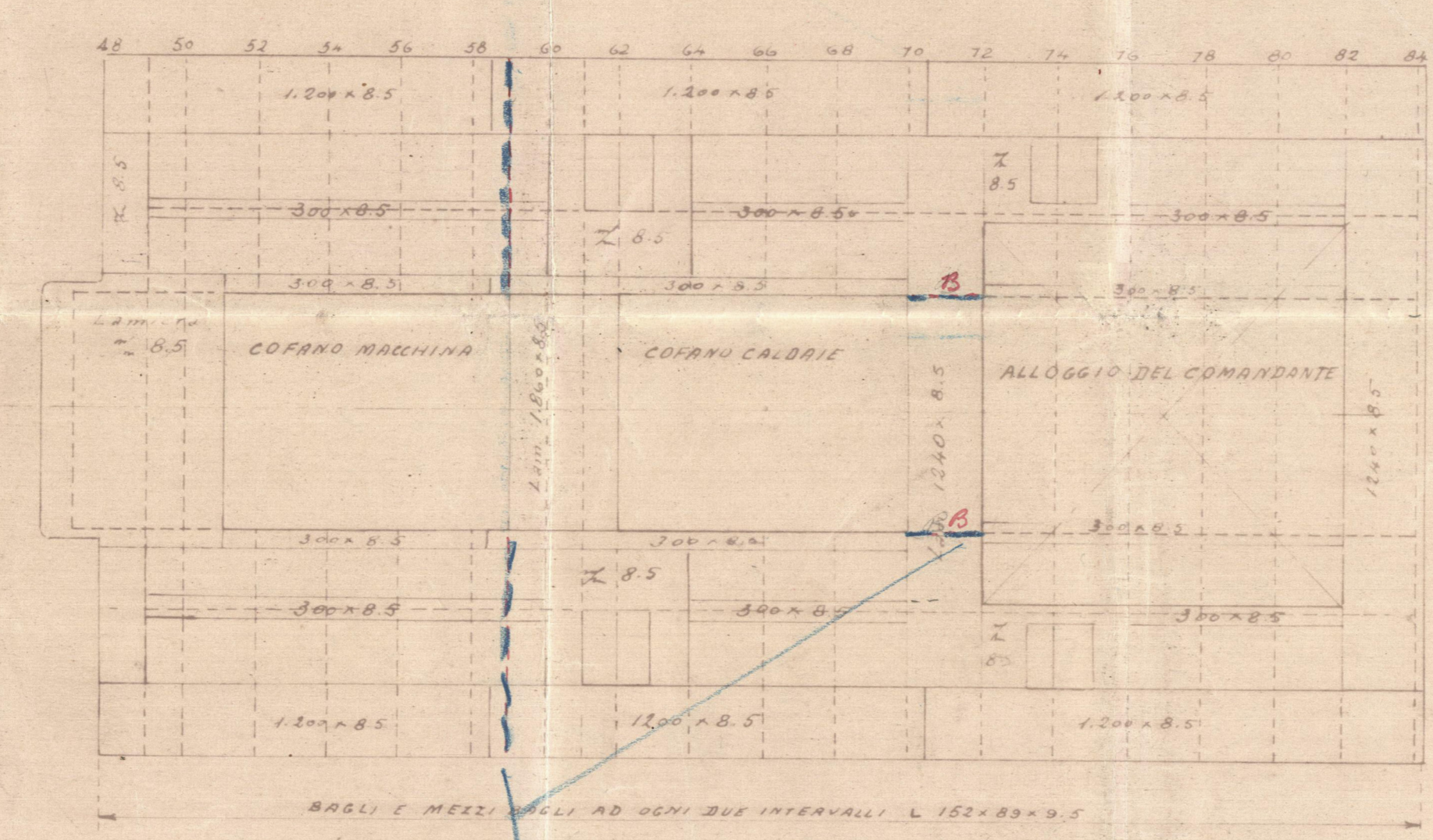
CASSERO DI POPPA



DIMENSIONI PRINCIPALI

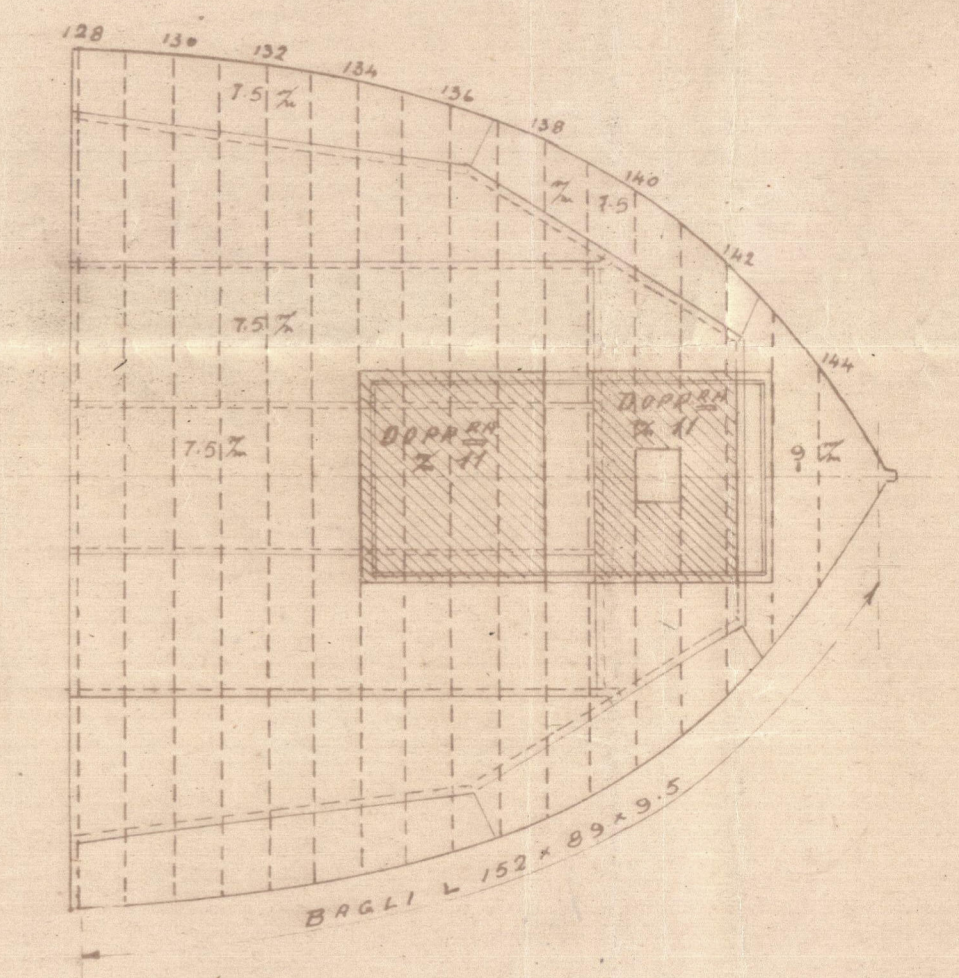
LUNGHEZZA FUORI Dritti AL GALLEGGIAMENTO M 89.90  
LARGHEZZA MASSIMA FUORI OSSATURA 12.00  
PUNTALE A MURATA DALLA L.C. 8.00

CASSERO CENTRALE

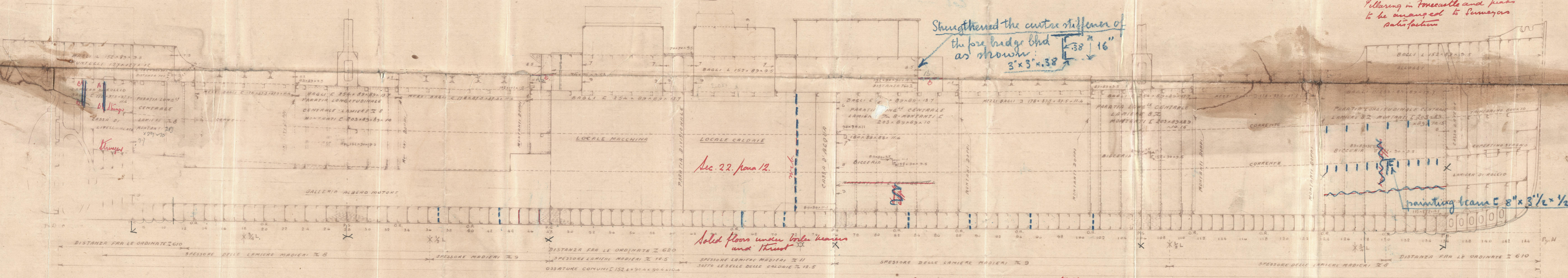


Beams supported by deckhouse bulkheads

CASSERO DI PRUA



SEZIONE LONGITUDINALE



Strengthened the center stiffener of the fore bridge beam as shown. 3'3" x 38" x 16"

Reinforcing in fore and aft peaks to be arranged to summer's satisfaction

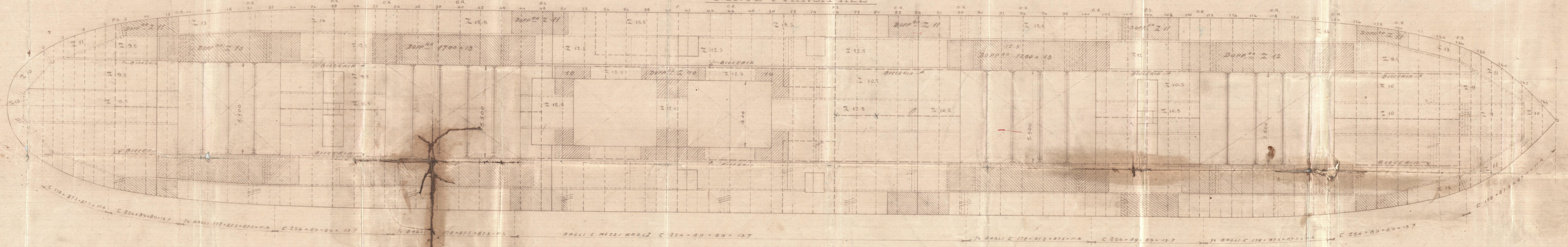
Sec 22, para 12.

Solid floor under fore beam and thrust

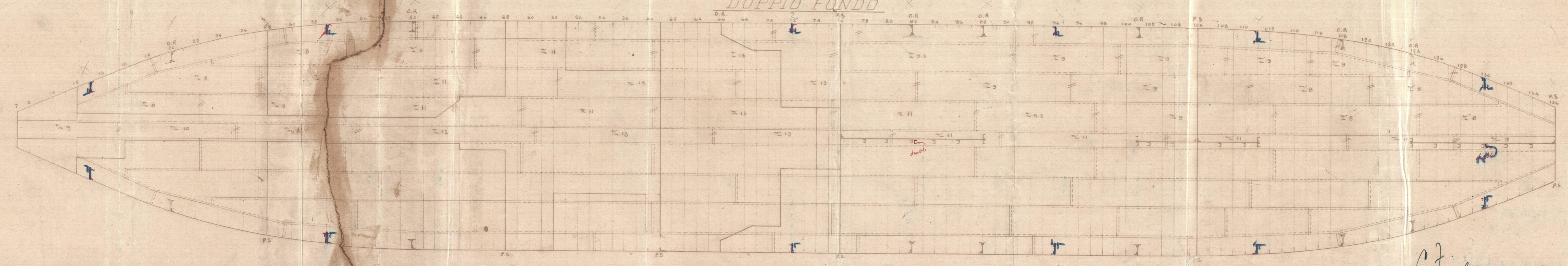
Painting beam 5'8" x 3'1/2" x 1/2"

Plans of Bulkheads, Painting Arrangements and Stiffening in bottom forward and after end framing to be submitted

PONTE PRINCIPALE



DOPIO FONDO



554

C. 2. 20.  
17.6.20.

C.B. 13. + 12

Profile

W1265-0068



© 2020

Lloyd's Register  
Foundation

Bacini S.M.

C.B. #

S/ Julia Pace

Mar. 2013

Profile



W1265-0068



© 2020

Lloyd's Register  
Foundation