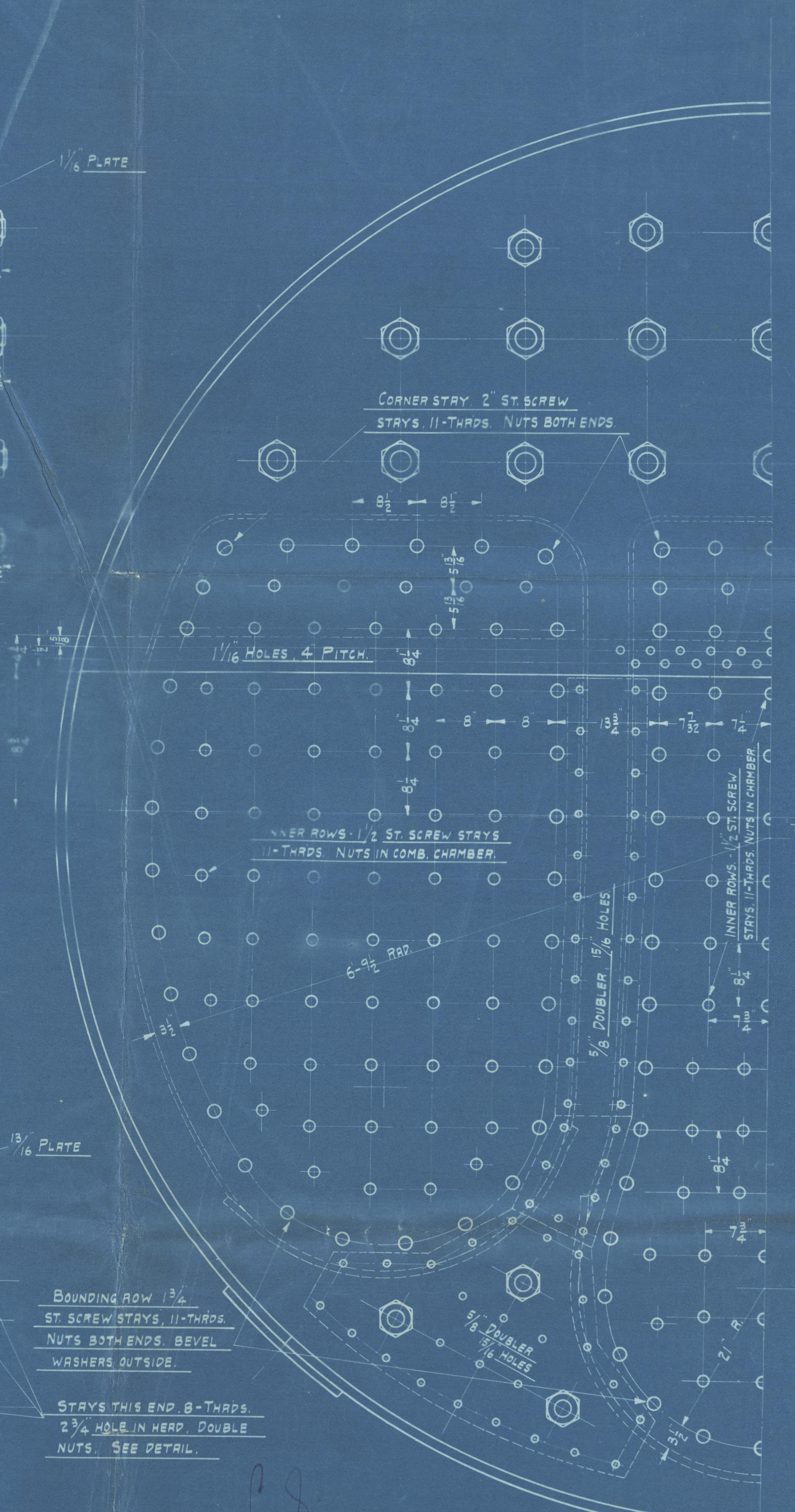
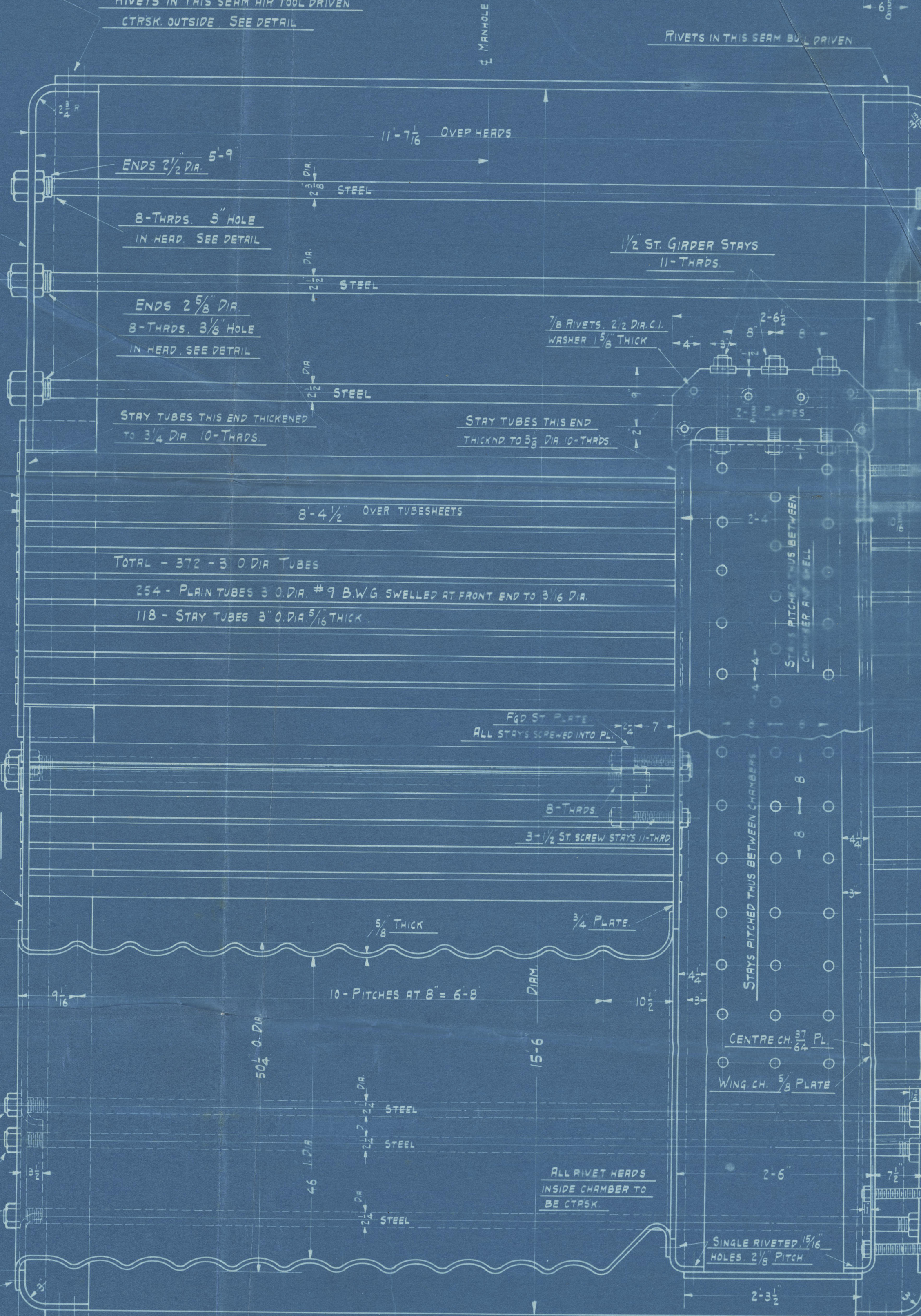
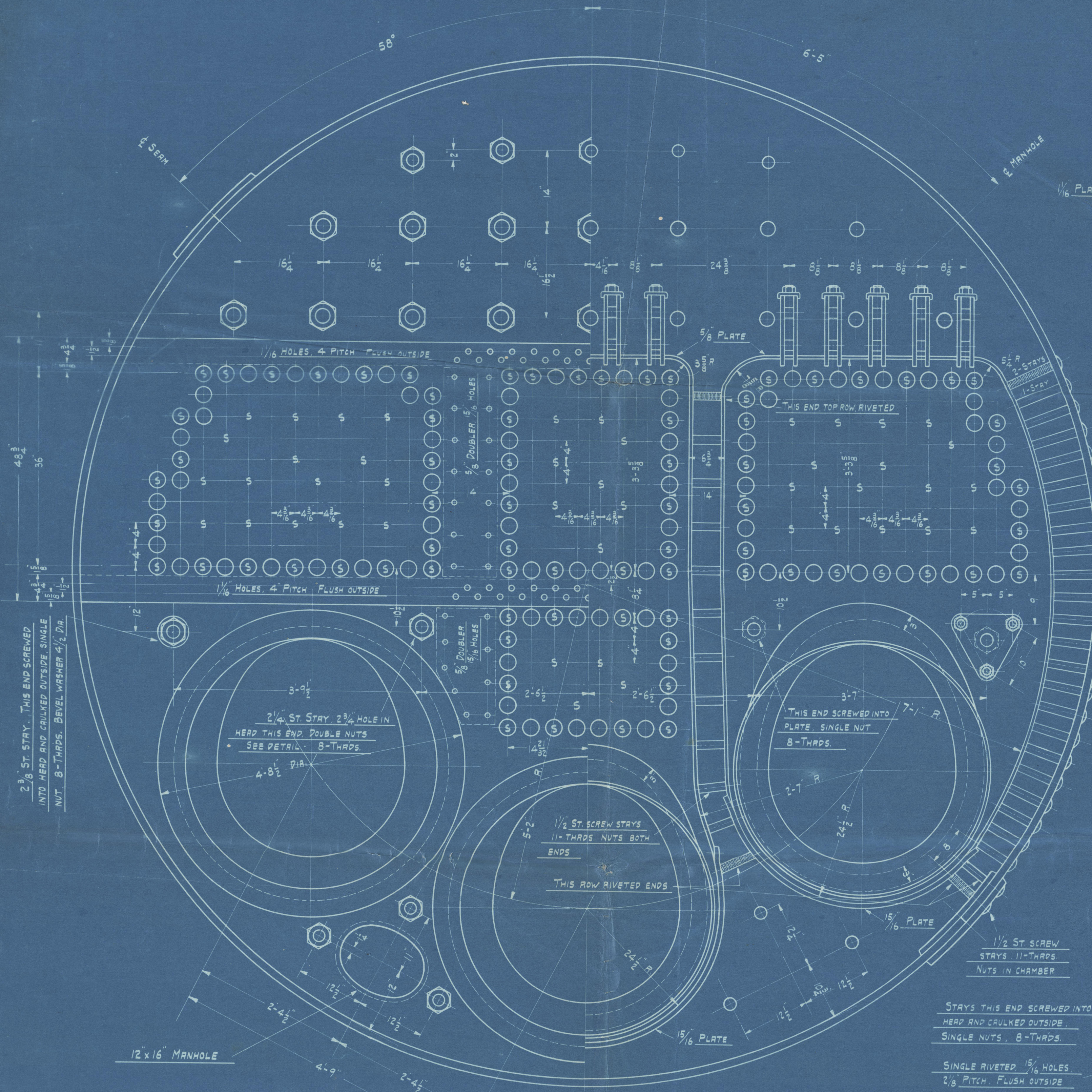
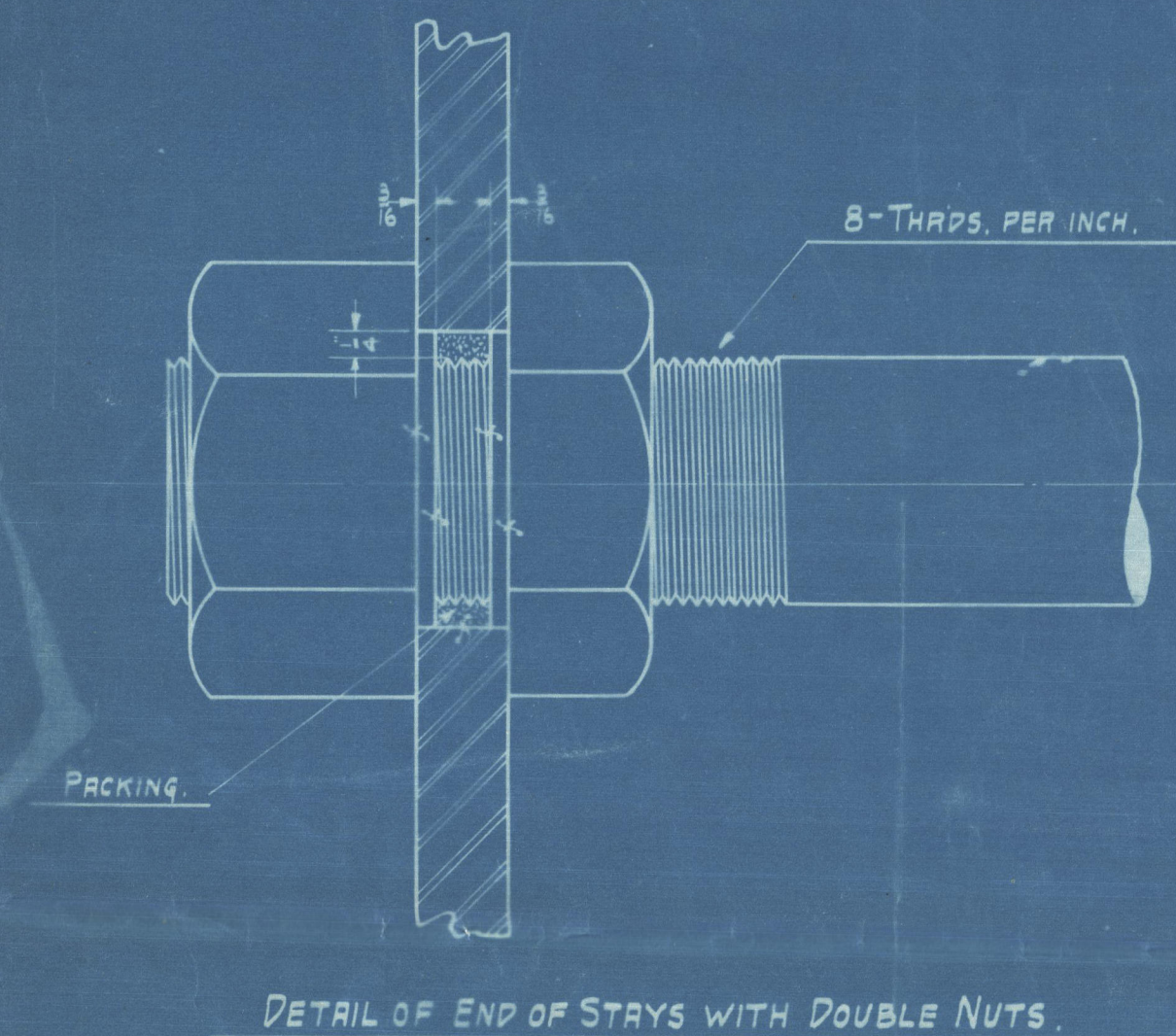
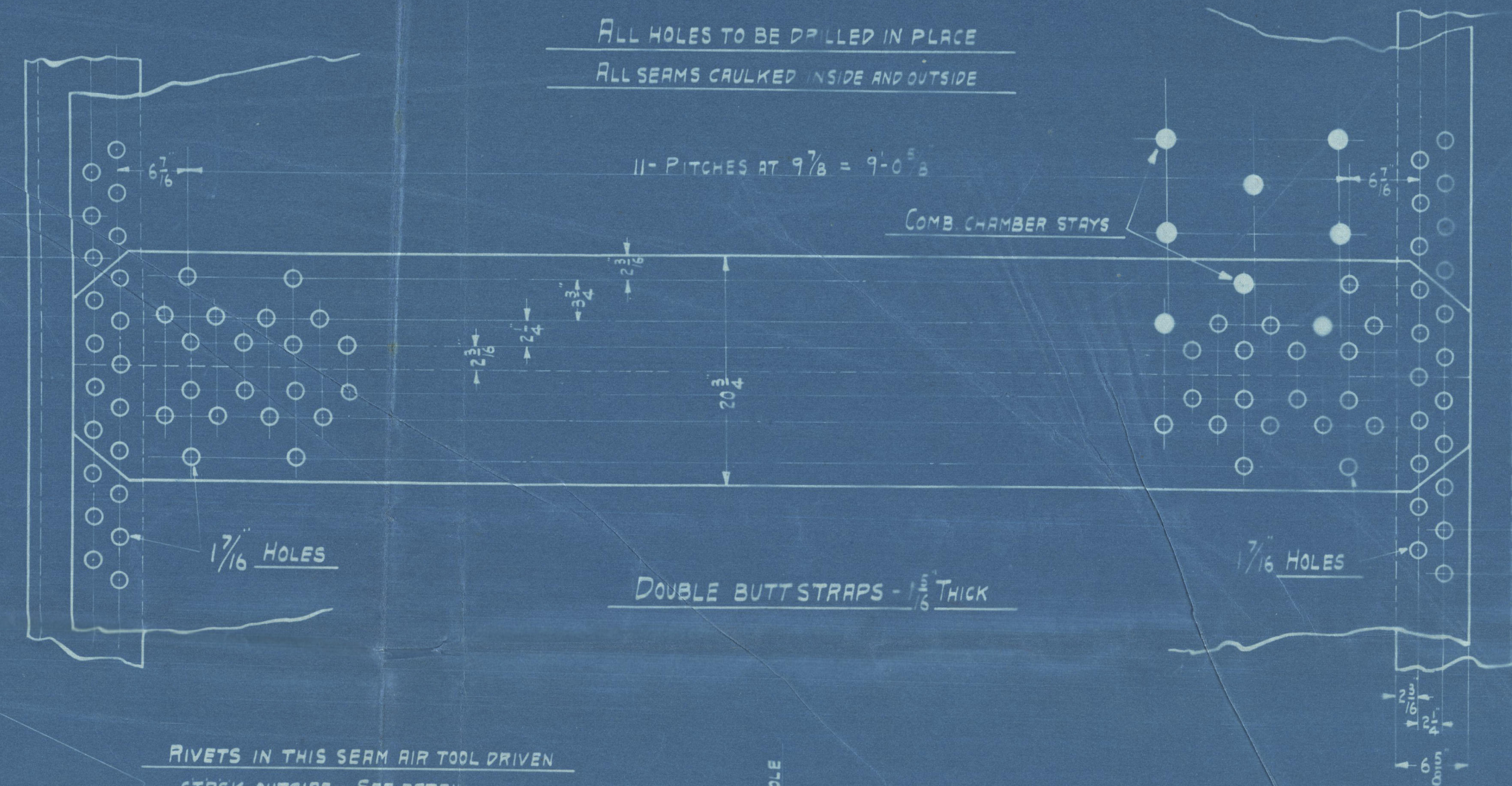
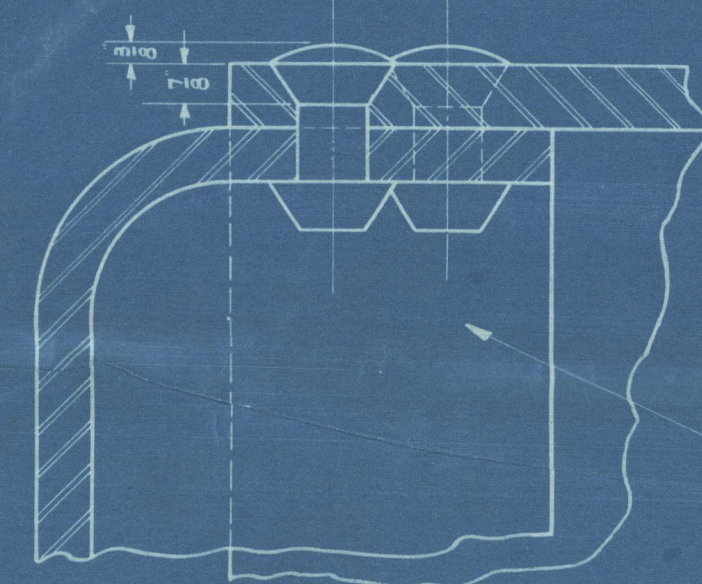


HEATING SURFACE  
 TUBES - - - 2406 SQ. FT.  
 FURNACES - - 162  
 COMB. CHAMBERS - 287  
 TOTAL - 2855 SQ. FT.  
 GRATE AREA - 74.15 SQ. FT.  
 RATIO - 38.2



SIX BOILERS REQ. FOUR AS SHOWN TWO OTHER HAND

APPROVED  
 JUN 1 1918  
 NEW YORK

15'-6" DIA. X 11'-6" LONG 180 W.P.	
SCOTCH MARINE BOILER FOR	
HALIFAX SHIPYARDS LTD.	
CANADIAN ALLIS-CHALMERS, LIMITED	
TORONTO, ONT.	
SCALE 1" = 1'-0"	DRAWN BY B. J. JONES
DATE APRIL - 8 - 1918	TRACED BY B. J. JONES
CHECKED BY B. J. JONES	DRAWING NO. 51651
APPROVED BY B. J. JONES	W. 1258-0252

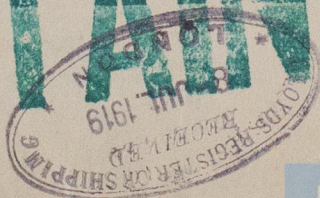


Canadian Explorer

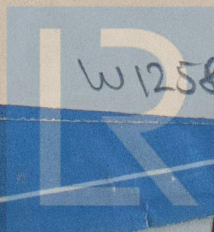
Halifax Shipyard  
1 1/2 vessels

(Orders  
Amended)

RETAIN



© 2020  
W1258-0252



Lloyd's Register  
Foundation