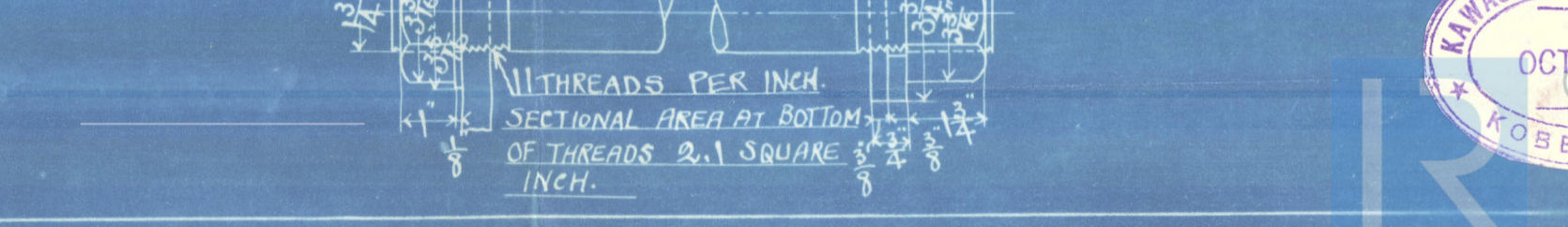
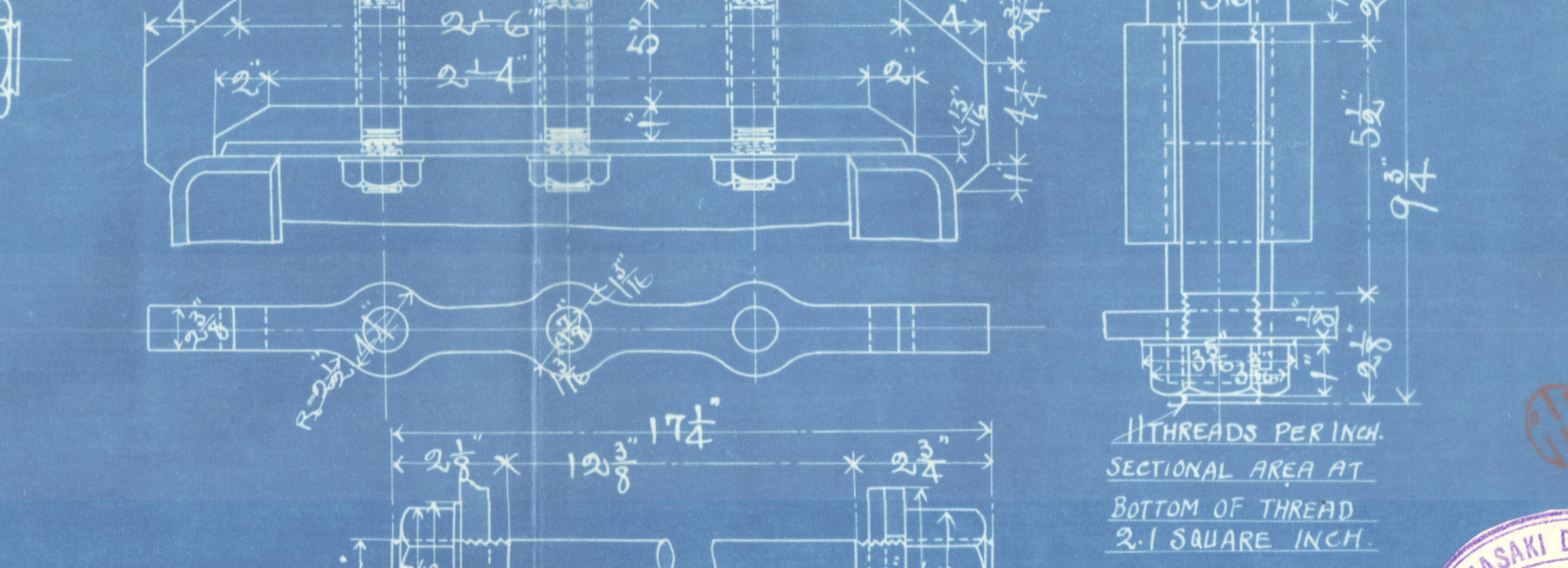
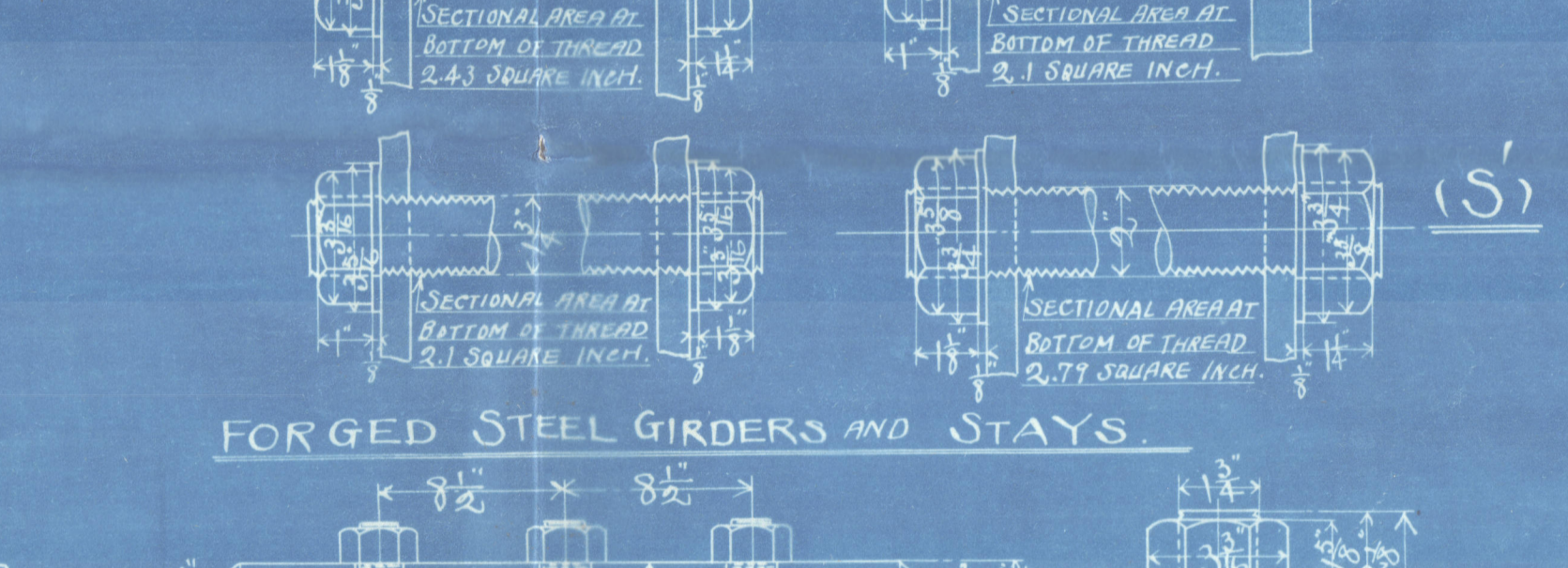
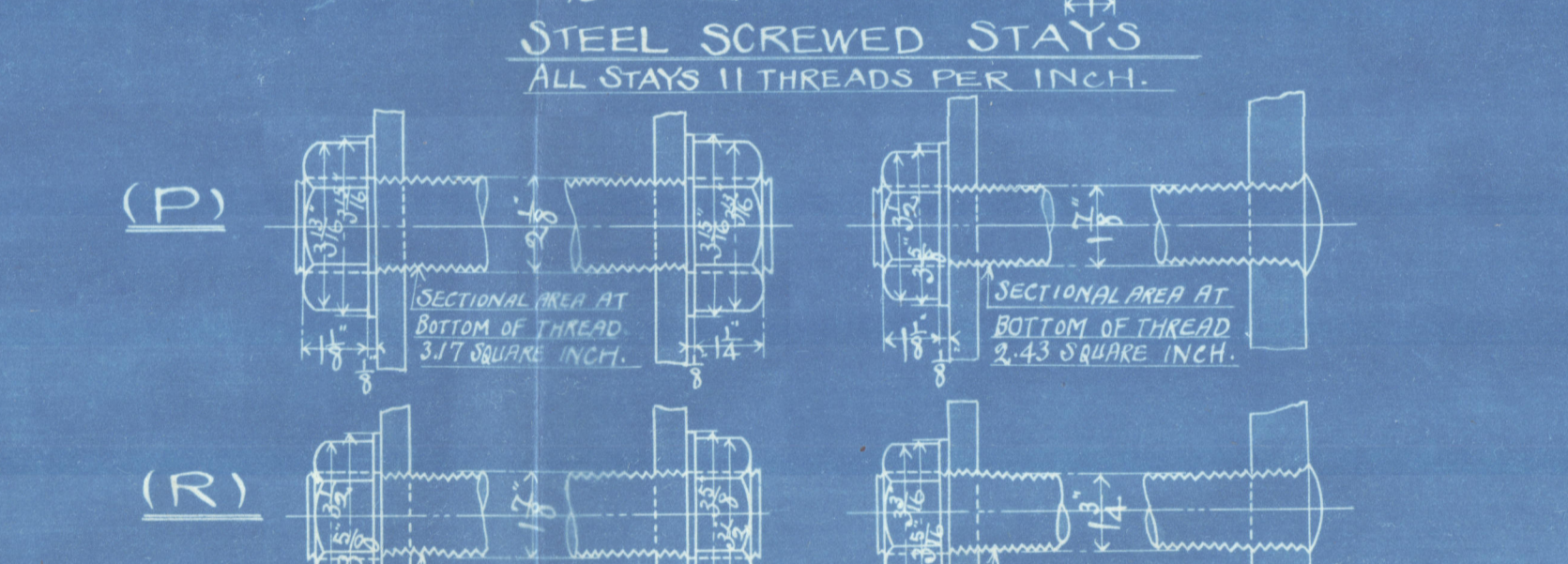
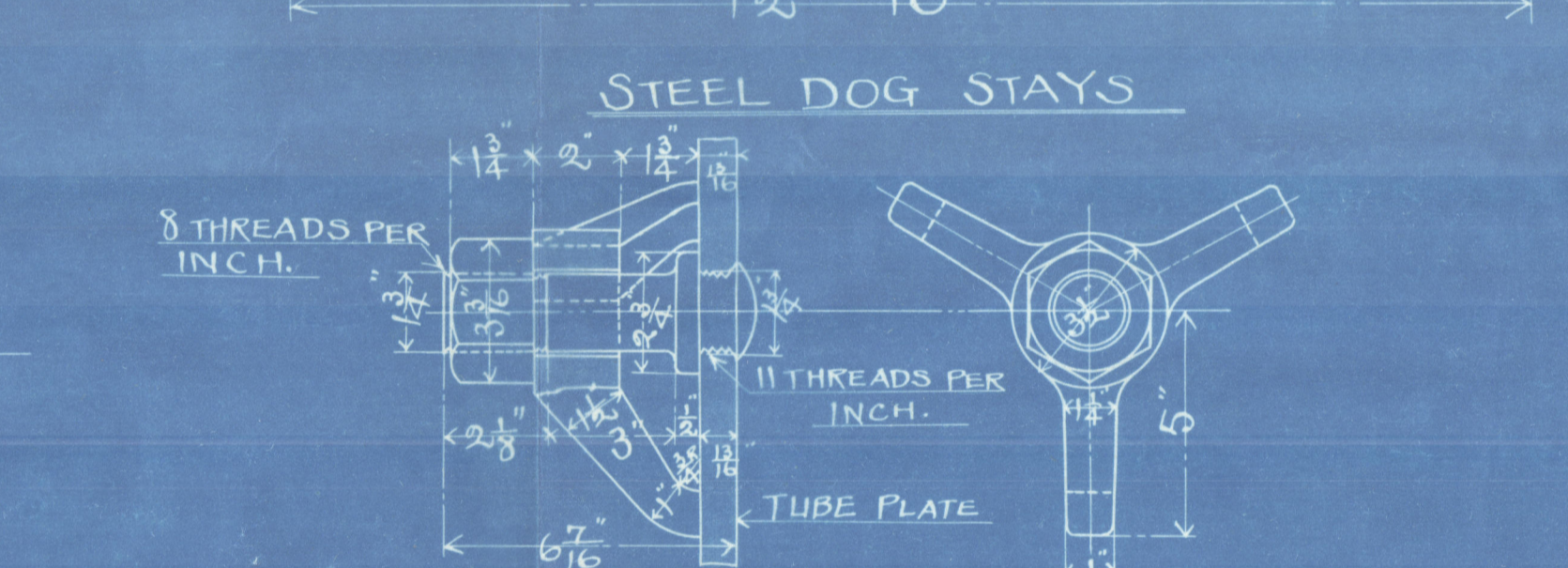
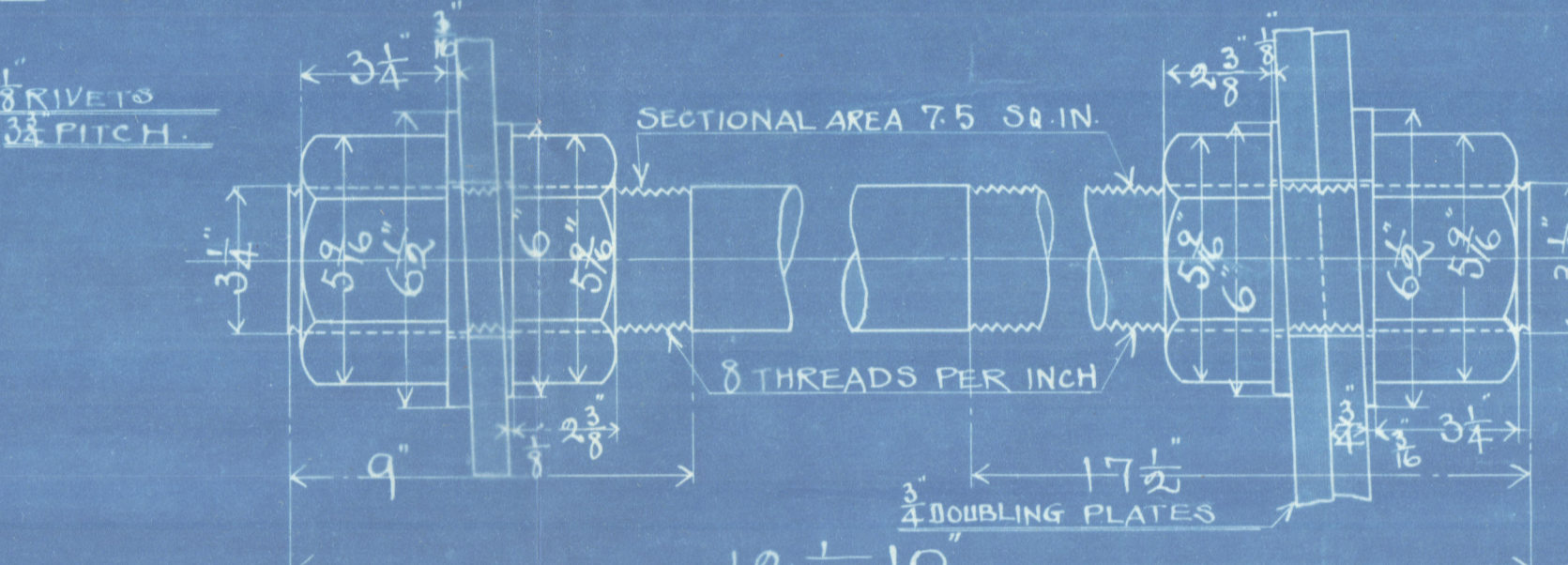
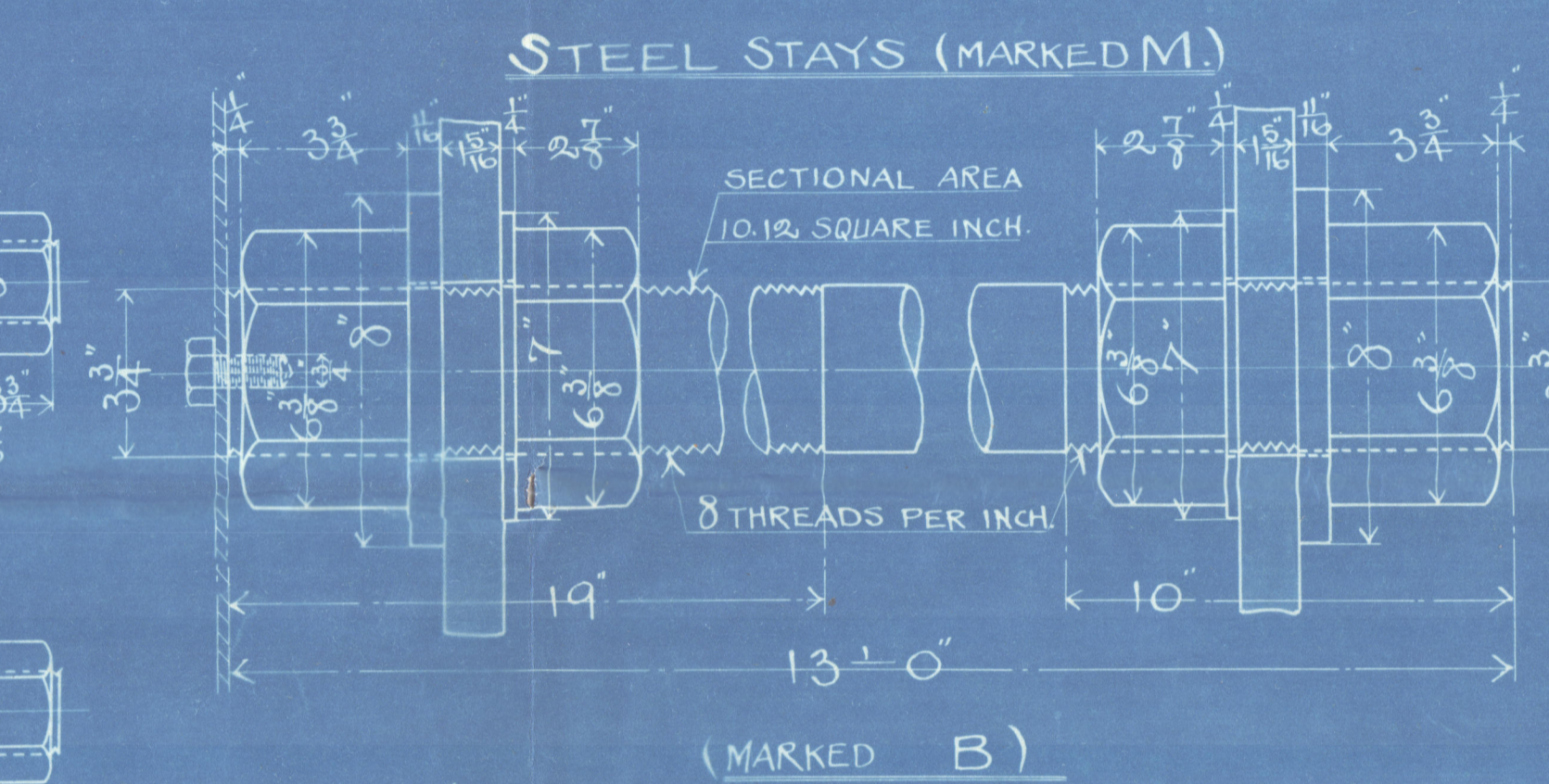
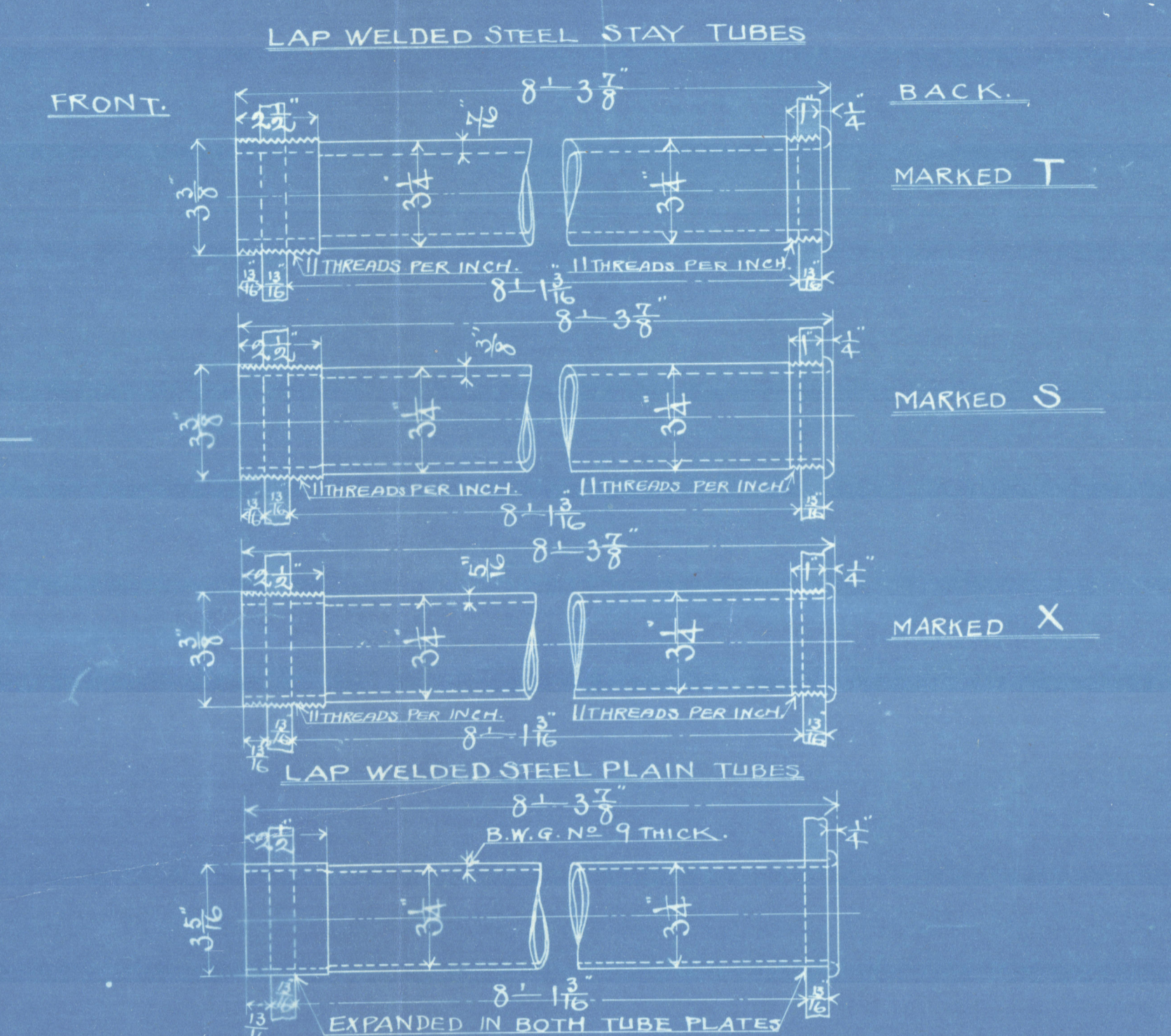
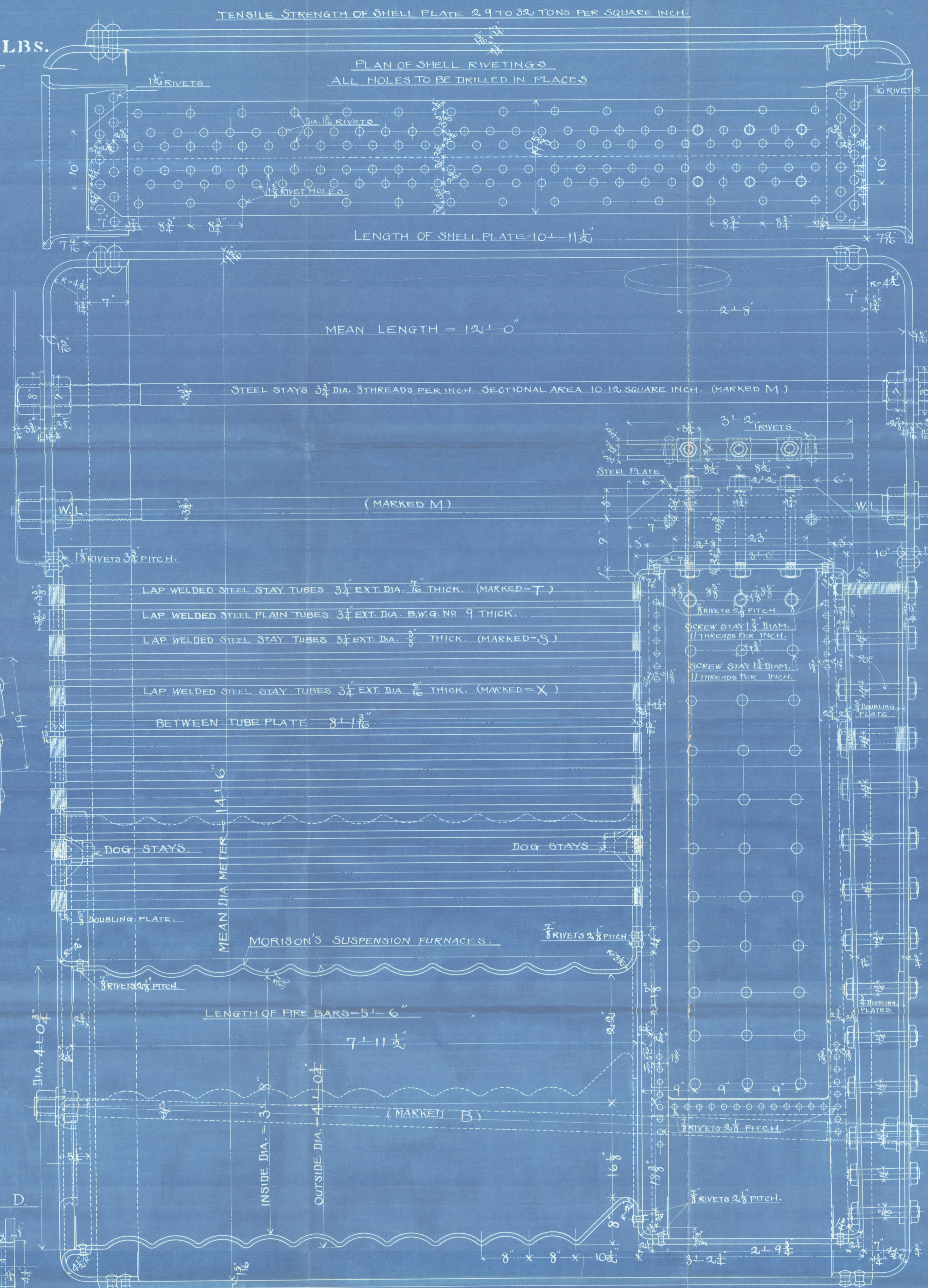
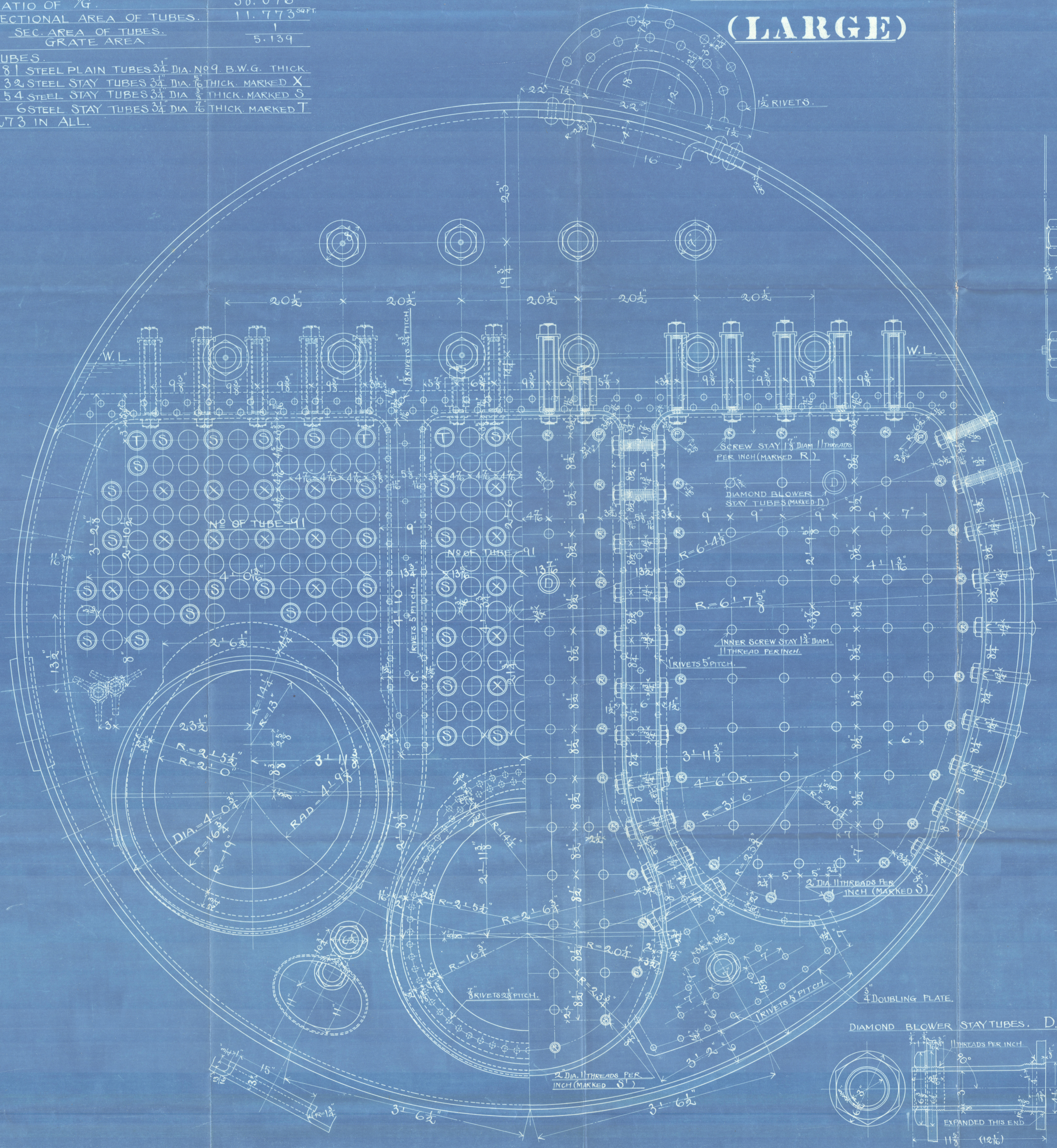


**DIA. 14'-6" x 12'-0" LONG.**  
**WORKING PRESSURE 200 LBS.**  
**SCALE 1/2 IN. TO 1 FT.**

**2 THUS.**  
**(LARGE)**

HEATING SURFACES.	1881.221 <sup>50</sup> FT.
TUBES.	161.053 "
FLUES.	216.345 "
FIRE BOXES.	46.205 "
BACK TUBE PLATES.	2304.824 "
TOTAL.	60.500 "
GRATE AREA.	38.096
RATIO OF 1/2 G.	11.773 <sup>50</sup> FT.
SECTIONAL AREA OF TUBES.	1
SEC. AREA OF TUBES.	5.139

TUBES.  
 181 STEEL PLAIN TUBES 3/4" DIA. NO. 9 B.W.G. THICK.  
 32 STEEL STAY TUBES 3/4" DIA. 1/2" THICK. MARKED X  
 54 STEEL STAY TUBES 3/4" DIA. 3/8" THICK. MARKED S  
 6 STEEL STAY TUBES 3/4" DIA. 1/4" THICK. MARKED T  
 273 IN ALL.



KAWASAKI DOCKYARD Co., LTD.

Builders No.	398
Large boiler.	
S. S. "War Lion"	
Drawing No.	

*Kobe Rpt. No. 2087.*

LLOYD'S REGISTER  
16-a Harima-machi,  
KOBE.

RETAIN



© 2020

Lloyd's Register  
Foundation

W1257-0114