

# No 8.

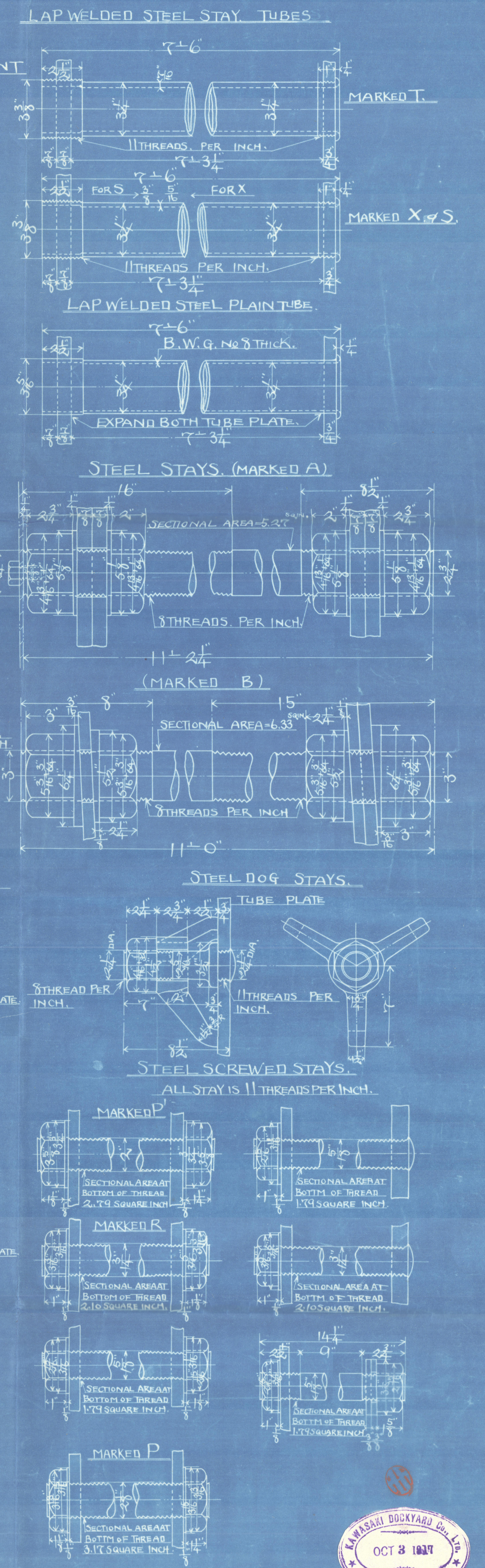
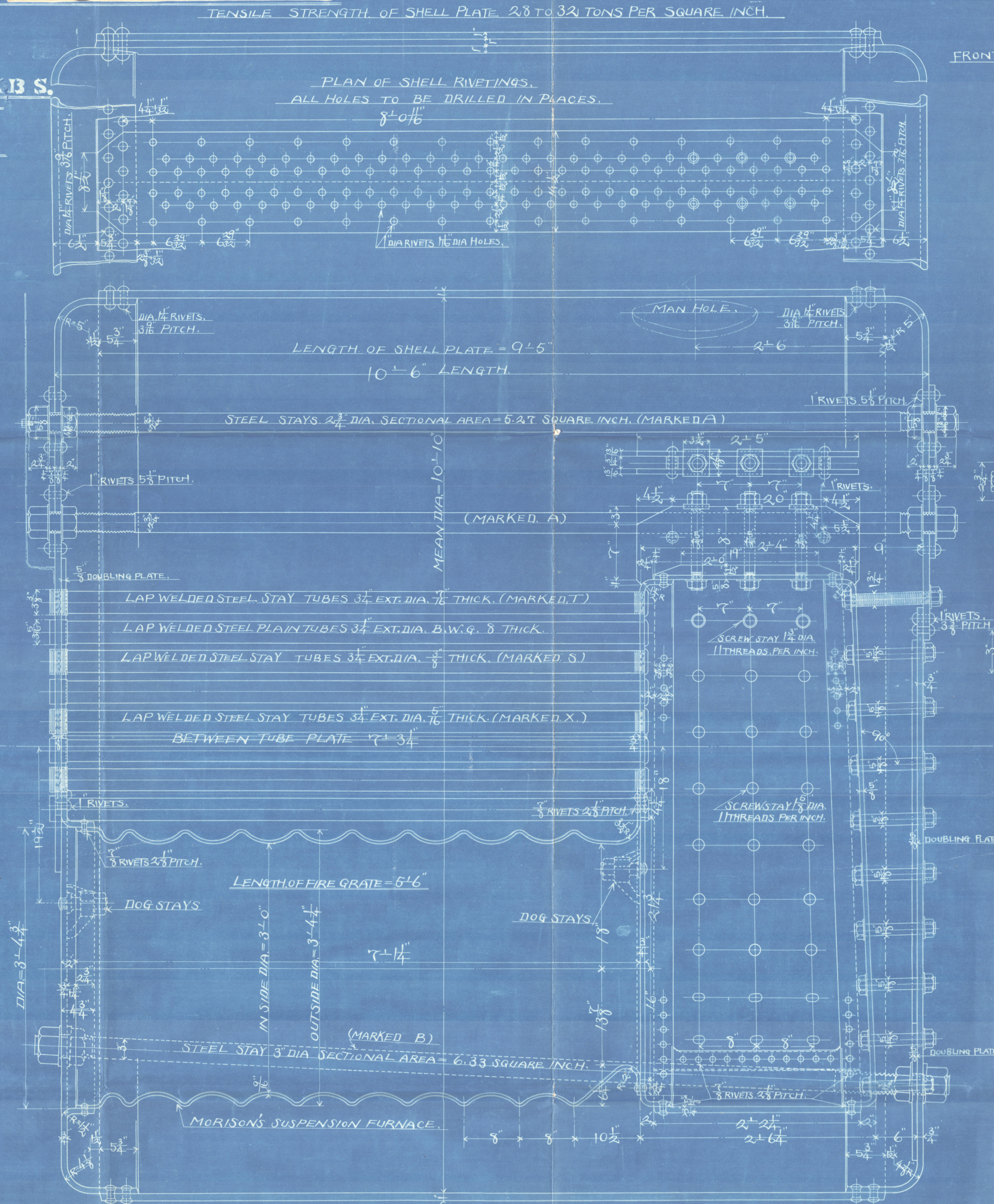
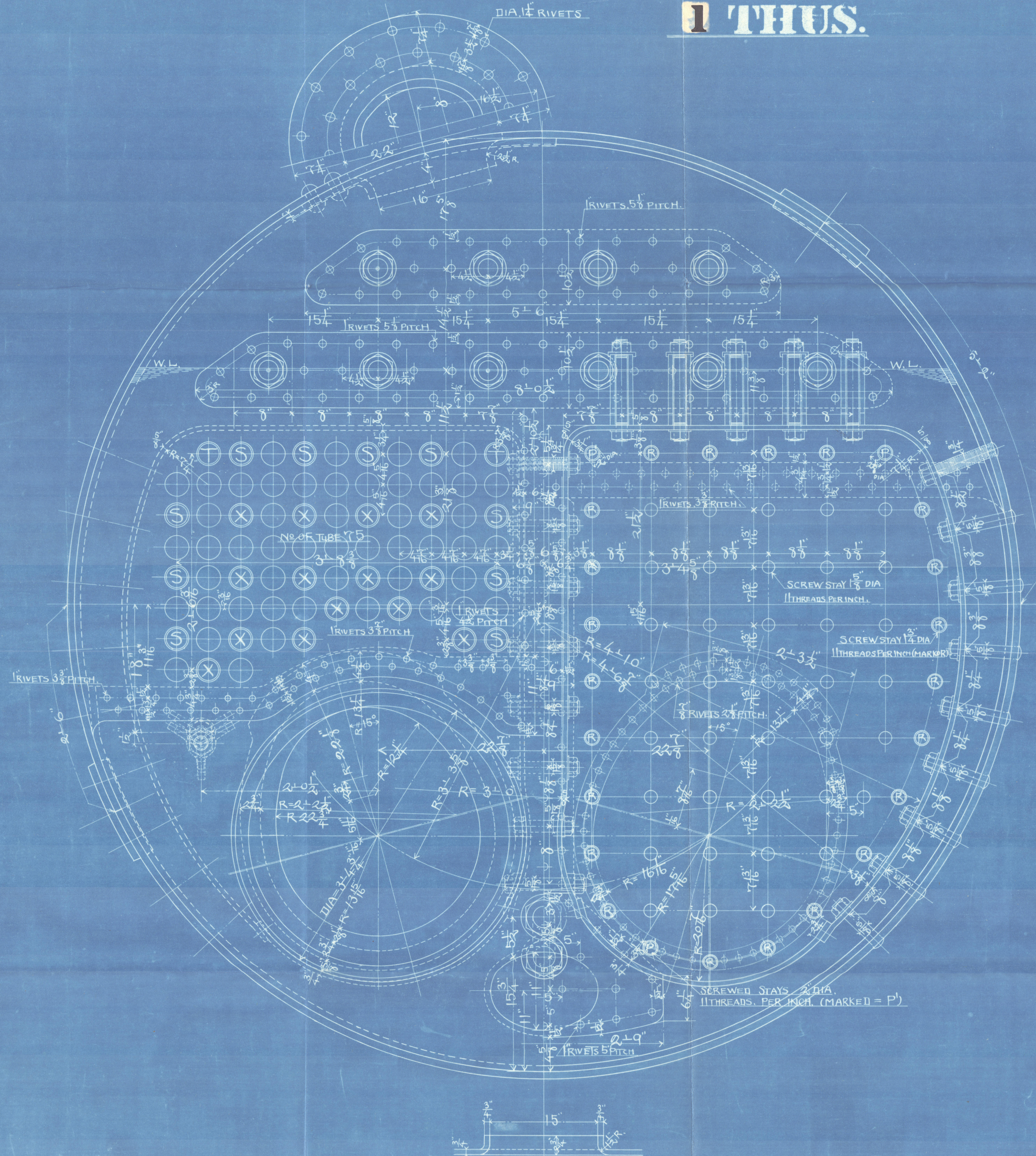
# STEEL BOILER (SMALL) FOR BUILDERS No 398

HEATING SURFACES.	927.958 <sup>sq ft</sup>
TUBES.	74.532
FIRE BOXES.	102.187
BACK TUBE PLATES.	27.802
TOTAL.	1132.479
GRATE AREA.	33.000

RATIO $H/G$	34.318
SECTIONAL AREA OF TUBES.	642.154 <sup>sq in</sup>
GRATE AREA	5.139

TUBES.	93 STEEL PLAIN TUBES 3 1/4" DIA. NO. 8 B.W.G. THICK.
	4 STEEL STAY TUBES 3 1/4" DIA. NO. 8 B.W.G. THICK (MARKED T)
	20 STEEL STAY TUBES 3 1/4" DIA. NO. 8 B.W.G. THICK (MARKED S)
	2 1/2 STEEL STAY TUBES 3 1/4" DIA. NO. 8 B.W.G. THICK (MARKED X)
	150 IN ALL.

**DIA. 10'-10" X 10'-6" LONG.**  
**WORKING PRESSURE 200 LBS S.**  
**SCALE INCHES TO A FOOT.**  
**1 THUS.**



KAWASAKI DOCKYARD CO. LTD.  
OCT 8 1927  
KOBE, JAPAN



KAWASAKI DOCKYARD Co., LTD.

Builders No. 398

Small boiler.

S.S. "Wardion"

Drawing No.

Kobe, Rpt. No. 2087

LLOYD'S REGISTER  
16-a Harima-machi,  
KOBE.

RETAIN



© 2020

Lloyd's Register  
Foundation

W1257-0118