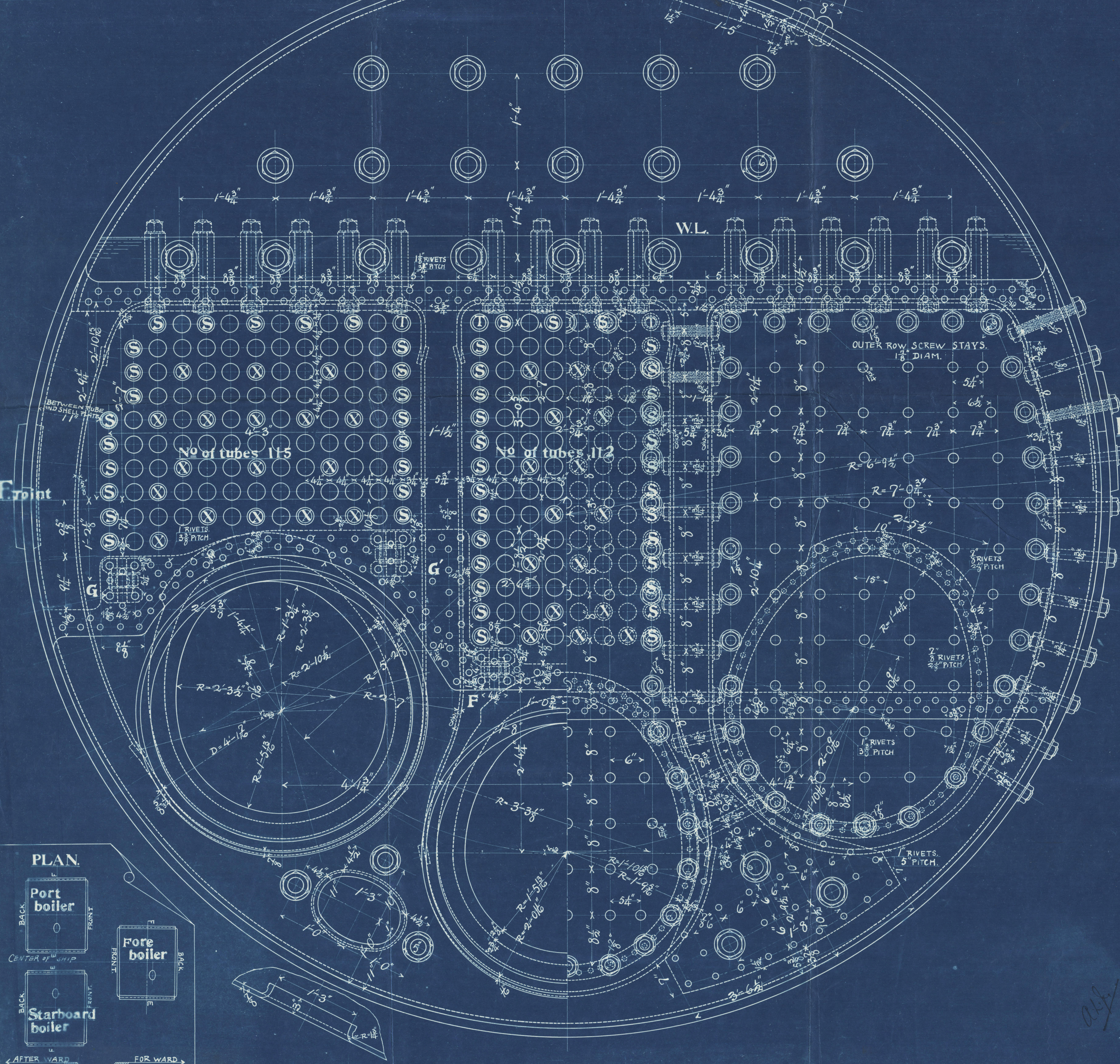


# No 1.

Heating surface.	2061.18
tubes.	156.14
flues.	224.23
fire boxes.	57.83
back tube plates.	2490.38
Total.	60.37
Grate area.	41.40
Ratio of H/A.	114.9
Sectional area of tubes.	5.25
sec. area of tubes	
grate area	

Tubes.  
 216 Iron drain tubes 3" dia \* 9 B.W.G. thick.  
 49 Iron stay tubes 2 1/2" dia \* 1/2" thick, marked X.  
 73 Iron stay tubes 2 1/2" dia \* 3/8" thick, marked S.  
 4 Iron stay tubes 2 1/2" dia \* 1/2" thick, marked T.  
 342 in all.



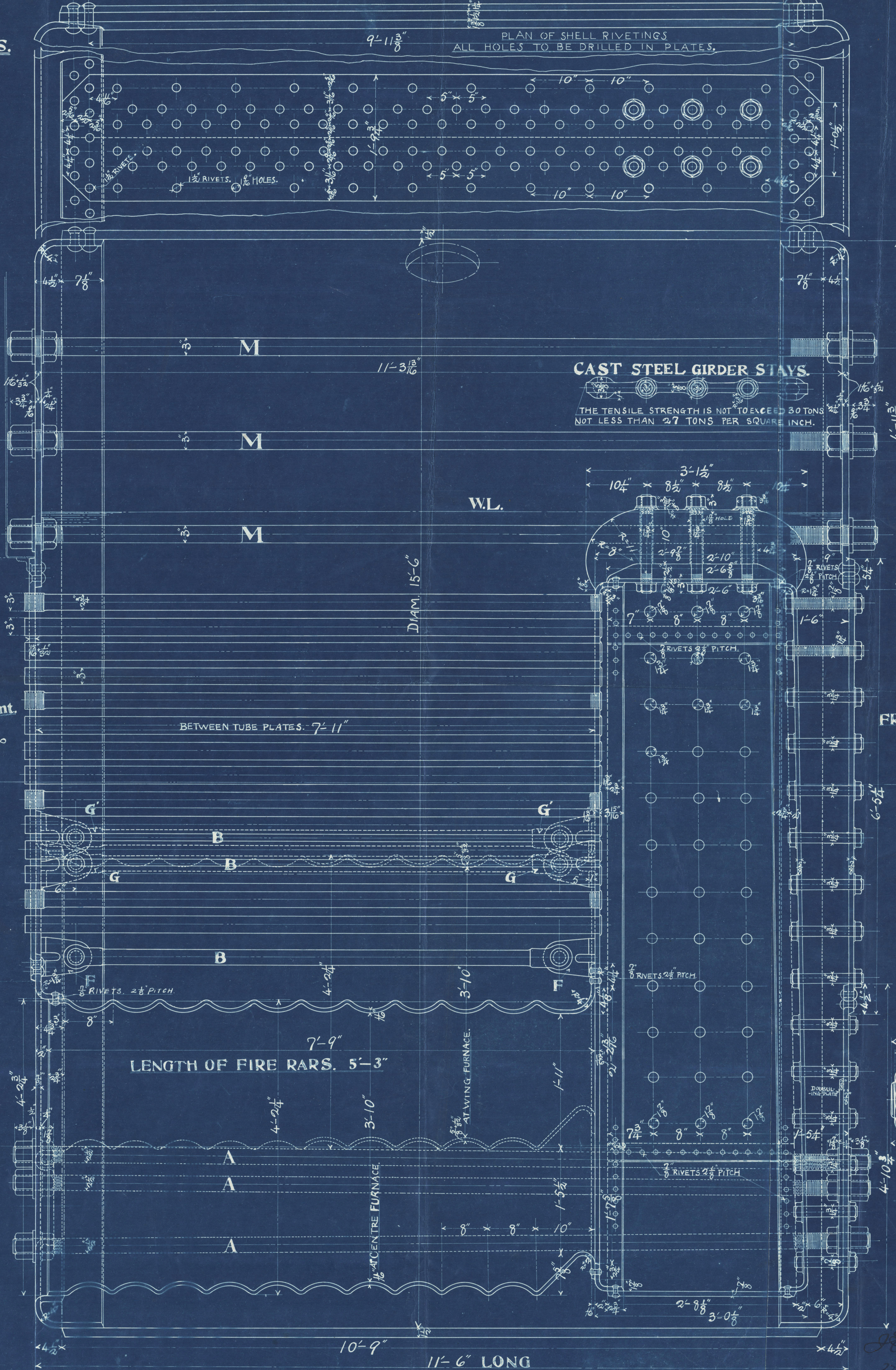
PLAN

Port boiler  
 Starboard boiler  
 Fore boiler

AFTER WARD FOR WARD

## STEEL BOILERES for BUILDERS No 297, 298 & 299.

DIA 15'-6" x 11'-6" LONG.  
 WORKING PRESSURE 200 LBS.  
 SCALE 1 1/2 INCH TO A FOOT.

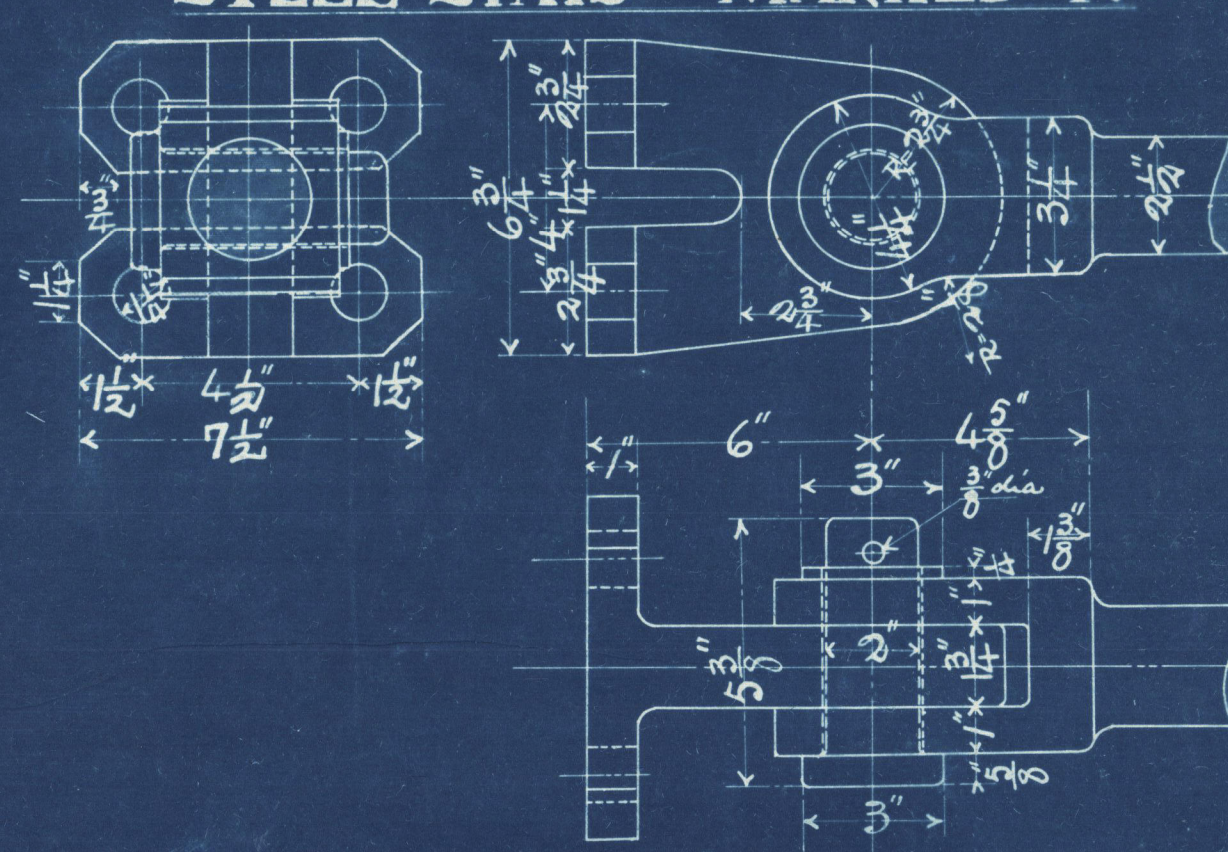


PLAN OF SHELL RIVETINGS  
 ALL HOLES TO BE DRILLED IN PLATES.

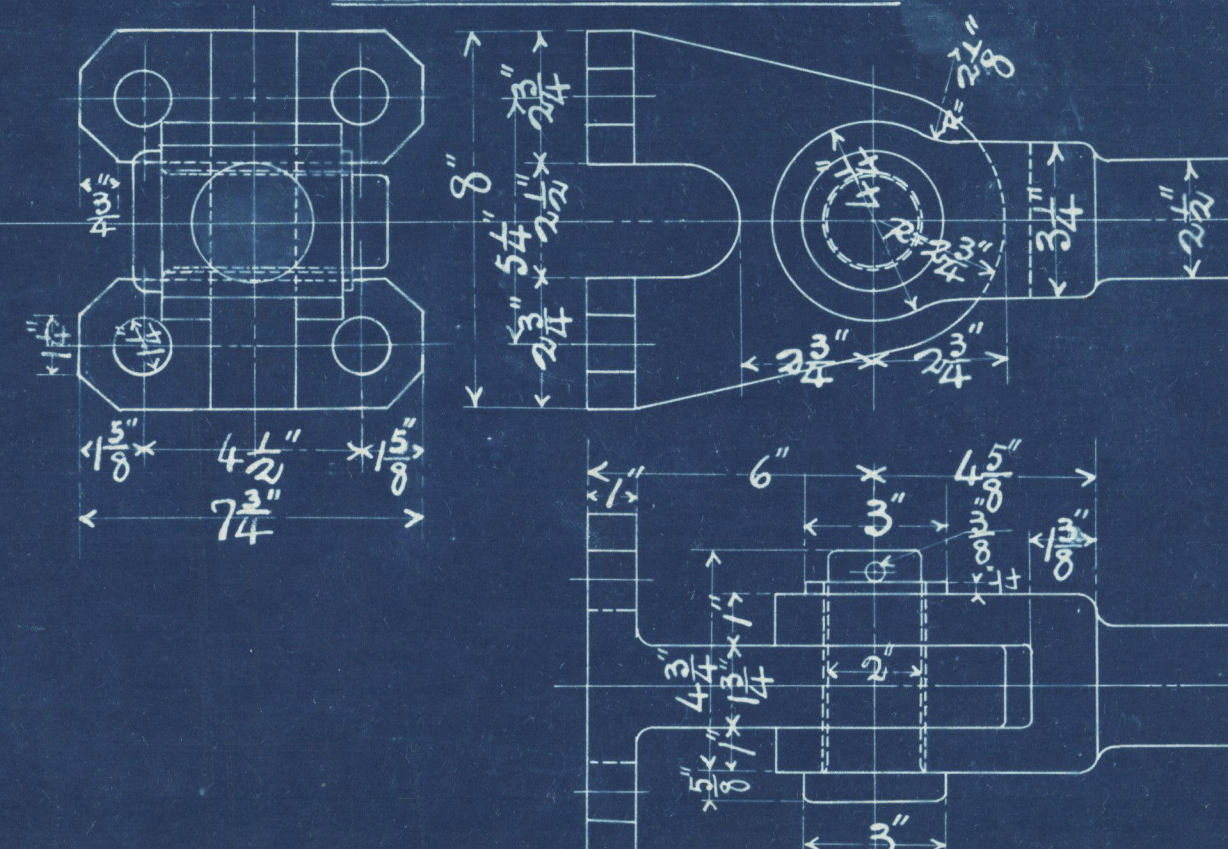
CAST STEEL GIRDER STAYS.  
 THE TENSILE STRENGTH IS NOT TO EXCEED 30 TONS  
 NOT LESS THAN 27 TONS PER SQUARE INCH.

SCALE 3 INCHES TO A FOOT.

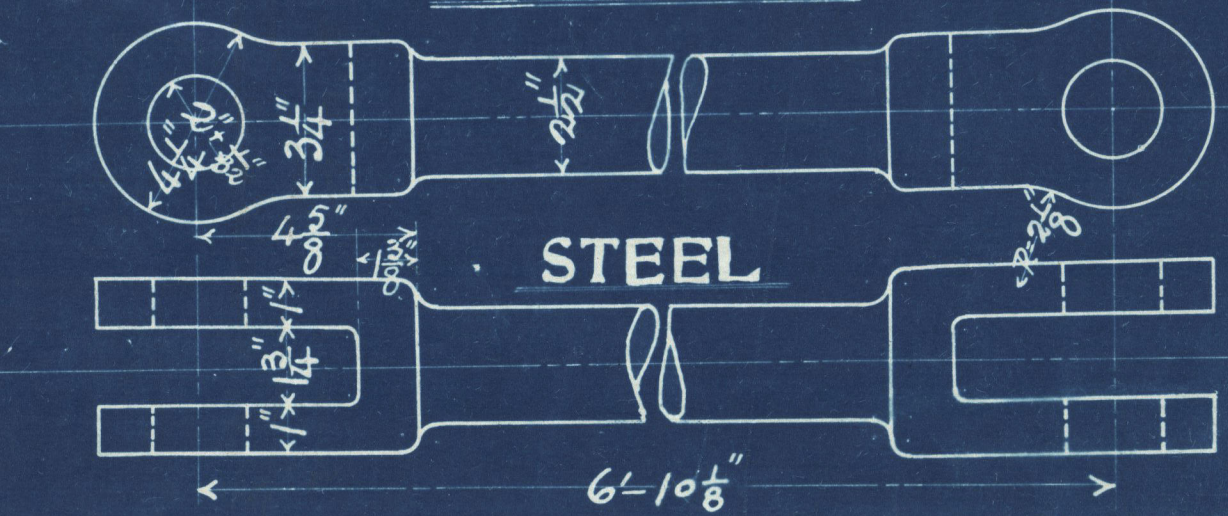
STEEL STAYS MARKED F.



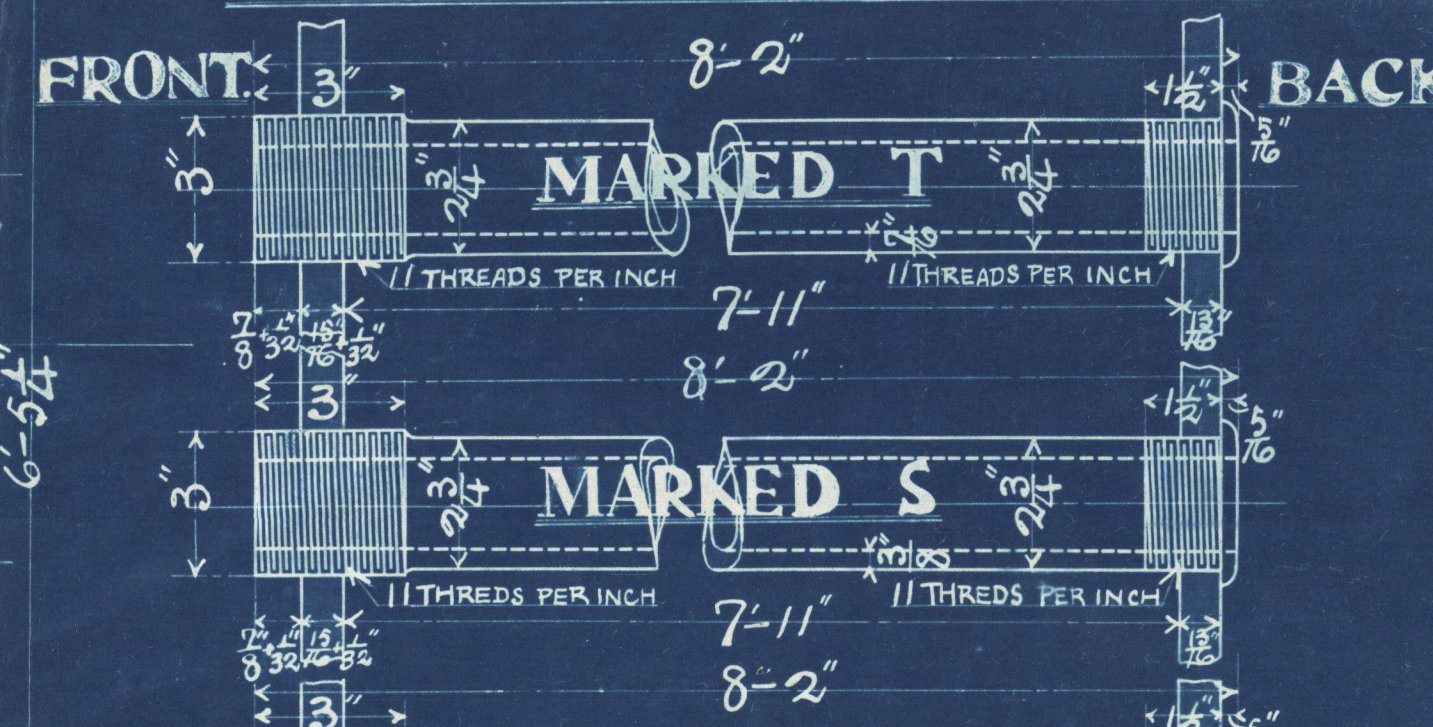
MARKED G. G.



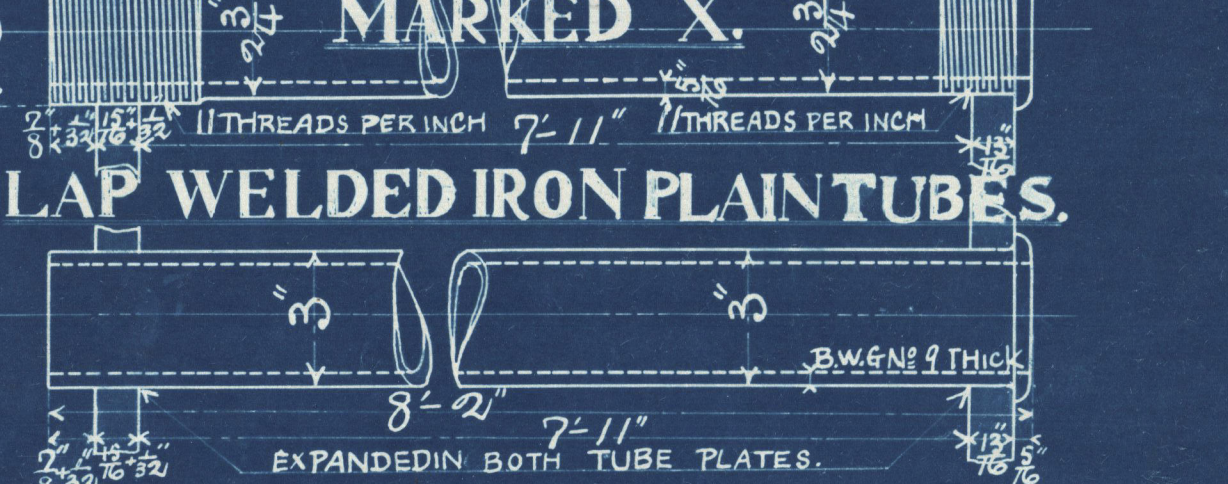
MARKED B.



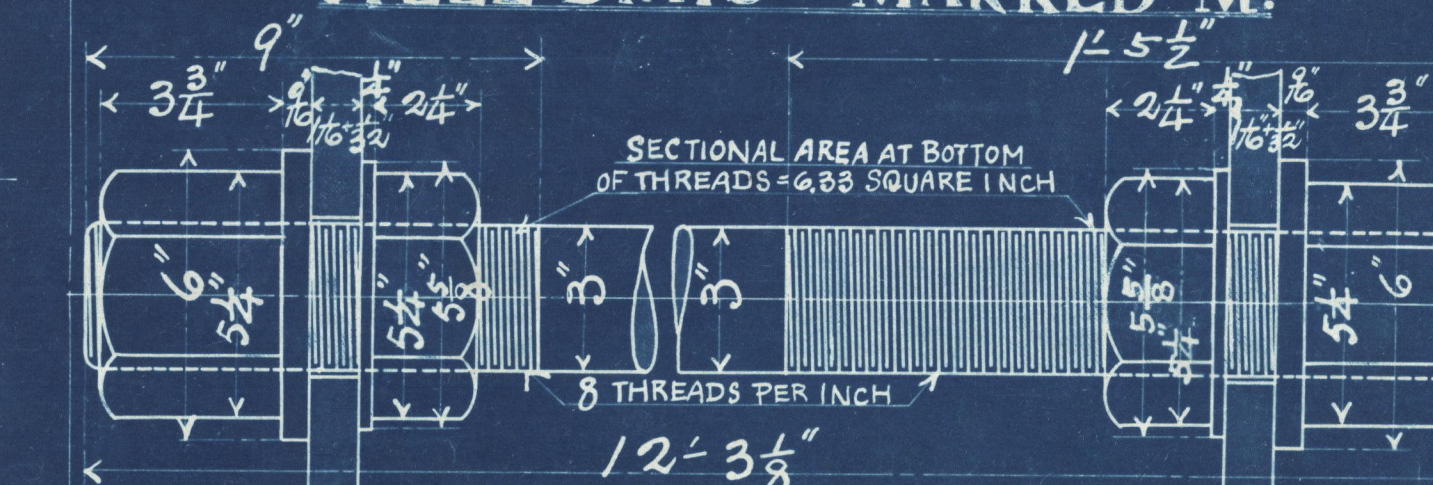
LAP WELDED IRON STAY TUBES.



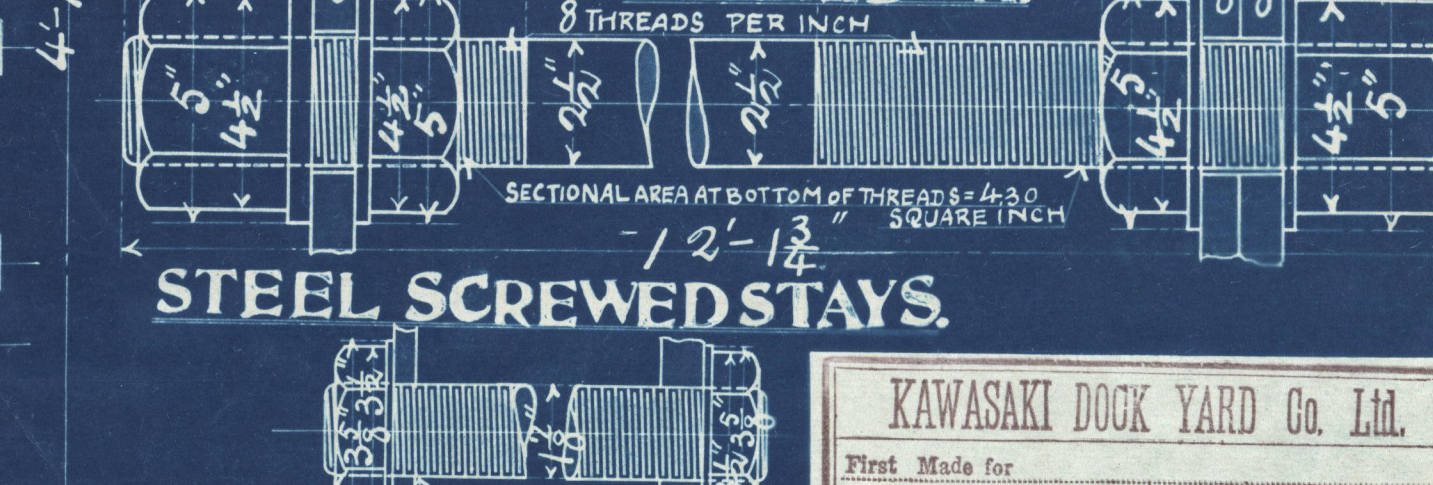
LAP WELDED IRON PLANT TUBES.



STEEL STAYS MARKED M.



MARKED A.



STEEL SCREWED STAYS.

KAWASAKI DOCK YARD CO. LTD.  
 First Made for:  
 Design by:  
 Drawn by:  
 Checked by:  
 Approved by:  
 Drawing No. 297, 298 AND 299  
 Date, No. 1094-2, 1st No. 1

W1254-0095



1.

297-8-9  
Main Boilers

J. S. S. Tacoma Maru  
-Kobe Rep. No. 825-

6671  
6672

RETAIN

W1254-0095



© 2020

Lloyd's Register  
Foundation