

Nº 803 SHIP

Dimensions

Half breadth = 53.12
 Depth = 51.83
 Half breadth = 53.34
 109.82
 Depth = 7.00
 1st Dimension = 102.82
 2nd Dimension = 383.166
 3rd Dimension = 39.394

Length - Depth = 13.23
 Length - Breadth = 7.55
 L
 D
 15.9

Section

through Oil Compartments

Moulded Dimensions 385' 0" x 50' 7" x 30' 2"

Scale 1/2" = 1 Foot

Class - 100 A. 1. Lloyd's 3 Deck Rule

No reduction from Moulding Dimensions to be made

Oil Tanks Nos 2, 3, 4, 5, 6, 7

Equipment

1. 100 A. 1. Lloyd's 3 Deck Rule

2. 100 A. 1. Lloyd's 3 Deck Rule

3. 100 A. 1. Lloyd's 3 Deck Rule

4. 100 A. 1. Lloyd's 3 Deck Rule

5. 100 A. 1. Lloyd's 3 Deck Rule

6. 100 A. 1. Lloyd's 3 Deck Rule

7. 100 A. 1. Lloyd's 3 Deck Rule

8. 100 A. 1. Lloyd's 3 Deck Rule

9. 100 A. 1. Lloyd's 3 Deck Rule

10. 100 A. 1. Lloyd's 3 Deck Rule

11. 100 A. 1. Lloyd's 3 Deck Rule

12. 100 A. 1. Lloyd's 3 Deck Rule

13. 100 A. 1. Lloyd's 3 Deck Rule

14. 100 A. 1. Lloyd's 3 Deck Rule

15. 100 A. 1. Lloyd's 3 Deck Rule

16. 100 A. 1. Lloyd's 3 Deck Rule

17. 100 A. 1. Lloyd's 3 Deck Rule

18. 100 A. 1. Lloyd's 3 Deck Rule

19. 100 A. 1. Lloyd's 3 Deck Rule

20. 100 A. 1. Lloyd's 3 Deck Rule

21. 100 A. 1. Lloyd's 3 Deck Rule

22. 100 A. 1. Lloyd's 3 Deck Rule

23. 100 A. 1. Lloyd's 3 Deck Rule

24. 100 A. 1. Lloyd's 3 Deck Rule

25. 100 A. 1. Lloyd's 3 Deck Rule

26. 100 A. 1. Lloyd's 3 Deck Rule

27. 100 A. 1. Lloyd's 3 Deck Rule

28. 100 A. 1. Lloyd's 3 Deck Rule

29. 100 A. 1. Lloyd's 3 Deck Rule

30. 100 A. 1. Lloyd's 3 Deck Rule

31. 100 A. 1. Lloyd's 3 Deck Rule

32. 100 A. 1. Lloyd's 3 Deck Rule

33. 100 A. 1. Lloyd's 3 Deck Rule

34. 100 A. 1. Lloyd's 3 Deck Rule

35. 100 A. 1. Lloyd's 3 Deck Rule

36. 100 A. 1. Lloyd's 3 Deck Rule

37. 100 A. 1. Lloyd's 3 Deck Rule

38. 100 A. 1. Lloyd's 3 Deck Rule

39. 100 A. 1. Lloyd's 3 Deck Rule

40. 100 A. 1. Lloyd's 3 Deck Rule

41. 100 A. 1. Lloyd's 3 Deck Rule

42. 100 A. 1. Lloyd's 3 Deck Rule

43. 100 A. 1. Lloyd's 3 Deck Rule

44. 100 A. 1. Lloyd's 3 Deck Rule

45. 100 A. 1. Lloyd's 3 Deck Rule

46. 100 A. 1. Lloyd's 3 Deck Rule

47. 100 A. 1. Lloyd's 3 Deck Rule

48. 100 A. 1. Lloyd's 3 Deck Rule

49. 100 A. 1. Lloyd's 3 Deck Rule

50. 100 A. 1. Lloyd's 3 Deck Rule

51. 100 A. 1. Lloyd's 3 Deck Rule

52. 100 A. 1. Lloyd's 3 Deck Rule

53. 100 A. 1. Lloyd's 3 Deck Rule

54. 100 A. 1. Lloyd's 3 Deck Rule

55. 100 A. 1. Lloyd's 3 Deck Rule

56. 100 A. 1. Lloyd's 3 Deck Rule

57. 100 A. 1. Lloyd's 3 Deck Rule

58. 100 A. 1. Lloyd's 3 Deck Rule

59. 100 A. 1. Lloyd's 3 Deck Rule

60. 100 A. 1. Lloyd's 3 Deck Rule

61. 100 A. 1. Lloyd's 3 Deck Rule

62. 100 A. 1. Lloyd's 3 Deck Rule

63. 100 A. 1. Lloyd's 3 Deck Rule

64. 100 A. 1. Lloyd's 3 Deck Rule

65. 100 A. 1. Lloyd's 3 Deck Rule

66. 100 A. 1. Lloyd's 3 Deck Rule

67. 100 A. 1. Lloyd's 3 Deck Rule

68. 100 A. 1. Lloyd's 3 Deck Rule

69. 100 A. 1. Lloyd's 3 Deck Rule

70. 100 A. 1. Lloyd's 3 Deck Rule

71. 100 A. 1. Lloyd's 3 Deck Rule

72. 100 A. 1. Lloyd's 3 Deck Rule

73. 100 A. 1. Lloyd's 3 Deck Rule

74. 100 A. 1. Lloyd's 3 Deck Rule

75. 100 A. 1. Lloyd's 3 Deck Rule

76. 100 A. 1. Lloyd's 3 Deck Rule

77. 100 A. 1. Lloyd's 3 Deck Rule

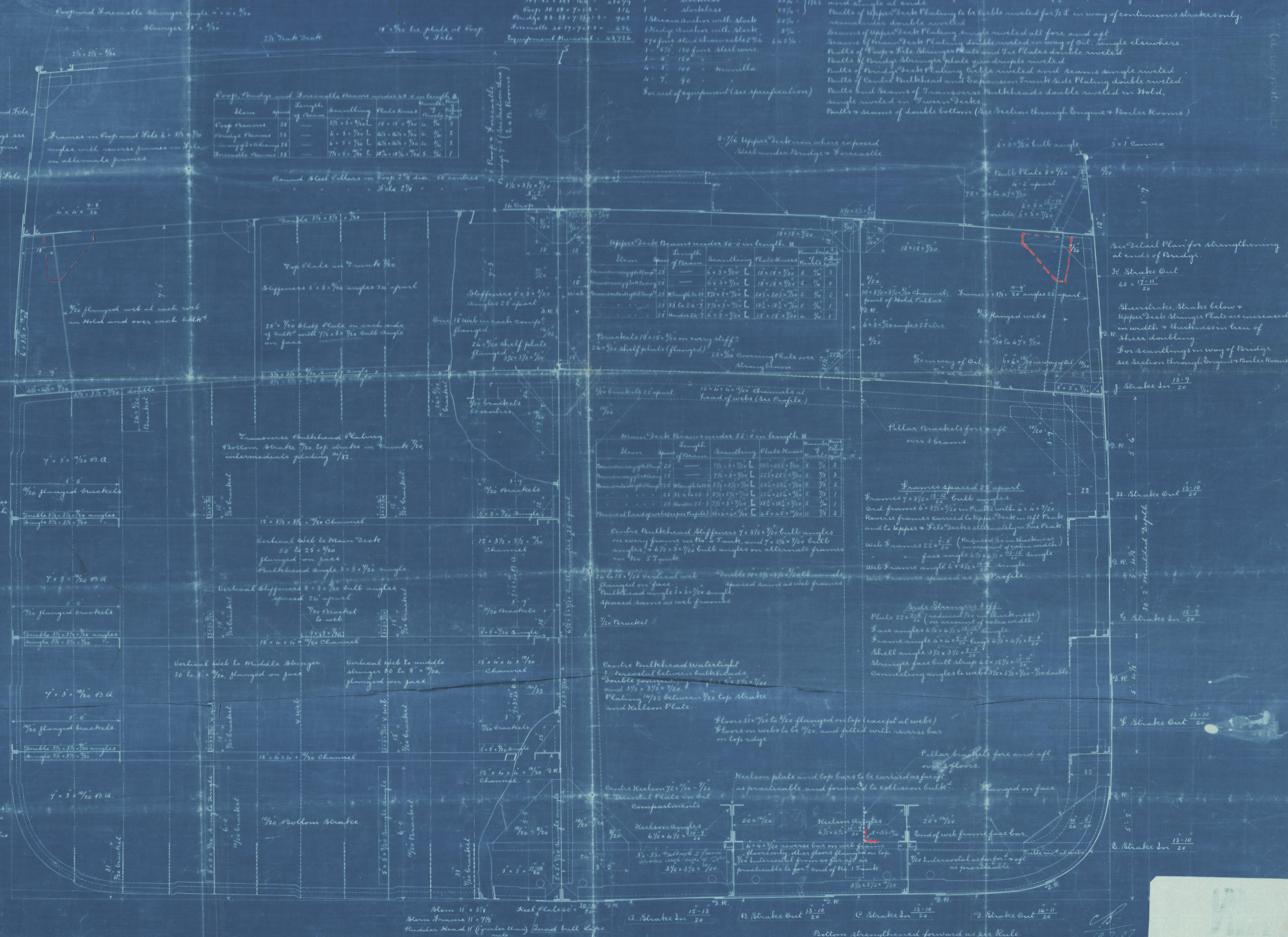
78. 100 A. 1. Lloyd's 3 Deck Rule

79. 100 A. 1. Lloyd's 3 Deck Rule

80. 100 A. 1. Lloyd's 3 Deck Rule

Riveting Notes

all butts and seams to be lap joints except butts of Upper Deck Sheerstrake outside of Bridge and Bridge Deck Sheerstrake, which are double straps, butts riveted for 1/2 length amidships
 Butts of Sheerstrake at ends quadruple riveted laps
 Remainder of shell butts below Sheerstrake quadruple riveted laps for 1/2 length amidships, butts riveted at ends
 Keel plate butts quadruple riveted laps
 Butts of Prop and Forecastle and double riveted laps throughout
 Butts of Bridge Sides (excluding Sheerstrake) quadruple riveted laps
 Butts of Bridge Sides riveted at ends of Bridge, single elsewhere
 Butts of Upper Deck Stringer quadruple riveted for 1/2 length amidships, butts riveted at ends
 Butts of Main Deck Stringer Plate butts riveted all fore and aft
 Butts of Main Deck Plating double riveted in way of oil for 1/2 length amidships, and single at ends
 Butts of Upper Deck Plating to be double riveted for 1/2 length amidships, remainder double riveted
 Beams of Upper Deck Plating single riveted all fore and aft, single elsewhere
 Beams of Prop & Forecastle Plating double riveted in way of oil, single elsewhere
 Butts of Prop & Forecastle Plating double riveted in way of oil, single elsewhere
 Butts of Bridge Stringer Plate quadruple riveted
 Butts of Bridge Deck Plating double riveted and seams single riveted
 Butts of Central Bulkhead and Expansion Transverse Bulkhead Plating double riveted
 Butts and seams of Transverse Bulkheads double riveted in Hold, single riveted in Tween Decks
 Butts & seams of double bottom (See Section through Engine & Boiler Rooms)



19.7.07

Midship Section
S.S. No. 803

Romanian
Armstrong Whitworth

Duplicate of
S.S. Carpathian
Kwv Rep^r 55167

"
S.S. "Romanian"

Newcastle Report

AP^o 55378

W1254-0080

REMAIN