

MARCONIGRAM  
CABLEGRAM

sent to the Surveyor at OSLO.

"S"

Department.

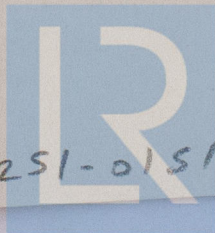
Dated 14th July, 1931.

## TRANSLATION.

"TELLO" = vessel's name

ERFOW = Referring to your cable of  
FYPBA = 11th instant

EXKIC = class has been expunged with a Red Line, indicating  
non-compliance with the Rules, Inform Owners  
accordingly.



W1251-0151

© 2020

Lloyd's Register  
Foundation