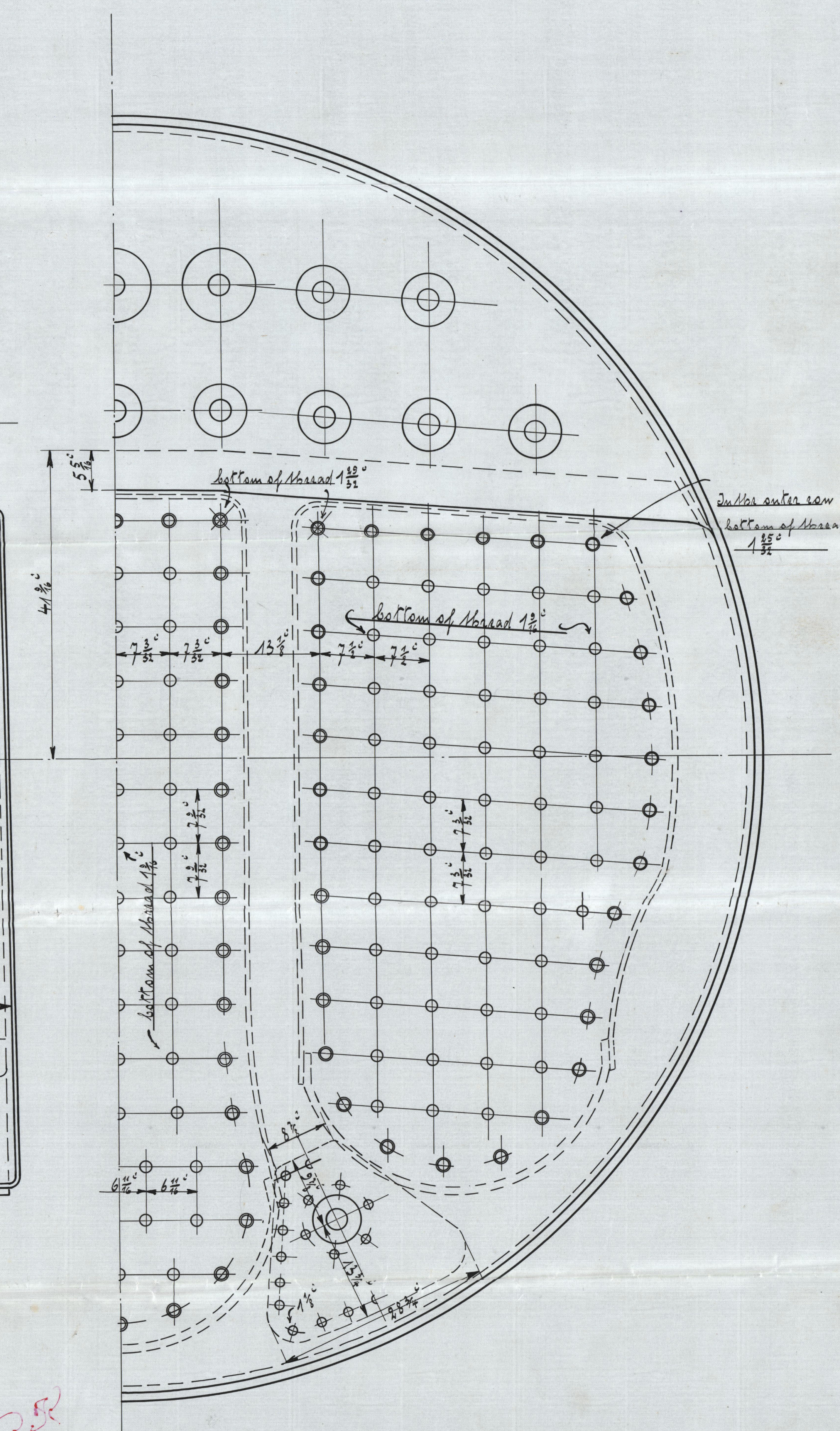
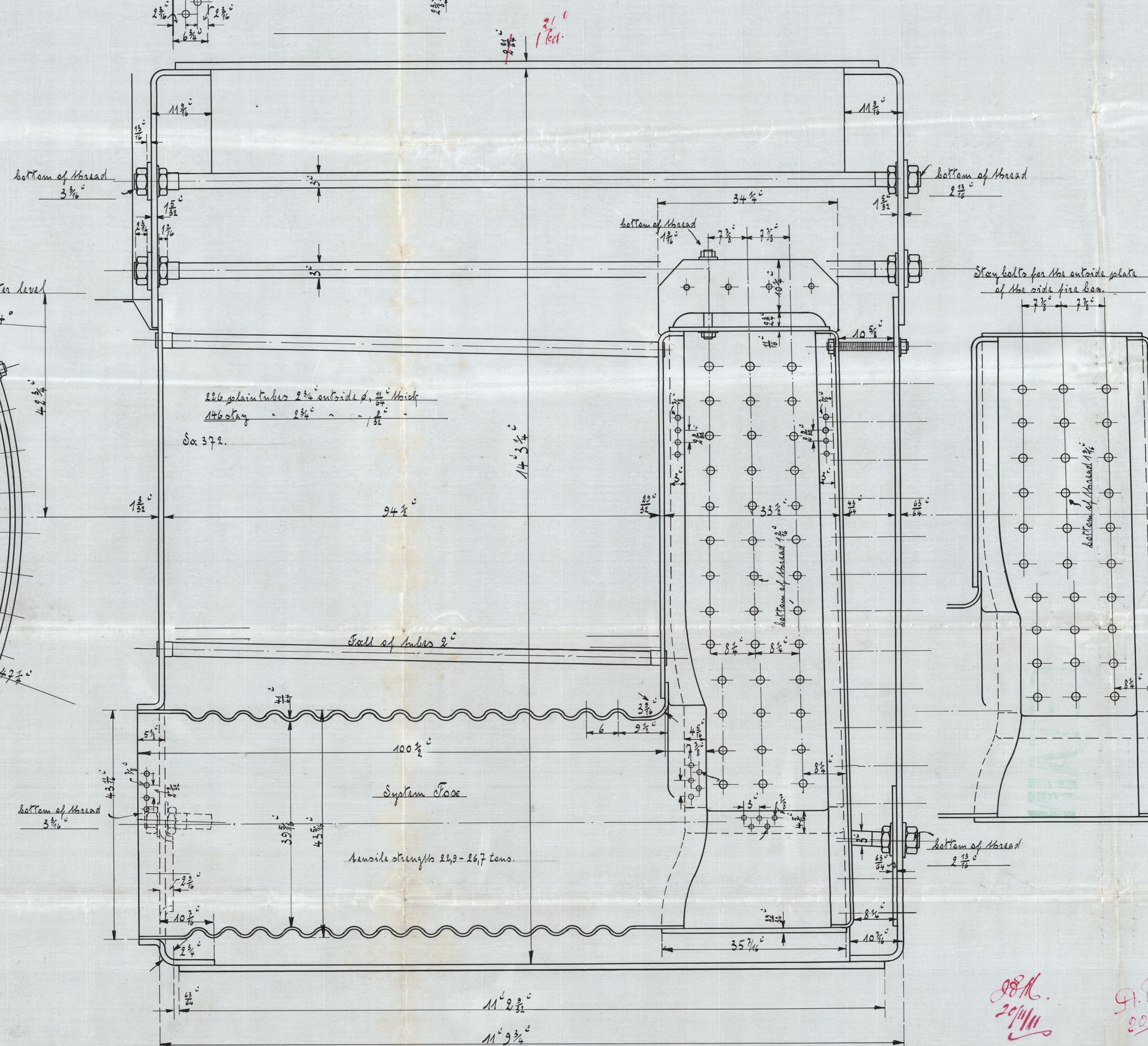
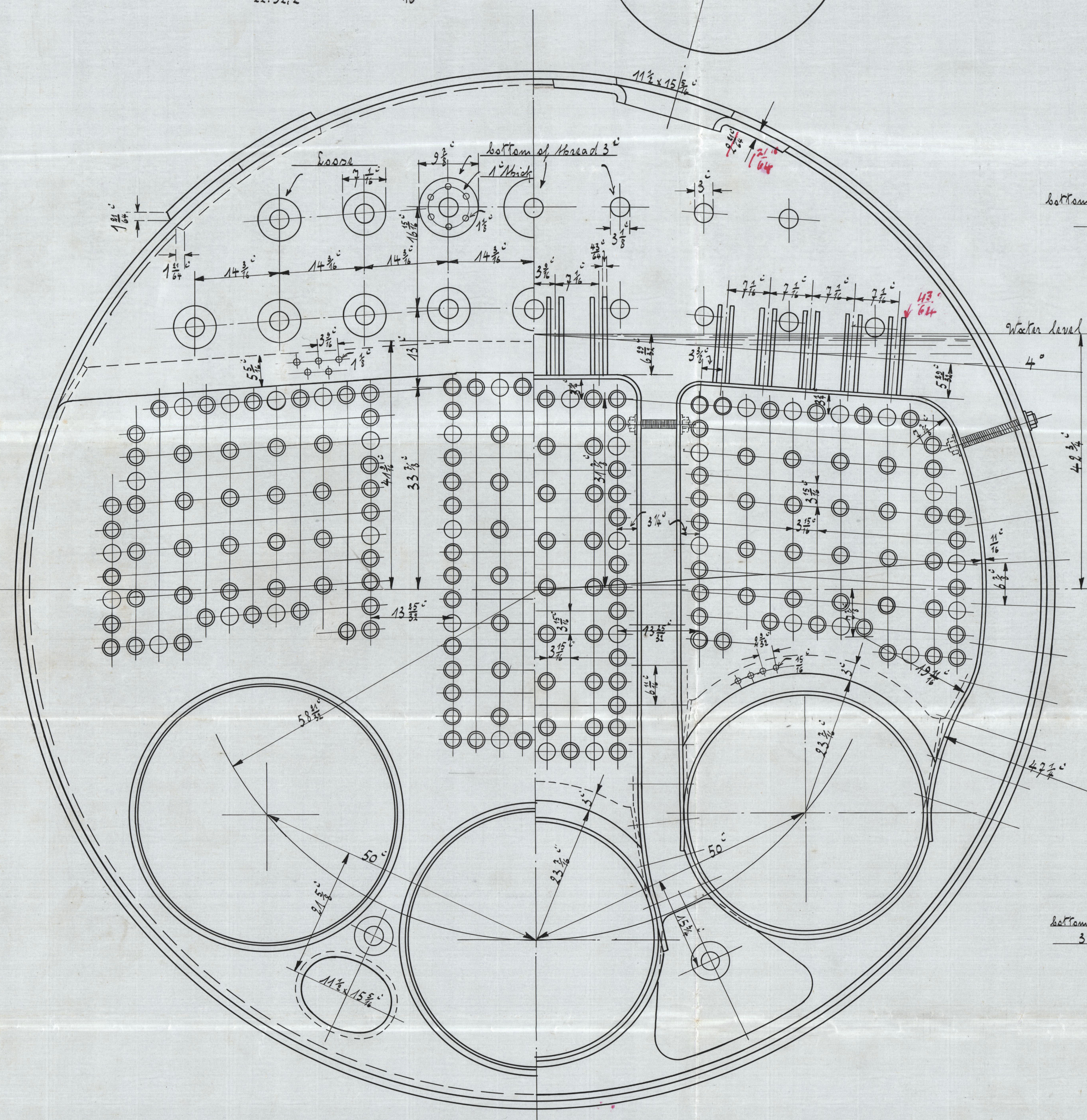
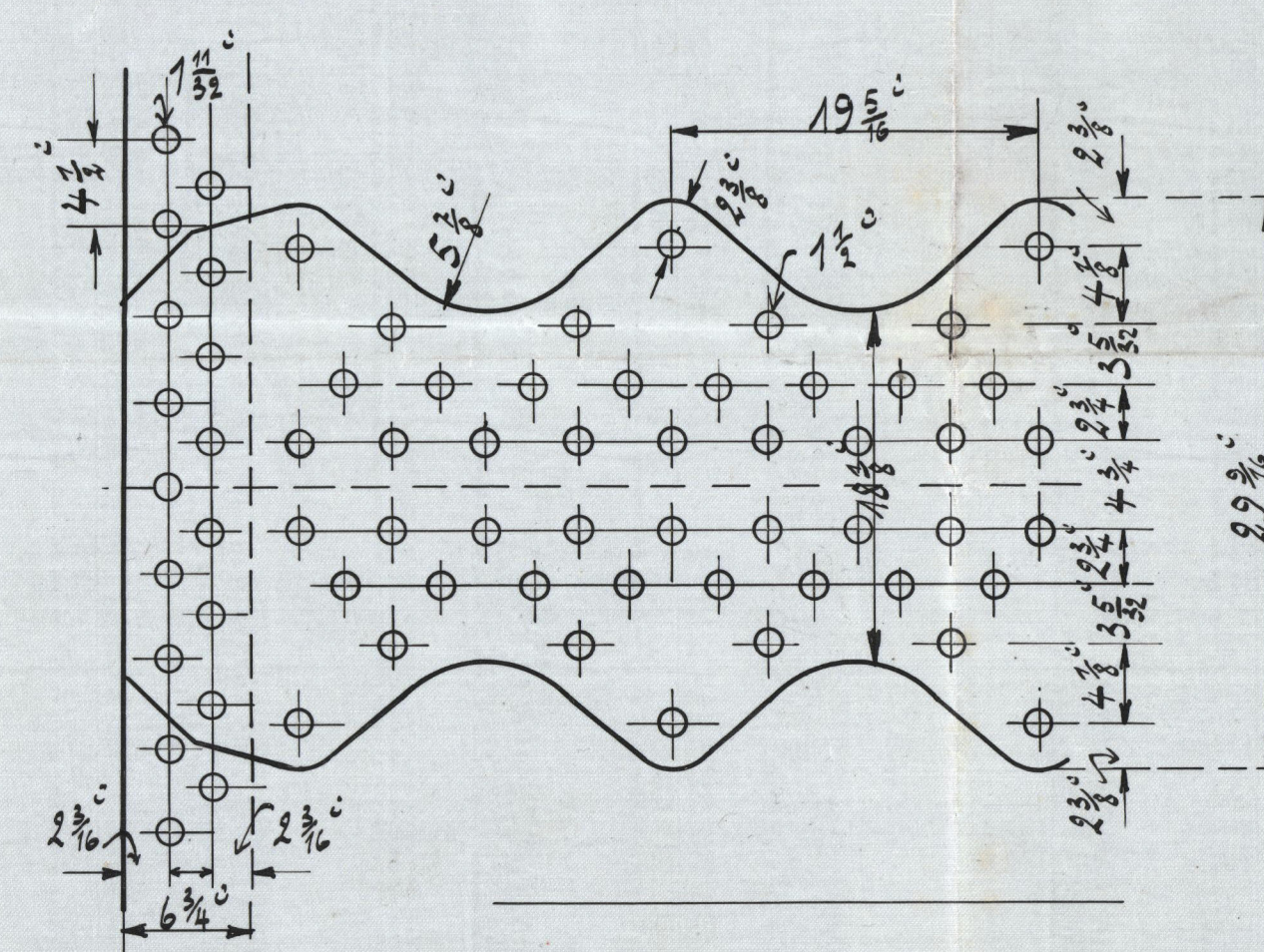


Material: Siemens Moberg - Steel  
 Shell plating and girders tensile strength 27.9 - 32+ tons  
 Elongation 21.5%  
 All the other material 27.9 - 28.0 tons per sq. inch tensile strength  
 Elongation 26%  
 All stay bolts with nuts and washers; material: Siemens Moberg - Steel.  
 Tensile strength 25+ - 28.6 tons per sq. inch.

to be classed 100 A<sub>1</sub> steel

1:10.

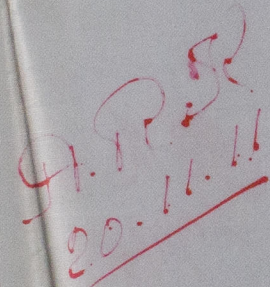
20/11/11



28 M  
20/11/11

9.12.50  
20.11.1





43 672

157 12. 71.

W/246-0046

© 2020

Lloyd's Register  
Foundation