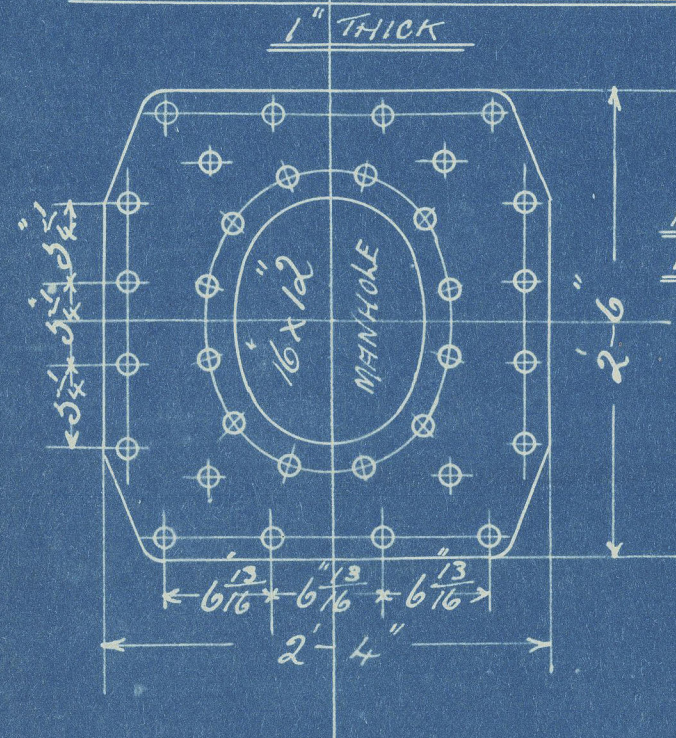


STEEL BOILER N^o 508

NOTE!

ALL PLATES & STAYS & RIVETS TO BE OF SIEMENS MARTIN STEEL
ALL RIVET HOLES THROUGHOUT THE BOILER TO BE DRILLED IN PLACE
AFTER THE PLATES ARE BENT THE SCREW STAYS ARE STEPPED STAYS
(1 1/8" + 1/4") + (1 1/2" + 1/8") EFFECTIVE DIAM. SCREWED INTO BOTH PLATES
& NUTTED AT EACH END - SCREWED 10 THREADS PER INCH
THE TUBES ARE OF IRON THE ORDINARY TUBES ARE 3 1/2" EXT. DIAM.
BY 8 L.S.G. THICK. THE STAY TUBES ARE 2 1/8" INT. DIAM. x 1/4" THICK
EFFECTIVE SCREWED AT ENDS TO 3 3/4" + 3 1/2" DIAM. A MANHOLE IN SHELL
16" x 12" WITH SHORTER AXIS LONGITUDINALLY AND A DOUBLING PLATE
2' 6" x 2' 4" x 1" THICK FITTED ROUND IT

DOUBLING PLATE ROUND MANHOLE



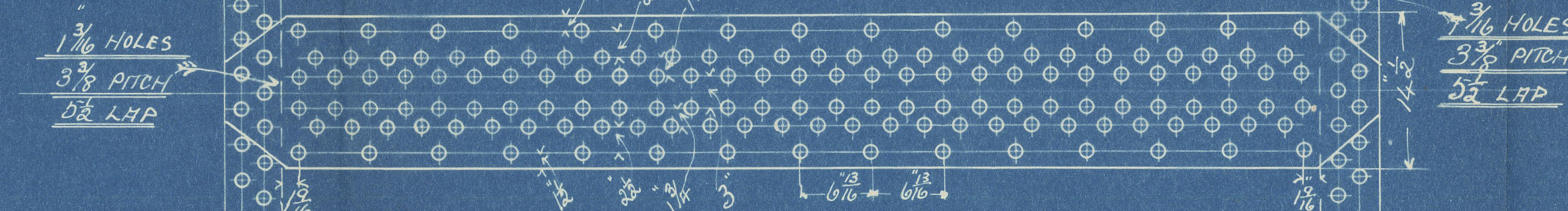
ALL 1" RIVET HOLES
INNER ROW COUNTERSUNK

WORKING PRESSURE = 180 LLOYDS

SCALE 1" INCH = 1 FOOT

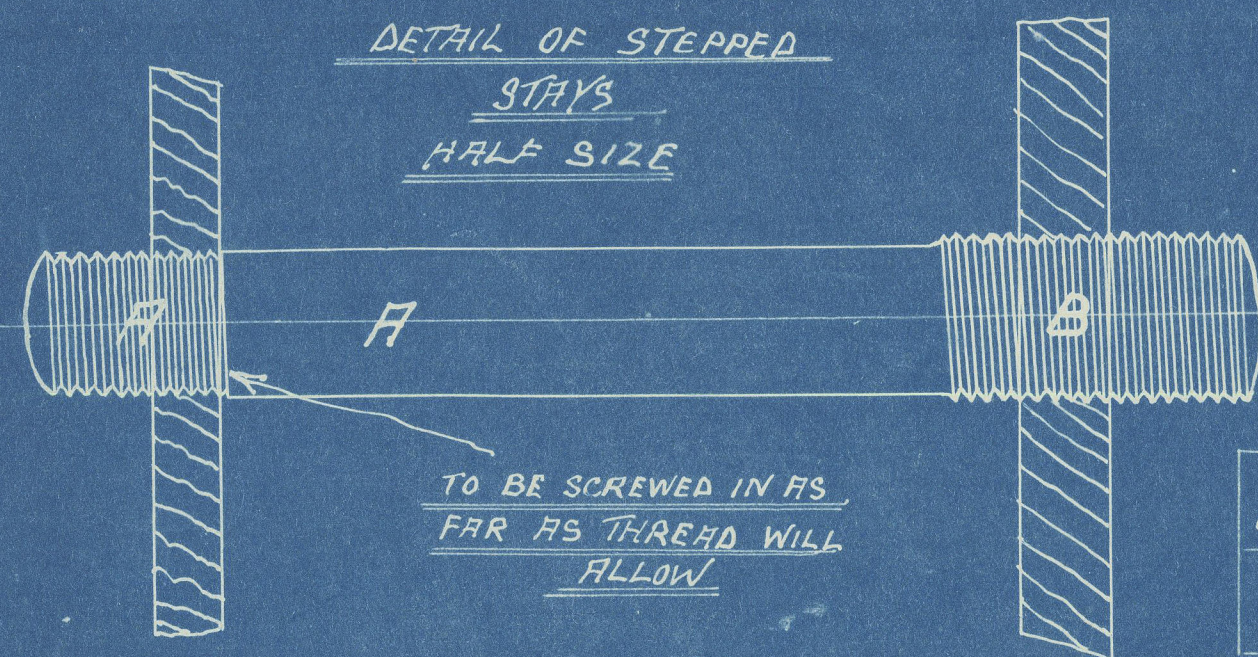
PLAN OF SHELL RIVETING

1" HOLES 6 13/16" PITCH
PERCENTAGE OF PLATE = 85.3%
" " RIVETS = 100.8 LLOYDS = 85.6%

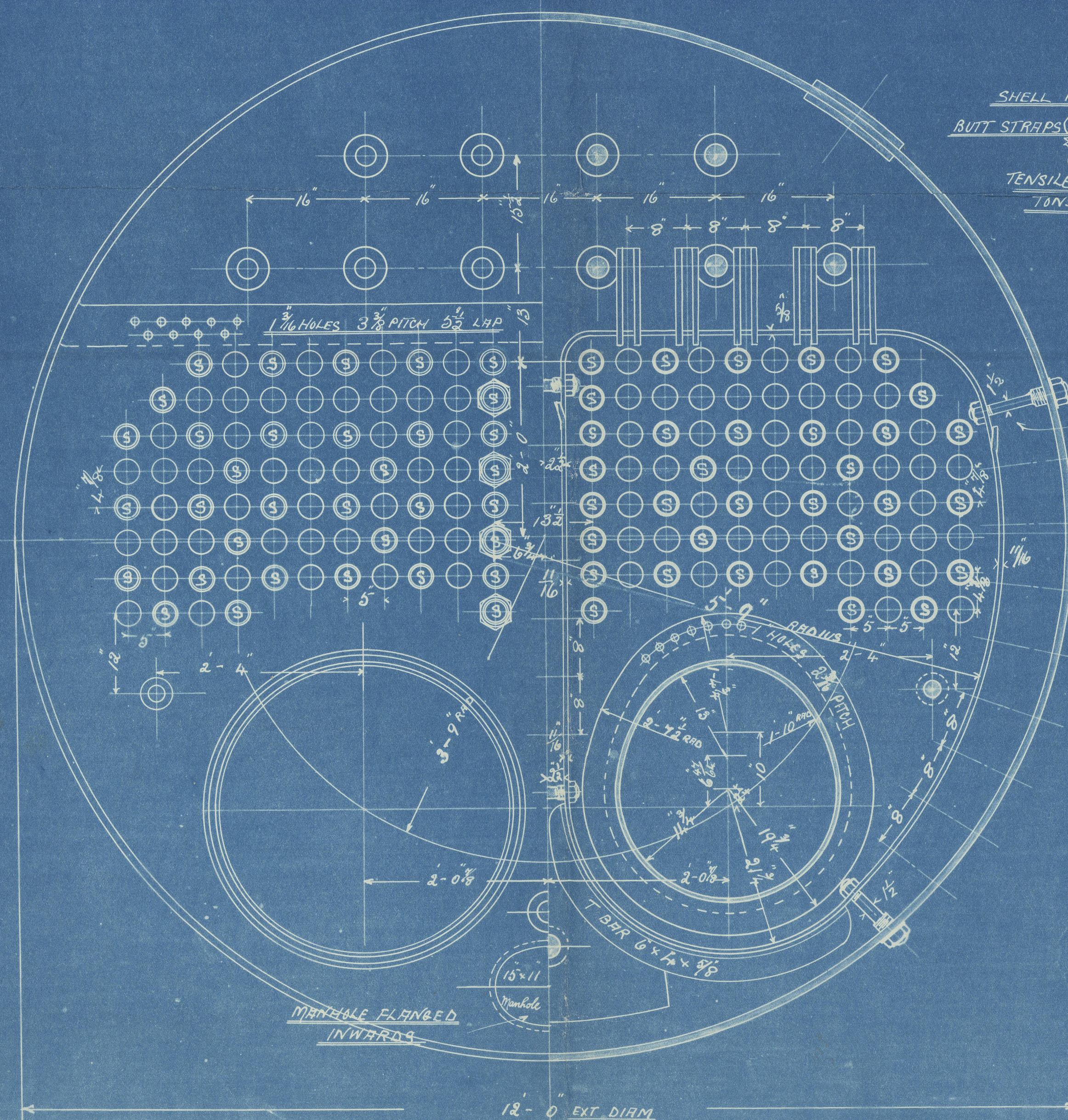


DIMENSIONS

LENGTH OF FIRE BARS	
AREA OF FIRE GRATE	
DIAM OF TUBES OUTSIDE	3 1/2"
LENGTH OF TUBES OVER PLATES	6' 4 1/2"
N ^o OF TUBES	158
AREA THROUGH TUBES	8
SURFACE OF TUBES	902
TOTAL HEATING SURFACE	1140
WORKING PRESSURE	180 LBS

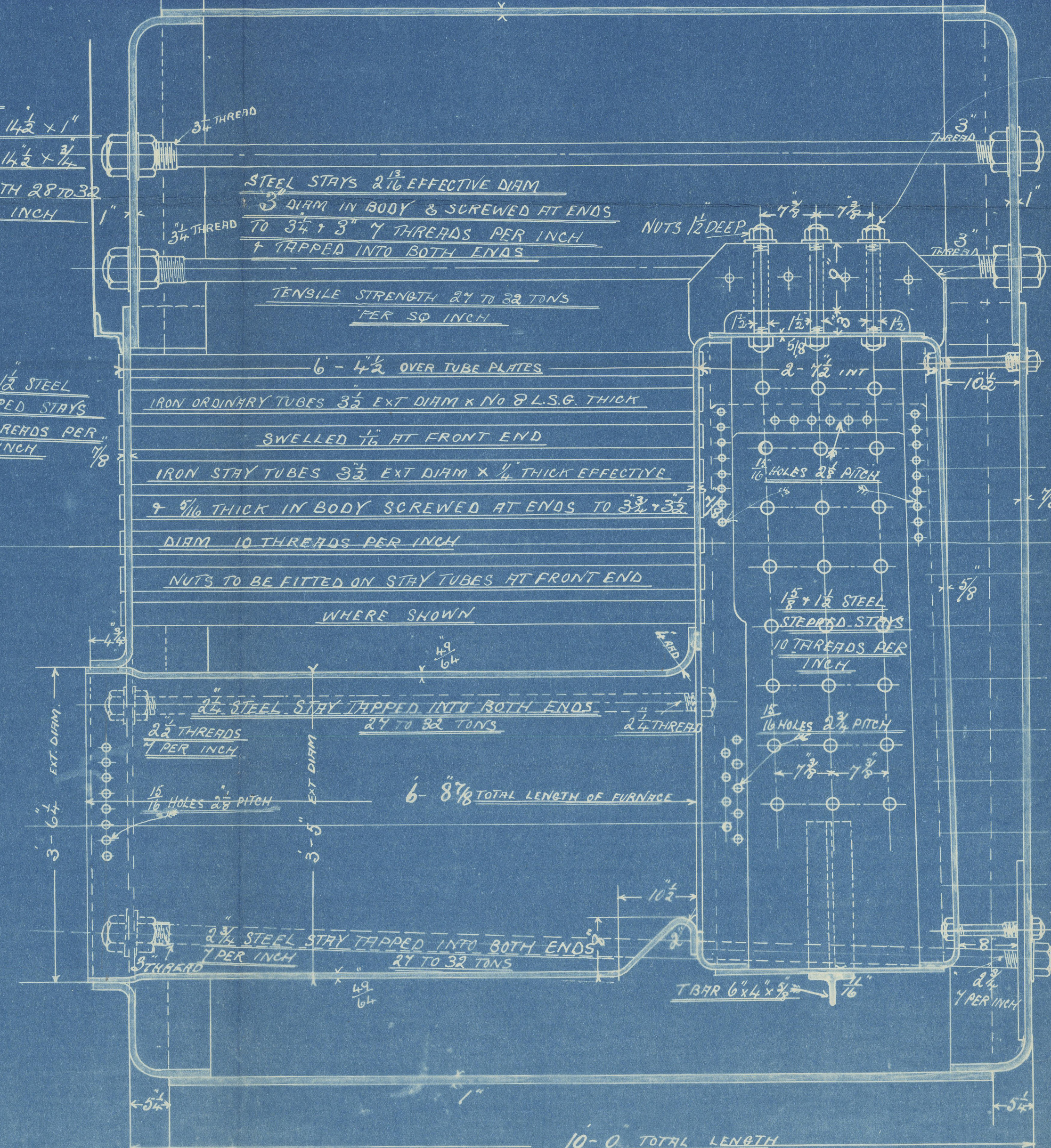


	DIAM AT A	DIAM AT B	
142 STEPPED STAYS	1 1/2"	1 5/8"	ALL SCREWED 10 THREADS PER INCH
58 " "	1 3/4"	1 7/8"	LENGTHS TO BE TAKEN FROM BOILER



SHELL 1" THICK
BUTT STRAPS (INSIDE 14 1/2" x 1"
OUTSIDE 14 1/2" x 3/4")
TENSILE STRENGTH 28 TO 32
TONS PER SQ INCH

1 1/8" x 1/2" STEEL
STEPPED STAYS
10 THREADS PER
INCH



ORDINARY STEEL
SCREW STAYS IN
GIRDERS, SCREWED
BOTH ENDS TO 1/2" DIAM
10 INCHES
PER INCH.

DOUBLE STEEL BARS
9" x 7/8" THICK
RIVETED TOGETHER

1 1/8" x 1/2"
STEPPED STAYS
SHOWN THUS

1 1/8" x 1/2"
STEPPED STAYS
SHOWN THUS
ALL SCREWED
10 THREADS PER
INCH

INSIDE DOUBLING
PLATE 3/4" THICK
RIVETED ON WITH
1" RIVETS
1/16" RIVET HOLES

LLOYD'S REGISTER
OF SHIPPING
1 MAY 1905
+ HULL +

EARLE'S ENGINEERING
N^o 508
DATE 25.4.05
HULL

N^o 508

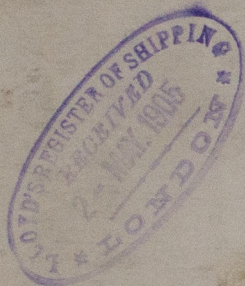
556313
20.4.05

Lloyd's Register
Foundation

Earle's S & C. Co. Ltd

— 508 Blr —

180 lbs



s/s 'Deveron'

Hull Report No. 17382

W1262-0265



© 2020

Lloyd's Register
Foundation