

15/9/22

J. S. QUILPUE

PLAN SHEWING STRUCTURAL ALTERATIONS.

SCALE 1/8" = 1 FOOT

S.O. 261

BULWARKS - 9/16" TO LOWER DECK. 9/16" HOLE. NIM DOUBLE FRAMES 4" x 4" x 1/2" THICKNESS OF ADJACENT FRAMES + DOUBLE FRAMES 1/2" DEEP AND INNER BUTTRESS AS THE SIZE OF PORT FRAMES. STRENGTHENED BY VERTICAL ANGLES SPACED 80" BETWEEN LINES OF DECK AND 64" BETWEEN LOWER AND MAIN DECK AND BY HORIZONTAL STRENGTHENERS 40" APART. ALL OF THE SIZE OF MAIN FRAMES IN SAME BARGE. BULWARKS MUST BE TRUE TO THE FOUR BULK HEAD STRENGTHENERS. BULK HEAD LINE DECK RIGID TO FACE OF VERTICAL ANGLE STIFFENERS.

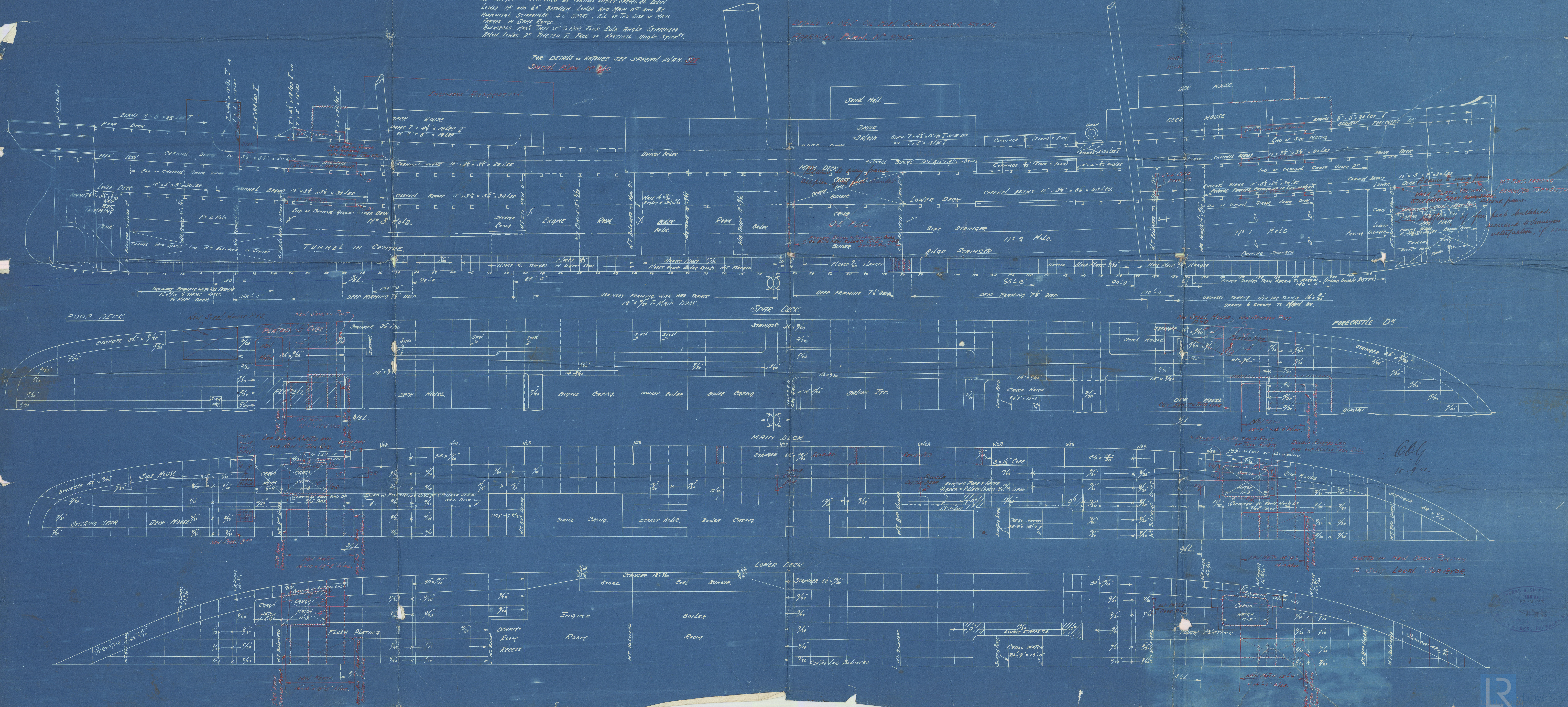
FOR DETAILS IN WATERSHIPS SEE SPECIAL PLAN SET
SPECIAL PLAN NO. 2610.

EXISTING STRUCTURE MARKED IN BLACK.

NEW IN RED.

OLD STRUCTURE REMOVED - THUS +-----+

DETAILS IN RED IN FULL CROSS BULWARK TO FACE
APPROVED PLAN, N° 2610.



"S.S. Gascoyne
ex
Guilme"
Structural
Alterations



© 2020

Lloyd's Register
Foundation

S. S. Gascoyne

Structural Alterations

141-6132

NEW

W1242-0104

Howard Center
Foundation