

# YARD No 490.

S.S. SUCTION DREDGER.

PROFILE, DECK, W.T. BULKHEADS,  
& ARRANGEMENT OF KEELSONS.

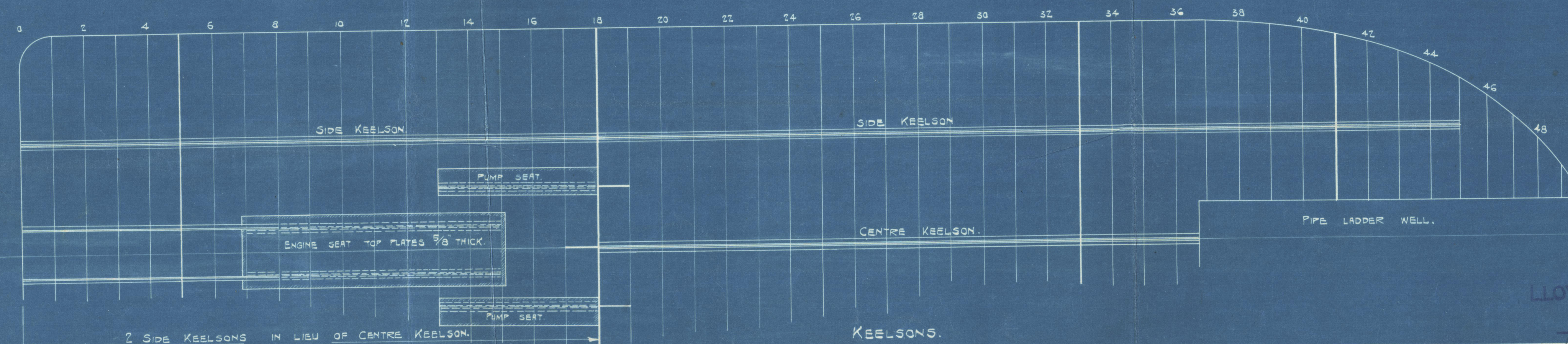
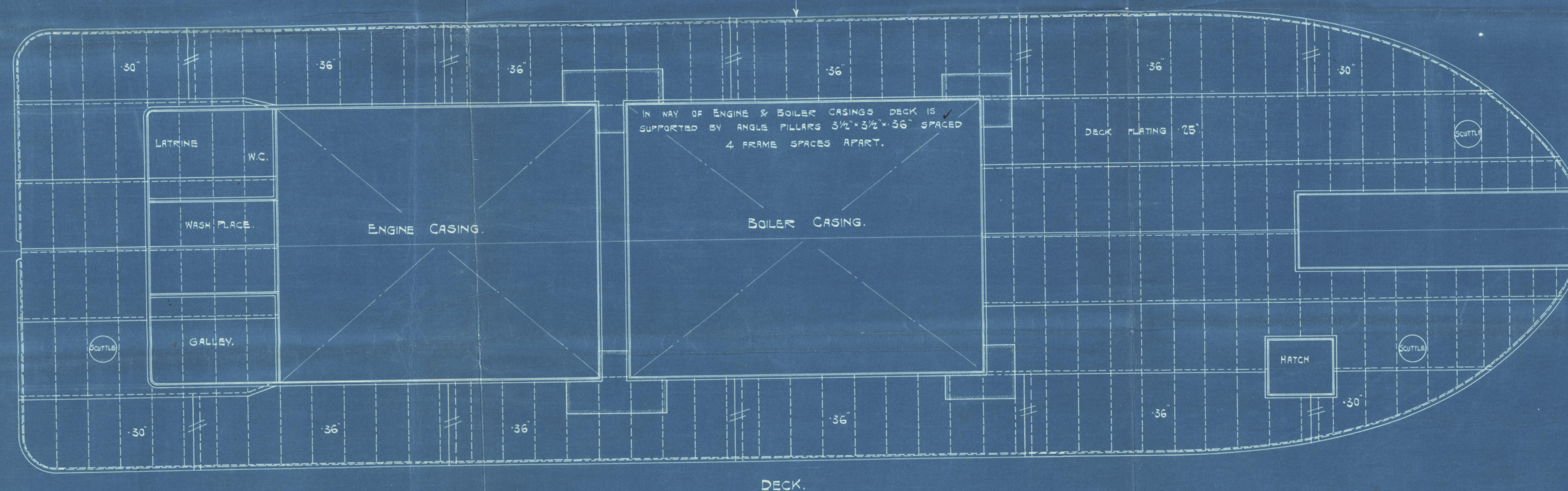
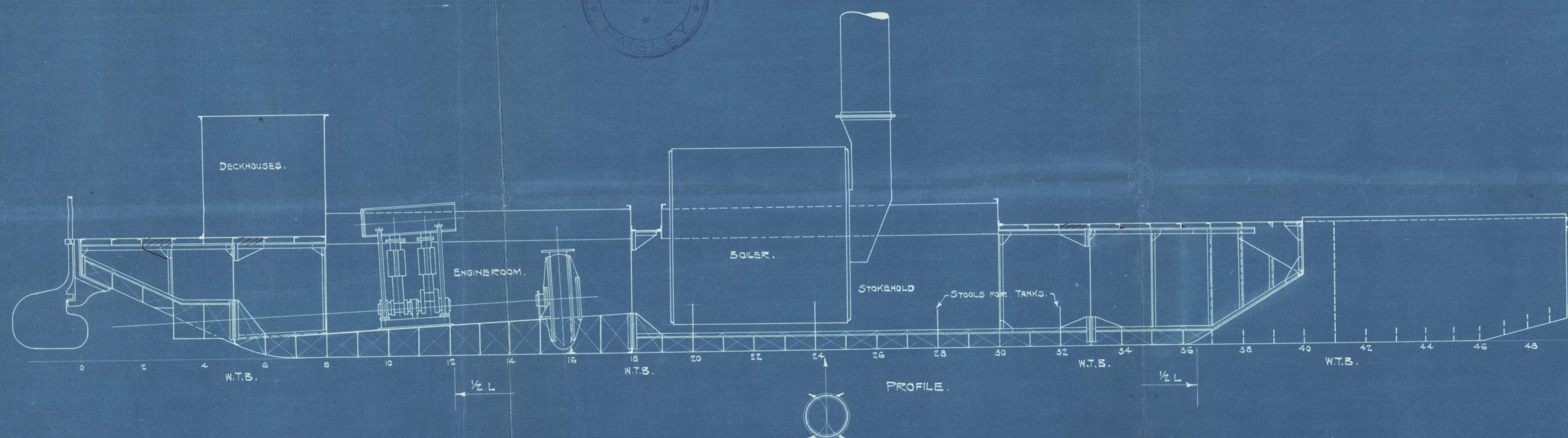
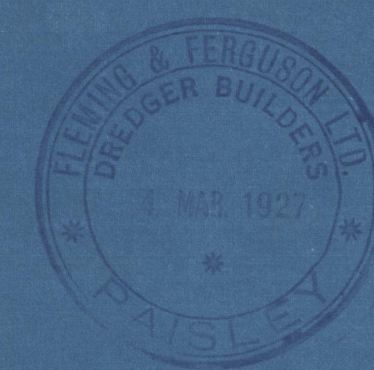
DIMENSIONS:- 85'-0" x 24'-0" x 6'-6" MLD.  
SCALE:- 1/4" = 1'-0".

## RIVETING OF SHELL & DECK PLATING.

END LAPS OF SHELL PLATING ALL DOUBLE RIVETED.  
SEAMS OF SHELL PLATING ALL SINGLE RIVETED.  
BUTTS OF STRINGER PLATE DOUBLE RIVETED THROUGHOUT.  
BUTTS OF DECK PLATING DOUBLE RIVETED FOR 1/2 L  
TO SINGLE RIVETED AT ENDS.  
SEAMS OF DECK PLATING ALL SINGLE RIVETED.

NOTE:- THE VESSEL IS TO BE ERECTED IN BUILDER'S YARD,  
DISMANTLED & SHIPPED ABROAD.

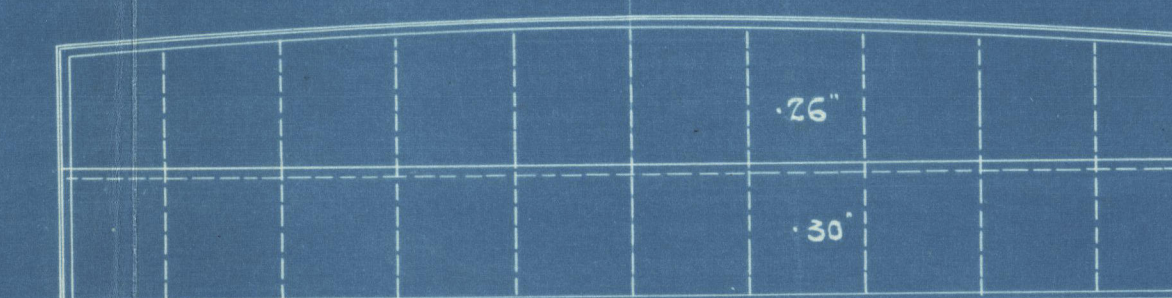
CLASSIFICATION:- THE VESSEL IS TO BE CONSTRUCTED UNDER THE SPECIAL SURVEY  
OF LLOYDS REGISTER AND A CERTIFICATE OBTAINED SHOWING THAT  
SO FAR AS IS PRACTICABLE THE WORK HAS BEEN CARRIED OUT IN  
ACCORDANCE WITH THEIR REQUIREMENTS FOR CLASS A.1. DREDGER. *for Mrs. Sturges Review*



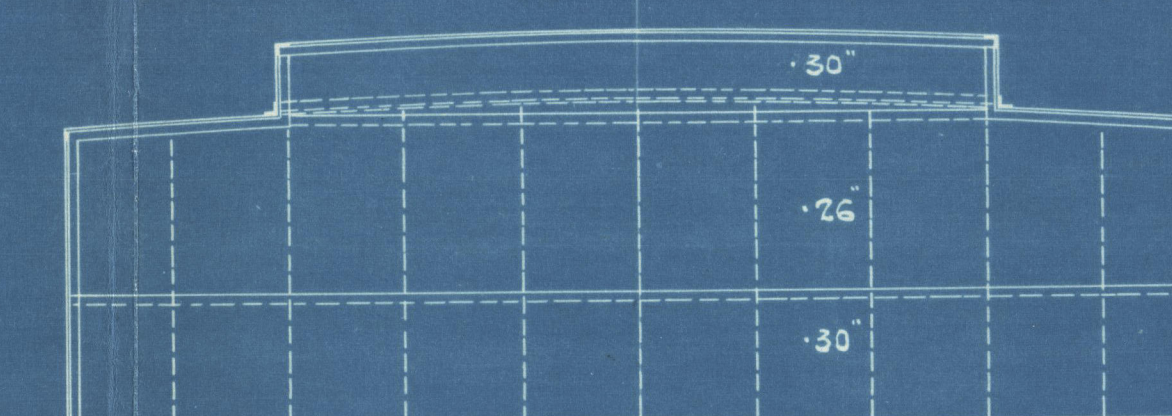
## RIVETING OF W.T. BULKHEADS.

ALL RIVETS 5/8" DIAM.  
LANDINGS & BUTTLAPS SINGLE RIVETED, RIVETS SPACED 2 3/4" CRS.  
STIFFENERS, RIVETS SPACED 4 1/2" CRS, EXCEPT 5 RIVETS AT EACH END WHICH ARE SPACED 2 1/2" CRS.  
BOUNDARY ANGLE TO BULKHEAD & DECK, RIVETS SPACED 2 3/4" CRS.  
BOUNDARY ANGLE TO SHELL, RIVETS SPACED 3 1/8" CRS.

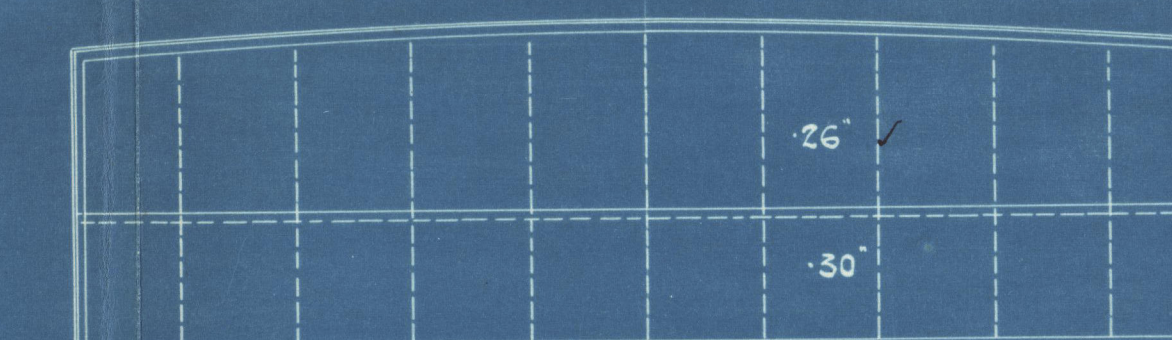
ALL BULKHEAD STIFFENERS 3 1/2" x 3" x 30" SPACED 30" APART  
EXCEPT ON COLLISION END 41, WHERE THEY ARE 24" APART.  
NO STIFFENER BRACKETS FITTED.  
BULKHEAD BOUNDARY ANGLES 3" x 3" x 36".



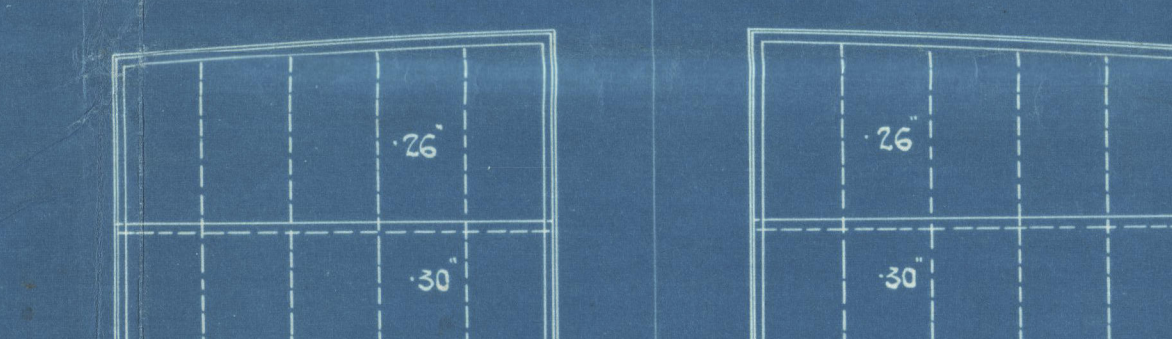
W.T. BULKHEAD No 5.  
LOOKING AFT.



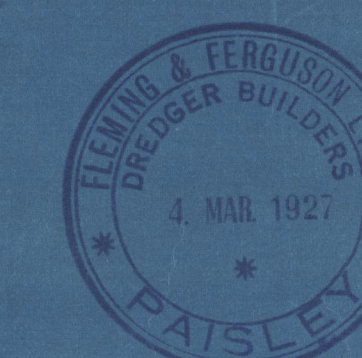
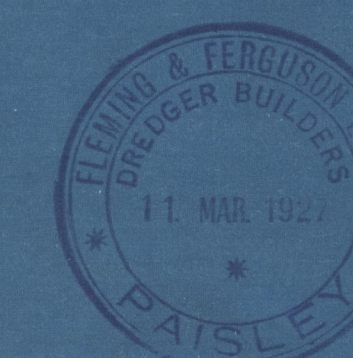
W.T. BULKHEAD No 18.  
LOOKING FORWARD.



W.T. BULKHEAD No 33.  
LOOKING FORWARD.



W.T. BULKHEADS Nos 41.  
LOOKING FORWARD.



APPROVED  
LLOYDS REGISTER OF SHIPPING

*M. J. Gormley* 10.3.27

S.S. No. 490.

PLAN No. 4

DRAWN BY W. J. G.

TRACED BY

EXAMINED

W1240-0069



— Hemming & Ferguson —  
Profile, deck W. J. Buckhead &  
Ant. of Kirkson's.  
— No 490 —

GLASGOW REPORT No 46813

W1240 - 0069



© 2020

Lloyd's Register  
Foundation